

# A survey on the distribution of ovothiol and *ovoA* gene expres-sion in different tissues and cells: a comparative analysis in sea urchin and mussels

Carola Murano<sup>1,2</sup>, Annalisa Zuccarotto<sup>1</sup>, Serena Leone<sup>1</sup>, Marco Sollitto<sup>3</sup>, Marco Gerdol<sup>3</sup>, Immacolata Castellano<sup>1,4</sup>, and Anna Palumbo<sup>1,\*</sup>

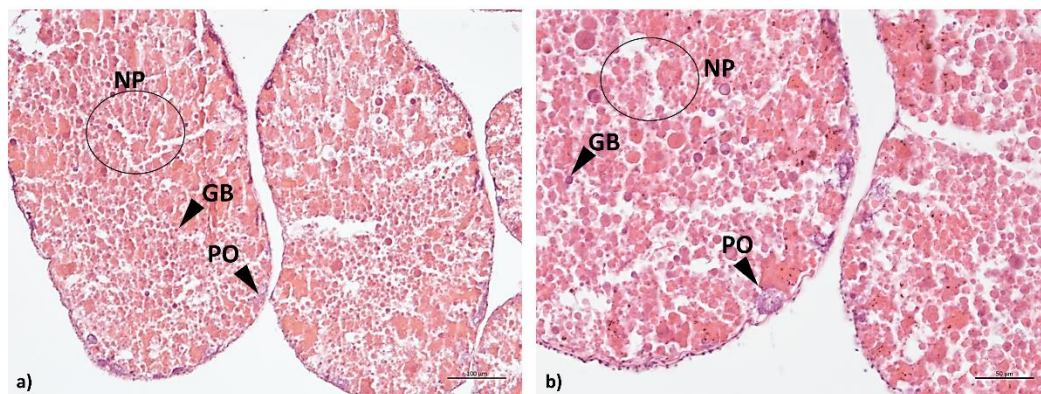
<sup>1</sup> Department of Biology and Evolution of Marine Organisms, Stazione Zoologica Anton Dohrn, Naples, Italy;

<sup>2</sup> Department of Integrative Marine Ecology, Stazione Zoologica Anton Dohrn; Naples, Italy;

<sup>3</sup> Department of Life Sciences, University of Trieste, Trieste, Italy;

<sup>4</sup> Department of Molecular Medicine and Medical Biotechnology, University of Naples Federico II, Italy

\* Correspondence: A.P. [anna.palumbo@szn.it](mailto:anna.palumbo@szn.it)



**Figure S1.** Histology of *P. lividus* ovaries. (a-b) Cross-section through the acinus of the ovary in the recovery stage (Stage I, according to Byrne (1990)). PO, previtellogenic oocytes; NP, nutritive phagocytes; GB, nutritive phagocytes with nutritive droplets. Scale bars: (a)= 100 μm and (b)= 50 μm.

**Table S1.** RNAseq raw-data (NCBI Sequence Read Archive database) found for *M. galloprovincialis*

Bioproject	SRA accession	Species	Tissue
PRJNA88481	SRR442036	<i>Mytilus galloprovincialis</i>	digestive gland
PRJNA230138	SRR1046119	<i>Mytilus galloprovincialis</i>	gills
PRJNA230138	SRR1042397	<i>Mytilus galloprovincialis</i>	hemocytes
PRJNA230138	SRR1045900	<i>Mytilus galloprovincialis</i>	hemocytes
PRJNA230138	SRR1046115	<i>Mytilus galloprovincialis</i>	mantle
PRJNA230138	SRR1046116	<i>Mytilus galloprovincialis</i>	mantle
PRJNA638821	SRR11996464	<i>Mytilus galloprovincialis</i>	gills
PRJNA638821	SRR11996686	<i>Mytilus galloprovincialis</i>	gills
PRJNA638821	SRR11996723	<i>Mytilus galloprovincialis</i>	gills

PRJNA611904	SRR11285774	<i>Mytilus galloprovincialis</i>	digestive gland
PRJNA611904	SRR11285775	<i>Mytilus galloprovincialis</i>	digestive gland
<b>Bioproject</b>	<b>SRA accession</b>	<b>Species</b>	<b>Tissue</b>
PRJNA611904	SRR11285777	<i>Mytilus galloprovincialis</i>	digestive gland
PRJNA611904	SRR11285778	<i>Mytilus galloprovincialis</i>	digestive gland
PRJNA560413	SRR9984957	<i>Mytilus galloprovincialis</i>	mantle
PRJNA560413	SRR9984958	<i>Mytilus galloprovincialis</i>	mantle
PRJNA560413	SRR9984959	<i>Mytilus galloprovincialis</i>	mantle
PRJNA560413	SRR9984960	<i>Mytilus galloprovincialis</i>	mantle
PRJNA560413	SRR9984961	<i>Mytilus galloprovincialis</i>	mantle
PRJNA560413	SRR9984962	<i>Mytilus galloprovincialis</i>	mantle
PRJNA560413	SRR9984963	<i>Mytilus galloprovincialis</i>	mantle
PRJNA560413	SRR9984964	<i>Mytilus galloprovincialis</i>	mantle
PRJNA560413	SRR9984965	<i>Mytilus galloprovincialis</i>	mantle
PRJNA560413	SRR9984966	<i>Mytilus galloprovincialis</i>	mantle
PRJNA560413	SRR9984967	<i>Mytilus galloprovincialis</i>	mantle
PRJNA560413	SRR9984968	<i>Mytilus galloprovincialis</i>	mantle
PRJNA560413	SRR9984975	<i>Mytilus galloprovincialis</i>	mantle
PRJNA560413	SRR9984976	<i>Mytilus galloprovincialis</i>	mantle
PRJNA560413	SRR9984977	<i>Mytilus galloprovincialis</i>	mantle
PRJNA560413	SRR9984978	<i>Mytilus galloprovincialis</i>	mantle
PRJNA560413	SRR9984979	<i>Mytilus galloprovincialis</i>	mantle
PRJNA560413	SRR9984980	<i>Mytilus galloprovincialis</i>	mantle
PRJNA560413	SRR9984981	<i>Mytilus galloprovincialis</i>	mantle
PRJNA560413	SRR9984982	<i>Mytilus galloprovincialis</i>	mantle
PRJNA560413	SRR9984983	<i>Mytilus galloprovincialis</i>	mantle
PRJNA560413	SRR9984984	<i>Mytilus galloprovincialis</i>	mantle
PRJNA560413	SRR9984985	<i>Mytilus galloprovincialis</i>	mantle
PRJNA560413	SRR9984986	<i>Mytilus galloprovincialis</i>	mantle
PRJNA560413	SRR9984987	<i>Mytilus galloprovincialis</i>	mantle
PRJNA560413	SRR9984988	<i>Mytilus galloprovincialis</i>	mantle
PRJNA560413	SRR9984989	<i>Mytilus galloprovincialis</i>	mantle
PRJNA560413	SRR9984991	<i>Mytilus galloprovincialis</i>	mantle
PRJNA560413	SRR9984992	<i>Mytilus galloprovincialis</i>	mantle
PRJNA560413	SRR9984993	<i>Mytilus galloprovincialis</i>	mantle
PRJNA560413	SRR9984994	<i>Mytilus galloprovincialis</i>	mantle
PRJNA560413	SRR9984995	<i>Mytilus galloprovincialis</i>	mantle
PRJNA560413	SRR9984996	<i>Mytilus galloprovincialis</i>	mantle
PRJNA561723	SRR10015745	<i>Mytilus galloprovincialis</i>	digestive gland
PRJNA561723	SRR10015746	<i>Mytilus galloprovincialis</i>	digestive gland
PRJNA561723	SRR10015747	<i>Mytilus galloprovincialis</i>	digestive gland
PRJNA561723	SRR10015748	<i>Mytilus galloprovincialis</i>	digestive gland
PRJNA561723	SRR10015749	<i>Mytilus galloprovincialis</i>	digestive gland
PRJNA561723	SRR10015750	<i>Mytilus galloprovincialis</i>	digestive gland
PRJNA561723	SRR10015751	<i>Mytilus galloprovincialis</i>	digestive gland
PRJNA561723	SRR10015757	<i>Mytilus galloprovincialis</i>	digestive gland
PRJNA561723	SRR10015766	<i>Mytilus galloprovincialis</i>	digestive gland

PRJNA561723	SRR10015772	<i>Mytilus galloprovincialis</i>	digestive gland
PRJNA561723	SRR10015783	<i>Mytilus galloprovincialis</i>	digestive gland
<b>Bioproject</b>	<b>SRA accession</b>	<b>Species</b>	<b>Tissue</b>
PRJNA451093	SRR7044533	<i>Mytilus galloprovincialis</i>	mantle
PRJNA526432	SRR8707268	<i>Mytilus galloprovincialis</i>	gills
PRJNA484309	SRR7640805	<i>Mytilus galloprovincialis</i>	gills
PRJNA484309	SRR7640807	<i>Mytilus galloprovincialis</i>	gills
PRJNA484309	SRR7640808	<i>Mytilus galloprovincialis</i>	gills
PRJNA484309	SRR7640811	<i>Mytilus galloprovincialis</i>	gills
PRJNA484309	SRR7640812	<i>Mytilus galloprovincialis</i>	gills
PRJNA484309	SRR7640813	<i>Mytilus galloprovincialis</i>	gills
PRJNA484309	SRR7640814	<i>Mytilus galloprovincialis</i>	gills
PRJNA484309	SRR7640818	<i>Mytilus galloprovincialis</i>	gills
PRJNA484309	SRR7640820	<i>Mytilus galloprovincialis</i>	gills
PRJNA484309	SRR7640821	<i>Mytilus galloprovincialis</i>	gills
PRJNA525609	SRR8713540	<i>Mytilus galloprovincialis</i>	mantle
PRJNA525609	SRR8713541	<i>Mytilus galloprovincialis</i>	mantle
PRJNA525609	SRR8713542	<i>Mytilus galloprovincialis</i>	mantle
PRJNA525609	SRR8713543	<i>Mytilus galloprovincialis</i>	mantle
PRJNA525609	SRR8713544	<i>Mytilus galloprovincialis</i>	mantle
PRJNA525609	SRR8713545	<i>Mytilus galloprovincialis</i>	mantle
PRJNA525609	SRR8713546	<i>Mytilus galloprovincialis</i>	mantle
PRJNA525609	SRR8713547	<i>Mytilus galloprovincialis</i>	mantle
PRJNA486919	SRR7725723	<i>Mytilus galloprovincialis</i>	gills
PRJNA470760	SRR7145588	<i>Mytilus galloprovincialis</i>	hemocytes
PRJNA470760	SRR7145589	<i>Mytilus galloprovincialis</i>	hemocytes
PRJNA470760	SRR7145590	<i>Mytilus galloprovincialis</i>	hemocytes
PRJNA407401	SRR6041063	<i>Mytilus galloprovincialis</i>	digestive gland
PRJNA407401	SRR6041064	<i>Mytilus galloprovincialis</i>	digestive gland
PRJNA407401	SRR6041065	<i>Mytilus galloprovincialis</i>	digestive gland
PRJNA407401	SRR6041066	<i>Mytilus galloprovincialis</i>	digestive gland
PRJNA326100	SRR6238453	<i>Mytilus galloprovincialis</i>	digestive gland
PRJNA326100	SRR6238454	<i>Mytilus galloprovincialis</i>	digestive gland
PRJNA326100	SRR6238455	<i>Mytilus galloprovincialis</i>	digestive gland
PRJNA326100	SRR6238446	<i>Mytilus galloprovincialis</i>	digestive gland
PRJNA326100	SRR6238447	<i>Mytilus galloprovincialis</i>	digestive gland

**Table S2.** RNAseq raw-data (NCBI Sequence Read Archive database) found for *P. lividus* and *S. purpuratus*

Bioproject	SRA accession	Species	Tissue
PRJNA625933	SRR11561266	<i>Paracentrotus lividus</i>	testis
PRJNA625934	SRR11561267	<i>Paracentrotus lividus</i>	testis
PRJNA625935	SRR11561268	<i>Paracentrotus lividus</i>	testis
PRJNA625936	SRR11561269	<i>Paracentrotus lividus</i>	ovary
PRJNA625937	SRR11561270	<i>Paracentrotus lividus</i>	ovary
PRJNA625938	SRR11561271	<i>Paracentrotus lividus</i>	ovary
PRJNA264358	SRR1664663	<i>Paracentrotus lividus</i>	0hpf*
PRJNA264358	SRR1735496	<i>Paracentrotus lividus</i>	4hpf*
PRJNA264358	SRR1735498	<i>Paracentrotus lividus</i>	18hpf*
PRJNA264358	SRR1735500	<i>Paracentrotus lividus</i>	24hpf*
PRJNA264358	SRR1735501	<i>Paracentrotus lividus</i>	48hpf*
PRJNA81157	SRR531953	<i>Strongylocentrotus purpuratus</i>	coelomocytes
PRJNA81157	SRR531955	<i>Strongylocentrotus purpuratus</i>	gut
PRJNA81157	SRR531958	<i>Strongylocentrotus purpuratus</i>	ovary
PRJNA81157	SRR532121	<i>Strongylocentrotus purpuratus</i>	testis
PRJNA531297	SRR8863032	<i>Strongylocentrotus purpuratus</i>	unfertilized eggs

\*used only for the de novo transcriptome assembly