

Supplementary material

A Glimpse at siderophores production by *Anabaena Flos-aquae* UTEX 1444

Roberta Teta¹, Germana Esposito¹, Karishma Kundu¹, Mariano Stornaiuolo², Silvia Scarpato¹, Antonino Pollio³, and Valeria Costantino^{1*}

¹ "TheBlueChemistryLab", Department of Pharmacy, Task force "BIGFED2", University of Naples Federico II, via Domenico Montesano 49, 80131 Napoli, Italy; roberta.teta@unina.it (R.T.), germana.esposito@unina.it (G.E.), karishma.kundu@unina.it (K.K.), mariano.stornaiuolo@unina.it (M.S.), silvia.scarpato@unina.it (S.S.), valeria.costantino@unina.it (V.C.)

² Department of Pharmacy, University of Naples Federico II, via Domenico Montesano 49, 80131 Napoli, Italy; mariano.stornaiuolo@unina.it (M.S.)

³ Department of Biology, University of Naples Federico II, Complesso Universitario Monte Sant'Angelo via Cinthia – Edificio 7, 80126 Napoli, Italy; antonino.pollio@unina.it (A.P.)

* Correspondence: valeria.costantino@unina.it (V.C.)

Table of contents

Figure S1. Global molecular network of <i>A. flos-aquae</i> UTEX 1444's extracts	p. 4
Figure S2. MS/MS spectrum of schizokinen (1).....	p. 5
Figure S3. MS/MS spectrum of synechobactin A (2).....	p. 4
Figure S4. MS/MS spectrum of synechobactin B (3)	p. 4
Figure S5. MS/MS spectrum of synechobactin C ₁₄ (4).....	p. 4
Figure S6. MS/MS spectrum of synechobactin C ₁₆ (5).....	p. 4
Figure S7. MS/MS spectrum of putative synechobactin C _{16:1} (6).....	p. 4
Figure S8. MS/MS spectrum of putative synechobactin oxyC ₁₄ (7).....	p. 4
Figure S9. MS/MS spectrum of putative synechobactin oxyC _{14:1} (8)	p. 4
Figure S10. MS/MS spectrum of putative desacetyl-synechobactin A (9)	p. 4
Figure S11. MS/MS spectrum of putative desacetyl-synechobactin C ₁₄ (10).....	p. 4
Figure S12. MS/MS spectrum of putative deoxysynechobactin C ₁₄ (11)	p. 4
Figure S13. MS/MS spectrum of putative deoxysynechobactin C _{14:1} (12)	p. 4

F: FTMS + c ESI d Full ms2 421.19@cid35.00 [105.00-435.00]

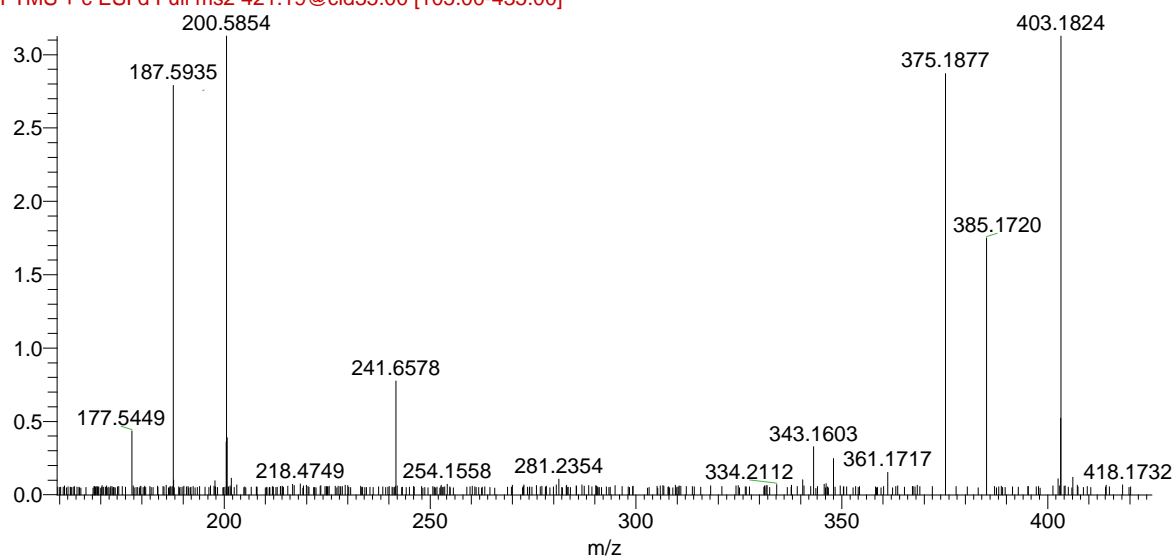


Figure S2. MS/MS spectrum of schizokinen (1)

F: FTMS + c ESI d Full ms2 561.35@cid35.00 [140.00-575.00]

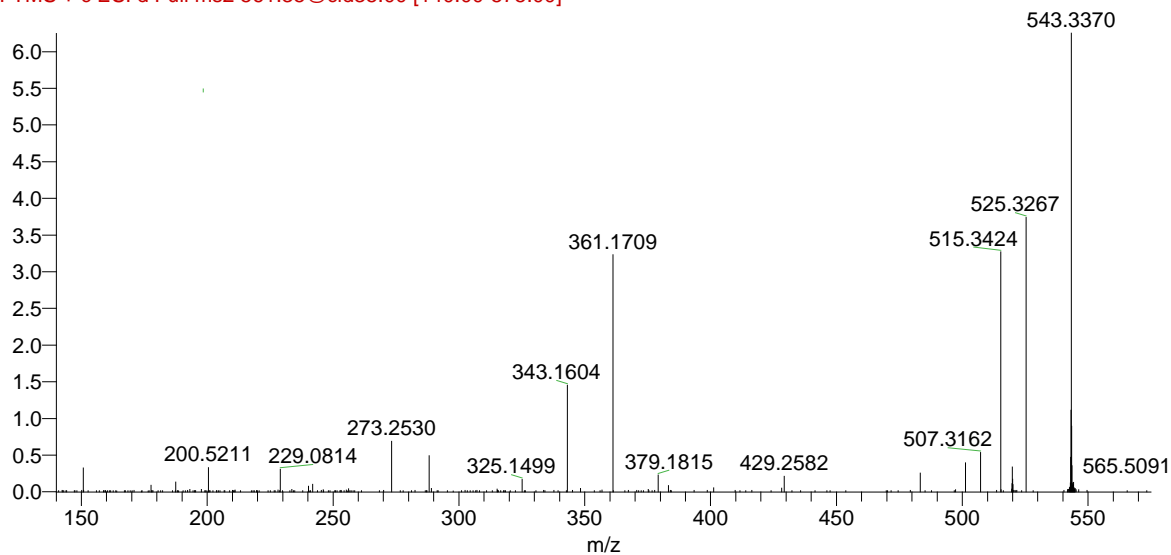


Figure S3. MS/MS spectrum of synechobactin A (2)

F: FTMS + c ESI d Full ms2 533.32@cid35.00 [135.00-545.00]

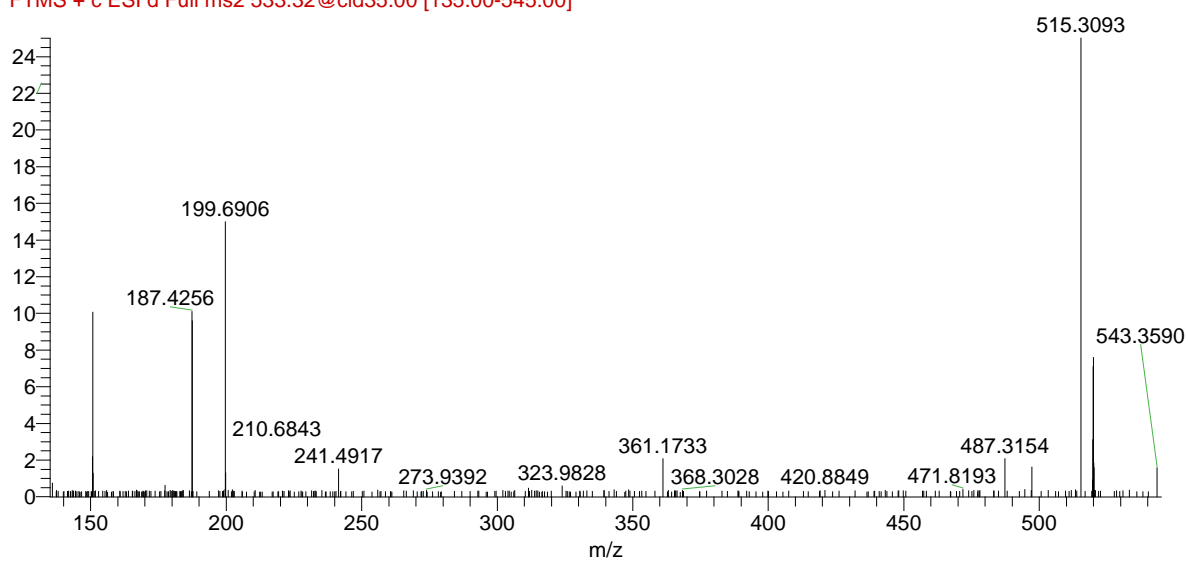


Figure S4. MS/MS spectrum of synechobactin B (3)

F: FTMS + c ESI d Full ms2 589.38@cid35.00 [150.00-600.00]

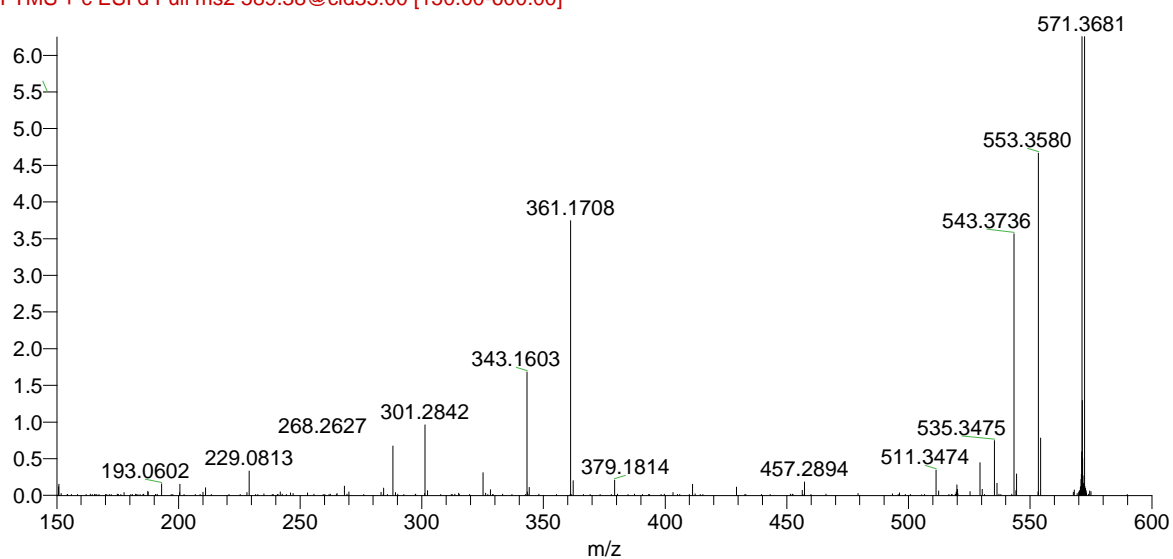


Figure S5. MS/MS spectrum of synechobactin C₁₄ (4)

F: FTMS + c ESI d Full ms2 617.41@cid35.00 [155.00-630.00]

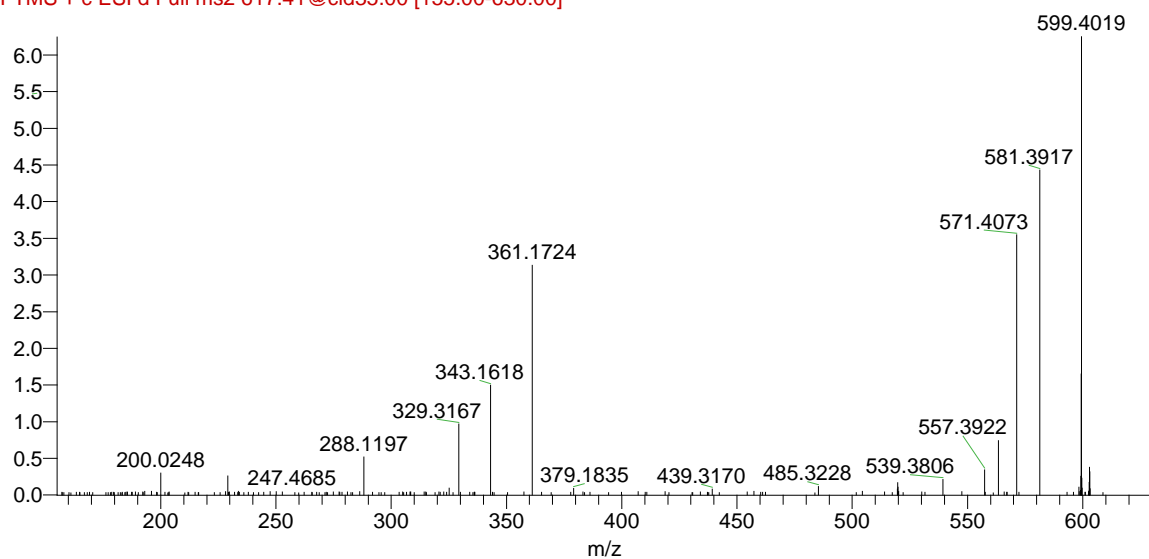


Figure S6. MS/MS spectrum of synechobactin C₁₆ (5)

F: FTMS + c ESI d Full ms2 615.39@cid35.00 [155.00-630.00]

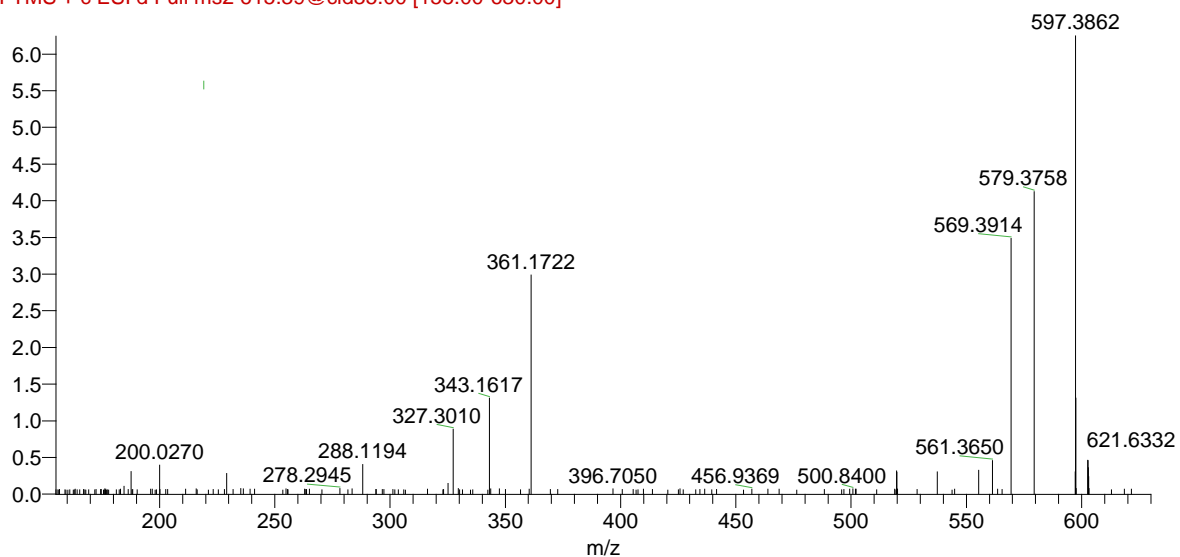


Figure S7. MS/MS spectrum of putative synechobactin C_{16:1} (6)

F: FTMS + c ESI d Full ms2 605.37@cid35.00 [155.00-620.00]

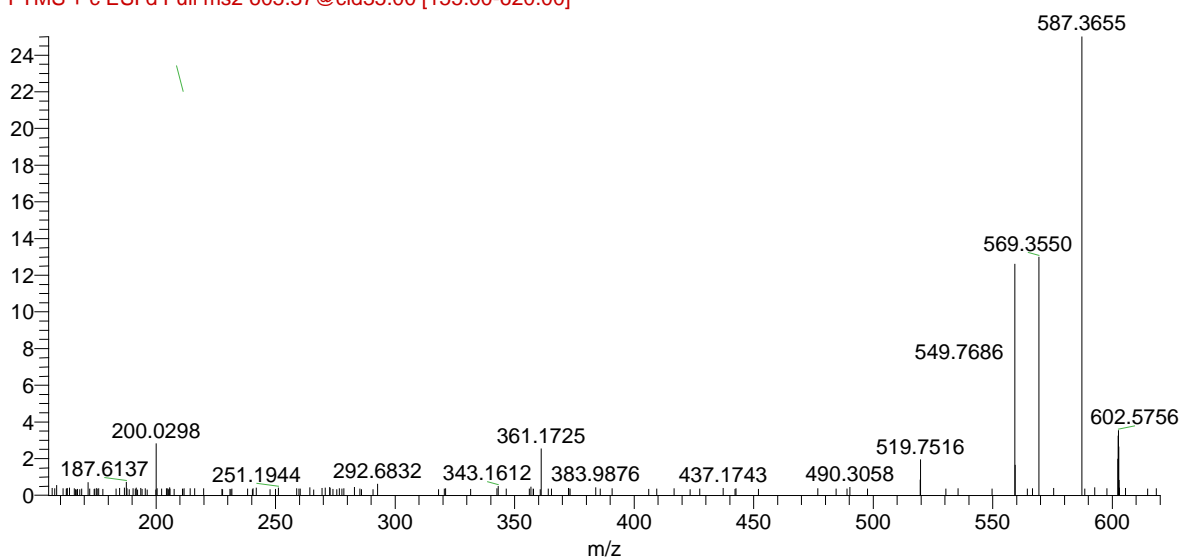


Figure S8. MS/MS spectrum of putative synechobactin oxyC₁₄ (7)

F: FTMS + c ESI d Full ms2 603.31@cid35.00 [155.00-615.00]

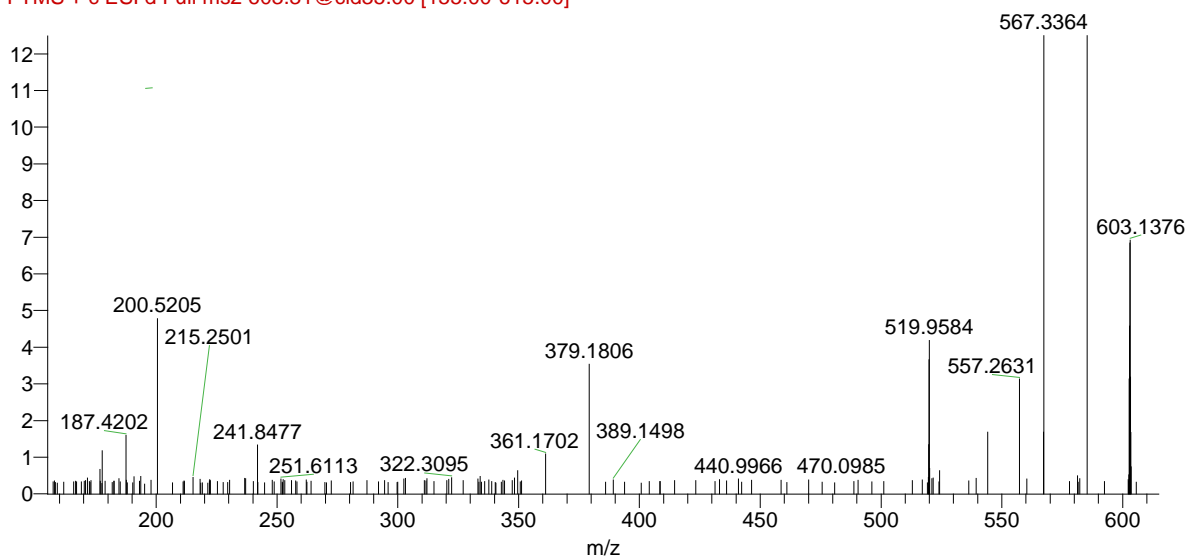


Figure S9. MS/MS spectrum of putative synechobactin oxyC_{14:1} (8)

F: FTMS + c ESI d Full ms2 517.32@cid35.00 [130.00-530.00]

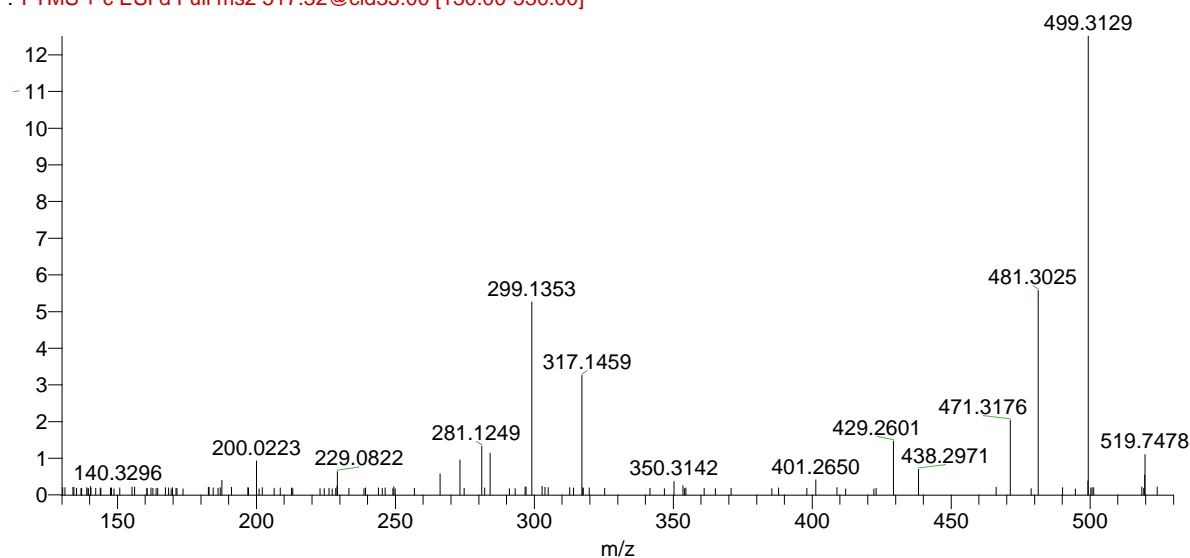


Figure S10. MS/MS spectrum of putative desacetyl-synechobactin A (9)

F: FTMS + c ESI d Full ms2 545.35@cid35.00 [140.00-560.00]

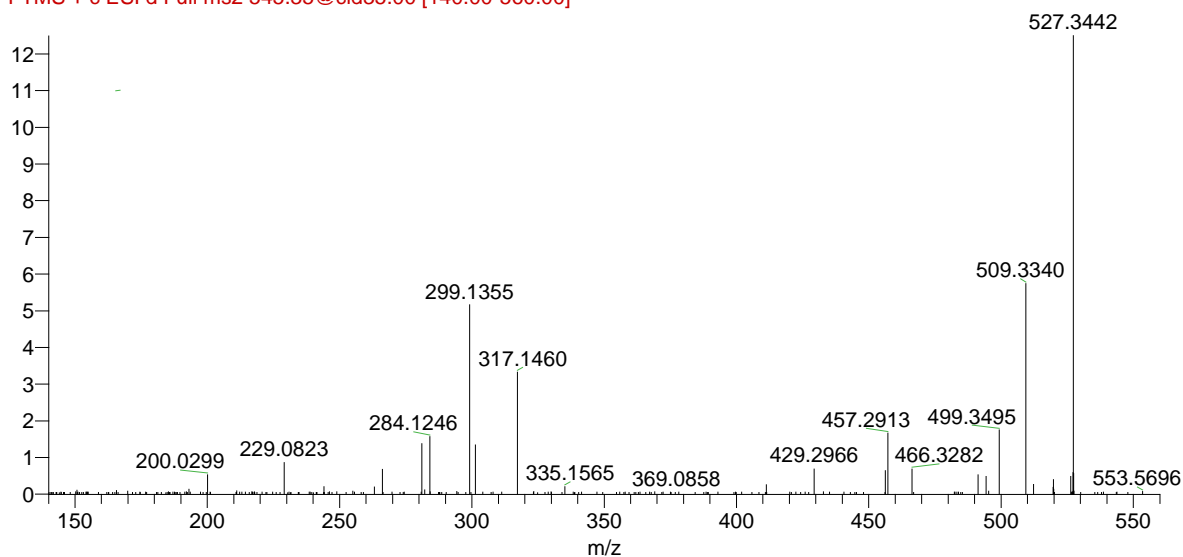


Figure S11. MS/MS spectrum of putative desacetyl-synechobactin C₁₄ (10)

F: FTMS + c ESI d Full ms2 573.38@cid35.00 [145.00-585.00]

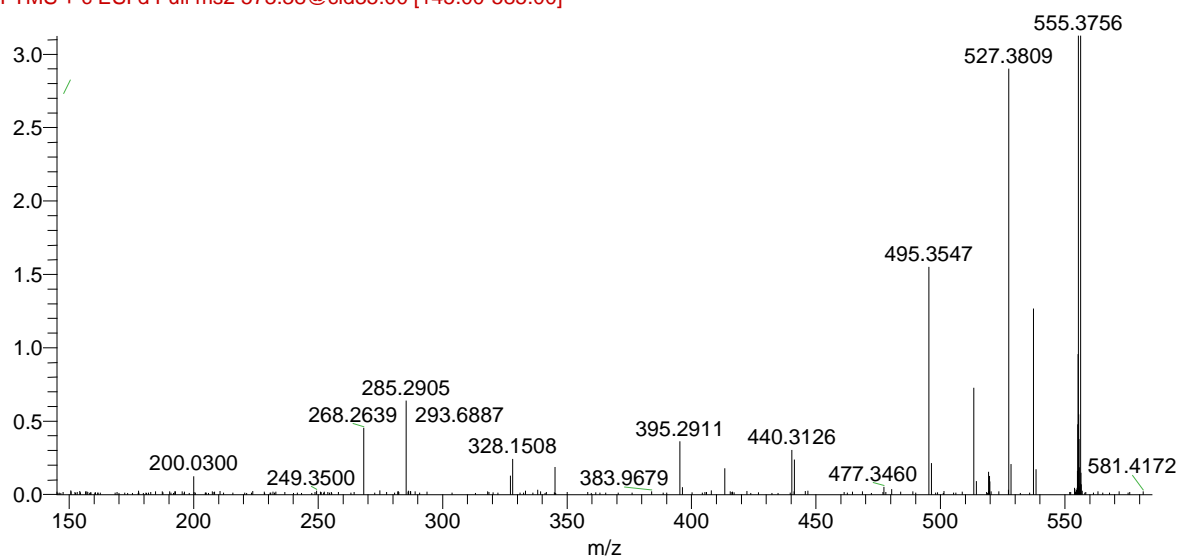


Figure S12. MS/MS spectrum of putative deoxysynechobactin C₁₄ (11)

F: FTMS + c ESI d Full ms2 571.37@cid35.00 [145.00-585.00]

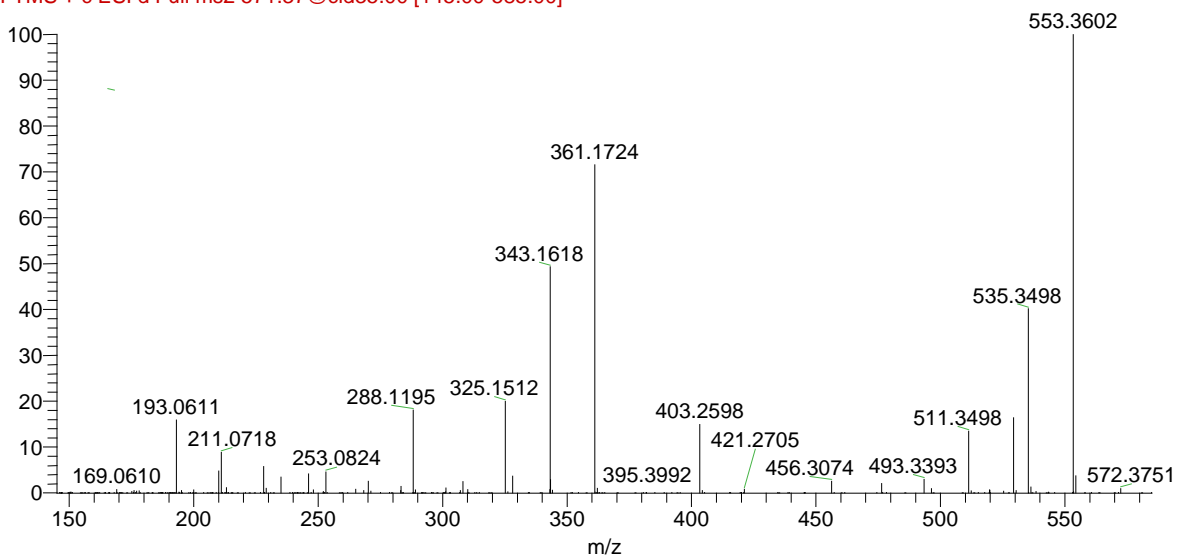


Figure S13. MS/MS spectrum of putative deoxysynechobactin C_{14:1} (12)