

A tale of toxin promiscuity: The versatile pharmacological effects of Hcr 1b-2 sea anemone peptide on voltage-gated ion channels

Ernesto Lopes Pinheiro-Junior^{1*}, Rimma Kalina², Irina Gladkikh², Elena Leychenko², Jan Tytgat^{1*}, Steve Peigneur^{1*}

Supplementary material

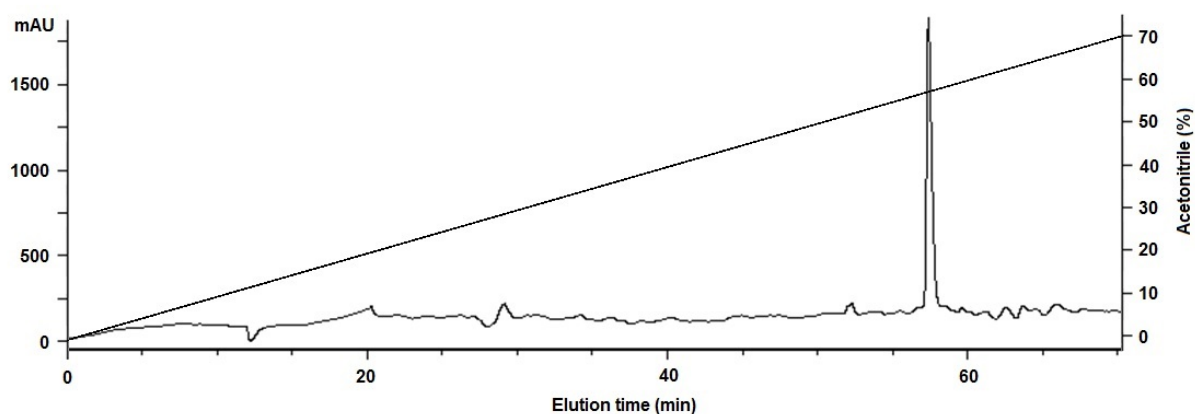


Figure S1. RP-HPLC performed on a Luna C18 column (10 × 250 mm, Phenomenex, USA), equilibrated with 10% acetonitrile solution in 0.1% trifluoroacetic acid (TFA) on an Agilent 1100 chromatograph (Agilent Technologies, USA). Elution was carried out in a linear gradient of acetonitrile concentration from 0 to 70% in 0.1 % trifluoroacetic acid, for 70 minutes. Flow rate: 1.5 mL/min.

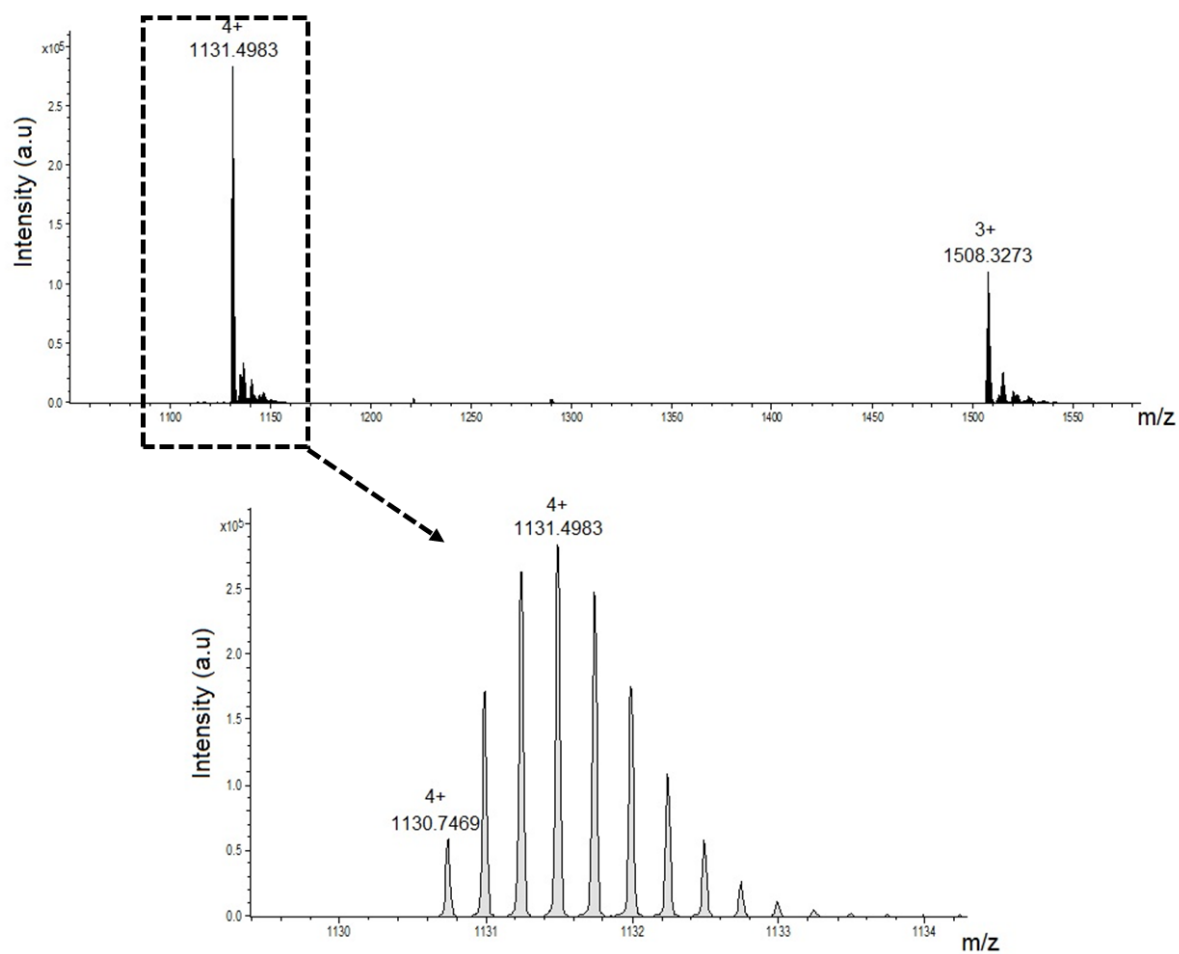


Figure S2. ESI mass spectrum of Hcr 1b-2. Calculated average and monoisotopic molecular masses are 4522.3206 and 4519.0042 Da, measured 4521.9614 and 4518.9564 Da, respectively.