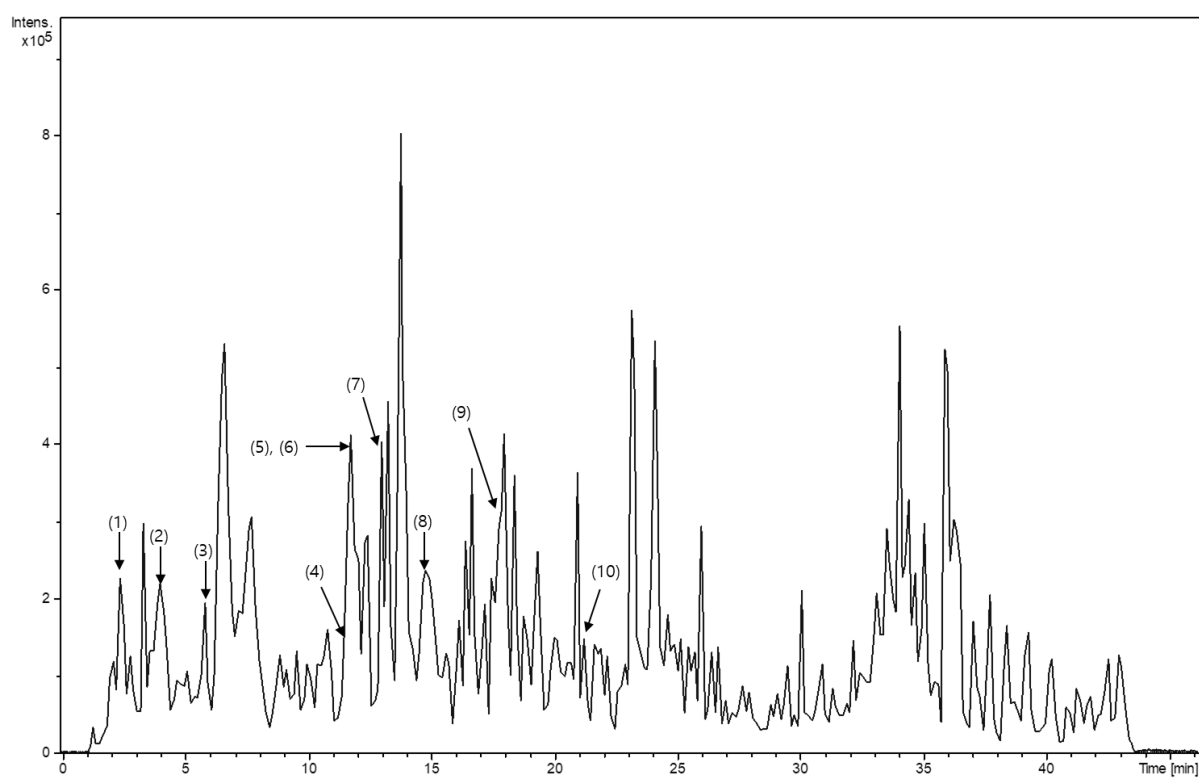
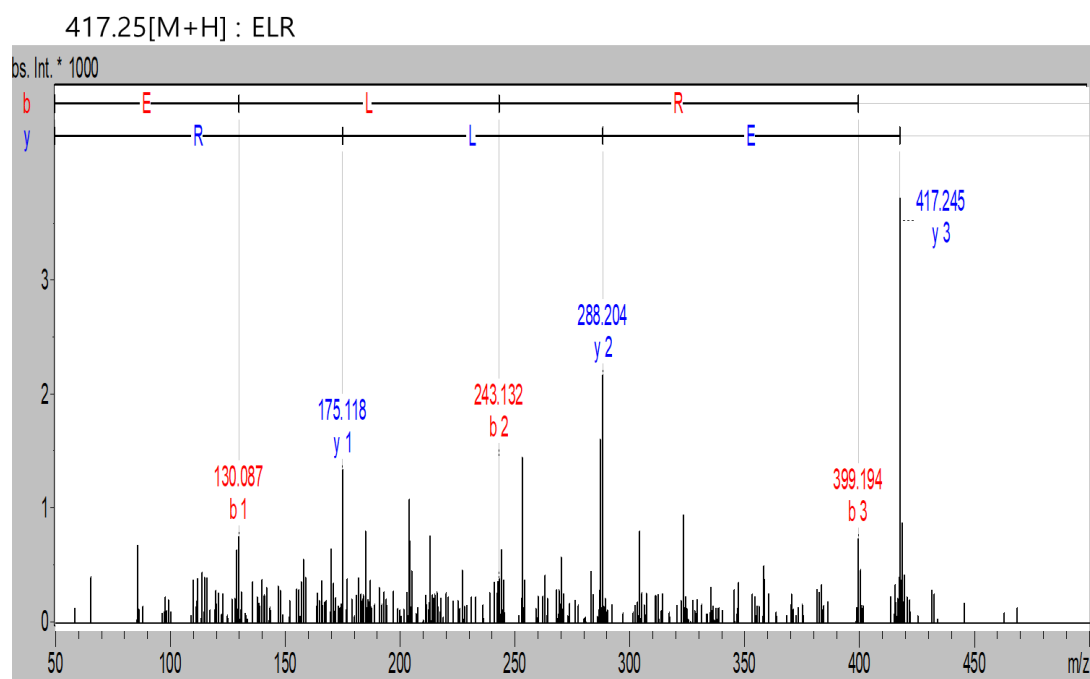


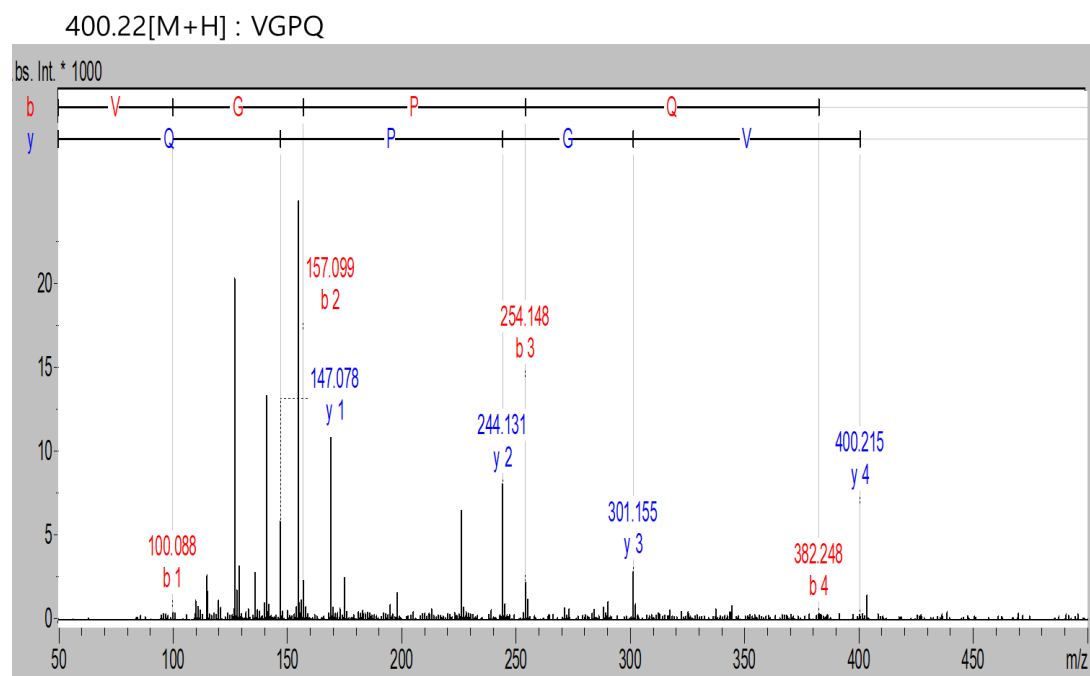
## Supplementary materials



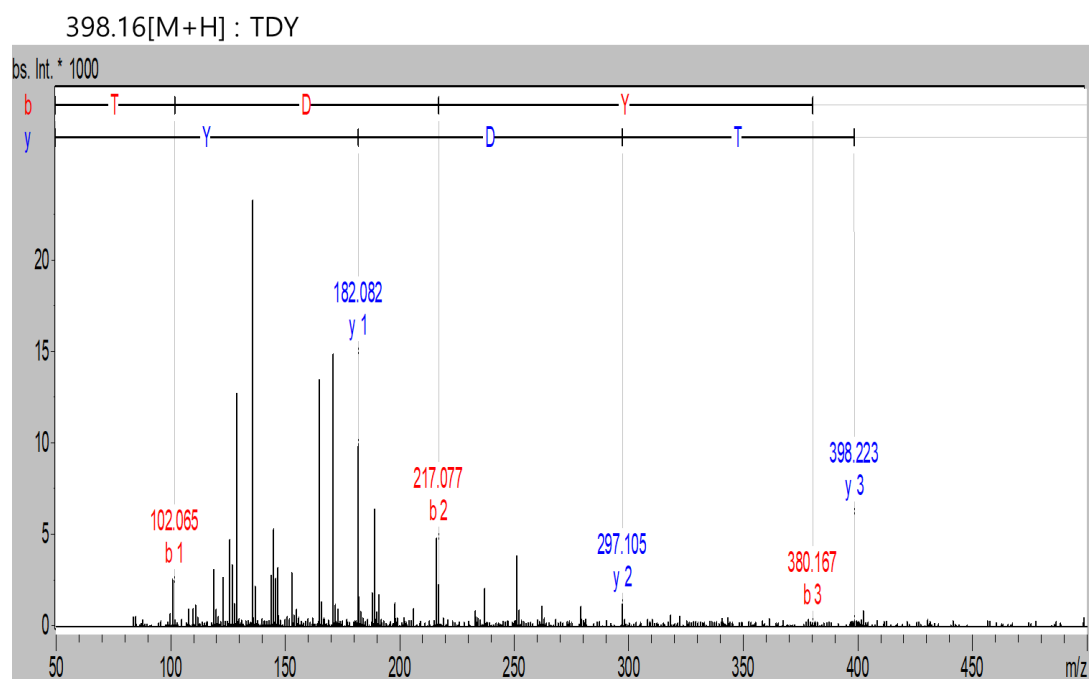
**Figure. S1.** LC-MS/MS chromatogram of TVP-GFC-3



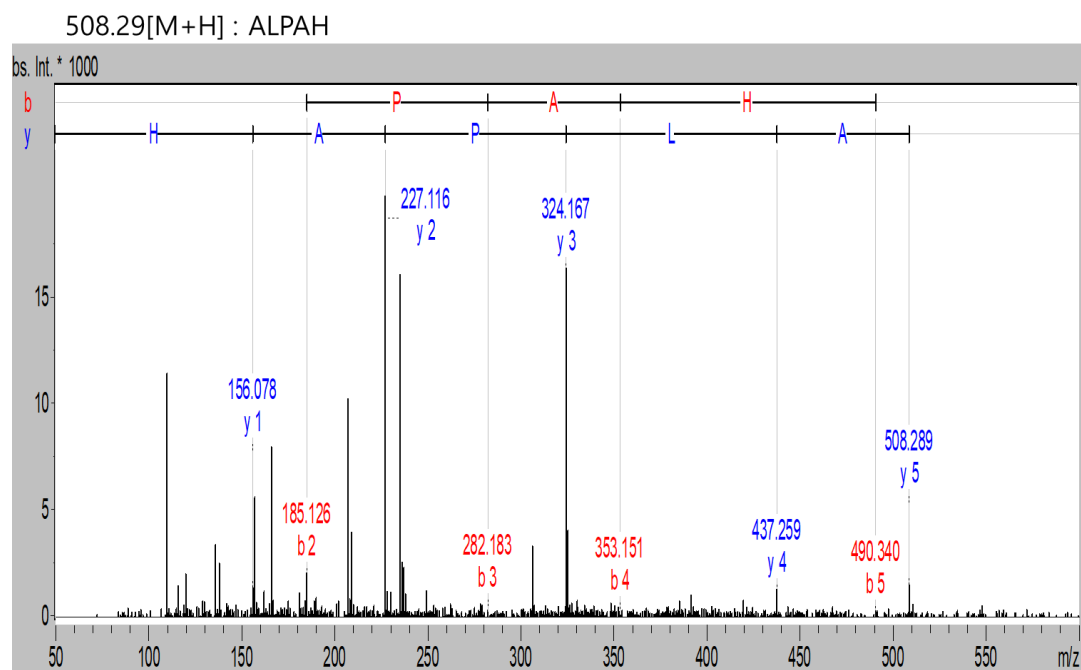
**Figure. S2.** MS/MS sequencing of bioactive peptide, ELR



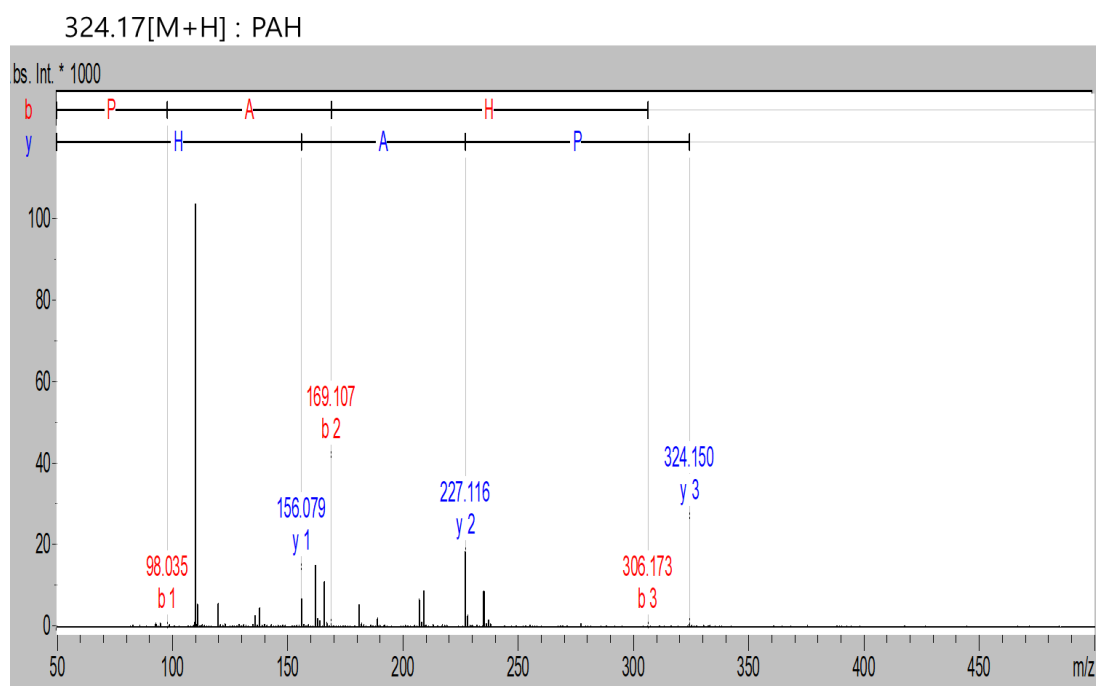
**Figure. S3.** MS/MS sequencing of bioactive peptide, VG PQ



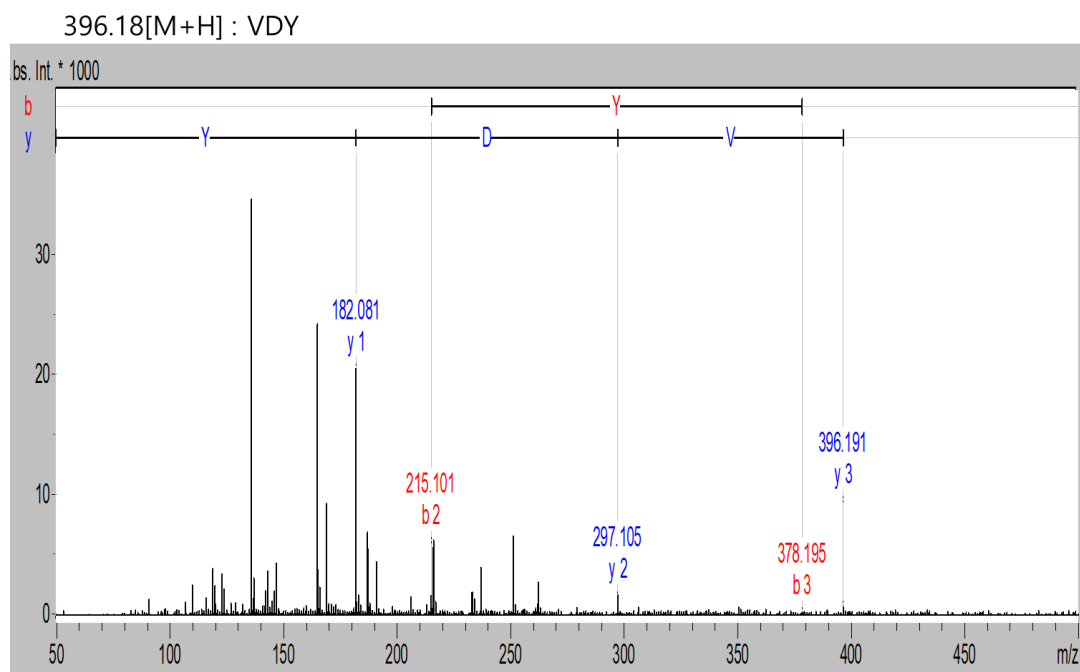
**Figure. S4.** MS/MS sequencing of bioactive peptide, TDY



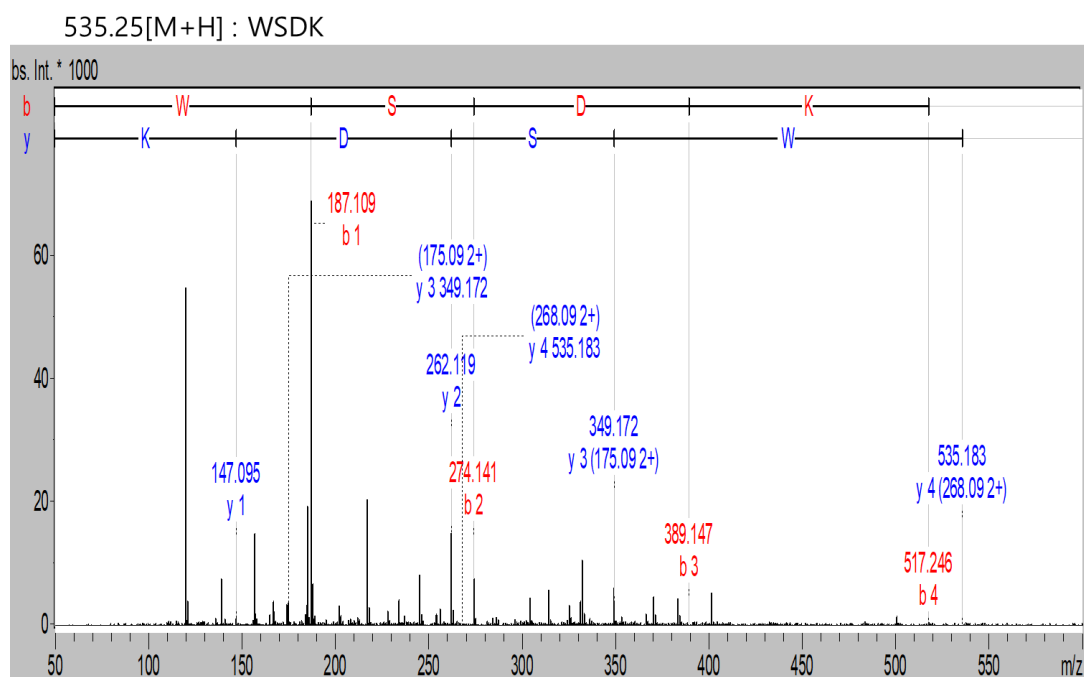
**Figure. S5.** MS/MS sequencing of bioactive peptide, ALPAH



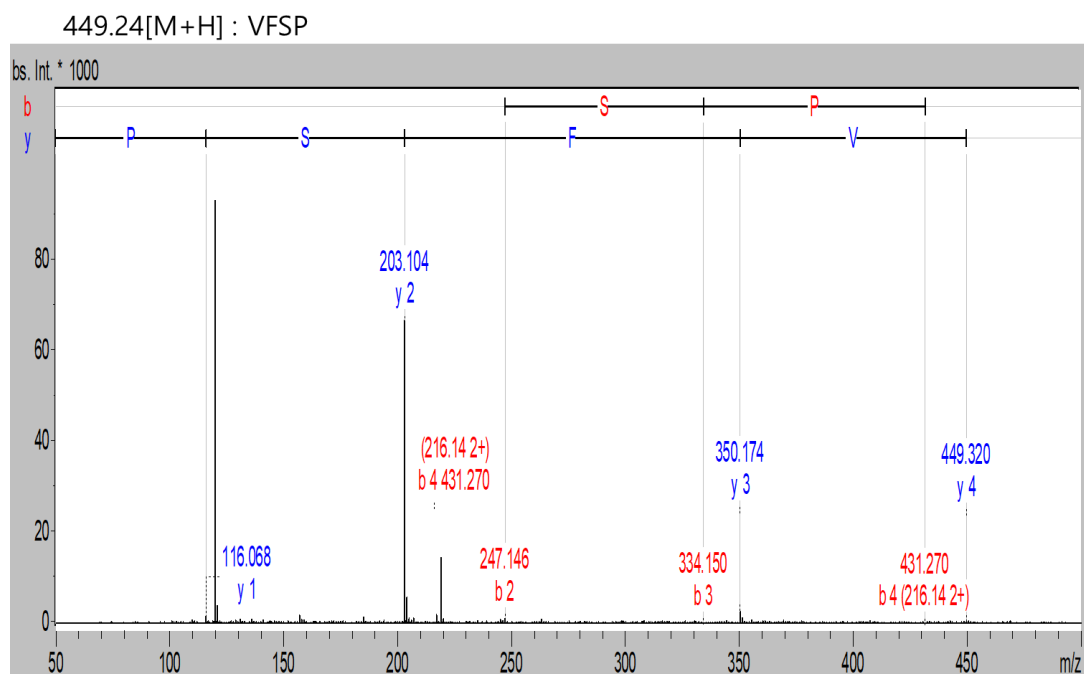
**Figure. S6.** MS/MS sequencing of bioactive peptide, PAH



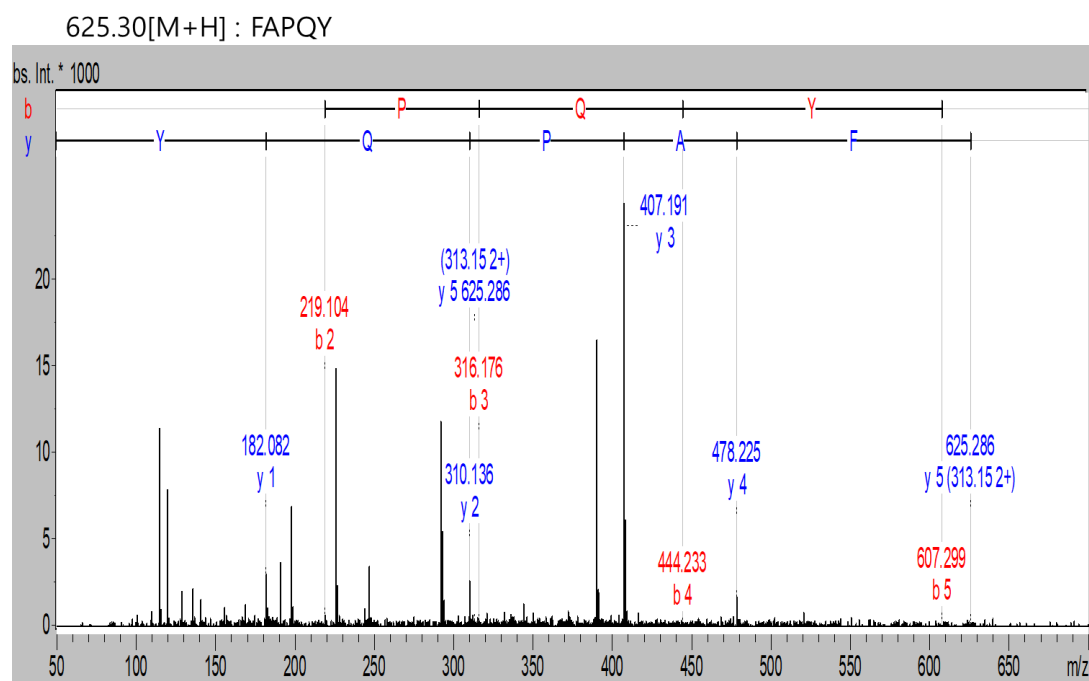
**Figure. S7.** MS/MS sequencing of bioactive peptide, VDY



**Figure. S8.** MS/MS sequencing of bioactive peptide, WSDK



**Figure. S9.** MS/MS sequencing of bioactive peptide, VFSP



**Figure. S10.** MS/MS sequencing of bioactive peptide, FAPQY