

Article

Effect of infill density of the printed PET-G structures containing iron oxides on magnetic properties

Lucie Zářbynická^{1,2*}, Martin Marek^{1,3}, Radek Ševčík^{2,4}, Radek Stolín⁵, Jaroslav Pokorný⁴, Jiří Šál⁴

- ¹ College of Polytechnics Jihlava, Department of Technical studies, Tolstého 16, 586 01 Jihlava, Czech Republic² Institute of Theoretical and Applied Mechanics of the Czech Academy of Sciences, Centre Telč, Prosecká 809/76, 190 00 Praha 9, Czech Republic
³ Technical University of Ostrava, IT4Innovations, Czech Republic, Studentská 6231/1B, 708 00 Ostrava-Poruba, Czech Republic
⁴ Department of Civil Engineering, Faculty of Technology, Institute of Technology and Business, Okružní 517/10, 370 01 České Budějovice, Czech Republic
⁵ College of Polytechnics Jihlava, Department of Mathematics, Tolstého 16, 586 01 Jihlava, Czech Republic
* Correspondence: lucie.zarybnicka@vspj.cz

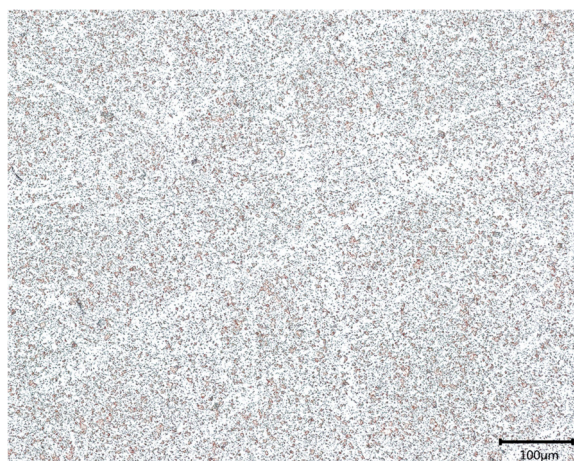


Figure S1. Image for analyze of additive particles using SW ImageJ.

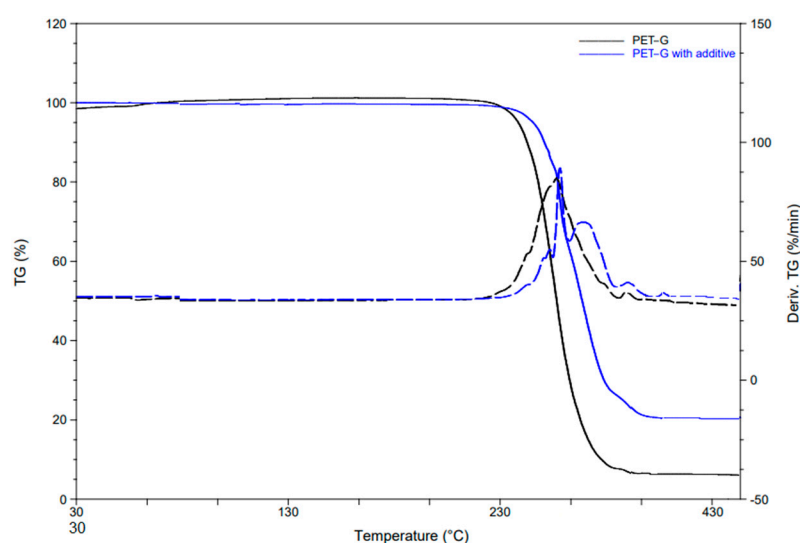


Figure S2. TGA graphs for both materials.