

Supplementary Materials

Modification of paper surface by *all*-lignin coating formulations

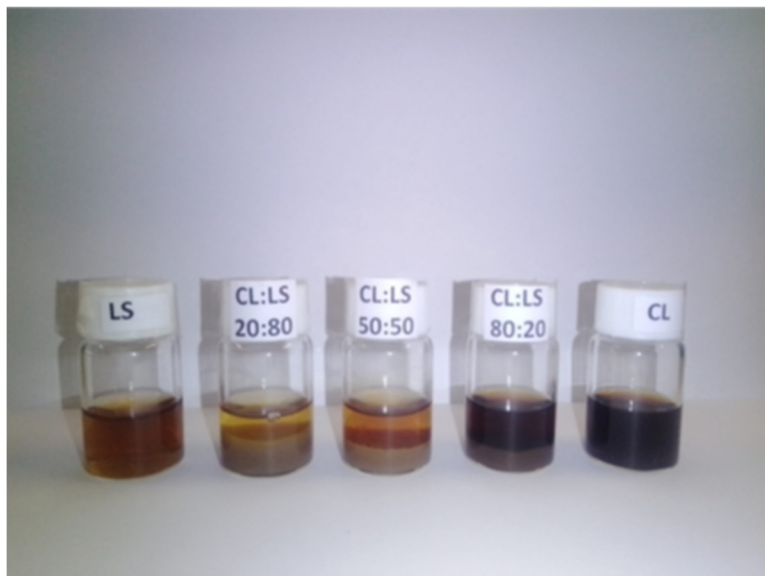


Figure S1. Mixtures (v/v) of 1 wt.% solutions of cationic eucalyptus lignin (CL) and eucalyptus lignosulphonates (LS).

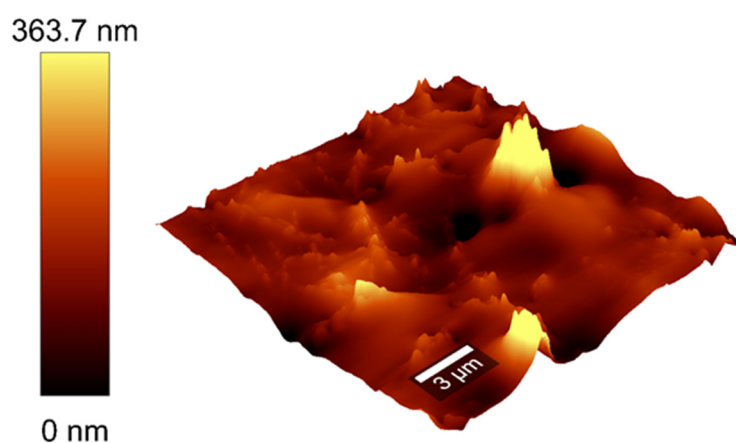


Figure S2. 3D AFM surface topology image of the glass lamina coated with CL. The size of image is of 20 x 20 μm.

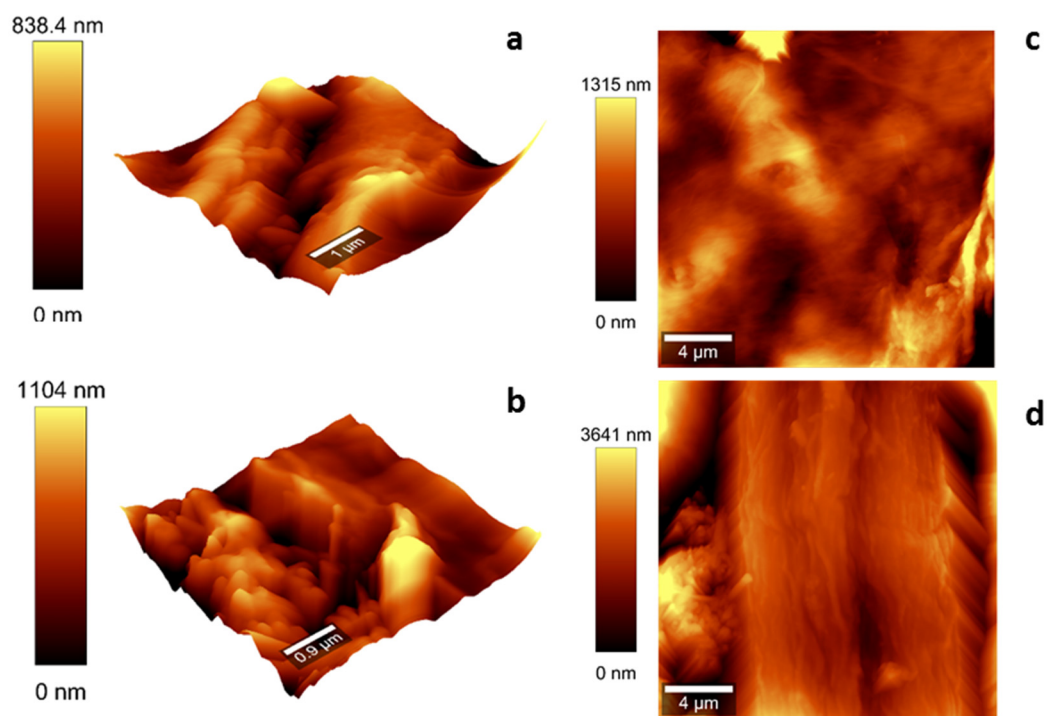


Figure S3. 3D (a, b) and 2D (c, d) AFM surface topology images of the uncoated (a, c) and (CL +LS) coated (b, d) industrial paper.