

Supporting Information

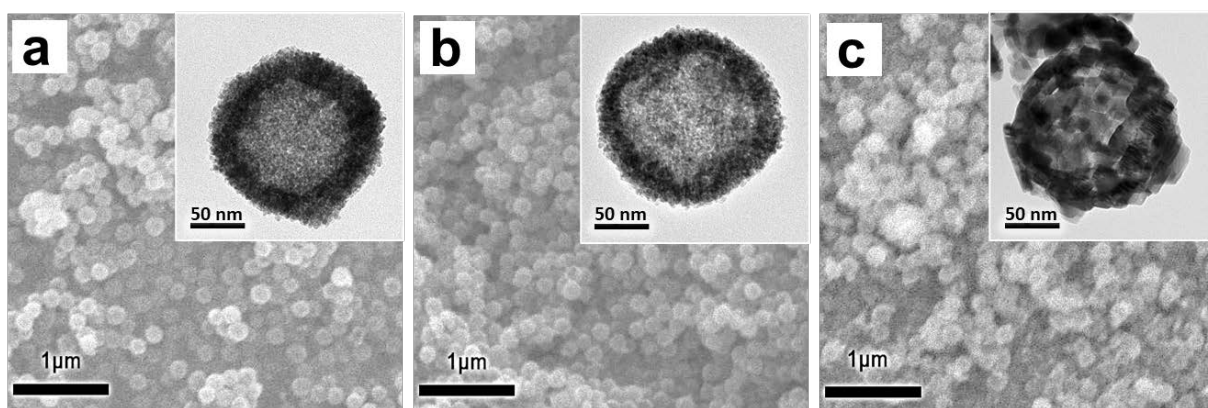


Figure S1. SEM images of H-Cu-CeO₂ catalysts: (a) H-Cu-CeO₂ (HT), (b) H-Cu-CeO₂ (500) and (c) H-Cu-CeO₂ (800)

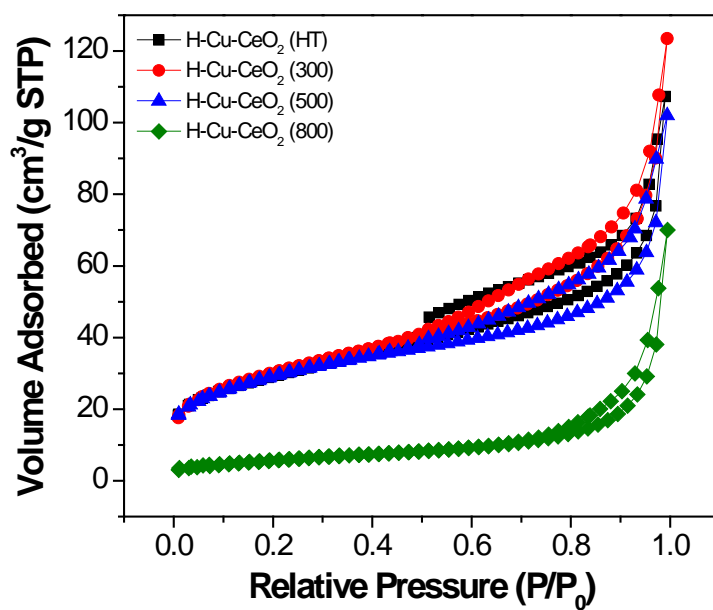


Figure S2. N₂ adsorption-desorption isotherms of H-Cu-CeO₂ catalysts

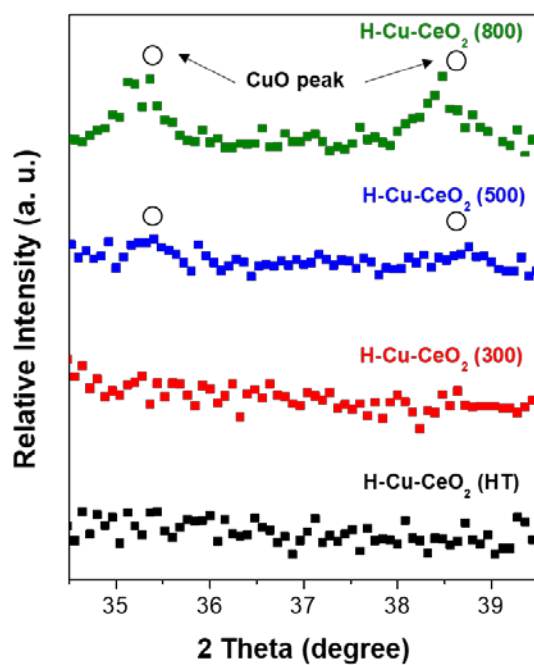


Figure S3. The XRD patterns of H-Cu-CeO₂ catalysts in the 2 theta range of 34.5 to 39.5°

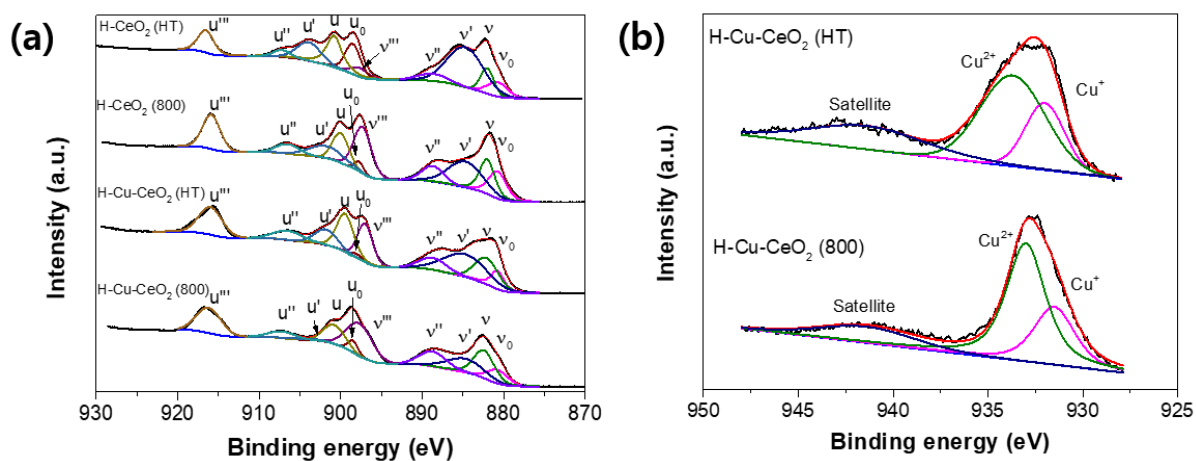


Figure S4. XPS results of H-CeO₂ (x) supports and H-Cu-CeO₂ (x) catalysts: (a) Ce 3d and (b) Cu 2p spectra

Table S1. Relative mass ratio and estimated CuO loading values of H-Cu-CeO₂ catalysts

Sample	Mass ratio			Cu/(Cu+Ce)	Estimated CuO/(CuO+CeO ₂)
	Cu	Ce	others		
H-Cu-CeO ₂ (HT)	0.1079	0.8724	0.0197	0.1101	0.1114
H-Cu-CeO ₂ (500)	0.1135	0.8675	0.0190	0.1157	0.1176
H-Cu-CeO ₂ (800)	0.1037	0.8754	0.0209	0.1059	0.1078