

Supplementary Material

Ethoxylated Butoxyethanol-BADGE Adducts—New Potential Migrants from Epoxy Resin Can Coating Material

Monika Beszterda ¹, Małgorzata Kasperkowiak ², Magdalena Frańska ³, Sandra Jęziołowska ⁴ and Rafał Frański ^{4,*}

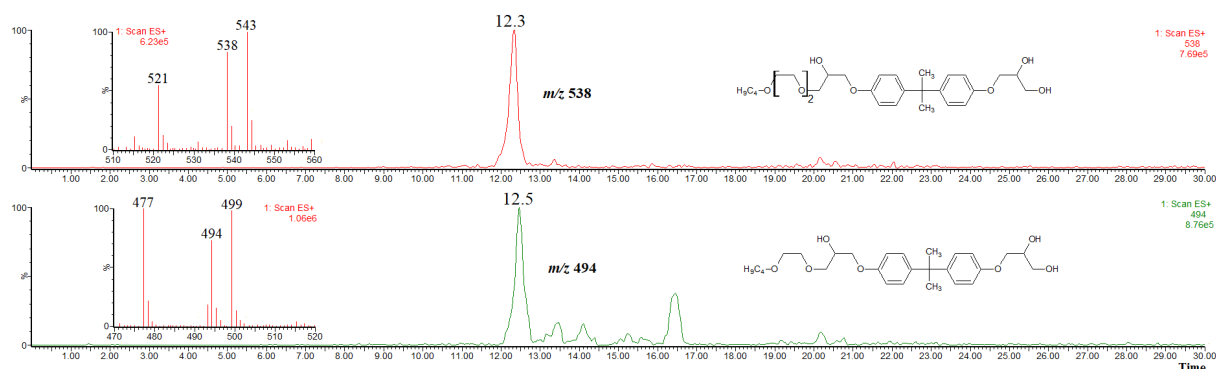


Figure S1. HPLC/ESI-MS detection of BADGE + BuEtOH + H₂O (M=476) and BADGE + Bu(EtO)₂H + H₂O (M=520).

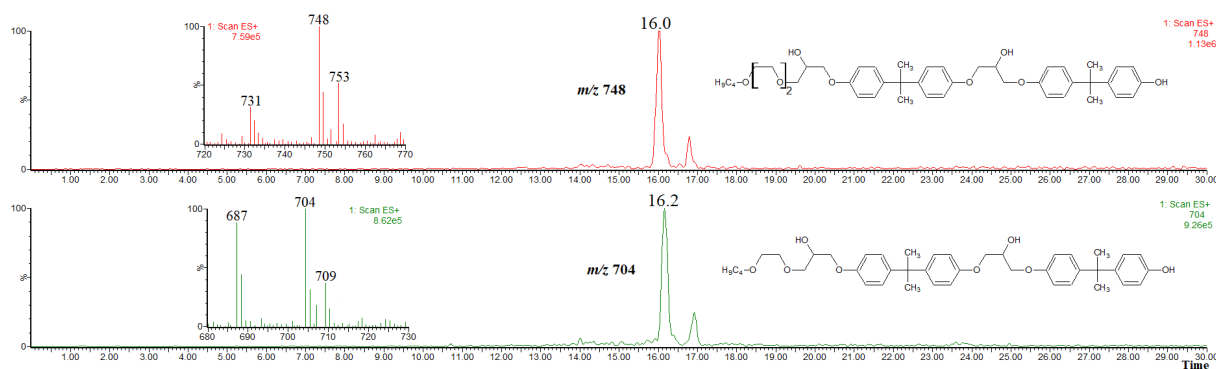


Figure S2. HPLC/ESI-MS detection of BADGE + BPA + BuEtOH (M=686) and BADGE + BPA + Bu(EtO)₂H (M=730).

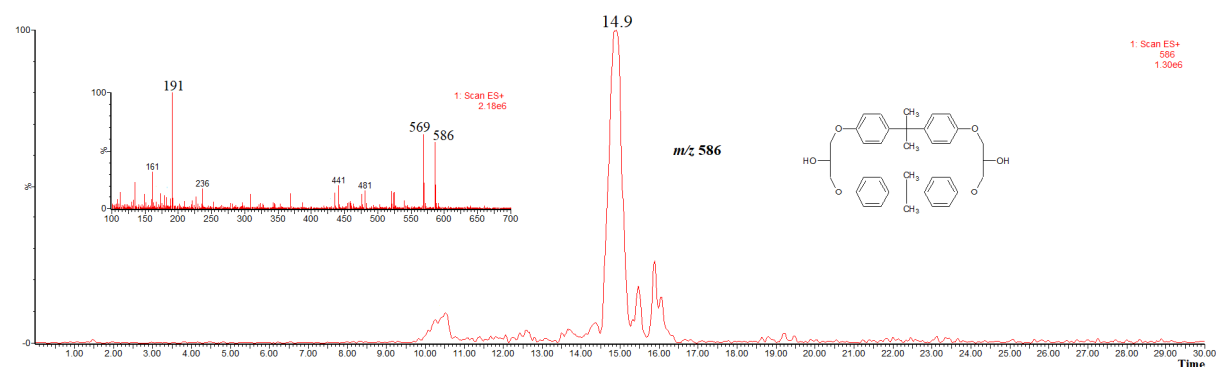


Figure S3. HPLC/ESI-MS detection of cyclo-di-BADGE (M=568). Beside the ions [M+H]⁺ and [M+NH₄]⁺ (*m/z* 569 and 586, respectively) the abundant product ion at *m/z* 191 (characteristic for BADGE related compounds, [16]), has been observed.