

Supplementary Material

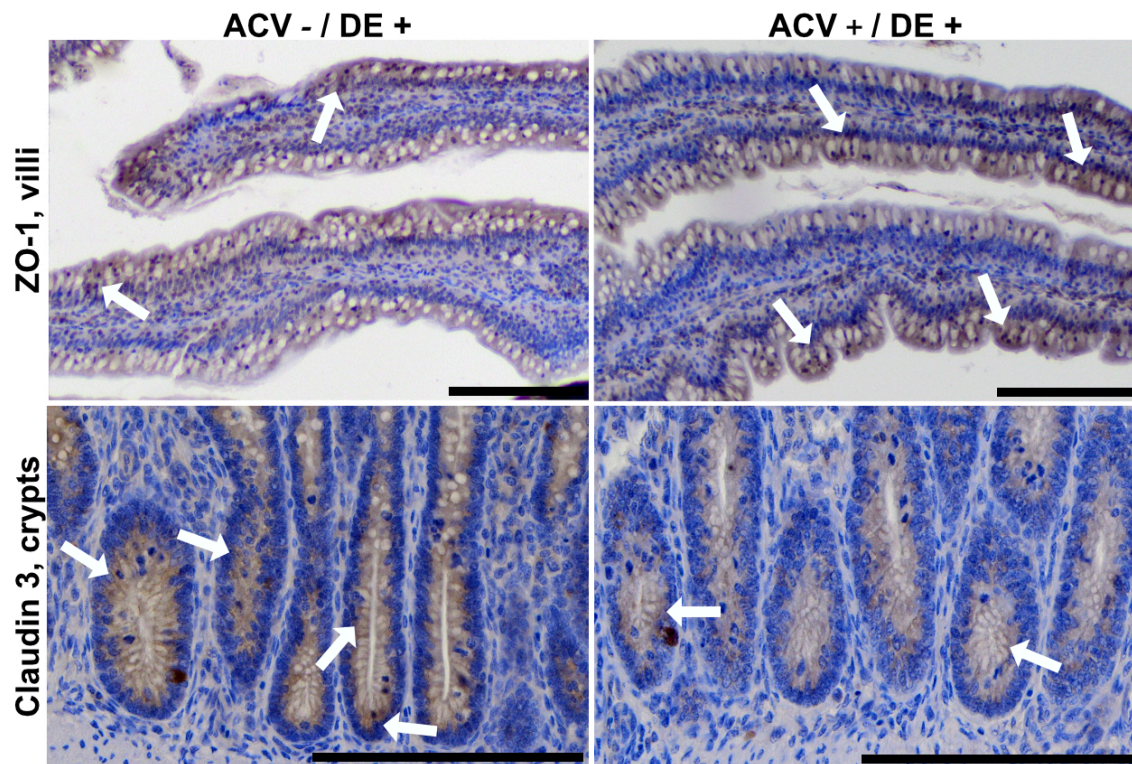


Figure S1. Representative images of the immunohistochemical reactions of zonula occludens-1 and claudin -3 carried out on formaldehyde-fixed sections from the jejunum of broiler chickens sampled at 5 d post challenging with *Eimeria* spp.; ACV—vaccination at 1 d of age with anticoccidial vaccine and DE—dietary supplementation with *Taraxacum officinale* (dandelion) extract. Examples of the reaction are marked with white arrows. All the scale bars represent 100 μ m.