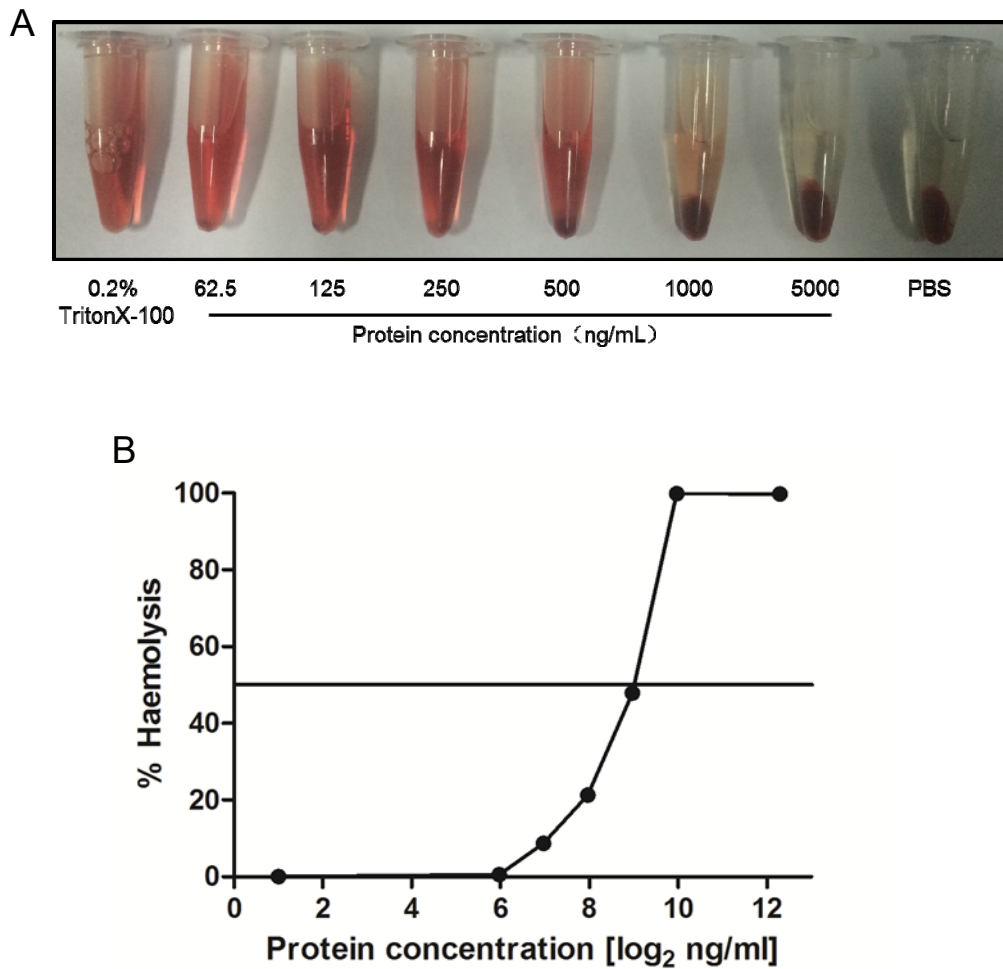
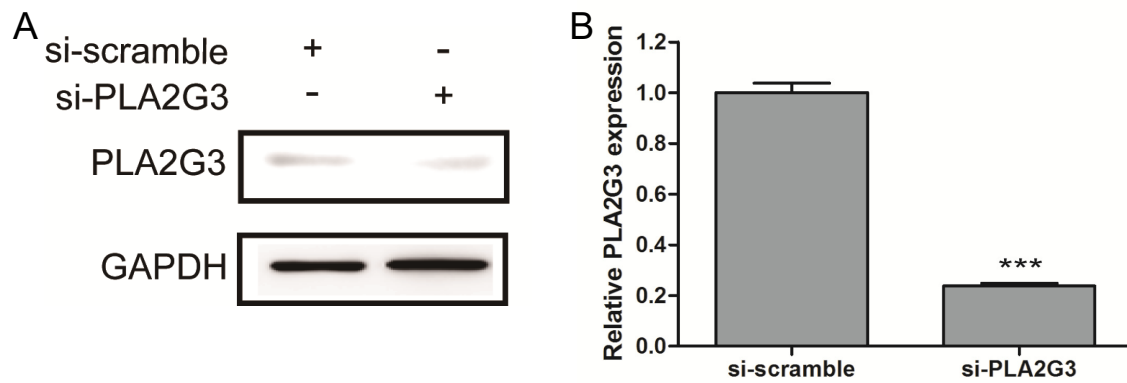


**Supplemental Table S1. Primers Used in Real-time PCR analysis and siRNAs.**

Gene	forward primer (5'- 3')	reverse primer (5'- 3')
TNF- $\alpha$	TATGAGCCCATCTATCTG	AATGATCCCAAAGTAGAC
PLA2G1	CTATTCATACTCGTGCTCTGG	GGTCTTTCAACAAGGTGCT
PLA2G2	CTCCCTACCTAACCAAGT	ACGGAGTTGAGGTGGAGG
PLA2G3	GGACCACATCTCCTGCTGTT	CCCTAACTTCCCACCTGCTAC
PLA2G5	GATTATCATCACCACCACC	TACCCATACACCAGATTTAGAG
GAPDH	GTGGGGCGCCCCAGGCACCA	CGGTTGGCCTTGGGGTTCAGGGGGG
Si-PLA2G3	GACACCAGCUCCAGGAUAATT	UUAUCCUGGAGCUGGUGUCTT



**Supplemental Figure S1.** Determination of sub-haemolytic concentration of nSLY protein. **A**, nSLY was added to 2% erythrocytes in eppendorf tube as indicated concentration and incubated at 37 °C for 60 minutes. And then the haemolysis was determined after centrifugation. **B**, Measuring the absorbance of supernatant at 540 nm. Results are showed as % haemolysis compared to erythrocytes lysed with 0.2% TritonX-100. The horizontal line indicates 50% haemolysis.



**Supplemental Figure S2.** Efficient attenuation of PLA2G3 expression in si-PLA2G3-transduced hCMEC/D3 cells. **A**, Western blot analysis of PLA2G3 in hCMEC/D3 cells after transfection with PLA2G3-targeting siRNA (si-PLA2G3) or non-targeting siRNA (si-scramble). **B**, QRT-PCR analysis of hCMEC/D3 cells transfection with si-PLA2G3 or si-scramble after nSLY stimulated 4 hours. Error bars, SEM; Unpaired Student t tests are used for statistical analysis. \*\*\* $P < 0.001$ .