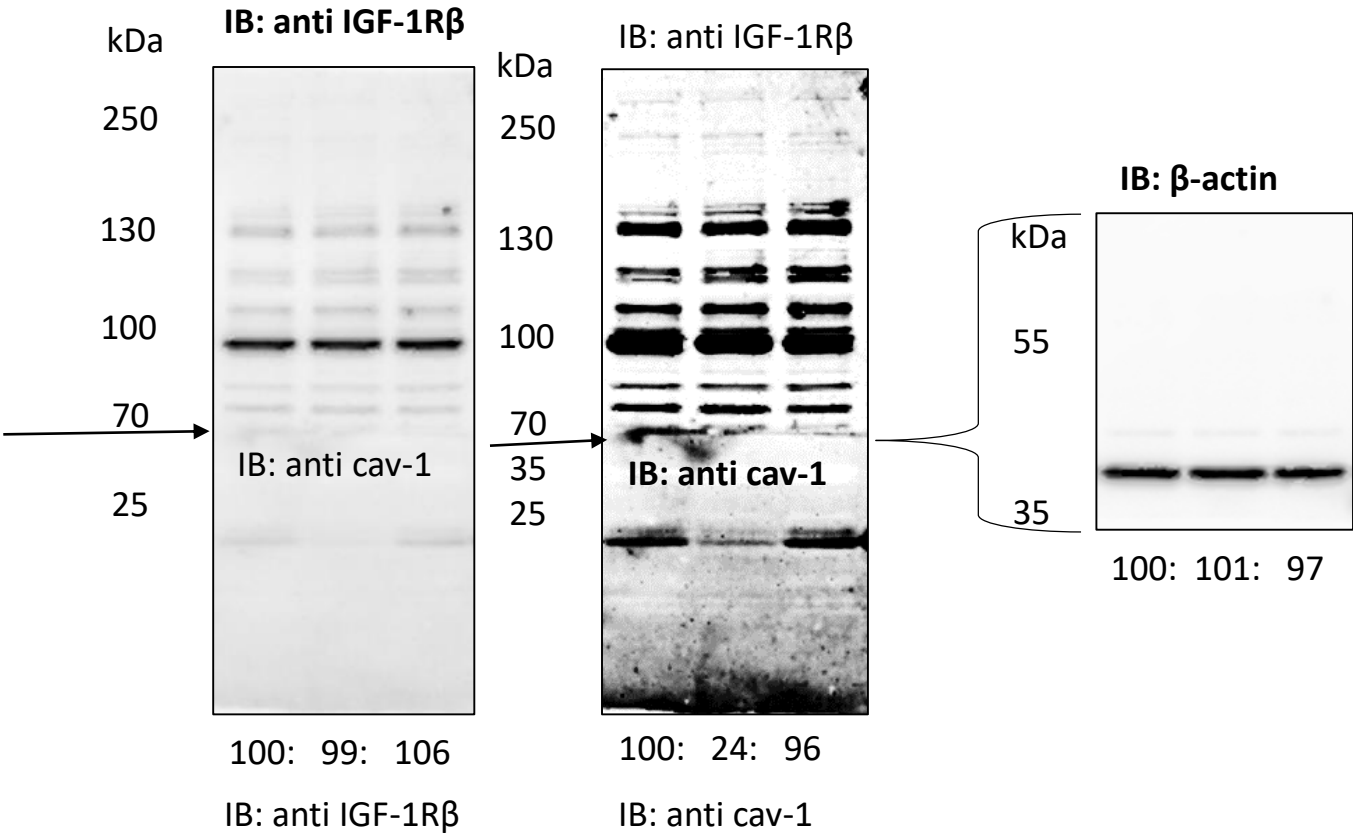


Figure S1a and S1b

Membrane has been cut at the level of 70 kDa and 35 kDa: upper fragment has been immunoblotted with anti-IGF1R $\beta$ , the middle fragment with  $\beta$ -actin, and the bottom with anti-Cav-1 antibodies. Images of IGF1R $\beta$  and cav-1 have been captured from the same membrane setting, but with different exposure time.



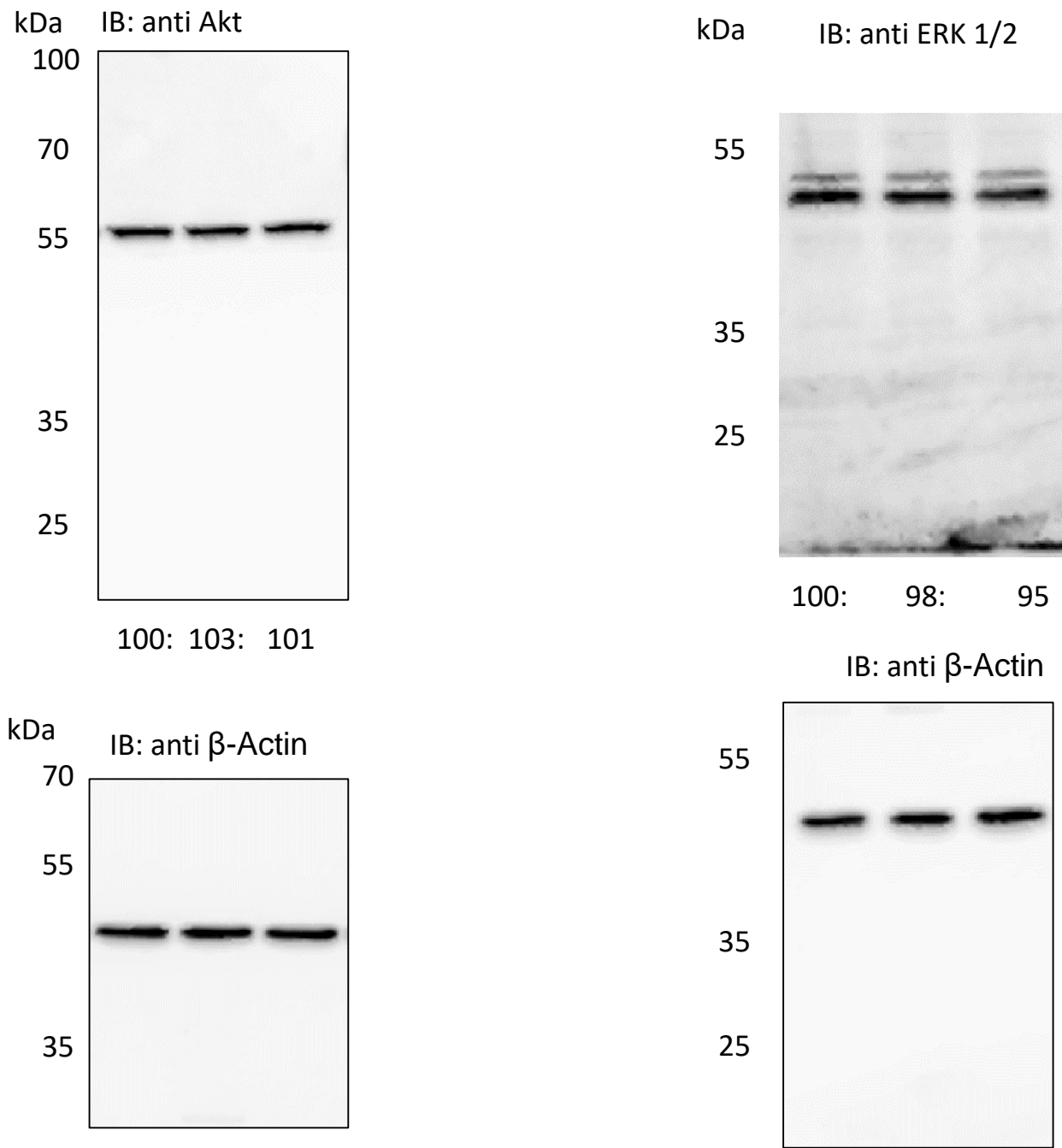
Densitometric analysis/intensity ratio

	IGF1R/ACT	CAV-1/ACT
CTR	0,59133076	0,7260386
Si-Cav-1	0,58524315	0,1754099
Si-CTR	0,62836111	0,6949462

# Figure S1c and S1d

IB: anti AKT: membrane has been cut at the level of 100 kDa. The upper fragment has not been used. Membrane was strepped and reprobed with anti  $\beta$ -Actin.

IB: anti ERK1/2: membrane has been cut between 70 kDa and 55 KDa. The upper fragment has not been used. Membrane was strepped and reprobed with anti  $\beta$ -Actin.



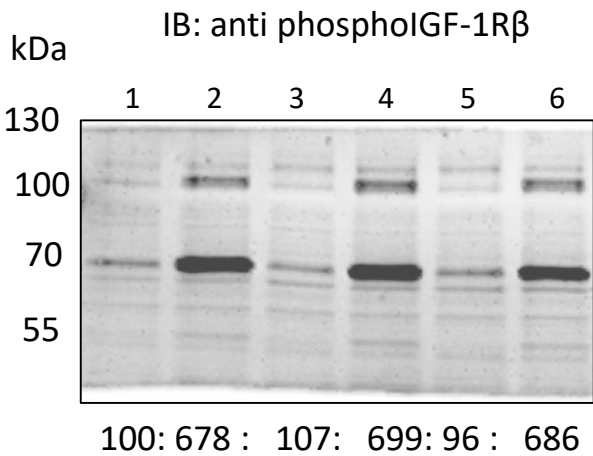
Densitometric analysis/intensity ratio

	AKT/ACT
CTR	0,957371
Si-Cav-1	0,986696
Si-CTR	0,966248

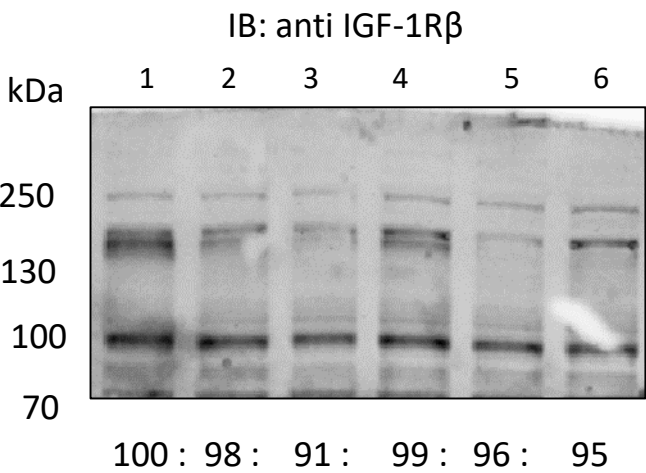
	ERK/ACT
CTR	0,984099
Si-Cav-1	0,962864
Si-CTR	0,937497

Figure S2a

IB: anti phosphoIGF-1R $\beta$ : membrane has been cut at the level of 130 kDa. The membrane has been stripped, however the band at 70 kDa was already visible. The upper and the lower fragments have not been used.



IB: anti IGF-1R $\beta$ : membrane has been cut at the level of 70 kDa. The lower fragments for actin detection.



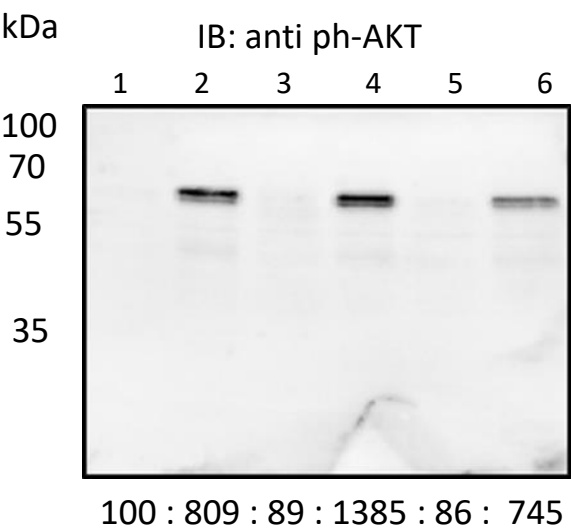
Densitometric analysis/intensity ratio

	phIGF1R/ACT
1	0,373098
2	2,52871
3	0,400523
4	2,609419
5	0,359456
6	2,558247

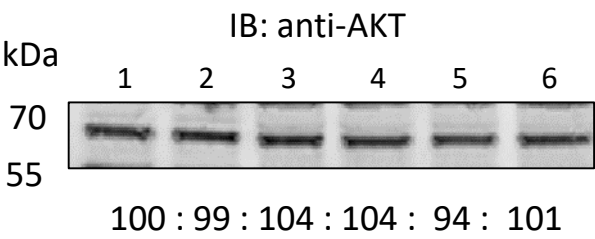
	IGF1R/ACT
1	0,774617
2	0,759392
3	0,704847
4	0,766441
5	0,740758
6	0,73419

Figure S2b

IB: anti ph-AKT: membrane has been cut at the level of 100 kDa. The upper fragment has not been used.



IB: anti AKT: membrane has been cut between 70 kDa and 55 KDa. The other fragment has been used for other experiments.



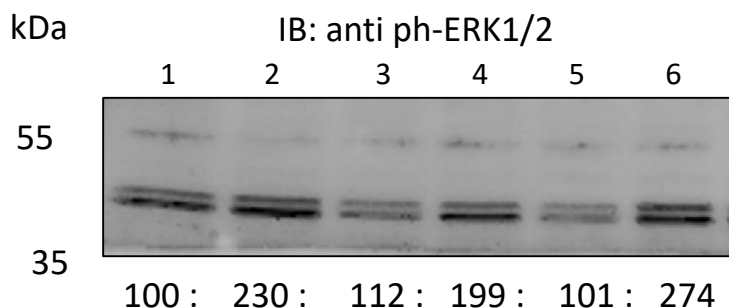
Densitometric analysis/intensity ratio

	phAKT/ACT
1	0,043937
2	0,355659
3	0,039284
4	0,608671
5	0,038006
6	0,327253

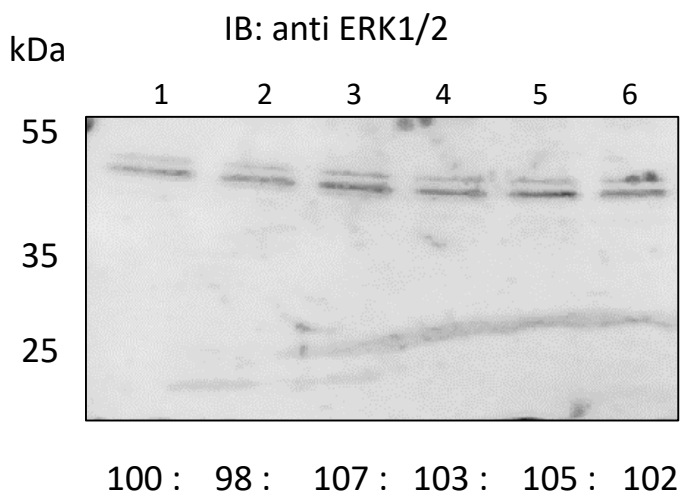
	AKT/ACT
1	1,107822
2	1,092836
3	1,149699
4	1,147532
5	1,039049
6	1,116509

# Figure S2c

IB: anti ph-ERK1/2: membrane has been cut at the between 70 kDa and 55 kDa, and at the level of 35 kDa. The other fragments have been used for another experiment



IB: anti ph-ERK1/2: membrane has been cut at the level of 55 kDa. The upper fragments have been used for another experiment.



Densitometric analysis/intensity ratio

	phERK/ACT
1	0,866257
2	1,993088
3	0,970045
4	1,725321
5	0,874852
6	2,375852

	ERK/ACT
1	0,40533
2	0,397458
3	0,435652
4	0,416379
5	0,424357
6	0,414359