

Article

Calcitriol Suppresses Warburg Effect and Cell Growth in Human Colorectal Cancer Cells

Chun-Yin Huang ¹, Yu-Ting Weng ^{1,2,†}, Po-Chen Li ^{1,†}, Nien-Tsu Hsieh ¹, Chun-I Li ³, Hsiao-Sheng Liu ^{3,4} and Ming-Fen Lee ^{1,2,*}

¹ Department of Nutrition, China Medical University, Taichung 406040, Taiwan; chuang@mail.cmu.edu.tw (C.-Y.H.); u106076201@cmu.edu.tw (Y.-T.W.); u107076003@cmu.edu.tw (P.-C.L.); u102059651@cmu.edu.tw (N.-T.H.); leemf@cmu.edu.tw (M.-F.L.)

² Department of Nutrition and Health Sciences, Chang Jung Christian University, Tainan 711301, Taiwan

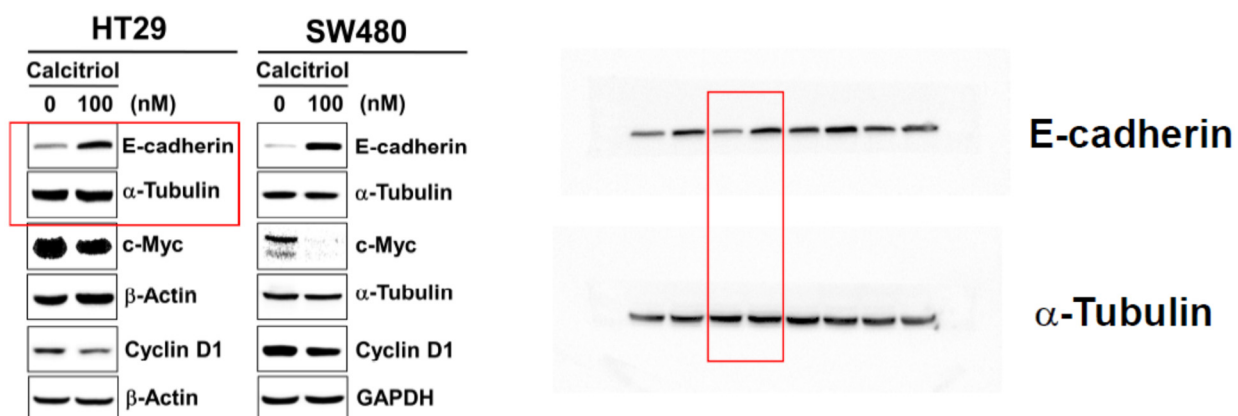
³ Department of Microbiology and Immunology, National Cheng Kung University, Tainan 70101, Taiwan; cili@glyconex.com.tw (C.-I.L.); hslu713@kmu.edu.tw (H.-S.L.)

⁴ Center for Cancer Research, Graduate Institute of Clinical Medicine, College of Medicine, Kaohsiung Medical University, Kaohsiung 80708, Taiwan;

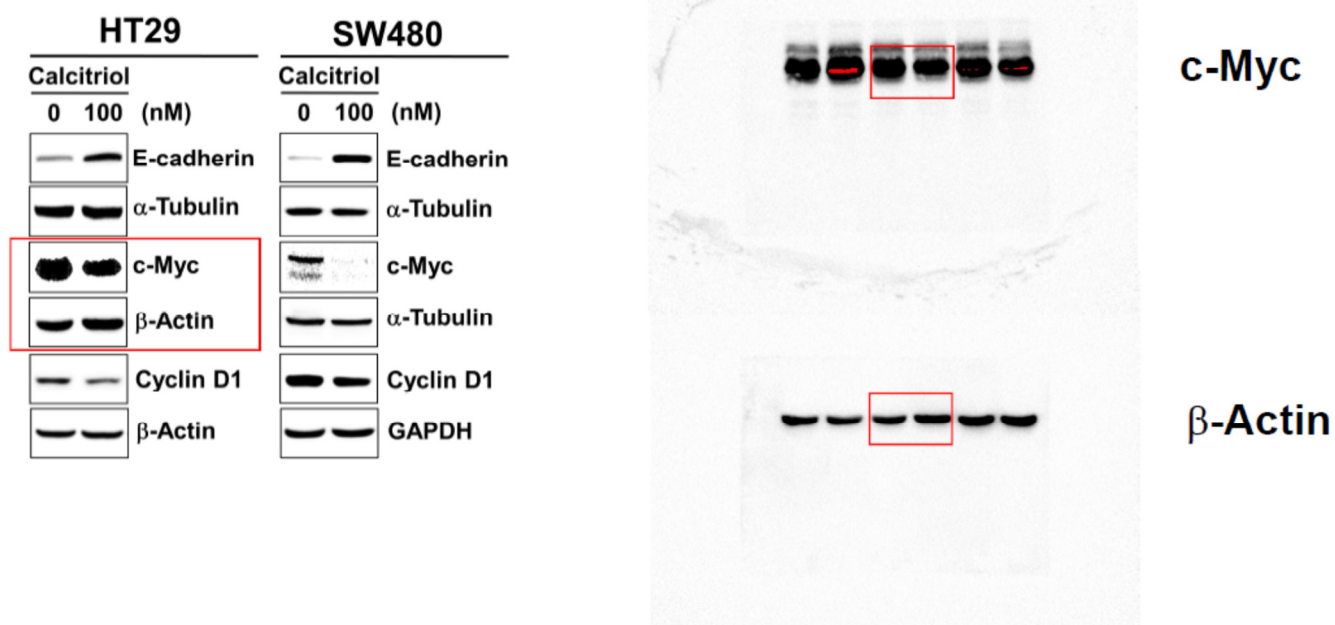
* Correspondence: leemf@cmu.edu.tw; Tel.: +886-4-2205-3366 (ext. 7510)

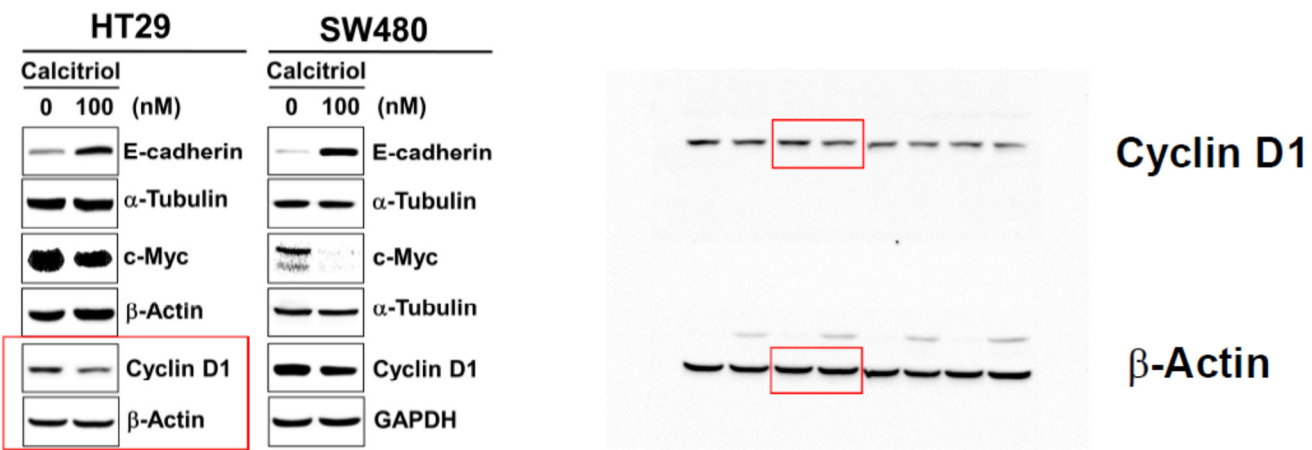
† These authors contributed equally.

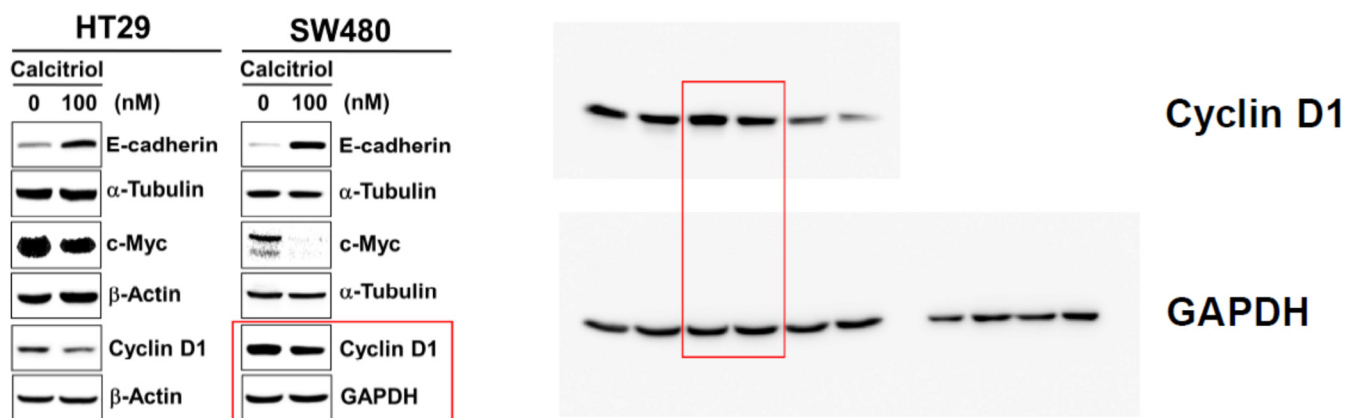
(A)



(B)

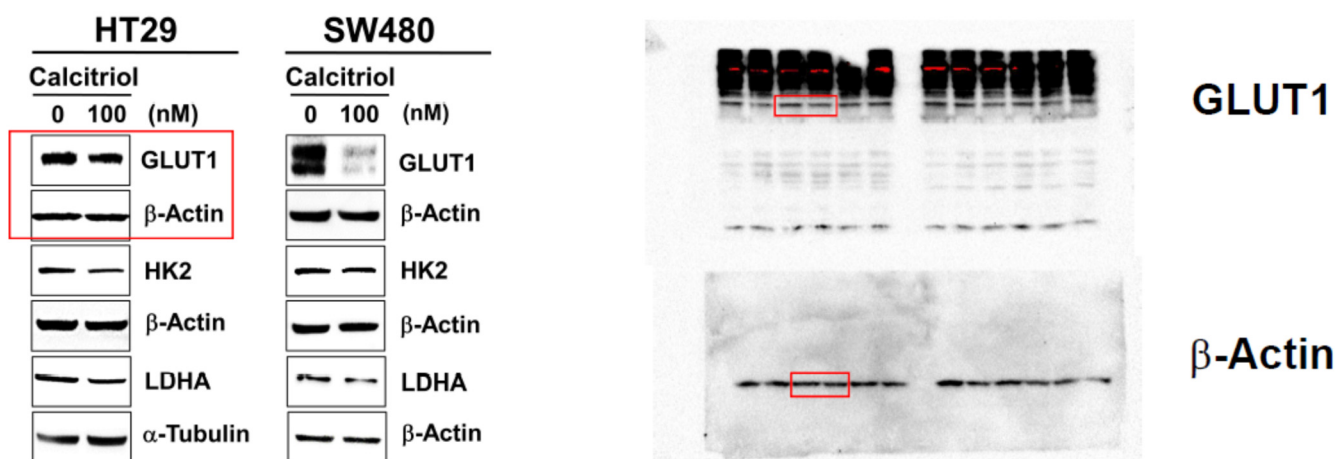




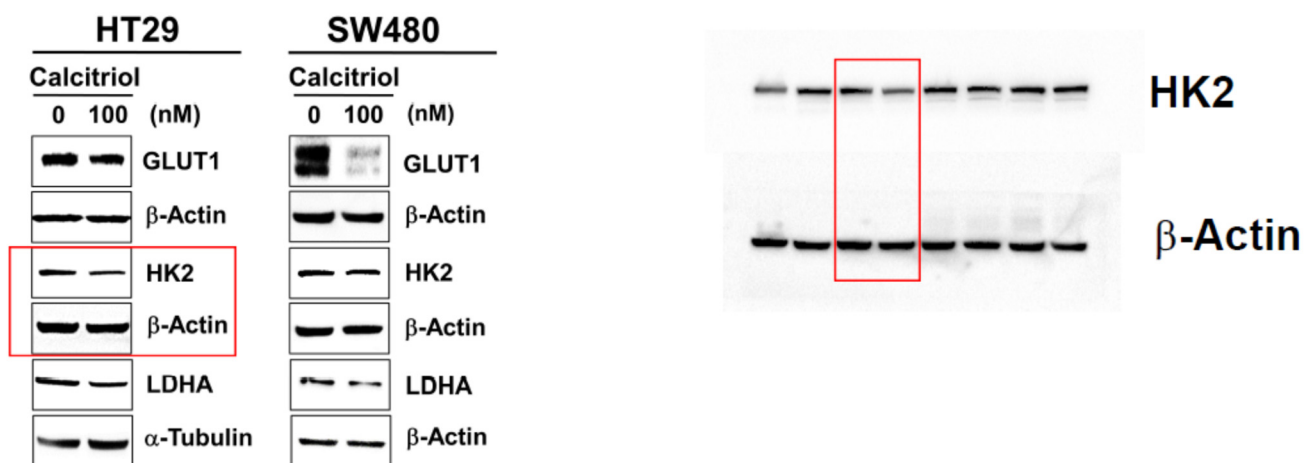


(F)

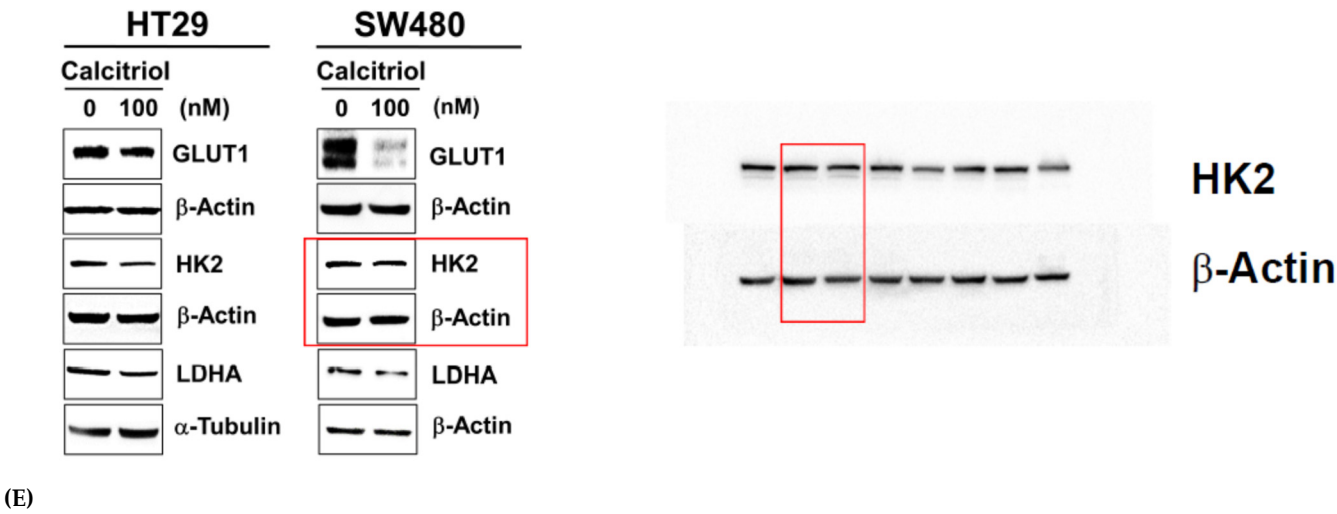
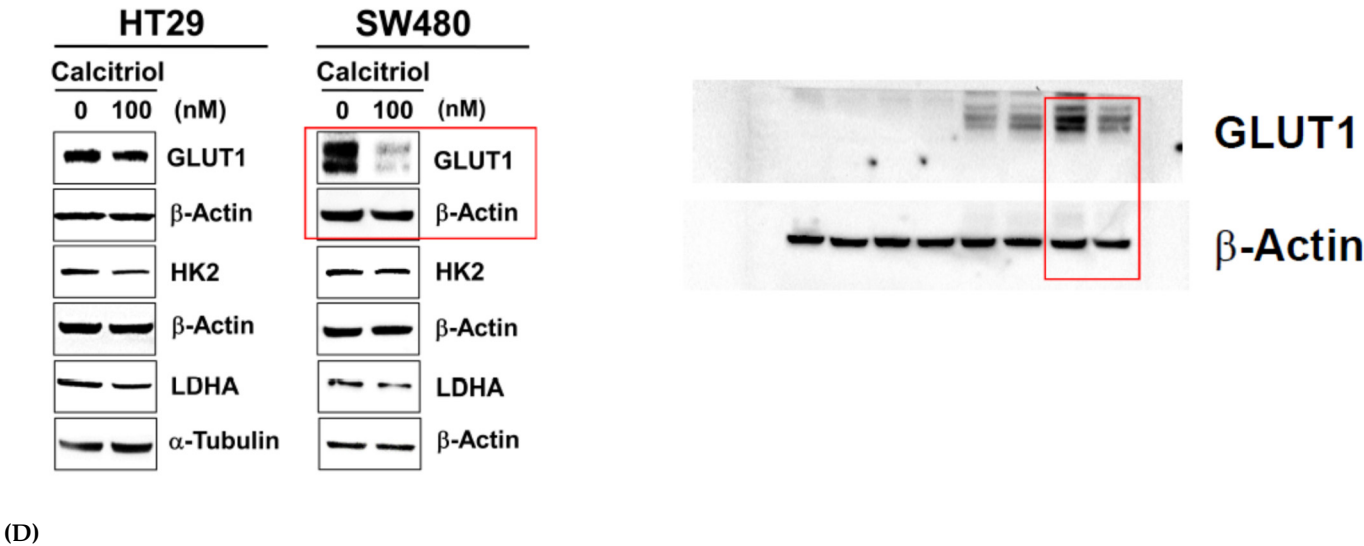
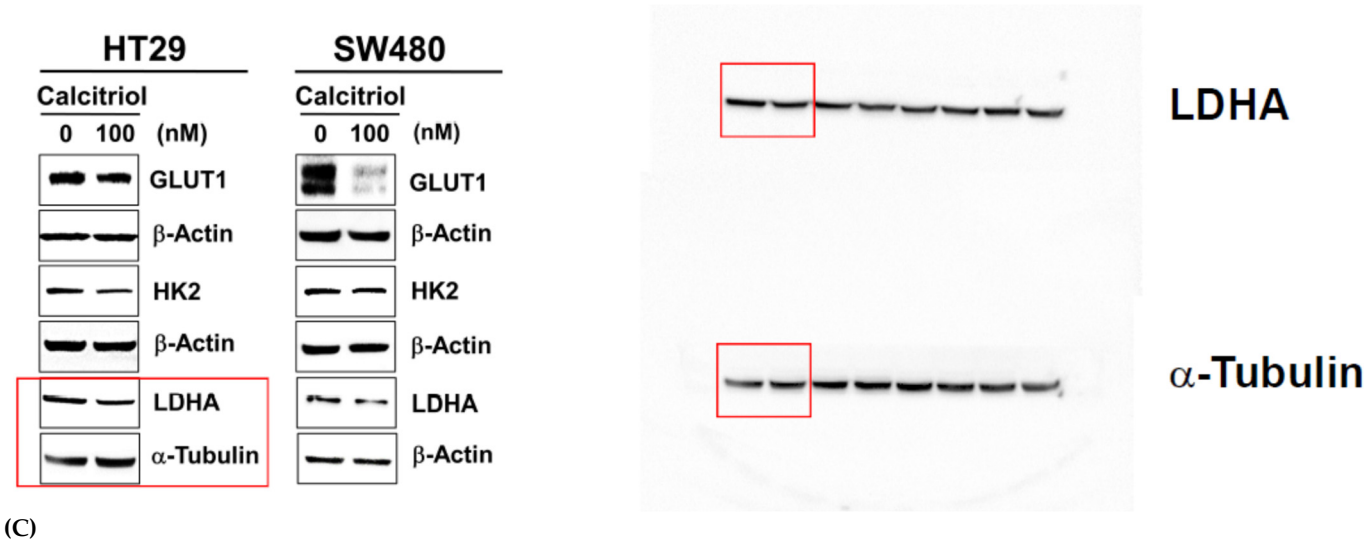
Figure S1. The original western blotting figures for Figure 1B Western blotting (A) HT29: E-cadherin, α -Tubulin. (B) HT29: c-Myc, β -Actin. (C) HT29: Cyclin D1, β -Actin. (D) SW480: E-cadherin, α -Tubulin. (E) SW480: c-Myc, β -Actin. (F) SW480: Cyclin D1, GAPDH.

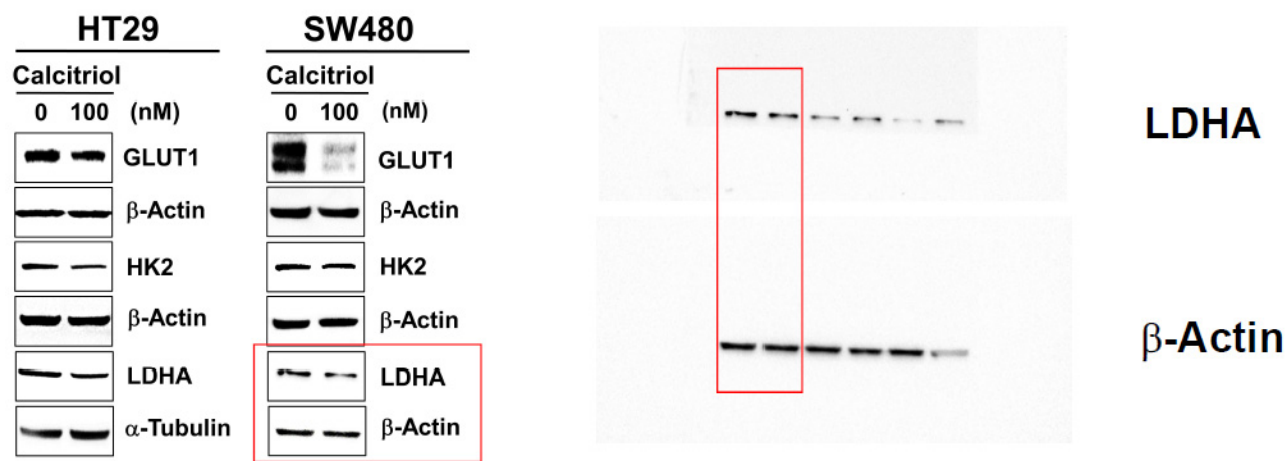


(A)



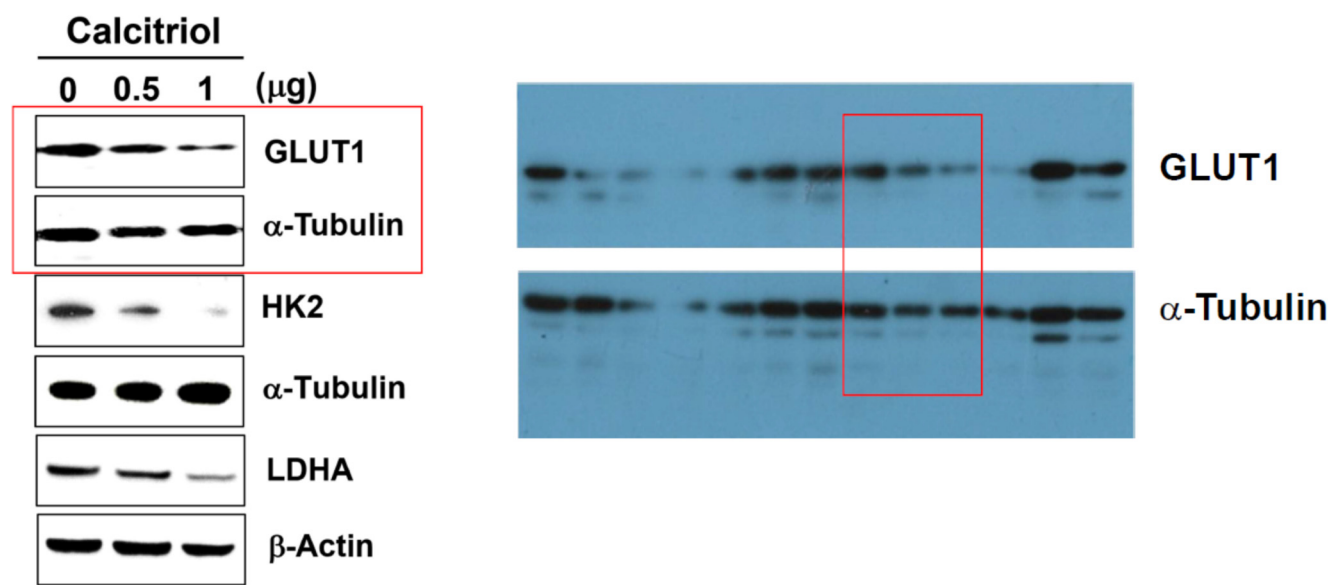
(B)



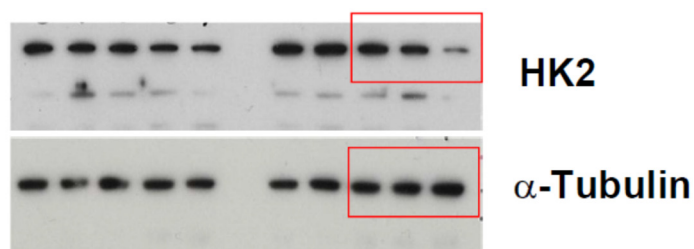
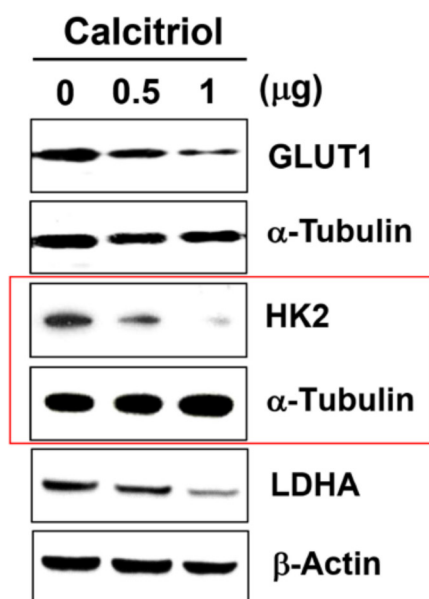


(F)

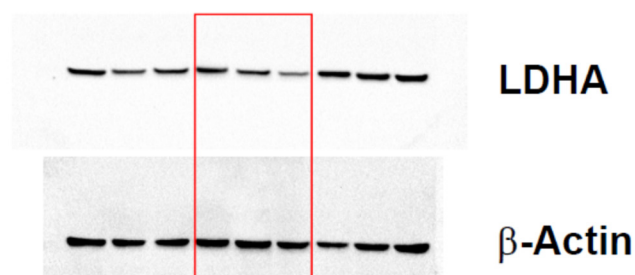
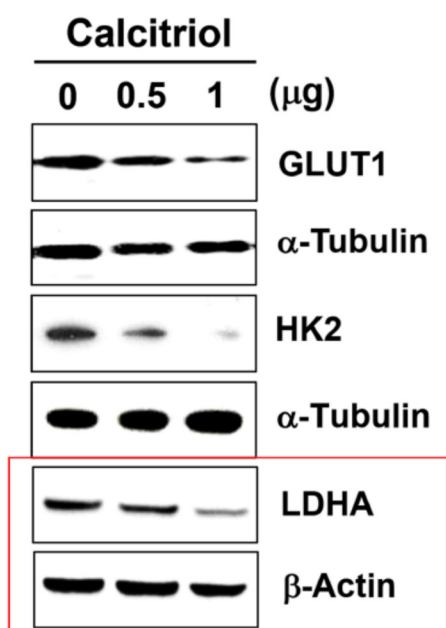
Figure S2. The original western blotting figures for Figure 2A Western blotting (A) HT29: GLUT1, β-Actin. (B) HT29: HK2, β-Actin. (C) HT29: LDHA, α-Tubulin. (D) SW480: GLUT1, β-Actin. (E) SW480: HK2, β-Actin. (F) SW480: LDHA, β-Actin.



(A)



(B)



(C)

Figure S3. The original western blotting figures for Figure 3C Western blotting HT29 xenograft: (A) GLUT1, α -Tubulin. (B) HK2, α -Tubulin. (C) LDHA, β -Actin.