

Table S1. Expansion/reduction in the intensity index from 2004 to 2013.

1. Type	2. 1 km		3. 2 km		4. 3 km		5. 4 km		6. 5 km		7. 6 km		8. 7 km	
	2004– 2013	2013– 2018	2004– 2013	2013– 2018	2004– 2013	2013– 2018	2004– 2013	2013– 2018	2004– 2013	2013– 2018	2004– 2013	2013– 2018	2004– 2013	2013– 2018
Forest	(0.0886)	(0.1520)	(0.0826)	(0.1484)	(0.0779)	(0.1421)	(0.0755)	(0.1367)	(0.0742)	(0.1354)	(0.0732)	(0.1331)	(0.0736)	(0.1345)
Plantation	0.1134	0.2694	0.1083	0.2778	0.1051	0.2756	0.1027	0.2750	0.1000	0.2743	0.1013	0.2761	0.1043	0.2791
Constructio n land	0.0153	0.0018	0.0146	(0.0001)	0.0148	0.0002	0.0151	0.0004	0.0150	0.0000	0.0152	(0.0012)	0.0152	(0.0016)
Agricultural land	(0.0428)	(0.1378)	(0.0429)	(0.1472)	(0.0453)	(0.1543)	(0.0455)	(0.1605)	(0.0441)	(0.1611)	(0.0465)	(0.1641)	(0.0489)	(0.1654)
Others	0.0028	0.0187	0.0027	0.0179	0.0034	0.0207	0.0032	0.0218	0.0033	0.0221	0.0031	0.0224	0.0030	0.0225
Type	8 km		9 km		10 km		15 km		20 km		25 km		30 km	
	2004– 2013	2013– 2018	2004– 2013	2013– 2018	2004– 2013	2013– 2018	2004– 2013	2013– 2018	2004– 2013	2013– 2018	2004– 2013	2013– 2018	2004– 2013	2013– 2018
Forest	(0.0748)	(0.1354)	(0.0760)	(0.1358)	(0.0778)	(0.1362)	(0.0812)	(0.1291)	(0.0792)	(0.0684)	(0.0787)	(0.1220)	(0.0813)	(0.1271)
Plantation	0.1075	0.2818	0.1093	0.2851	0.1108	0.2845	0.1053	0.2670	0.0992	0.1353	0.0985	0.2311	0.1009	0.2325
Constructio n land	0.0149	(0.0011)	0.0147	(0.0016)	0.0144	(0.0012)	0.0134	(0.0001)	0.0126	0.0003	0.0123	0.0011	0.0125	0.0011
Agricultural land	(0.0512)	(0.1690)	(0.0520)	(0.1723)	(0.0514)	(0.1724)	(0.0434)	(0.1672)	(0.0418)	(0.0864)	(0.0447)	(0.1504)	(0.0465)	(0.1503)
Others	0.0036	0.0238	0.0040	0.0246	0.0041	0.0253	0.0061	0.0295	0.0097	0.0194	0.0130	0.0404	0.0150	0.0441

(The numbers in red signify negative values and those in black indicate positive values).



Figure S1. Major land use types and changes in the 30 km buffer areas of the Kunming–Bangkok Highway in 2004–2018.

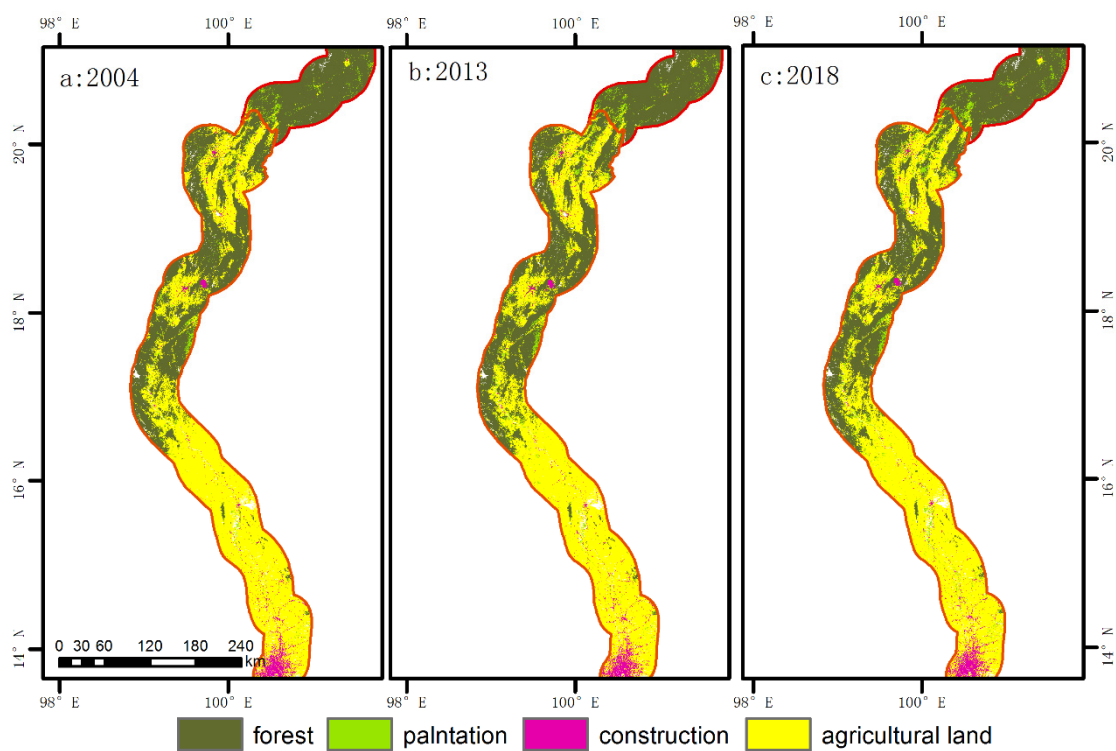


Figure S2. Major land use types in the 30 km buffer areas of the Kunming–Bangkok Highway in 2004, 2013, and 2018.