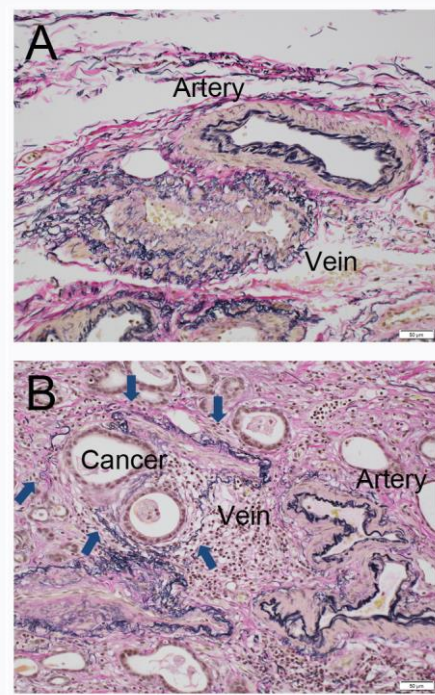


Figure S1. Representative histopathology of venous invasion.



(A) Normal image of the artery and vein which run side by side. Elastic plates are stained black by Elastica van Gieson staining. (B) Venous invasion by cancer cells. Vein structure is destroyed by cancer invasion, but the elastic plate (blue arrows) adjacent to the artery suggests adventitia of the vein.