

Supplementary Online Content

Chang B-S, Peng T-C, Wu Y-F, Hsieh Y-C and Huang C-H. Prognostic Values of Inflammatory Indexes and Clinical Factors in Patients with Epidermal Growth Factor Receptor Mutations in Lung Adenocarcinoma and Treated with Tyrosine Kinase Inhibitors. *Journal of Personalized Medicine*.

Table S1. Time-dependent receiver operating characteristic curve analysis for progression-free and overall survival.

Figure S1. Time-dependent receiver operating characteristic curves for determining the optimal cutoff value of preoperative systemic inflammatory markers for progression-free survival included lymphocyte-to-monocyte ratio (**A**), neutrophil-to-lymphocyte ratio (**B**), platelet-to-lymphocyte ratio (**C**), and systemic immune-inflammation index (**D**); overall survival included lymphocyte-to-monocyte ratio (**A**), neutrophil-to-lymphocyte ratio (**B**), platelet-to-lymphocyte ratio (**C**), and systemic immune-inflammation index (**D**).

Figure S2. Kaplan–Meier estimates of survival outcomes. Prediction of progression-free survival according to age (**A**), stage (**B**), EGFR-mutation type of deletion 19 vs. L858R (**C**), deletion 19 vs. others (**D**), and neutrophil-to-lymphocyte ratio (**E**). Prediction of overall survival according to age (**F**), EGFR-mutation type of deletion 19 vs. others (**G**), and lymphocyte-to-monocyte ratio (**H**).

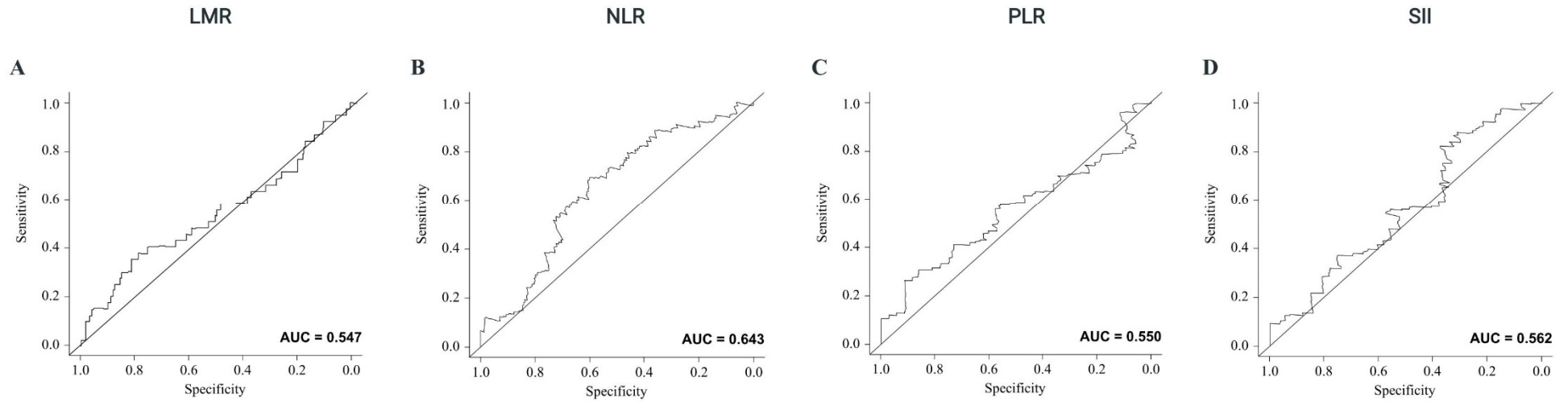
This supplementary material has been provided by the authors to give readers additional information about their work.

Table S1. Time-dependent receiver operating characteristic curve analysis for progression-free and overall survival.

Parameter	Progression-Free Survival				Overall Survival			
	LMR	NLR	PLR	SII	LMR	NLR	PLR	SII
AUC	0.547	0.643	0.550	0.562	0.873	0.579	0.793	0.617
Optimal sensitivity (%)	0.271	0.694	0.261	0.821	0.702	0.824	0.641	0.758
Optimal specificity (%)	0.816	0.599	0.913	0.374	0.696	0.361	0.844	0.496
Cutoff value at maximizes the sum of sensitivity and specificity	2.1	3.0	170.2	567.7	2.9	3.2	190.4	753.8

AUC: area under curve; LMR: lymphocyte-to-monocyte ratio; NLR: neutrophil-to-lymphocyte ratio; PLR: platelet-to-lymphocyte ratio; SII: systemic immune-inflammation index.

Progression-Free Survival



Overall Survival

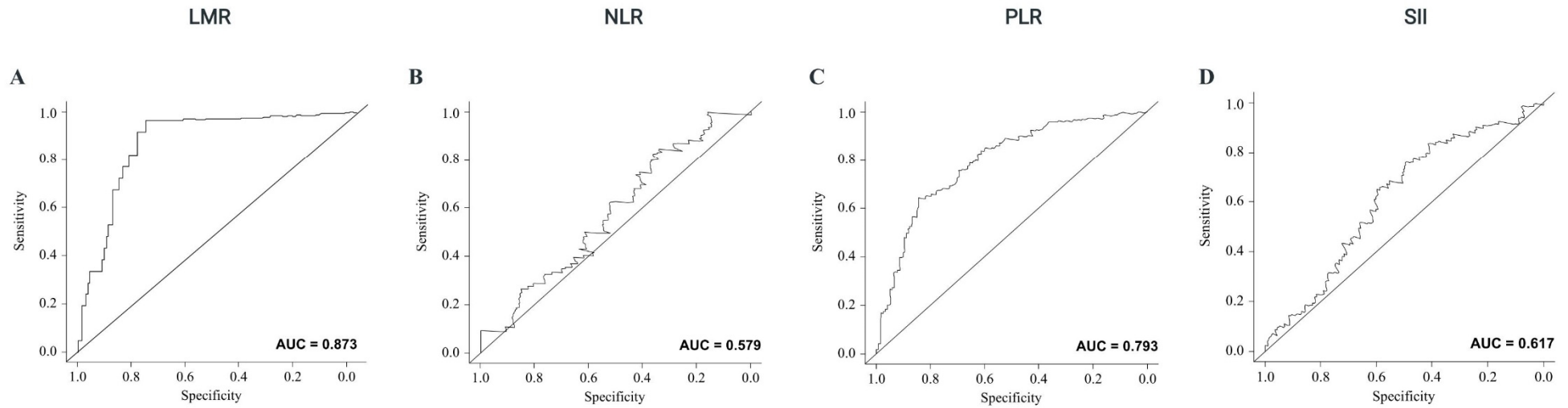


Figure S1. Time-dependent receiver operating characteristic curves for determining the optimal cutoff value of preoperative systemic inflammatory markers for progression-free survival included lymphocyte-to-monocyte ratio (A), neutrophil-to-lymphocyte ratio (B), platelet-to-lymphocyte ratio (C), and systemic immune-inflammation index (D); overall survival included lymphocyte-to-monocyte ratio (A), neutrophil-to-lymphocyte ratio (B), platelet-to-lymphocyte ratio (C), and systemic immune-inflammation index (D).

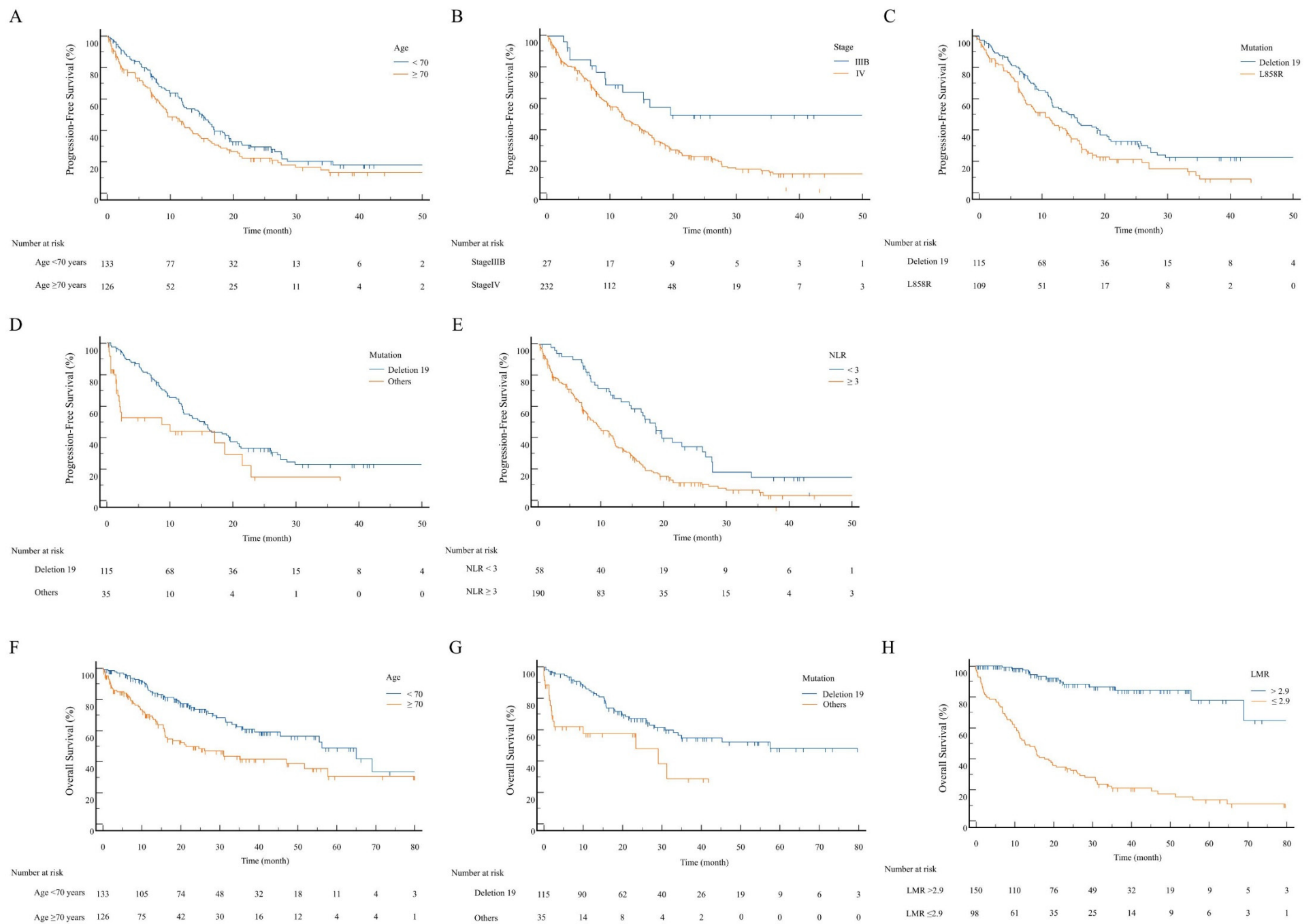


Figure S2. Kaplan–Meier estimates of survival outcomes. Prediction of progression-free survival according to age (A), stage (B), EGFR-mutation type of deletion 19 vs. L858R (C), deletion 19 vs. others (D), and neutrophil-to-lymphocyte ratio (E). Prediction of overall survival according to age (F), EGFR-mutation type of deletion 19 vs. others (G), and lymphocyte-to-monocyte ratio (H).