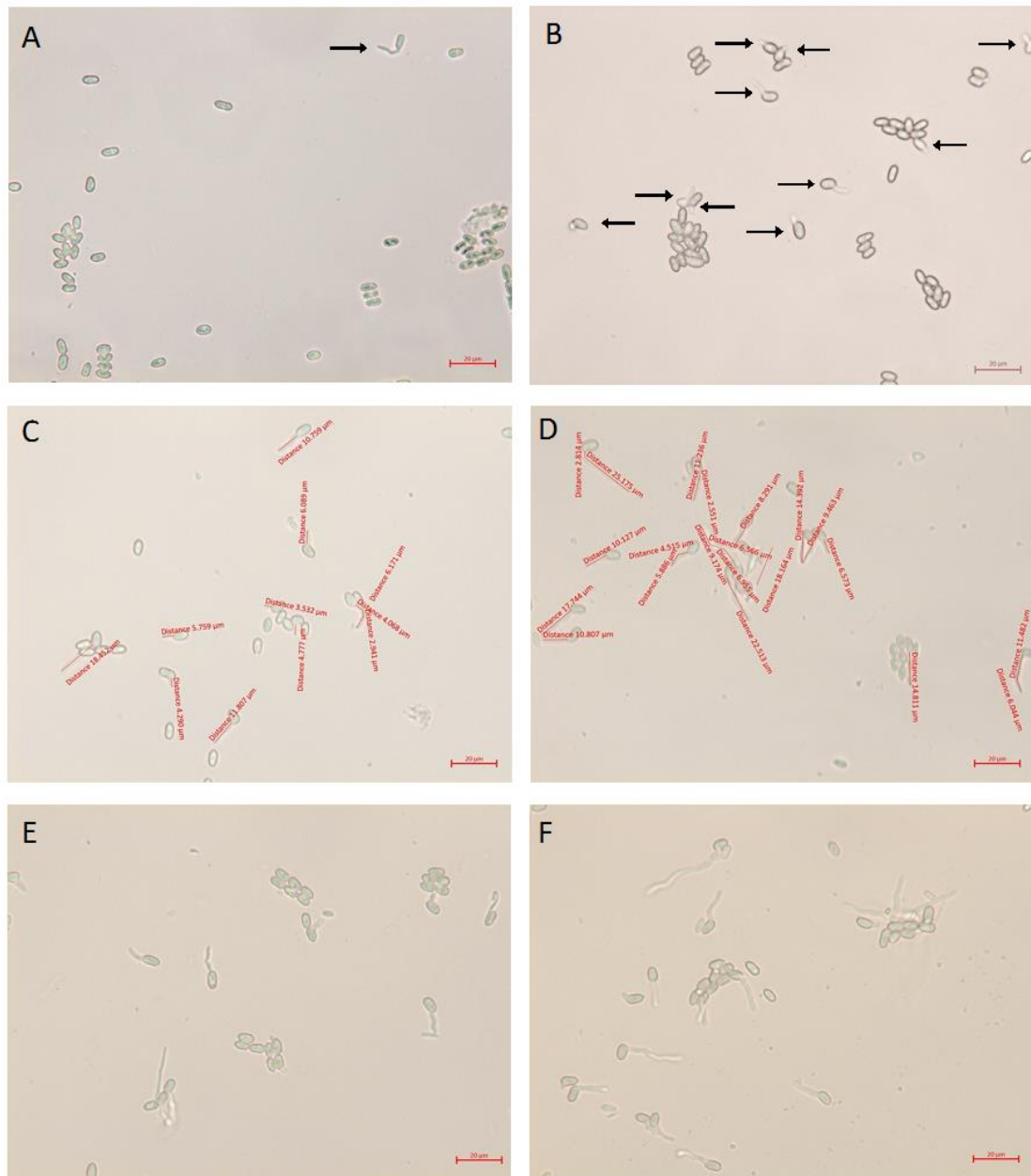
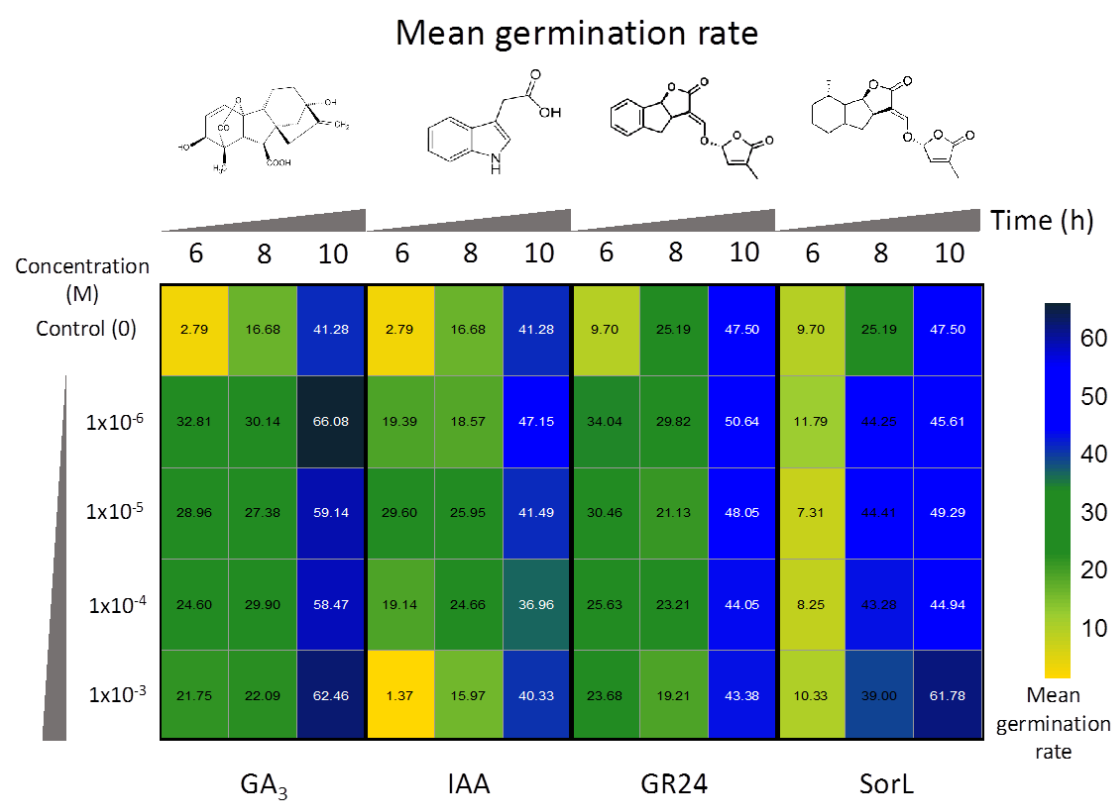


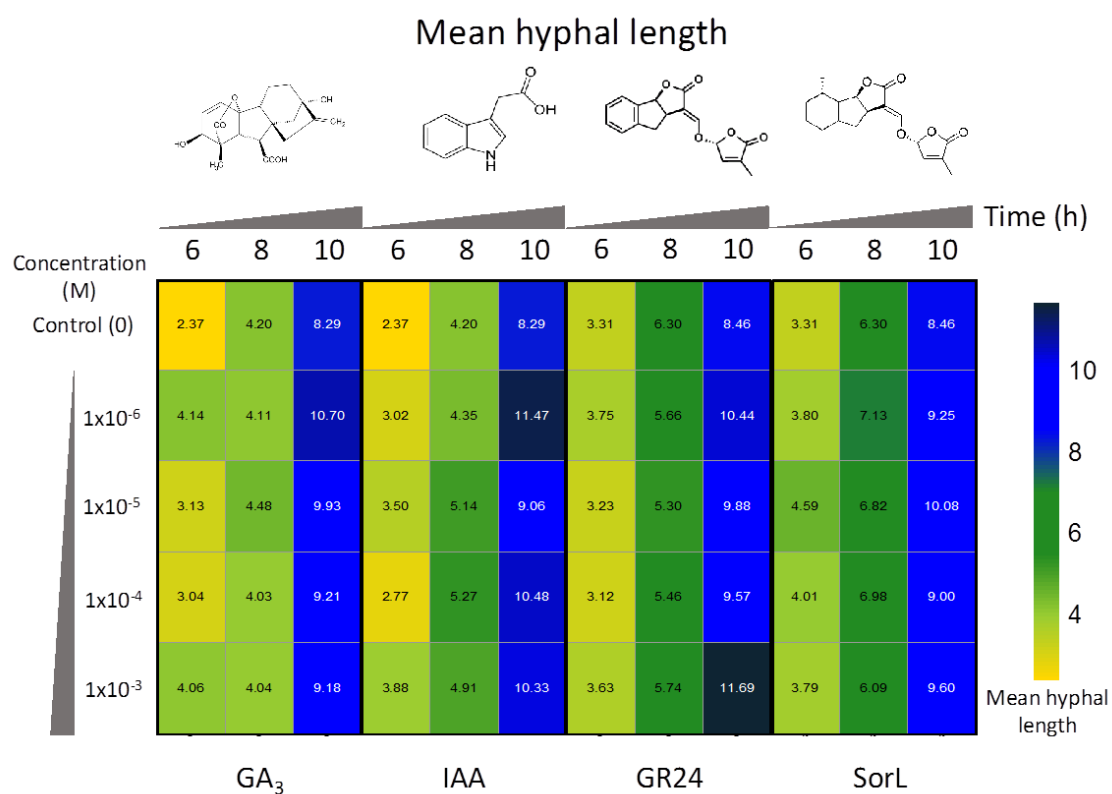
## Supplementary material



**Figure S1.** Brightfield microscopy image of germinated conidia. **A and B:**) Image of the conidia from the control treatment at 6 h of growth and the treatment with the phytohormone gibberellic acid GA<sub>3</sub> at a concentration of  $1 \times 10^{-6}$  M at 6 h of growth, respectively. The black arrows indicate the germinated conidia. **C and D:**) Image of the conidia of the control treatment at 10 h of growth and the treatment with the phytohormone strigolactone synthase rac-GR24 (GR24) at a concentration of  $1 \times 10^{-5}$  M at 10 h of growth. Red indicates the lengths of the hyphae obtained with the Zeiss Blue edition program. **E and F:**) Image of the conidia of the control treatment at 10 h of growth and the treatment with the phytohormone gibberellic acid (GA<sub>3</sub>) at a concentration of  $1 \times 10^{-5}$  M at 10 h of growth.



**Figure S2.** Heatmap of average germination rates. Phytohormone: GA<sub>3</sub>: gibberellic acid, IAA; 3-indole acetic acid, GR24; synthetic strigolactone rac-GR24, SorL; strigolactone (+/-)-sorgolactone. The number indicates the average percentage of germination of each treatment.



**Figure S3.** Heatmap of average hyphal length. Phytohormone: GA<sup>3</sup>: Gibberellic acid, IAA; 3-indole acetic acid, GR24; Strigolactone synthase rac-GR24, SorL; Strigolactone (+/-)-sorgolactone. The number indicates the average hyphal length of each treatment

**Table S1.** Mean germination rate and standard deviation.

Phytohormone concentration	GA3			IAA			GR24			SorL		
	6h	8h	10h	6h	8h	10h	6h	8h	10h	6h	8h	10h
Control (0 M)	2.793	16.68	41.28	2.793	16.68	41.28	9.695	25.19	47.5	9.695	25.19	47.5
SD Control	3.296	1.732	9.036	3.296	1.732	9.036	6.335	12.95	12.46	6.335	12.95	12.46
1x10 <sup>-6</sup> M	32.81*	30.14*	66.08*	19.39*	18.57	47.15	34.04*	29.82	50.64	11.79	44.25	45.61
SD 1x10 <sup>-6</sup> M	11.8	4.344	5.43	6.527	3.044	10.04	9.556	6.907	6.188	2.203	4.554	6.429
1x10 <sup>-5</sup> M	28.96*	27.38*	59.14*	29.6*	25.95*	41.49	30.46*	21.13	48.05	7.312	44.41*	49.29
SD 1x10 <sup>-5</sup> M	12.49	5.813	13.03	6.134	4.956	11.21	7.438	12.21	13.9	2.96	10.08	9.894
1x10 <sup>-4</sup> M	24.6*	29.9*	58.47*	19.14*	24.66	36.96	25.63*	23.21	44.05	8.252	43.28*	44.94
SD 1x10 <sup>-4</sup> M	12.81	9.721	12.53	14.58	6.665	11.25	7.471	4.898	5.977	4.974	7.335	8.544
1x10 <sup>-3</sup> M	21.75*	22.09	62.46*	1.373	15.97	40.33	23.68*	19.21	43.38	10.33	39*	61.78*
SD 1x10 <sup>-3</sup> M	14.06	4.643	8.478	0.3076	7.034	9.822	11.1	7.589	7.526	6.365	5.591	4.555

\* Values with significant statistical difference

**Table S2.** Mean hyphal length and standard deviation

Phytohormone concentration	GA3			IAA			GR24			SorL		
	6h	8h	10h	6h	8h	10h	6h	8h	10h	6h	8h	10h
Control (0 M)	2.367	4.197	8.293	2.367	4.197	8.293	3.311	6.302	8.459	3.311	6.302	8.459
SD Control	1.245	1.934	4.647	1.245	1.934	4.647	1.551	3.081	4.516	1.551	3.081	4.516
1x10 <sup>-6</sup> M	4.143*	4.113	10.7*	3.022	4.348	11.47*	3.746*	5.661	10.44*	3.801	7.131	9.254
SD 1x10 <sup>-6</sup> M	1.984	2	4.952	1.334	1.87	6.183	1.746	2.788	6.193	1.544	3.836	5.259
1x10 <sup>-5</sup> M	4.058*	4.04	9.18*	3.883*	4.912	10.33*	3.626	5.744	11.69*	3.792	6.087	9.604*
SD 1x10 <sup>-5</sup> M	1.97	1.924	4.488	1.842	2.547	6.04	1.63	2.956	6.604	1.844	3.2	4.89
1x10 <sup>-4</sup> M	3.037*	4.029	9.214*	2.769	5.272*	10.48*	3.123	5.461	9.57	4.011	6.977	9.002
SD 1x10 <sup>-4</sup> M	1.367	2.07	4.748	1.152	2.473	5.93	1.242	2.755	5.351	2.153	3.716	4.642
1x10 <sup>-3</sup> M	3.126	4.477	9.928*	3.503*	5.137*	9.063	3.227	5.305	9.88*	4.589*	6.817	10.08*
SD 1x10 <sup>-3</sup> M	1.764	2.337	5.268	1.618	2.694	5.397	1.271	2.884	5.439	2.513	3.421	5.117

\* Values with significant statistical difference