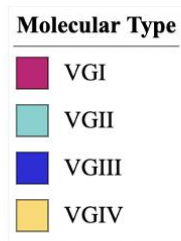
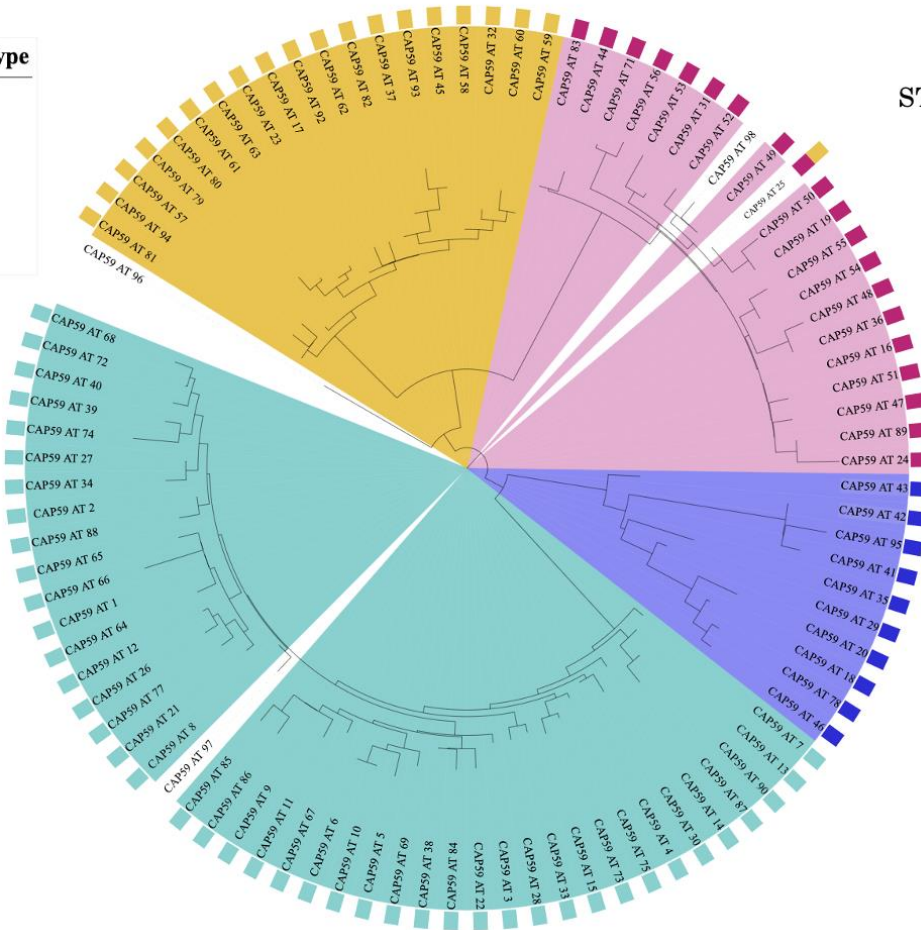


Tree scale: 0.01



ST402

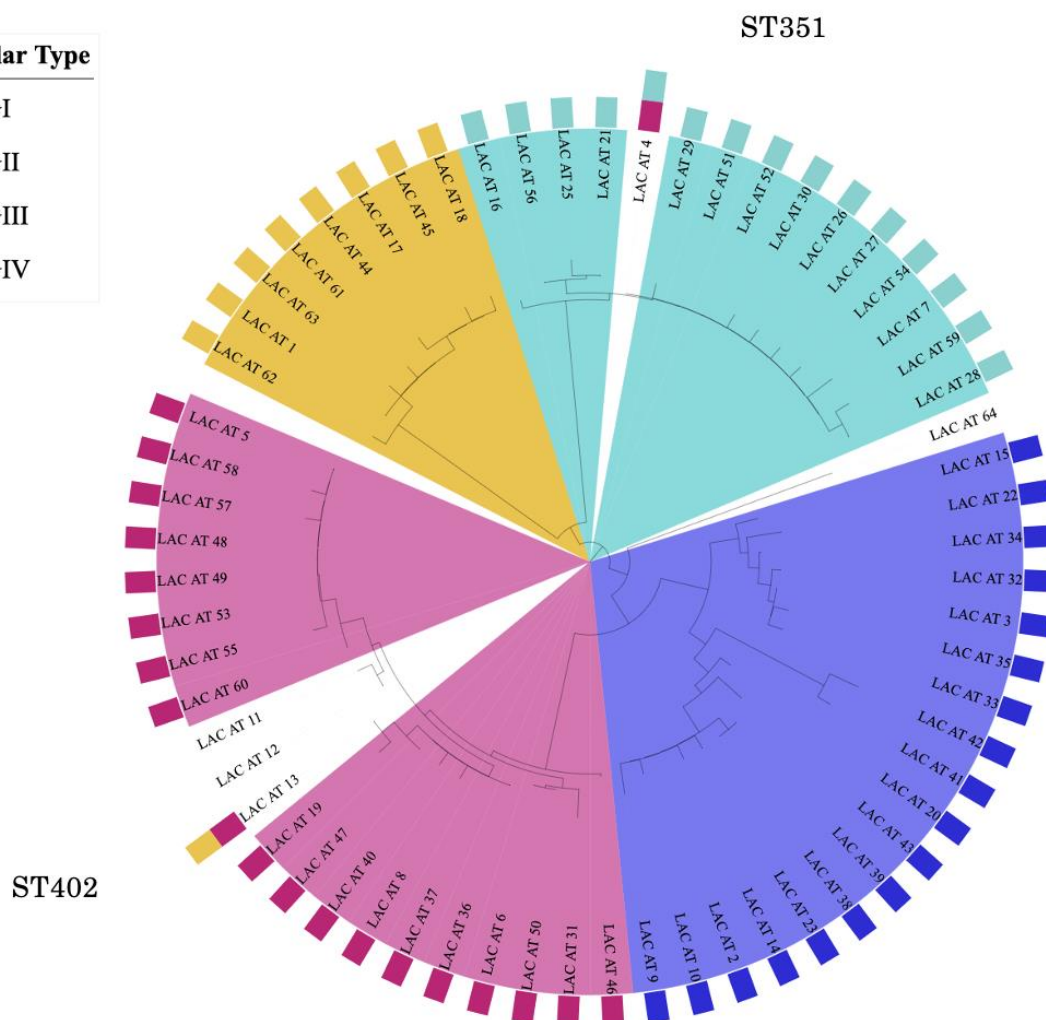


SF1: Phylogenetic tree illustrating the relationship among allele types (AT) found at the CAP59 locus of the *C. gattii* species complex. Four colours are used to display which lineage each AT is recorded in. Legends on the left indicate which colour corresponds to which lineage.

Tree scale: 0.01

Molecular Type

- VGI
- VGII
- VGIII
- VGIV

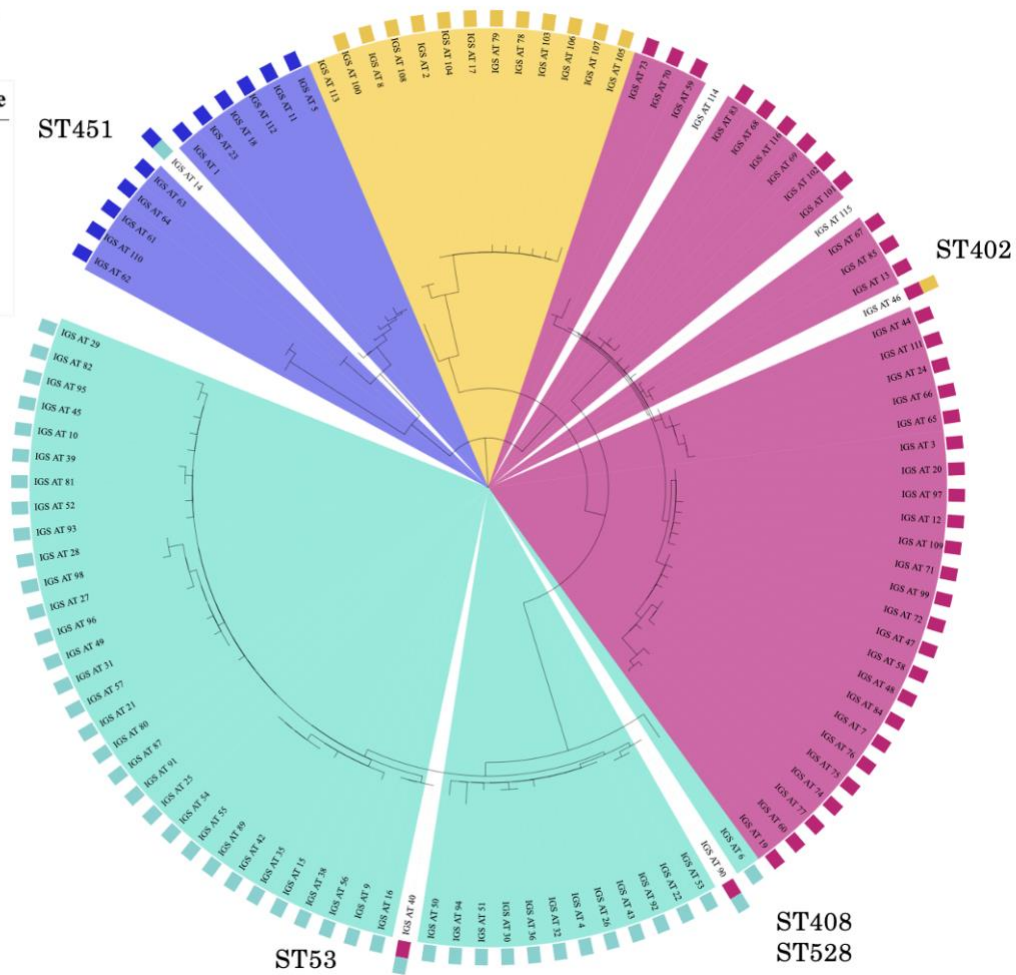


SF2: Phylogenetic tree illustrating the relationship among allele types (AT) found at the *LAC1* locus of the *C. gattii* species complex. Four colours are used to display which lineage each AT is recorded in. Legends on the left indicate which colour corresponds to which lineage.

Tree scale: 0.01

Molecular Type

- VGI
- VGII
- VGIII
- VGIV



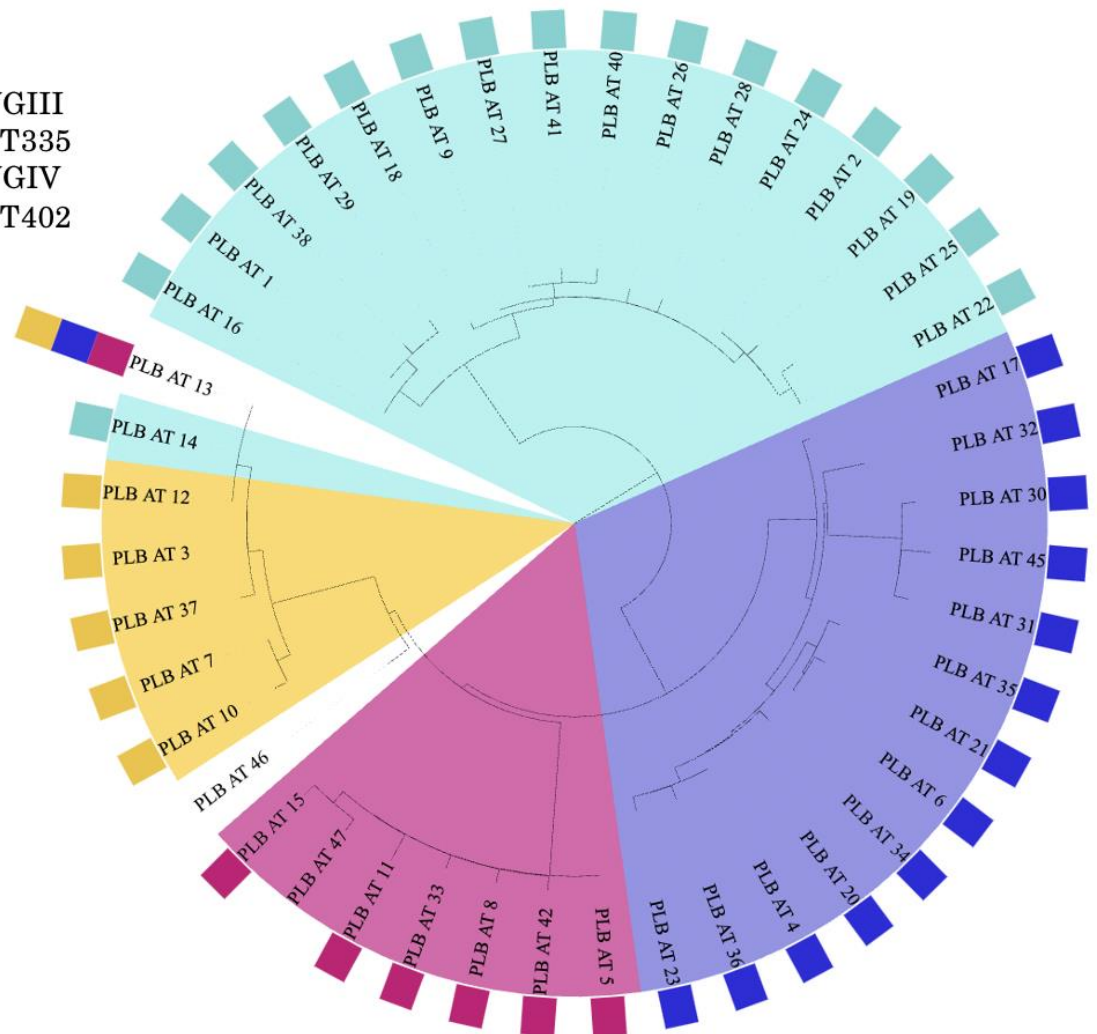
ST3: Phylogenetic tree illustrating the relationship among allele types (AT) found at the *IGS1* locus of the *C. gattii* species complex. Four colours are used to display which lineage each AT is recorded in. Legends on the left indicate which colour corresponds to which lineage.

Tree scale: 0.01

Molecular Type

- VGI
- VGII
- VGIII
- VGIV

VGIII
ST335
VGIV
ST402

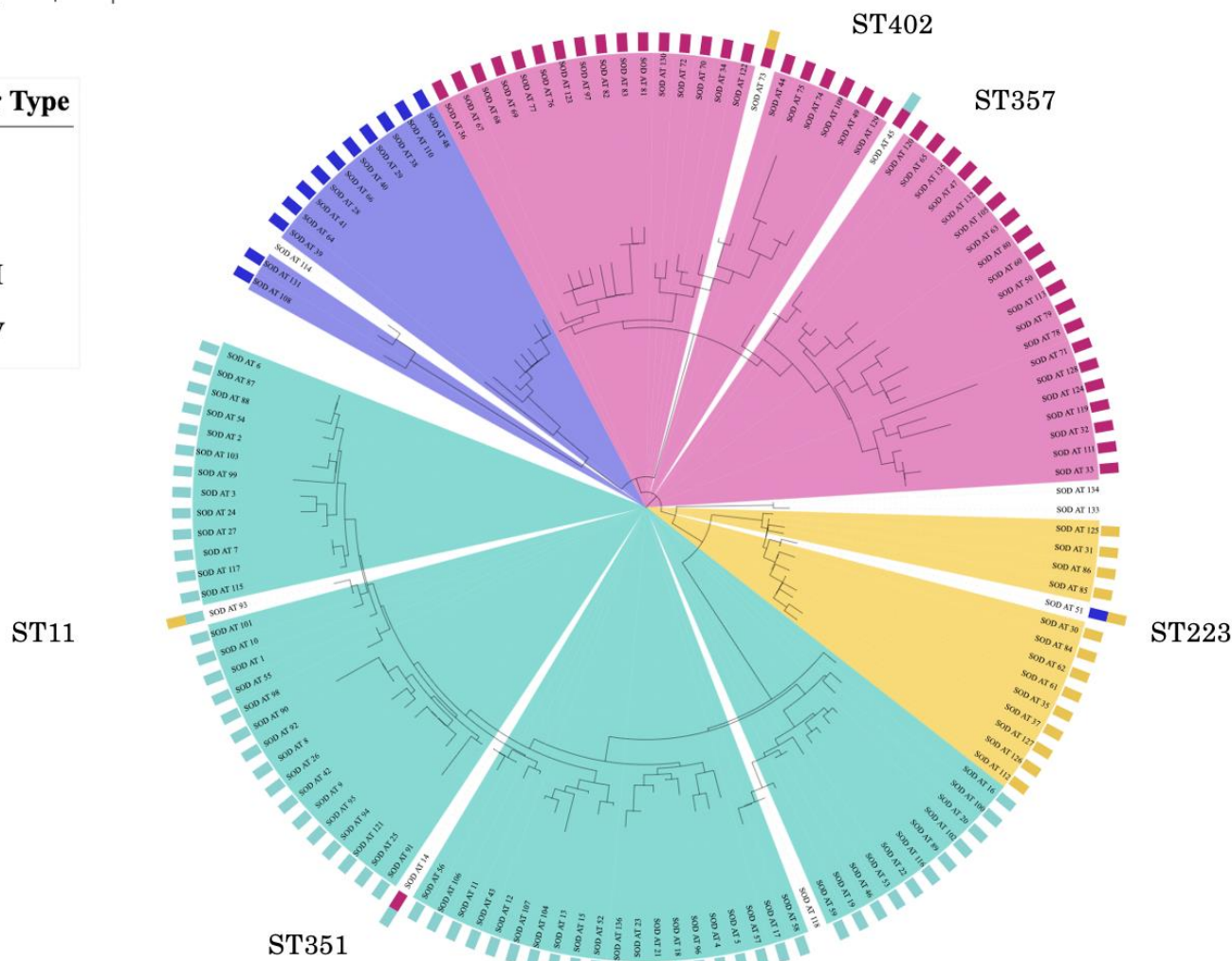


SF4: Phylogenetic tree illustrating the relationship among allele types (AT) found at the *PLB1* locus of the *C. gattii* species complex. Four colours are used to display which lineage each AT is recorded in. Legends on the left indicate which colour corresponds to which lineage.

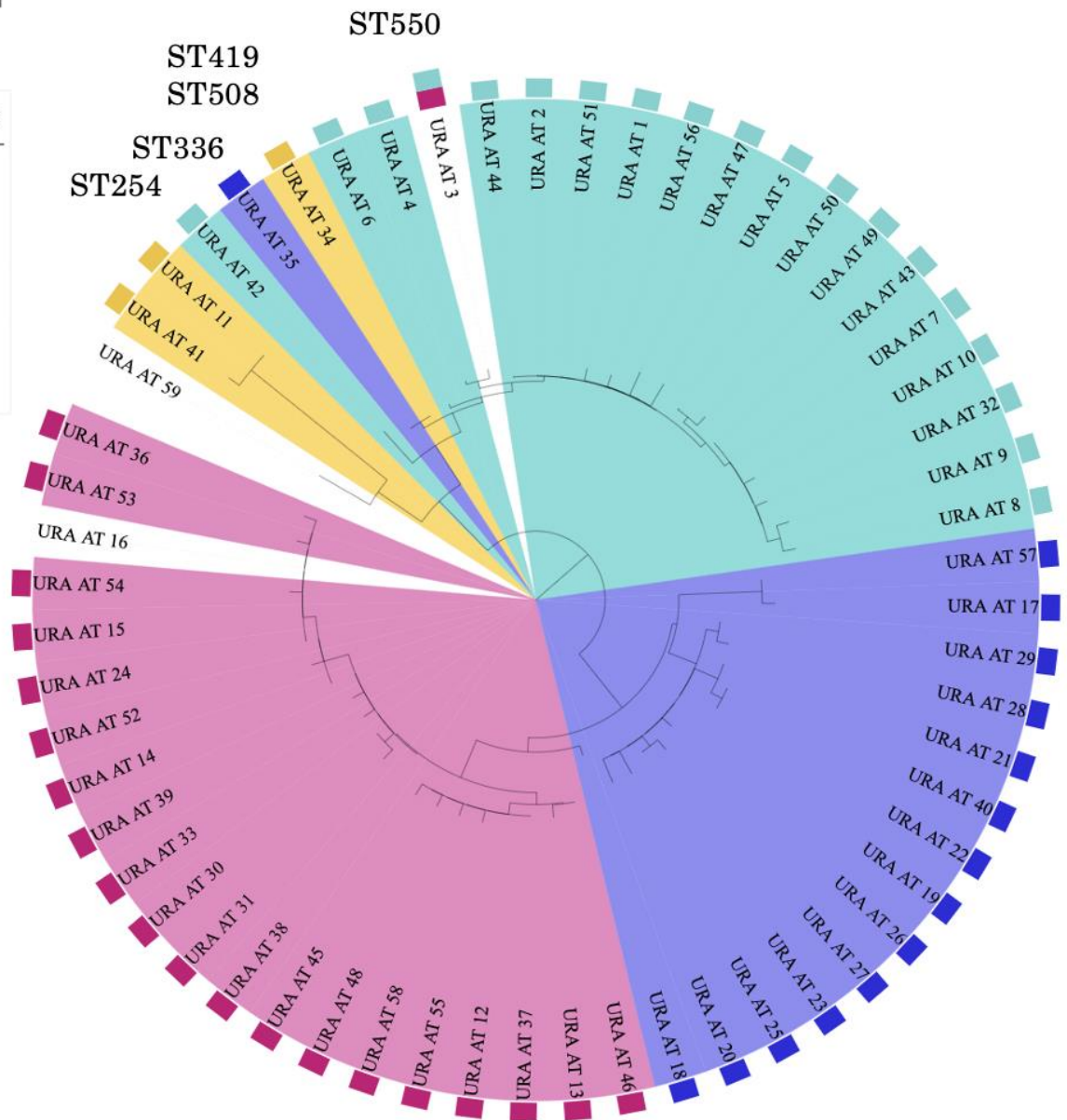
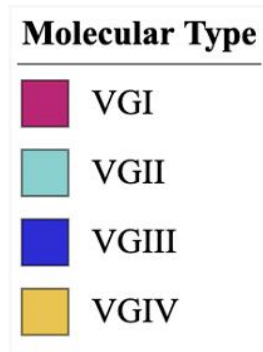
Tree scale: 0.01

Molecular Type

- VG I
- VG II
- VG III
- VG IV



SF5: Phylogenetic tree illustrating the relationship among allele types (AT) found at the *SOD1* locus of the *C. gattii* species complex. Four colours are used to display which lineage each AT is recorded in. Legends on the left indicate which colour corresponds to which lineage.



SF6: Phytogenic tree illustrating the relationship among allele types (AT) found at the *URA5* locus of the *C. gattii* species complex. Four colours are used to display which lineage each AT is recorded in. Legends on the left indicate which colour corresponds to which lineage.