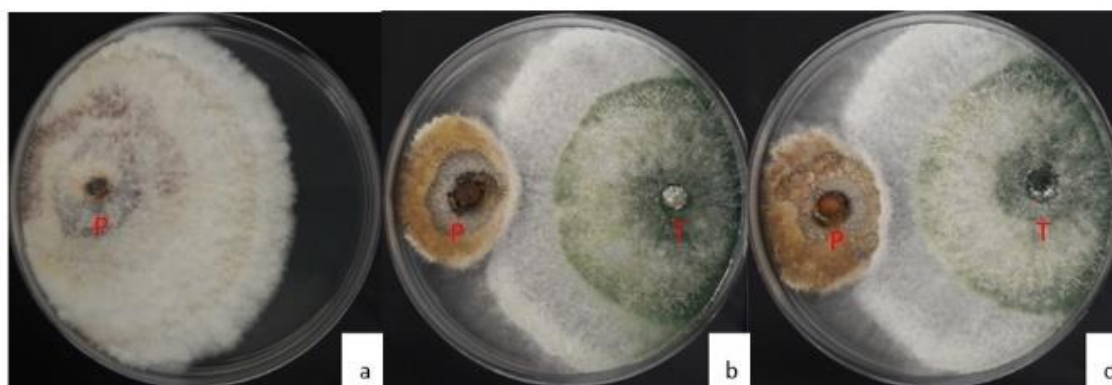


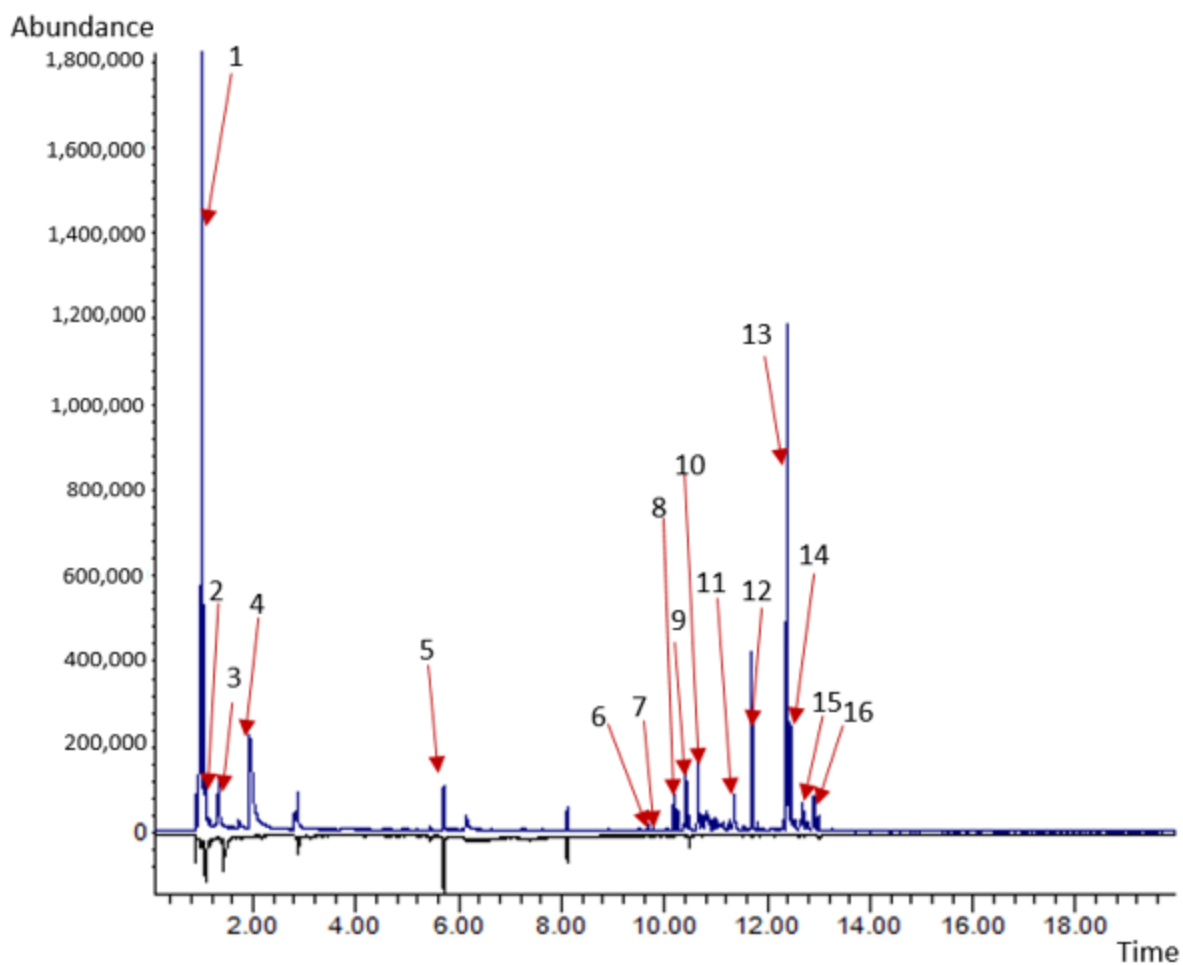
Supplementary Materials

**Table S1.** Primer pairs used for gene expression analysis by qPCR technique.

Gene	Transcript ID <i>Trichoderma</i> strain #5001	Transcript ID <i>Trichoderma</i> strain #5029	Size (bp)	Forward primer (5'-3')	Reverse primer (5'-3')
<i>bgn</i>	4761	6905	137	AACAAGCTCAACCATGCGTA	GGCATGTCATCCTTGTTGTT
<i>act</i>	7320	562	89	CTGGCACCACACCTTCTACA	TGGACTTGGGGTTGATGG
<i>chit</i>	4269	7447	103	GGAACCCAAACTCGAAACAA	TCGTCGTCATCGCAATAAAA
<i>endo</i>	7128	4923	136	CCTGCAGATTTGGTCACGTC	CATCGTTCCAGGAATCATCA
<i>qid</i>	3183	107	83	GCTCCTTTGCTACCTGGAAC	CGACTTGGTCTTGGAGTCGT
<i>prb</i>	8501	5207	112	GCCTCCGTTGATGCAGATTCCCAT	TCCAAGTGTGCGATGTTGTACG
<i>tef</i>	509	1382	103	TGAGAAGTTCGAGAAGGAAGC	GATGGTGATAACCACGCTCAC
<i>pra</i>	5419	2538	101	GTCTACCCTGCCTCCCAGAT	TAGGACGGGTTACGATGAT



**Figure S1.** Growth inhibitory effect of the b) *Trichoderma* strain #5001, c) strain #5029 on *P. noxium* strain B after 5 days of inoculation in dual culture (T: *Trichoderma* and P: *P. noxium*), a) *P. noxium* strain B grown alone.



**Figure S2.** Chromatogram of volatile compounds produced by *P. noxium* strain B (above zero level); chromatogram of volatile compounds detected in the PDA media control (below zero level). Numbers refer to compounds listed in Table S2

**Table S2.** Volatile compounds produced by *P. noxium* strain B tentatively identified through SPEM GC/MS analysis

Peak number	Compounds	Class	Retention time	Area %
1	Ethanol	Alcohol	1.02	28.47
2	Furan	Furans	1.06	2.88
3	Isobutanol	Alcohol	1.32	2.47
4	Isopentanol	Alcohol	1.94	11.51
5	limonene	monoterpene	6.14	1.01
5	$\beta$ - necoclovene	Sesquiterpene	9.69	0.31
6	Aristolene	Sesquiterpene	9.78	0.21
7	Thujopsene	Sesquiterpene	10.18	1.61

8	2-isopropenyl-4a,8, dimethyl-1,2,3,4a,5,6,7 octahydronaphthalene	Sesquiterpene	10.42	2.55
9	$\delta$ -gurjunene	Sesquiterpene	10.65	3.35
10	$\beta$ -elemene	Sesquiterpene	11.36	1.34
11	$\beta$ -caryophyllene	Sesquiterpene	11.70	8.14
12	8-isopropenyl-1,5-dimethyl-cyclodeca-1,5-diene	Sesquiterpene	12.39	22.93
13	unidentified sesquiterpene	Sesquiterpene	12.45	5.27
14	Cadinene	Sesquiterpene	12.68	1.29
15	Elixene	Sesquiterpene	12.91	1.83



**Figure S3.** Effect of volatile compounds on the growth of *Arabidopsis thaliana* in a shared atmosphere with *Trichoderma* strains #5001 and #5029 for 12 days. (a) Control plants exposed to PDA medium, (b) plants exposed to *Trichoderma* strain #5001 and (c) plants exposed to the strain #5029.