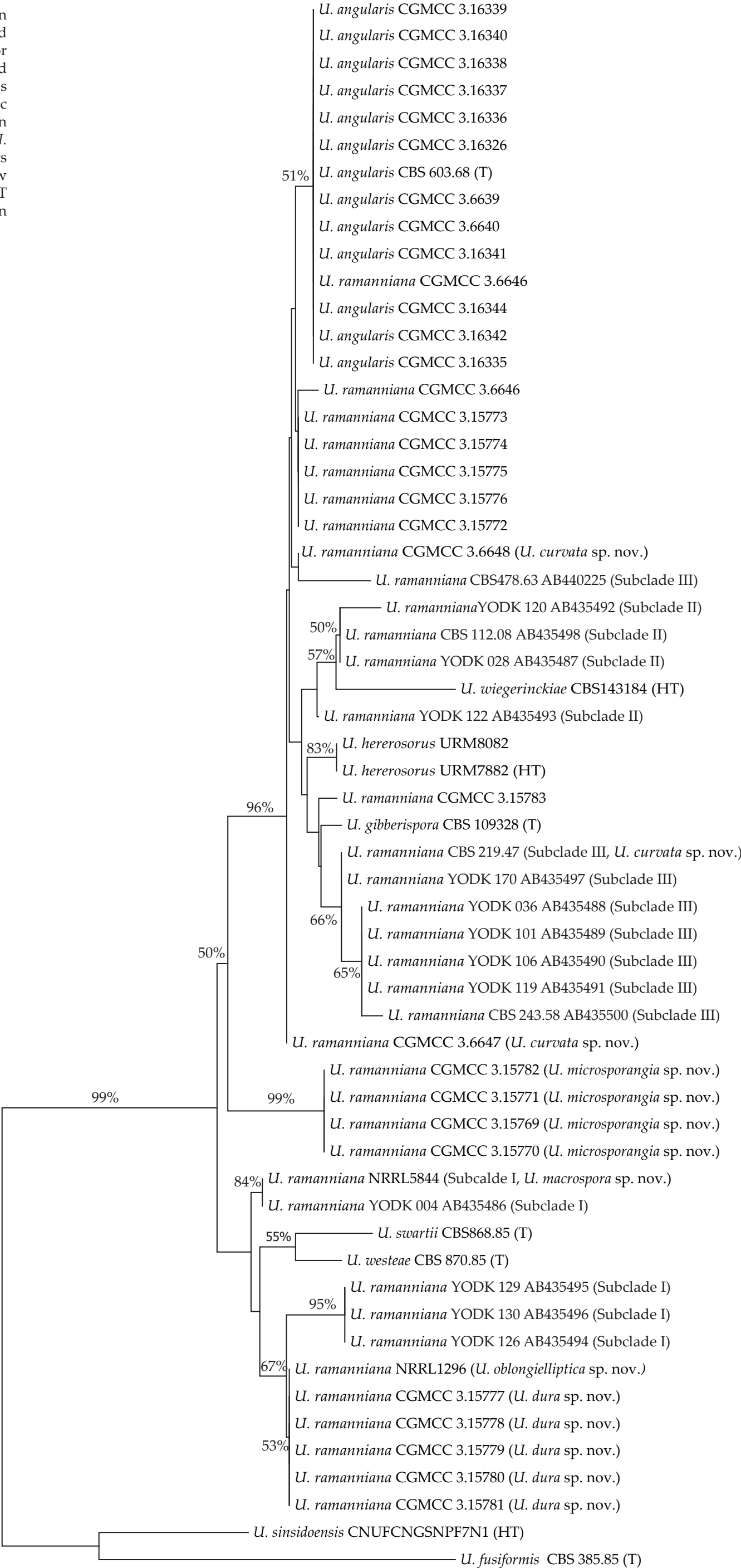


Figure S1. Phylogenetic tree based on nLSU rDNA D1/D2 region inferred from neighbor-joining (NJ) analysis for *Umbelopsis ramanniana* and related species. Branches with bootstrap values ≥ 50% were given. The taxonomic position of the strains was indicated in parentheses. “Subclade” following *U. ramanniana* strains were the treatments by Ogawa et al [28], while those new species were established in this study. T = ex-type strain, IT = ex-isotype strain and HT = ex- holotype strain.



0.0050