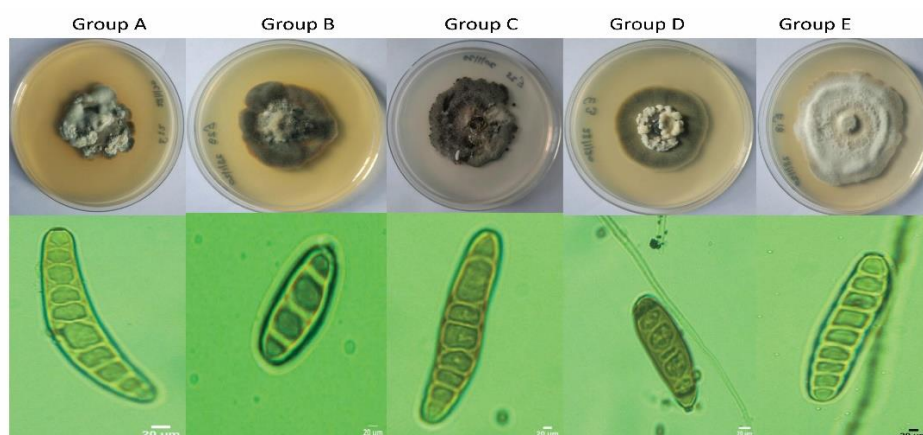
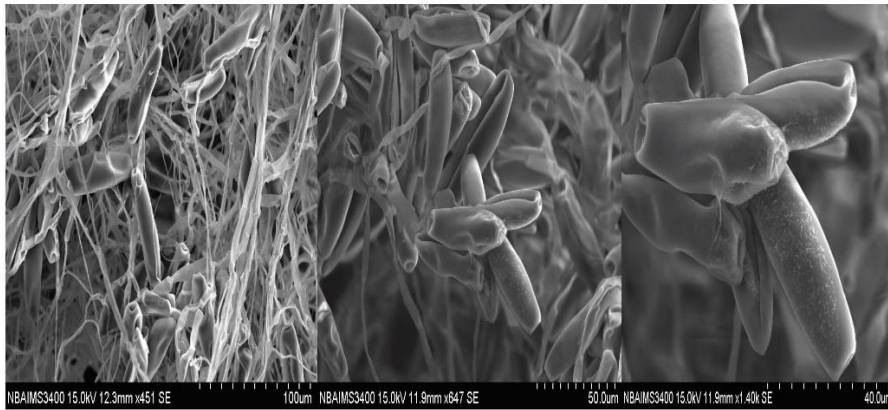


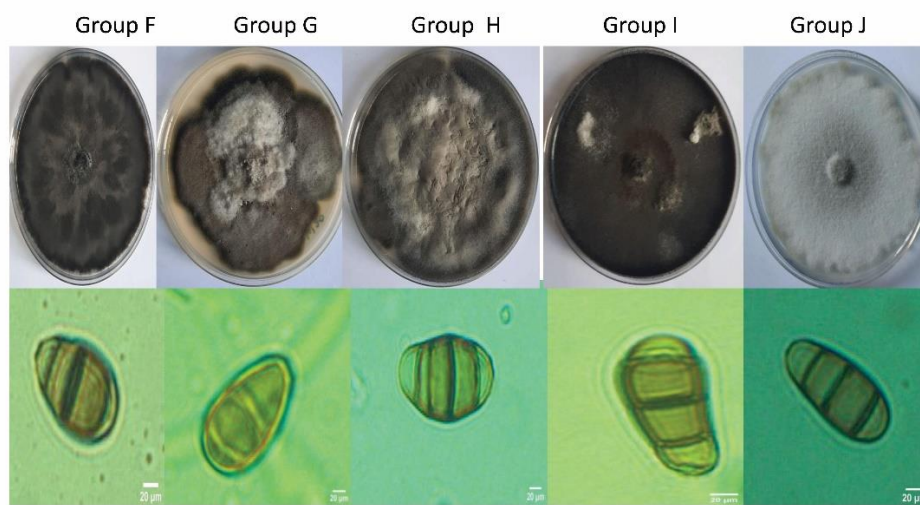
Supplementary Figure S1: Sampling district location shown in Map of India.



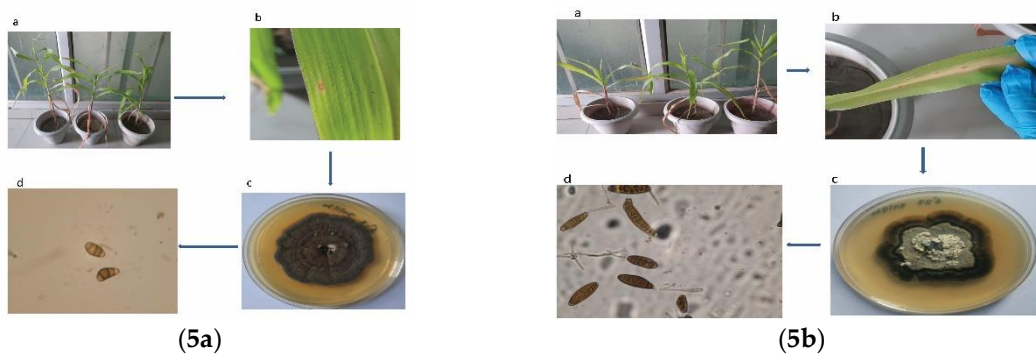
Supplementary Figure S2. Representative *Bipolaris* isolates showing the morphological description from Group A to E



Supplementary Figure S3. Scanning electron microscope showing conidiophore, conidia and hilum of *Bipolaris* isolates.



Supplementary Figure S4. Representative isolates of *Curvularia* spp. showing the morphological descriptions from Group F- Group J.



Supplementary Figure S5. 5a-a) Pot experiment for pathogenicity proving of maize leaf spot b) maize leaf spot. symptomatic leaves c) Fully grown *Curvularia lunata* culture plate d) Microscopic image of conidia of *Curvularia lunata* at 40X; 5b-a) Pot experiment for pathogenicity proving of maydis leaf blight b) maydis leaf blight symptomatic leaves c) Fully grown *Bipolaris maydis* culture plate d)Microscopic image of conidia of *Bipolaris maydis* at 40X.