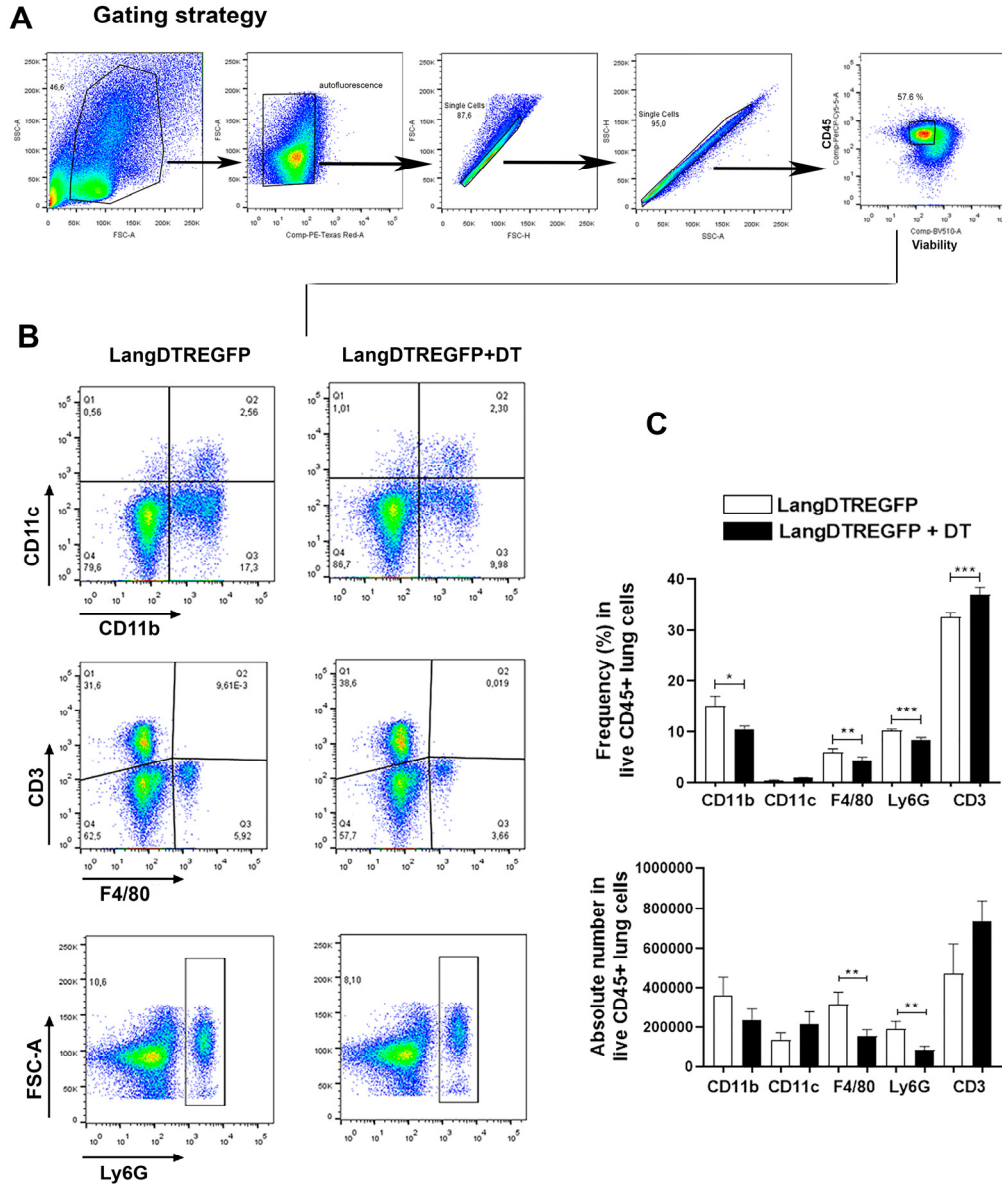


## Supplementary Figure S1, related to Figure 2



**Figure S1.** Flow cytometry analysis of lung cell suspensions from *C. neoformans*-infected *LangDTREGFP* mice (7 dpi). **(A)** Gating strategy used to identify immune cell subsets in lung cell suspensions. **(B)** Representative dot plots and **(C)** bar graphs showing the frequency and absolute number of CD11c, CD11b, CD3, F4/80 and Ly6G on live CD45 positive cells. Each bar shows mean + SEM. Statistical differences were evaluated by unpaired t-test. \*  $p < 0.02$ ; \*\*  $p < 0.05$ ; \*\*\*  $p < 0.01$ .