

Figure S1. Construction of the *cdc42* mutants. **(A)** The strategy for *cdc42* deletion. **(B)** Gel electrophoresis for the identification of deletion and complementary strains. Lane 1: WT, lane 2: $\Delta cdc42$; lane 3: $\Delta cdc42::cdc42$, M: marker.

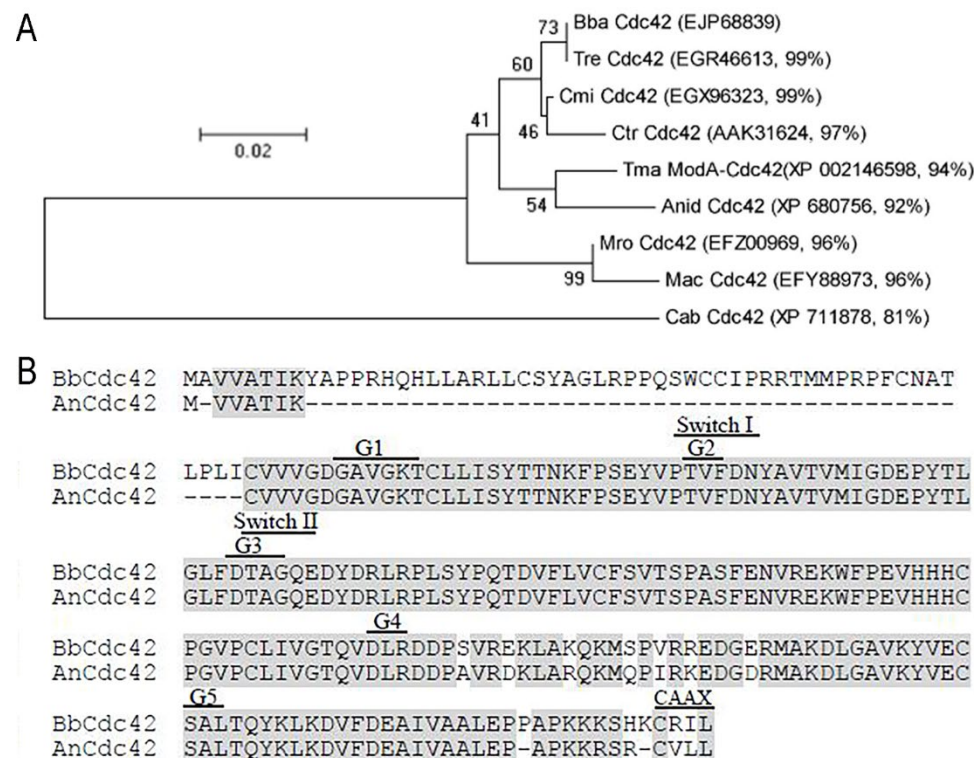


Figure S2. Phylogenetic analysis and the structural features of the Cdc42 in *B. bassiana* compared with several homologues. **(A)** Phylogenetic tree for Cdc42 homologues (NCBI codes and the identity in parentheses) in several fungi [*Beauveria bassiana* (Bba), *Trichoderma reesei* (Tre), *Cordyceps militaris* (Cmi), *Colletotrichum trifolii* (Ctr), *Talaromyces marneffeii* (Tma), *Aspergillus nidulans* (Anid), *Metarhizium robertsii* (Mro), *Metarhizium acridum* (Mac), *Candida albicans* (Cab)]. **(B)** Sequence comparison of Cdc42 with the orthologue in *Aspergillus nidulans* (Anid).

Table S1. Primers for constructing gene deletion or complementary strains.

Primers	Sequences	Purpose
Cdc42-up-F/R	TCCCCCGGGTCTTTCTGCCGAGTGAATGCC/ CGCGGATCCCGAAGACCAGCATACGAGCATAG	Cloning cdc42-5'
Cdc42-dn-F/R	AAGCTCTAGATCAGATGCGTTGTTGTCGGAGAC/ GGACTAGTTAAATGCCAGGTGAAACAGG	Cloning cdc42-3'
Cdc42-com- F/R	GGGGACAAGTTTGTACAAAAA- GCAGGCTGCGATGTACGGATATAGATAGGCTG/GGG- GACCACTTTGTACAAGAAAGCTGGGTCTGGGGG- TATGATTGATTACAAAATG	Cloning full-length cdc42
Cdc42-id-F/R	CCCCAGTCAACCTAATCACCAAATC/ GTAGAACAA- GCCGTTAGCGTCATT	Identification of gene-deletion clones