

Fig. S1 Characterization of the MAPK CfMK1 in *C. fruticola*. **(A)** Domain structure and amino acid sequence alignment of CfMK1. **(B)** Phylogenetic analysis of CfMK1 and its homologs from other fungi.

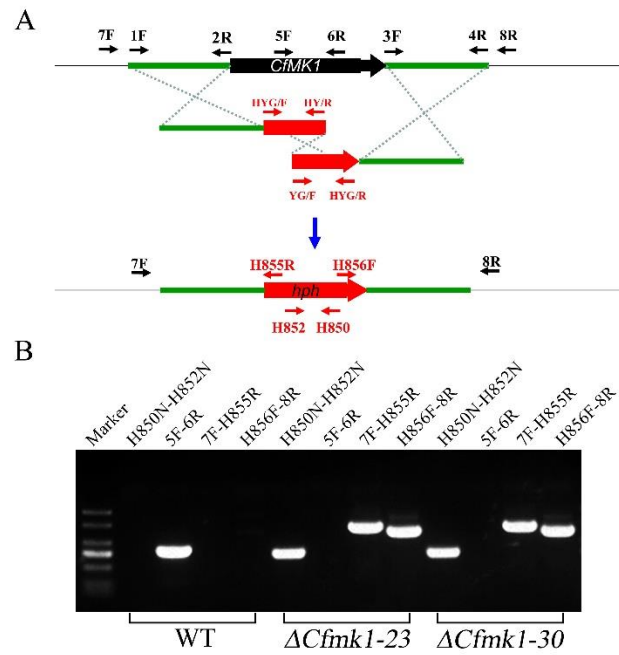


Fig. S2 Generation of *CfmK1* gene deletion mutants. **(A)** Schematic diagram of gene deletion with the split-marker approach. The primers used for gene replacement and screening are listed in Table S1. **(B)** Deletion mutants were detected by four pairs of primers (Table S1). Hph, hygromycin.