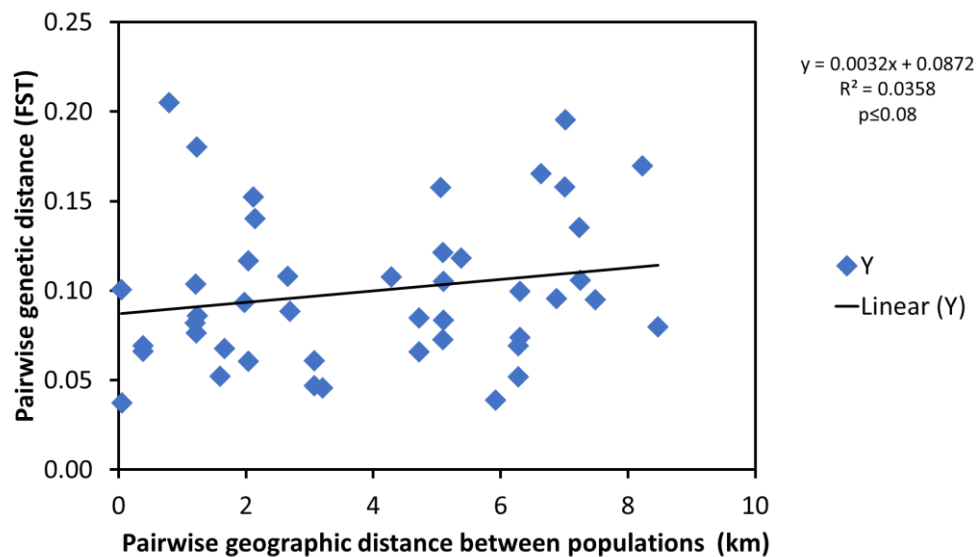
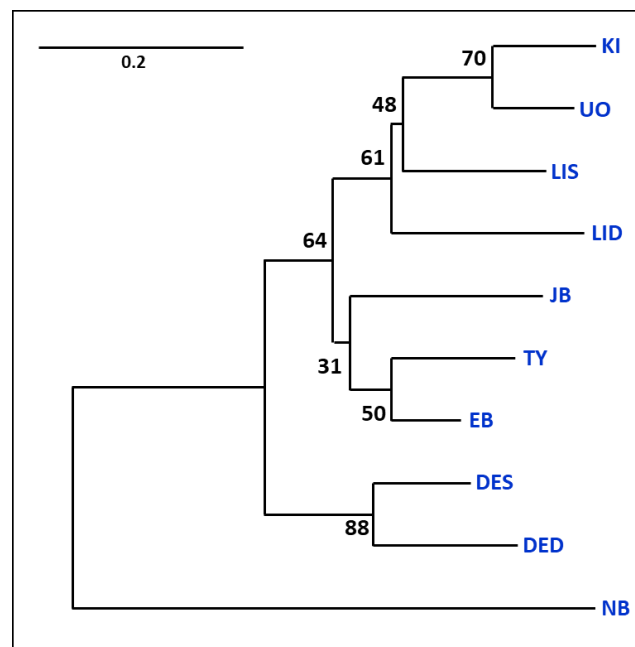


## Supplementary Figures for: Population Genetics Assessment of the Model Coral Species *Stylophora pistillata* from Eilat, the Red Sea



**Supplementary Figure S1.** Mantel test for the pairwise geographic distances between populations (X-axis) and the pairwise genetic distances ( $F_{ST}$ ) (Y-axis) for the sampling sites of *Stylophora pistillata* in the Gulf of Eilat, created by GenAlEx software version 6.5.



**Supplementary Figure S2.** The genetic distances and relationships between the *Stylophora pistillata* populations (sites) in Eilat, created by POPTREE2. Jordan Border beach (JB), North Shore beach (NB), Kisoski beach (KI), Dekel beach shallow (DES), Dekel beach deep (DED), Tour Yam beach (TY), Underwater Observatory beach (UO), Lighthouse beach shallow (LIS), Lighthouse beach deep (LID) and Egypt Border beach (EB). Values at the nodes represent bootstrap values.