

Supplementary Material

Benthic opportunistic polychaete/amphipod ratio: indicator of pollution or modification of environment by macroinvertebrates?

Alexey A. Maximov* and Nadezhda A. Berezina

Zoological Institute of the Russian academy of Sciences, Universitetskaya nab. 1, 199034
St. Petersburg, Russia

*Correspondece: alexeymaximov@mail.ru

Table S1. Hydrographic conditions at study sites

Site	Date	Depth, m	Temperature, °C		Salinity, psu		Oxygen, ml/l	
			surface	bottom	surface	bottom m	surface	bottom
4F	06.08.201	30	15.2	3.6	3.46	5.48	6.61	3.08
2 U	06.08.201	38	17.4	4.4	2.95	6.18	7.28	3.92
17F	06.08.201	52	17.1	4.3	3.91	7.28	6.82	2.16
2F5	07.08.201	38	17.1	4.4	2.70	6.2	7.20	3.90
9F	07.08.201	36	17.1	4.4	2.70	7.1	7.50	3.91
6K	08.08.201	27	17.1	4.4	2.73	5.26	7.01	3.69
8F	08.08.201	30	17.1	4.7	2.70	5.30	7.76	4.51
4F5	08.08.201	30	17.1	4.7	2.96	5.28	7.76	4.51
1F5	08.08.201	26	16.2	3.8	2.99	5.26	7.22	3.17
4F	15.09.202	28	16.7	16.0	1.17	2.29	7.90	7.20
2U	15.09.202	36	16.6	15.3	2.14	2.61	7.30	6.80
17F	16.09.202	52	15.6	11.5	3.02	3.55	7.30	4.80
9F	15.09.202	35	16.2	15.0	2.17	3.00	8.30	7.40
6K	15.09.202	26	16.0	14.9	2.70	3.03	7.30	6.70
6L	15.09.202	28	15.9	14.9	2.70	3.1	8.50	7.20
1L	16.09.202	27	15.3	14.9	3.14	3.3	7.9	6.9
2L	16.09.202	33	15.1	14.3	3.25	3.46	7.8	6.6
20F	16.09.202	47	15.6	11.5	3.19	4.02	7.9	4.9
FZ19	15.09.202	27	16.2	14.0	2.14	2.33	7.0	6.5

Table S2. Standardized values of pollution related variables.

Site	Date	Variable												
		Total HC, mg l ⁻¹	TP wat, mg l ⁻¹	Chl-a, µg l ⁻¹	WP	PAH, mg kg ⁻¹	TOC, %	Hg, mg kg ⁻¹	Cd, mg kg ⁻¹	Cu, mg kg ⁻¹	Pb, mg kg ⁻¹	Zn, mg kg ⁻¹	TP _{sed} , mg kg ⁻¹	SP
4F	06.08.2019	-0.48	0.93	-0.15	0.10	-1.02	0.16	0.19	-0.23	0.45	0.68	0.07	-1.57	-0.16
2 GM	06.08.2019	-0.46	-0.23	0.12	-0.19	-0.96	-0.32	1.08	0.24	1.33	1.46	0.29	-1.08	0.26
17F	06.08.2019	-0.52	-0.29	-0.44	-0.42	-0.22	0.16	0.78	1.37	1.55	0.98	0.40	1.39	0.80
2F5	07.08.2019	-0.48	-0.36	-0.09	-0.31	-0.97	-0.85	-1.30	0.03	0.23	0.07	-0.05	-0.09	-0.37
9F	07.08.2019	-0.50	-0.48	-0.88	-0.62	-1.07	-0.61	0.04	0.01	0.67	0.98	-0.24	1.39	0.15
6K	08.08.2019	0.94	-0.48	-0.87	-0.14	-1.11	-0.32	-0.56	-0.50	-0.10	-0.11	-0.10	0.40	-0.30
8F	08.08.2019	0.76	-0.48	0.00	0.09	-1.03	-0.85	-0.11	-0.37	0.01	-0.17	-0.33	0.89	-0.24
4F5	08.08.2019	0.94	-0.48	-0.81	-0.12	-0.90	-1.09	-1.15	-0.43	-0.65	-0.23	-0.39	-1.08	-0.74
1F5	08.08.2019	3.34	-0.36	0.50	1.16	-0.49	-0.56	-0.26	-0.50	-0.43	-0.41	-0.37	-1.32	-0.54
4F	15.09.2020	-0.35	-0.23	-0.01	-0.20	1.86	-1.56	1.82	0.17	1.44	1.28	-0.61	-0.09	0.54
2GM	15.09.2020	-0.59	-0.48	-2.11	-1.06	0.10	0.26	-0.41	3.38	-0.21	1.46	3.90	-0.09	1.05
9F	15.09.2020	-0.46	-0.48	0.90	-0.02	0.65	1.02	0.78	0.17	0.45	0.37	0.13	-0.09	0.44
6K	15.09.2020	0.94	-0.23	0.30	0.34	1.13	0.43	-0.30	-0.37	0.01	-0.17	-0.15	-0.09	0.06
6L	15.09.2020	-0.54	-0.48	1.53	0.17	0.94	-1.57	-1.71	-0.70	-0.76	-1.14	-0.43	0.40	-0.62
1L	16.09.2020	-0.61	-0.36	0.25	-0.24	1.74	0.90	-1.14	-0.74	-1.20	-1.44	-0.61	1.39	-0.14
2L	16.09.2020	-0.18	0.35	-0.71	-0.18	1.21	1.57	-0.70	-0.23	-1.53	-1.02	-0.42	1.63	0.06
17F	16.09.2020	-0.57	-0.48	-0.98	-0.68	0.08	1.59	1.23	0.70	1.33	0.43	0.22	-0.09	0.69
20F	16.09.2020	-0.63	3.70	1.56	1.54	0.12	1.57	1.53	-1.06	-0.76	-1.26	-0.57	-0.83	-0.16
FZ19	15.09.2020	-0.55	0.93	1.91	0.76	-0.05	0.05	0.19	-0.93	-1.86	-1.75	-0.75	-1.08	-0.77
Mean		0.039	0.016	6.460		0.165	3.766	0.137	0.874	37.895	43.847	165.947	0.015	
SD		0.054	0.016	2.081		0.118	2.083	0.067	0.748	9.085	16.508	108.784	0.004	

Notes. Total HC, mg l⁻¹, TP wat, mg l⁻¹ and Chl-a, µg l⁻¹ are respectively concentrations of total hydrocarbon, total phosphorus and chlorophyll-a in water, WP is water pollution index, PAH, µg l⁻¹ is concentration of polycyclic aromatic hydrocarbons in sediments, TOC, % is total organic content, Hg, mg kg⁻¹, Cd, mg kg⁻¹, Cu, mg kg⁻¹, Pb, mg kg⁻¹, Zn, mg kg⁻¹ are concentrations of respective metals in sediments, TP_{sed}, mg kg⁻¹ is concentration of total phosphorus in sediment, SP is sediment pollution index.

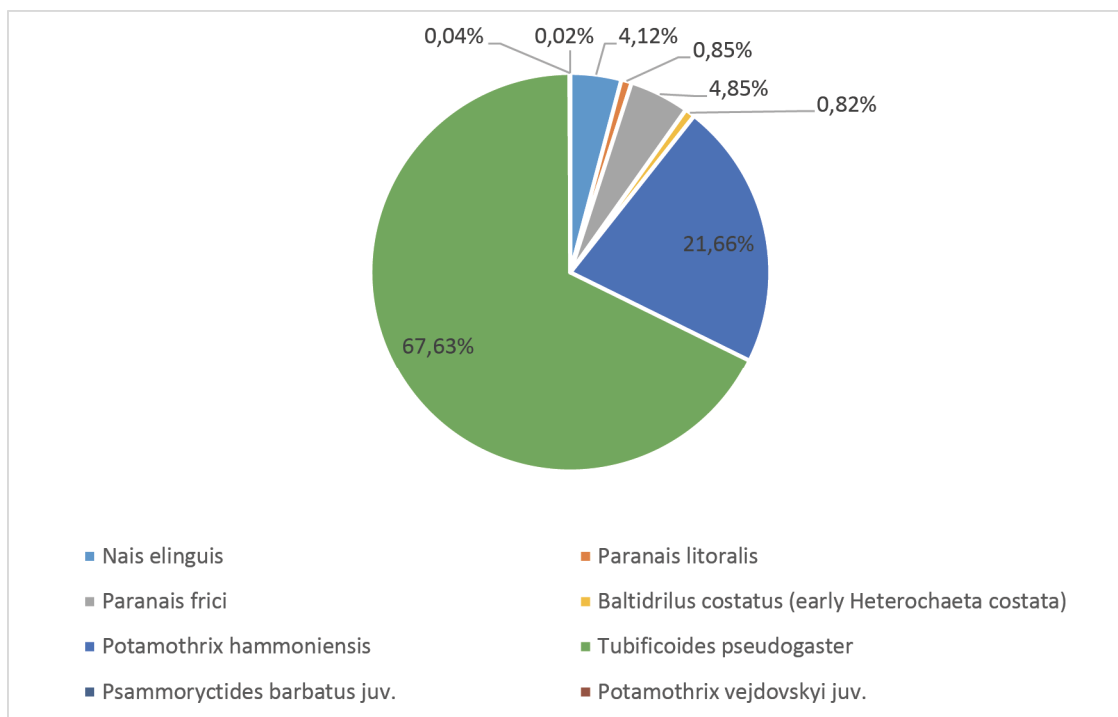


Figure S1. Percentage of different oligochaete species in the total abundance of oligochaetes.

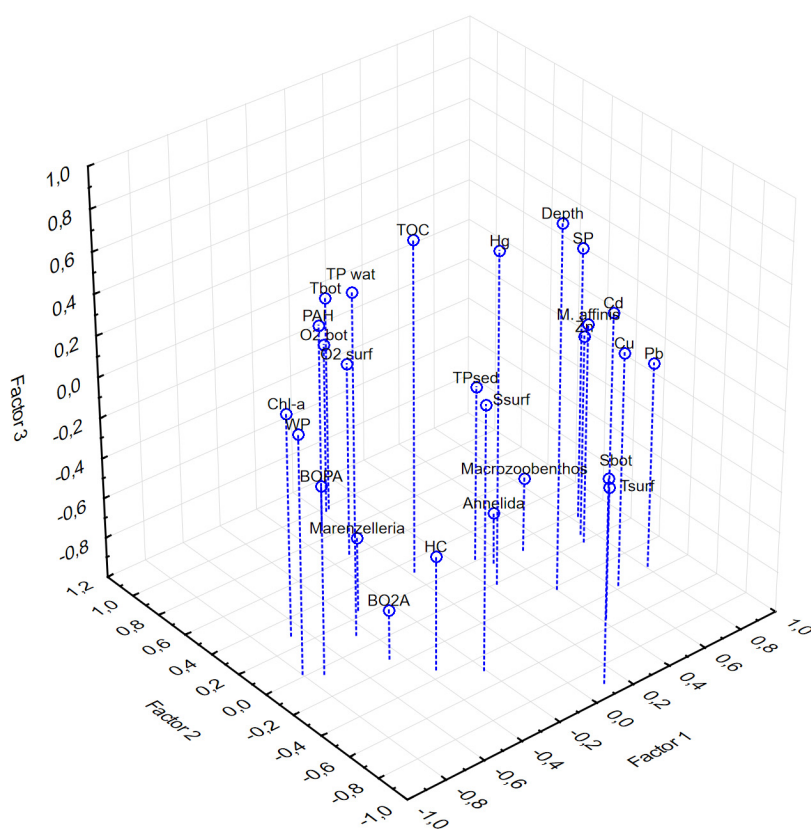


Figure S2. Factor loadings for the first three principal components. See designations in Tables 2 and 3.