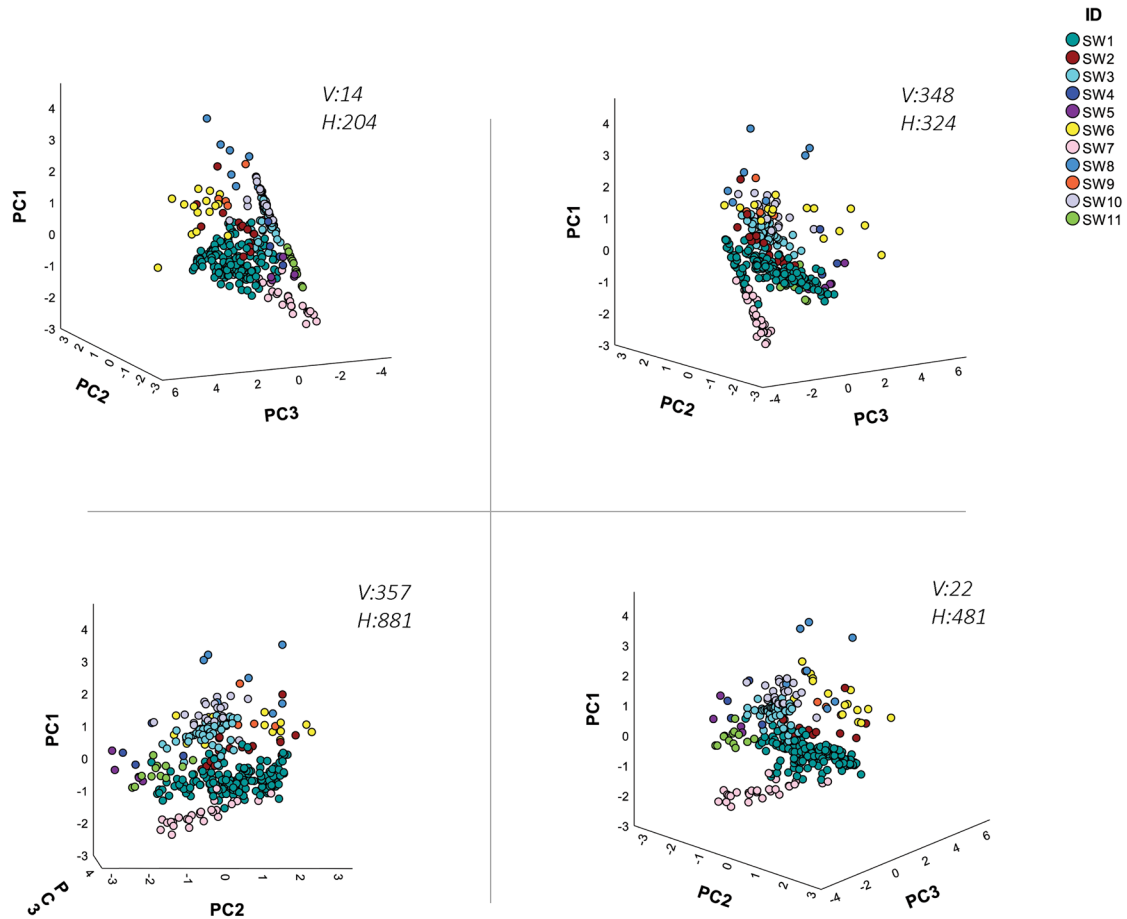


# Vocal behaviour of a bottlenose dolphin pod during a deadly bycatch event in the Gulf of Catania, Ionian Sea

Francesca Terranova, Alessandra Raffa, Stefano Florida, Clara Monaco, Livio Favaro

## Supplementary material



**Figure S1.** The 11 signature whistle types are plotted in the space defined by the first three Principal Components. Four different rotation angles are shown.

**Table S1.** Mean  $\pm$  standard deviation (SD) of acoustic parameters of the 11 signature whistle types.

| SW<br>ID | Frequency (kHz) |       |         |         |       |       | Inflections<br>(n) | Duration<br>(s) |
|----------|-----------------|-------|---------|---------|-------|-------|--------------------|-----------------|
|          | Start           | End   | Maximum | Minimum | Mean  | Range |                    |                 |
| SW1      | 9.88            | 7.3   | 12.2    | 4.74    | 8.79  | 7.46  | 2.3                | 1               |
| $\pm$ SD | 2.1             | 1.61  | 1.03    | 1.1     | 0.53  | 1.8   | 1.86               | 0.46            |
| SW2      | 9.52            | 8.09  | 13.48   | 7.22    | 10.64 | 6.26  | 0.8                | 0.96            |
| $\pm$ SD | 2.22            | 2.31  | 1.03    | 0.88    | 0.87  | 1.23  | 1.47               | 0.32            |
| SW3      | 7.92            | 11.74 | 12.56   | 7.77    | 10.62 | 4.79  | 0                  | 0.51            |
| $\pm$ SD | 0.85            | 1.73  | 0.43    | 0.85    | 0.42  | 0.95  | 0                  | 0.12            |
| SW4      | 5.35            | 13.79 | 14.08   | 4.91    | 9.04  | 9.18  | 0.25               | 0.74            |
| $\pm$ SD | 1.34            | 1.87  | 1.97    | 1.11    | 0.98  | 2.61  | 0.5                | 0.14            |
| SW5      | 4.12            | 11.73 | 13.65   | 4.04    | 7.38  | 9.61  | 0.8                | 0.66            |
| $\pm$ SD | 0.37            | 3.36  | 1.59    | 0.36    | 0.95  | 1.88  | 1.3                | 0.26            |
| SW6      | 10.56           | 10.27 | 17.72   | 6.73    | 12.02 | 10.99 | 6.47               | 1.3             |
| $\pm$ SD | 2.96            | 2.8   | 2.18    | 0.43    | 0.43  | 2.43  | 6.31               | 0.54            |
| SW7      | 7.42            | 5.37  | 7.51    | 4.93    | 5.24  | 2.84  | 0.15               | 0.25            |
| $\pm$ SD | 1.98            | 0.69  | 1.96    | 1.14    | 1.15  | 1.9   | 0.36               | 0.14            |
| SW8      | 11.1            | 16.59 | 17.85   | 9.24    | 12.92 | 8.61  | 0.57               | 0.41            |
| $\pm$ SD | 1.85            | 2.6   | 3.72    | 1.13    | 1.58  | 3.65  | 1.13               | 0.23            |
| SW9      | 10.41           | 10.8  | 15.15   | 8.98    | 12.71 | 6.17  | 2.5                | 0.83            |
| $\pm$ SD | 0.88            | 3.21  | 0.44    | 0.79    | 0.65  | 0.63  | 2.08               | 0.19            |
| SW10     | 8.54            | 13.68 | 14.65   | 8.41    | 11.16 | 6.25  | 0                  | 0.4             |
| $\pm$ SD | 0.95            | 2.15  | 0.98    | 0.96    | 0.43  | 1.52  | 0                  | 0.18            |
| SW11     | 5.23            | 10.37 | 10.41   | 5.19    | 8.08  | 5.22  | 0                  | 0.18            |
| $\pm$ SD | 0.92            | 0.78  | 0.78    | 0.94    | 0.48  | 1.23  | 0                  | 0.04            |

**Table S2.** Variance explained by the Principal Components showing eigenvalues  $> 1$ .

| Principal Component | Eigenvalue | % variance | % cumulative variance |
|---------------------|------------|------------|-----------------------|
| 1                   | 3.16       | 39.52      | 39.52                 |
| 2                   | 2.72       | 34.10      | 73.62                 |
| 3                   | 0.98       | 12.27      | 85.89                 |

**Table S3.** Factor loadings for the eight acoustic parameters on the Principal Components showing eigenvalue >1.

| Acoustic parameters | Principal Component |              |             |
|---------------------|---------------------|--------------|-------------|
|                     | 1                   | 2            | 3           |
| Maximum frequency   | <b>0.88</b>         | 0.40         | -0.05       |
| Mean frequency      | <b>0.86</b>         | -0.27        | -0.14       |
| End frequency       | <b>0.72</b>         | <b>-0.54</b> | -0.03       |
| Duration            | <b>0.69</b>         | <b>-0.50</b> | -0.14       |
| Range frequency     | -0.02               | <b>0.90</b>  | 0.13        |
| Minimum frequency   | 0.24                | <b>0.82</b>  | -0.28       |
| Inflection          | <b>0.66</b>         | <b>0.68</b>  | 0.05        |
| Start frequency     | 0.35                | -0.03        | <b>0.92</b> |

Bold text indicates the factor loadings with  $r > 0.5$ .