

SUPPLEMENTARY FIGURES

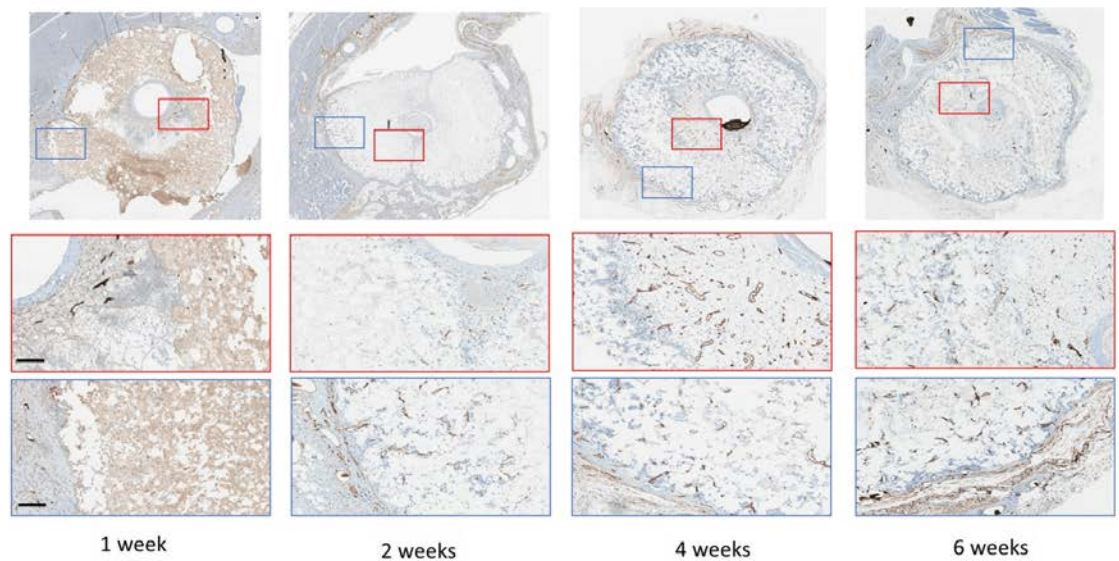


Figure S1. Decalcified immunohistochemistry (IHC) showing CD34 staining around blood vessels in monetite scaffolds implanted for up to 6 weeks. The black substance inside vessels in 1 week and 6 week samples is Microfill contrast agent.

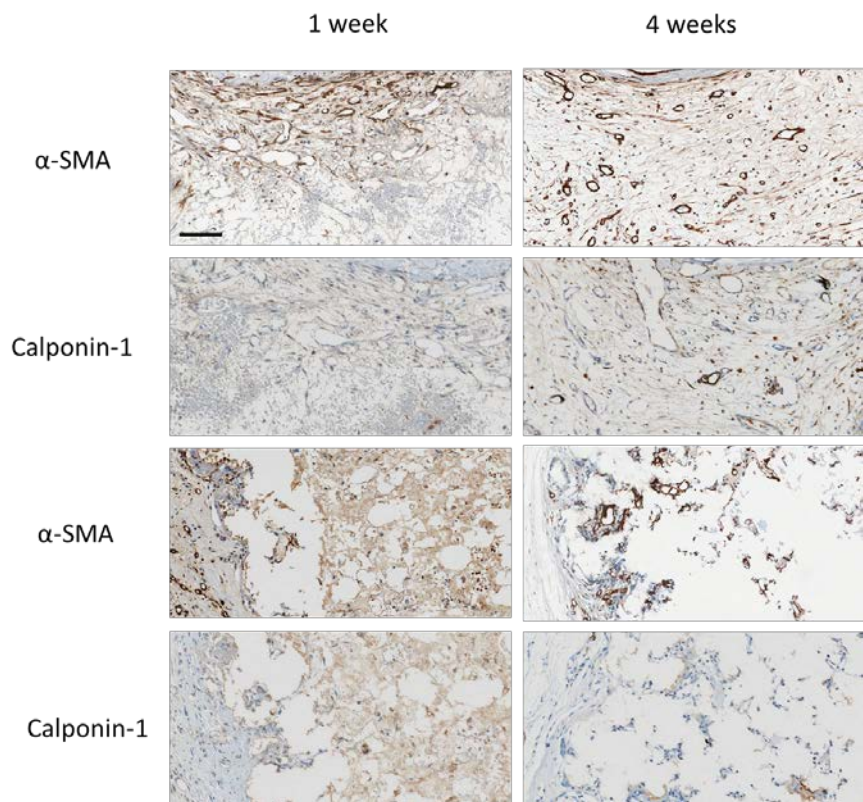


Figure S2. Decalcified immunohistochemistry: The 1st and 4th weeks after implant with vein, the expression of α -SMA and Calponin-1. high magnification Scale bar 200 μ m showing co-localisation of at least a population of the cells inside the scaffold.

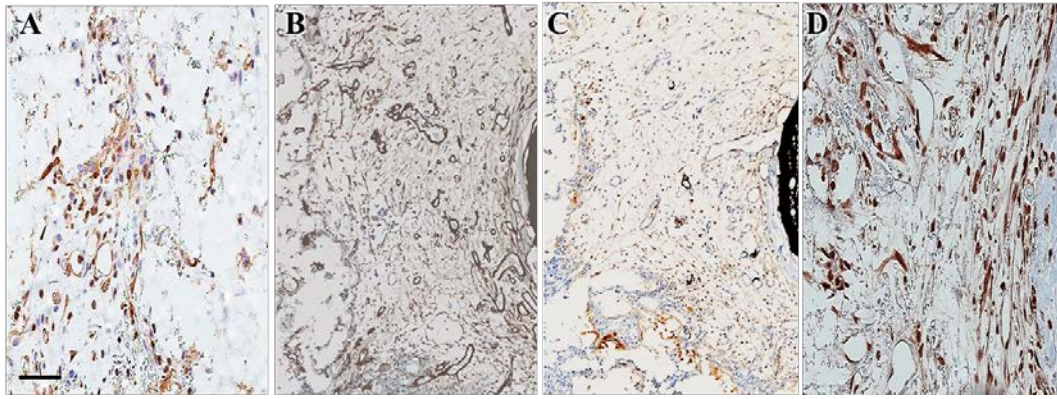


Figure S3. IHC of cells inside monetite scaffold at 1 wk. Rapid invasion by A) F4/80+ (macrophages,) B) αSMA+, C) Calponin-1+ D) IL8+ cells, Scale bar 30 μm.

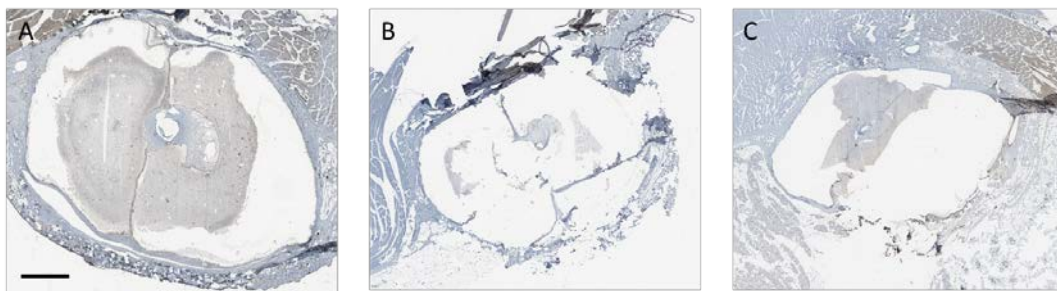


Figure S4. Decalcified immunohistochemistry (IHC) staining of NLRP3 expression. A) Brushite, B) MgP, C) CaSO₄. Scale bars 1 mm.