

Additional information for:

Platelet membrane-encapsulated MSNs loaded with SS31 peptide alleviate myocardial ischemia-reperfusion injury

Zaiyuan Zhang ^{a,1}, Zhong Chen ^{b,1}, Ling Yang ^{c,1}, Jian Zhang ^a, Yubo Li ^d, Chengming Li ^c, Rui Wang ^b, Xue Wang ^c, Shuo Huang ^c, Yonghe Hu ^{a**}, Jianyou Shi ^{e**}, Wenjing Xiao ^{f,g*}

The file includes: Figure S1

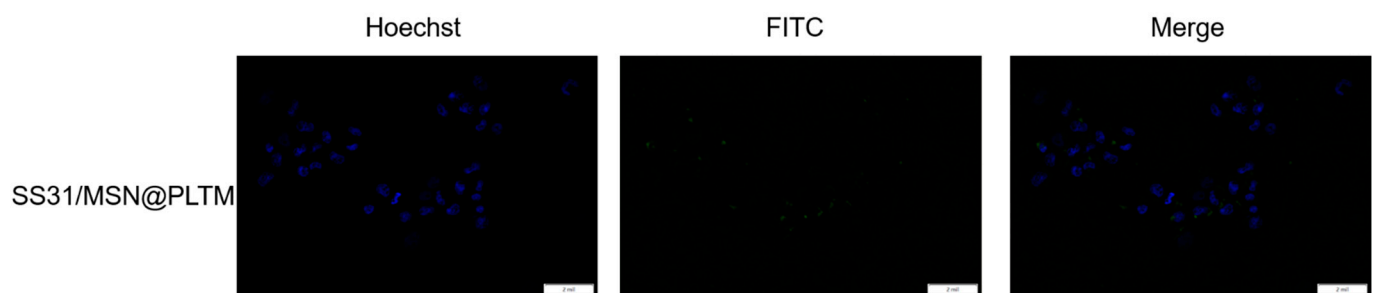


Figure S1. Fluorescence images of RAW 264.7 cells with SS31/MSN@PLTM.