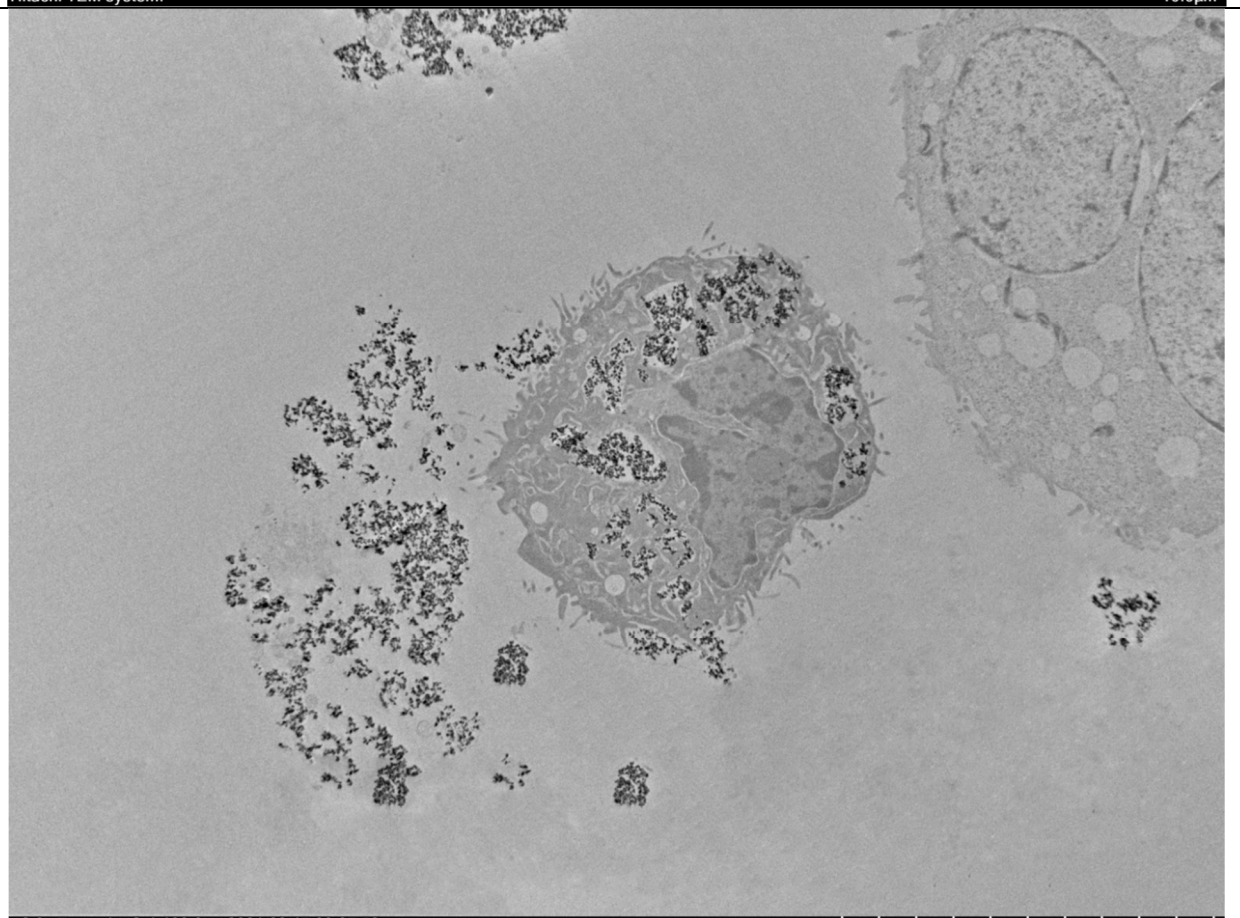


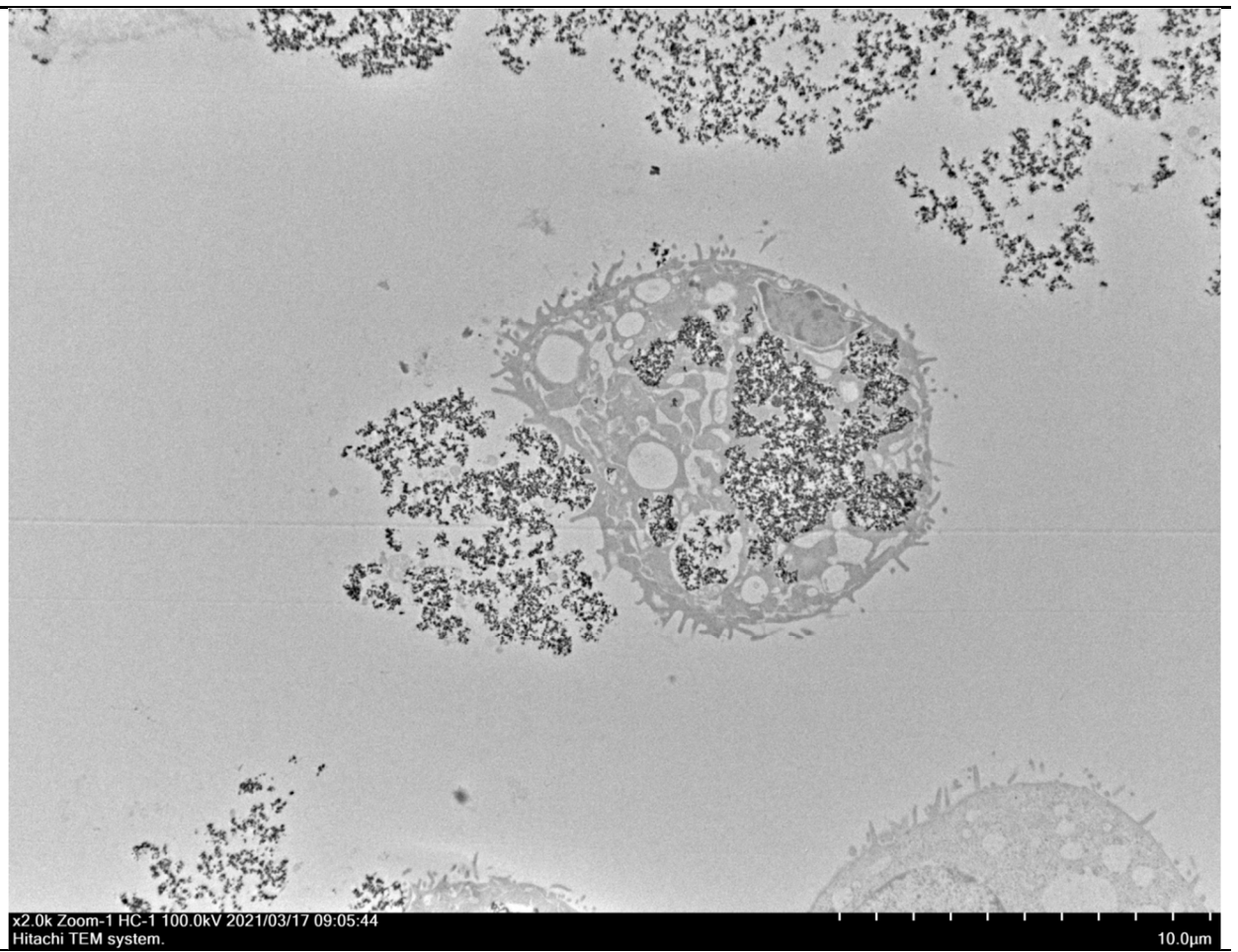
x2.0k Zoom-1 HC-1 100.0kV 2021/03/17 09:01:53
Hitachi TEM system.

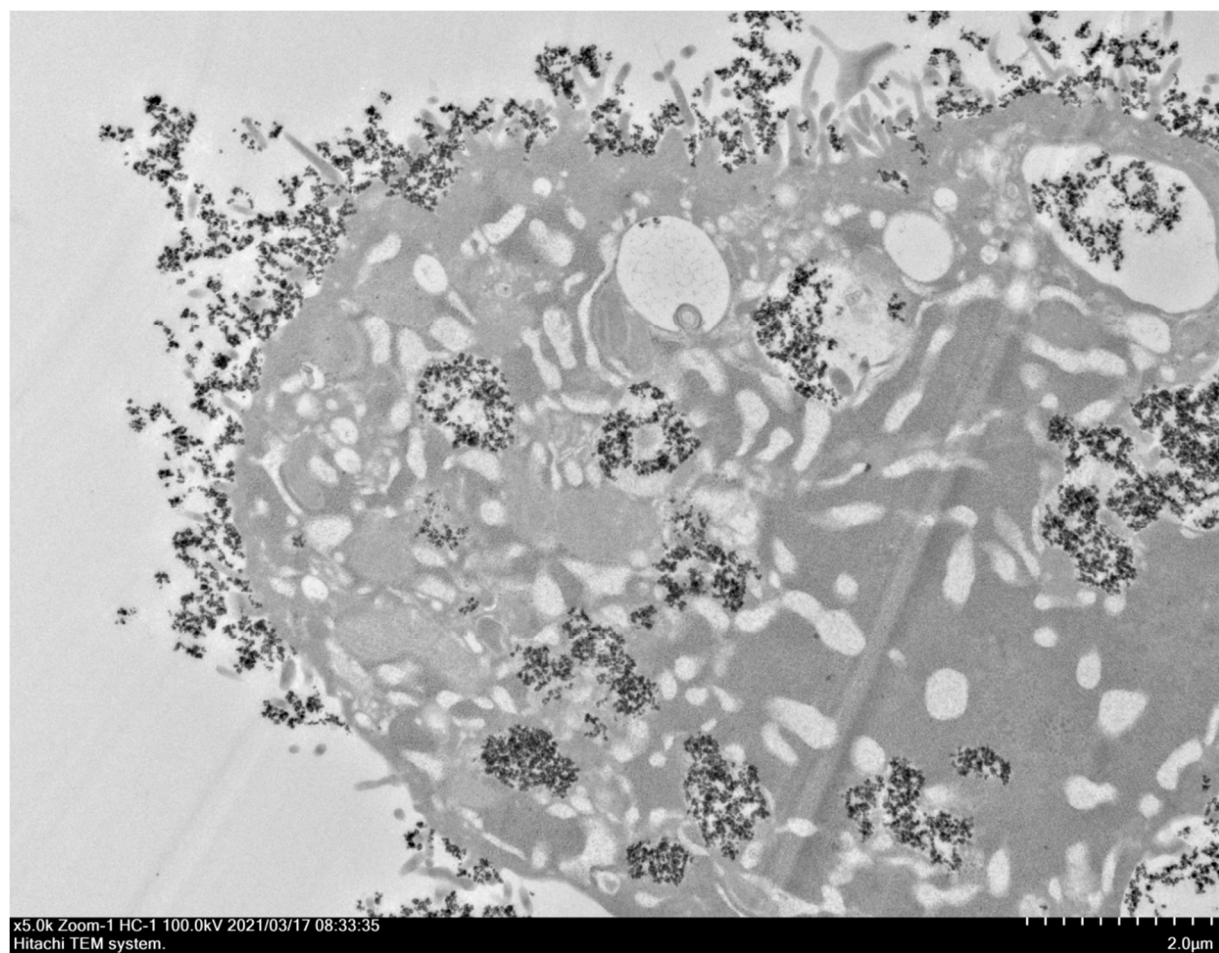
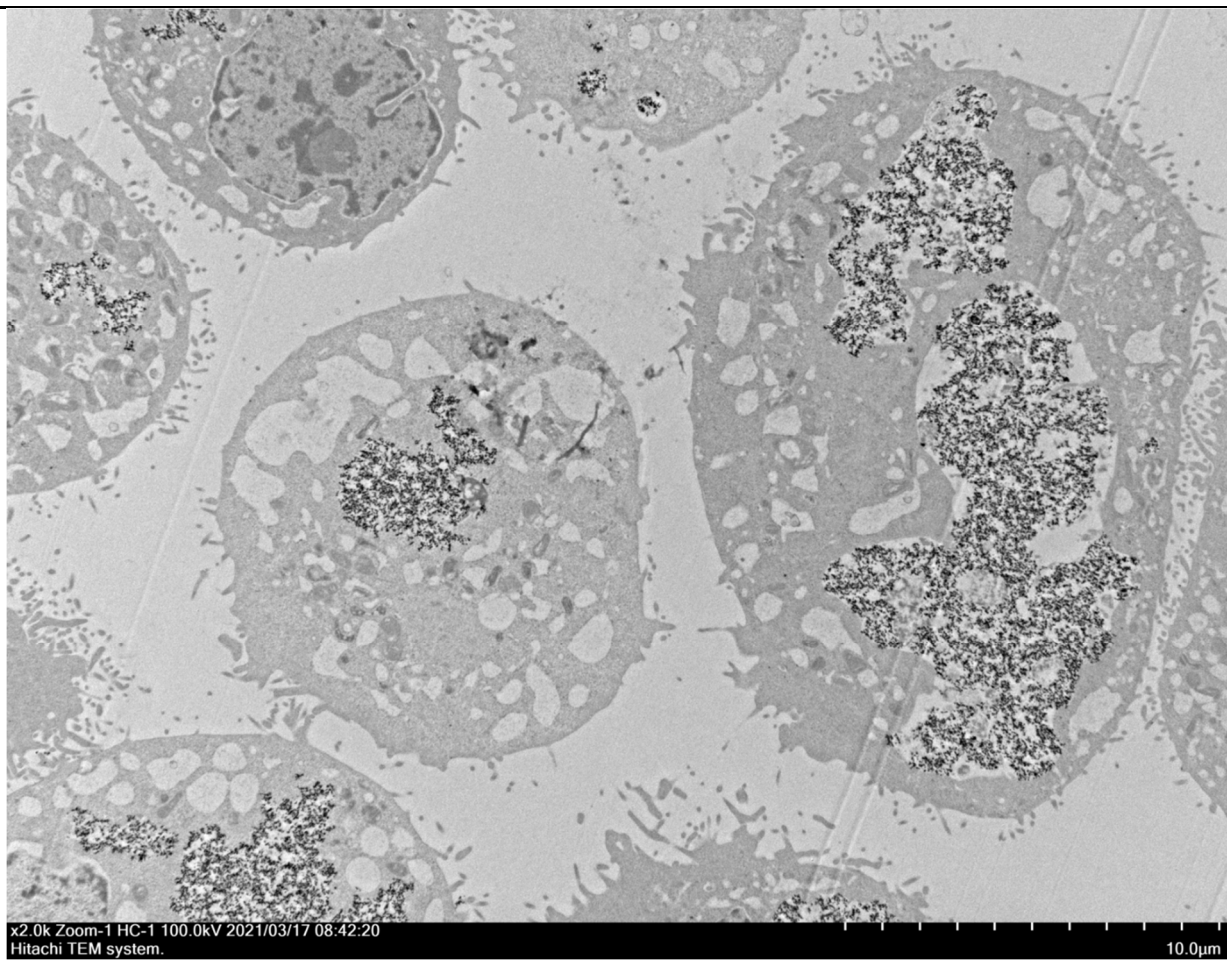
10.0μm



x2.0k Zoom-1 HC-1 100.0kV 2021/03/17 09:07:53
Hitachi TEM system.

10.0μm





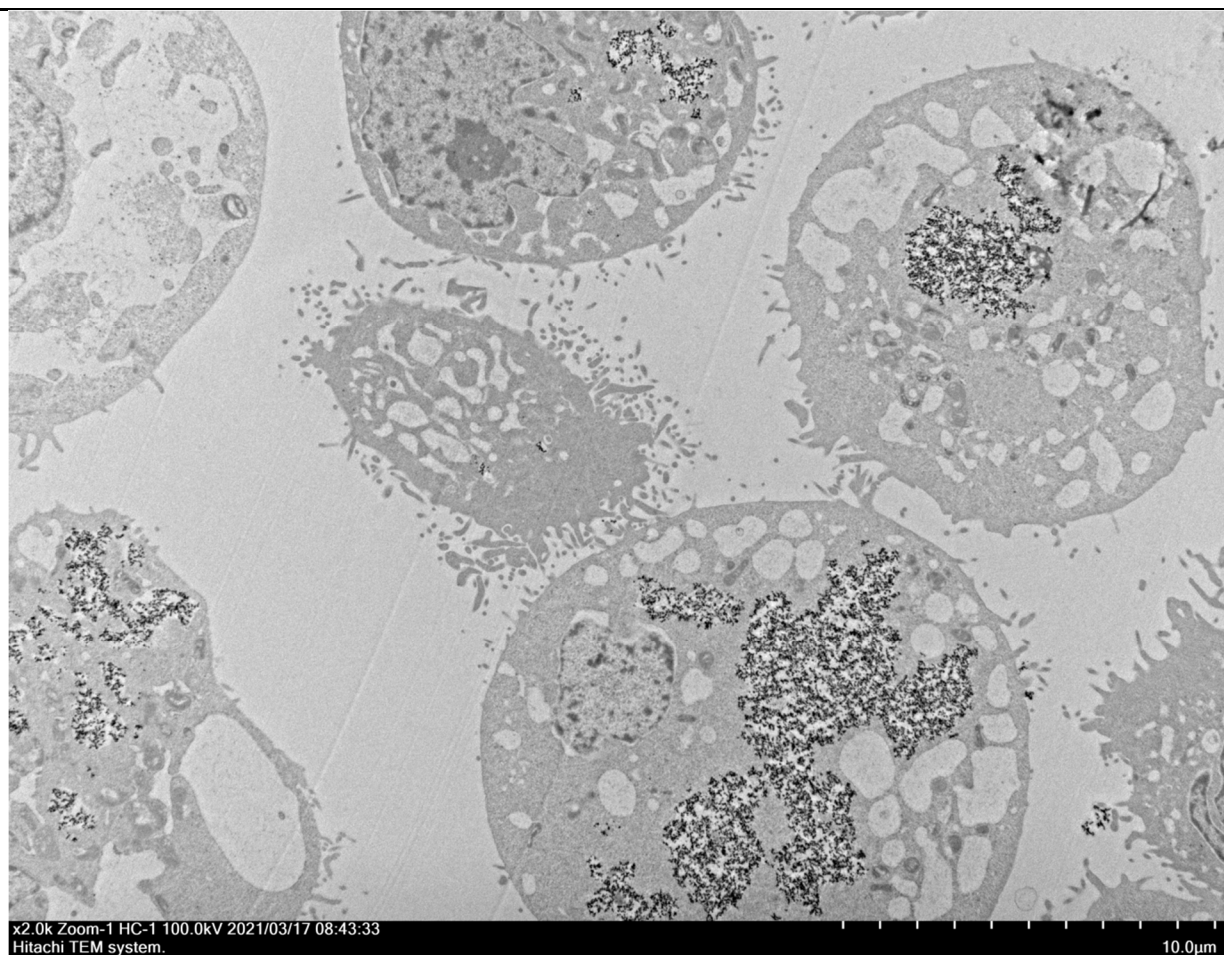


Figure S1. A 549 human lung carcinoma cells treated by polymer-coated nanoparticle composite PEI-NP and TEM images of A 549 cells exposed by the for 2 h incubation