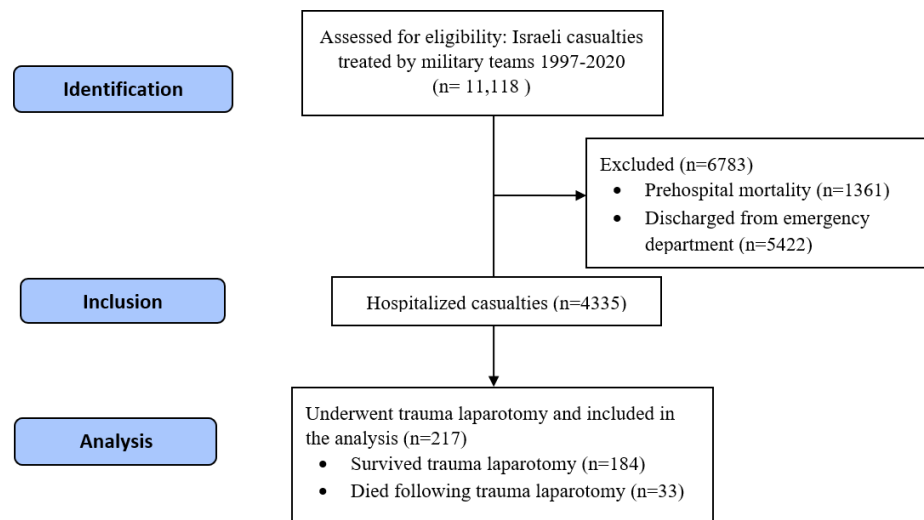


## Supplementary Materials



**Figure S1.** Flow diagram of the study cohort.

**Table S1.** In-hospital and intraoperative procedures.

| Type of Procedure               | ISS 1–14: Light<br>and Moderate<br>(N = 56) | ISS 16+: Severe<br>and Critical<br>(N = 161) | <i>p</i> -Value |
|---------------------------------|---|--|-----------------|
| Blood product transfusion in ED | 2 (4.2%)                                    | 39 (29.8%)                                   | <0.001          |
| Endotracheal intubation in ED   | 4 (7.1%)                                    | 47 (29.2%)                                   | <0.001          |
| Operations                      |   |  |                 |
| Bowel-related                   | 29 (51.8%)                                  | 80 (49.7%)                                   | 0.787           |
| Splenectomy                     | 2 (3.6%)                                    | 35 (21.7%)                                   | 0.002           |
| Hemorrhage control              | 2 (3.6%)                                    | 36 (22.4%)                                   | 0.001           |
| Procedure on diaphragm          | 1 (1.8%)                                    | 18 (11.2%)                                   | 0.032           |
| Hepatobiliary                   | 0   | 21 (13%)                                     | 0.004           |
| Thoracotomy                     | 0   | 26 (16.1%)                                   | 0.001           |
| Orthopedic                      | 2 (3.6%)                                    | 35 (21.7%)                                   | 0.001           |
| Neurosurgery                    | 0   | 13 (8.1%)                                    | 0.028           |
| Urologic surgery                | 1 (1.8%)                                    | 15 (9.3%)                                    | 0.063           |
| Eye procedure                   | 1 (1.8%)                                    | 2 (1.2%)                                     | 0.764           |
| Reoperation rate                | 3 (5.4%)                                    | 34 (21.1%)                                   | 0.007           |

**Table S2.** Casualty characteristics stratified according to time period.

| Characteristic      | 1997–2013<br>(N = 142) | 2014–2020<br>(N = 75) | <i>p</i> -Value |
|---------------------|------------------------|-----------------------|-----------------|
| Sex                 |                        |                       |                 |
| Male                | 11 (7.7%)              | 7 (9.3%)              | 0.687           |
| Female              | 131 (92.3%)            | 68 (90.7%)            |                 |
| Casualty age        |                        |                       |                 |
| Mean (SD)           | 22.1 (5.7)             | 26.7 (11.3)           | <0.001          |
| Median (IQR)        | 20 (19, 22)            | 21 (20, 30)           |                 |
| Casualty population |                        |                       |                 |
| Military            | 109 (76.8%)            | 46 (61.3%)            | 0.017           |
| Civilian            | 33 (23.2%)             | 29 (38.7%)            |                 |
| Injury type         |                        |                       |                 |
| Penetrating         | 78 (54.9%)             | 43 (57.3%)            | 0.735           |
| Non-penetrating     | 64 (45.1%)             | 32 (42.7%)            |                 |
| Prehospital LSI     |                        |                       |                 |
| FDP                 | 0 (0%)                 | 19 (25.3%)            | <0.001          |
| TXA                 | 1 (0.7%)               | 25 (33.3%)            |                 |
| Needle thoracostomy | 6 (4.2%)               | 7 (9.3%)              | 0.132           |
| Chest drain         | 8 (5.6%)               | 3 (4.0%)              | 0.602           |
| Tourniquet          | 3 (2.1%)               | 7 (9.3%)              | 0.016           |
| ED vital signs      |                        |                       |                 |
| Maximum HR, BPM     |                        |                       |                 |
| Median (IQR)        | 103 (84, 120)          | 97.5 (83.75, 120)     | 0.347           |
| Missing             | 6                      | 7                     |                 |
| Minimum SBP, mmHg   |                        |                       |                 |
| Median (IQR)        | 123.5 (99.5, 140.25)   | 124 (101.5, 135.5)    | 0.688           |
| Glasgow coma score  |                        |                       |                 |
| 3–8                 | 36 (26.5%)             | 19 (26.4%)            | 0.314           |
| 9–14                | 6 (4.4%)               | 7 (9.7%)              |                 |
| 15                  | 94 (69.1%)             | 46 (63.9%)            |                 |
| ISS                 |                        |                       | 0.197           |

|           |            |            |       |
|-----------|------------|------------|-------|
| 1–8       | 13 (9.2%)  | 7 (9.3%)   |       |
| 9–14      | 26 (18.3%) | 10 (13.3%) |       |
| 16–24     | 29 (20.4%) | 25 (33.3%) |       |
| ≥25       | 74 (52.1%) | 33 (44.0%) |       |
| Mortality | 21 (14.8%) | 12 (16.0%) | 0.813 |

SD—standard deviation, IQR—interquartile range, LSI—life-saving intervention, FDP—freeze-dried plasma TXA—tranexamic acid, ETI—endotracheal intubation, AIS—Abbreviated Injury Scale, ED—emergency department, HR—heart rate, BPM—beats per minute, SBP—systolic blood pressure, ISS—injury severity score.