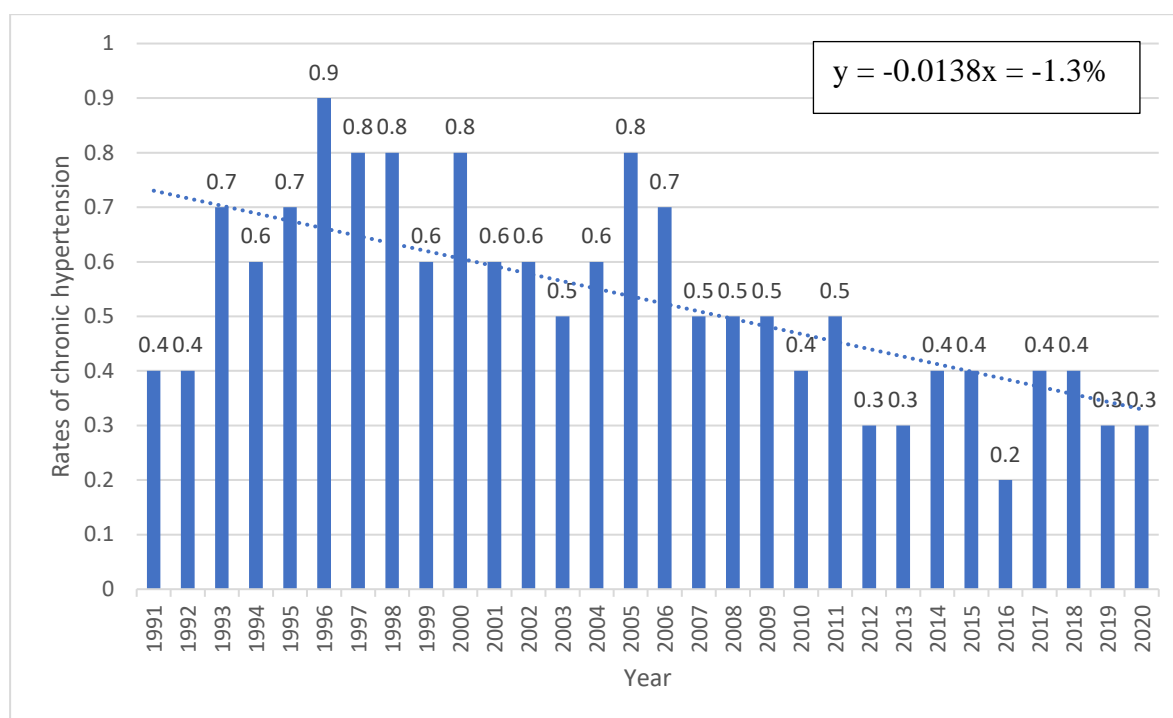


**Figure S1.** Flow chart for the inclusion and exclusion criteria of the study population.

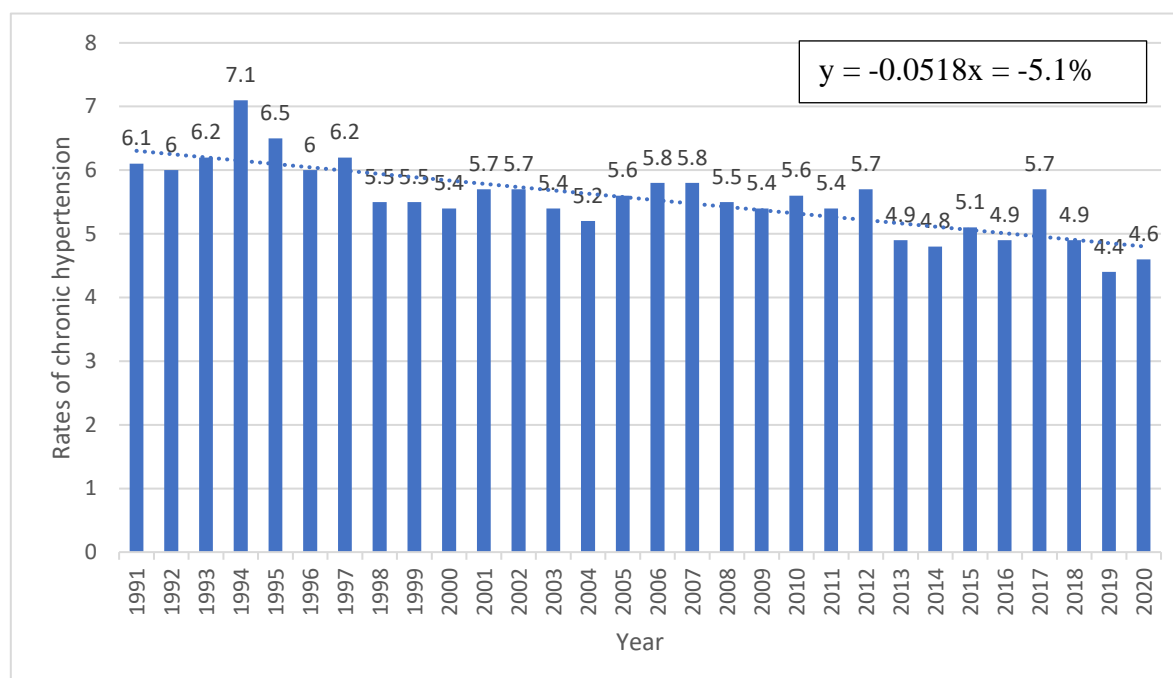
The following figures represent the annual trends of selected placenta-mediated outcomes investigated in this study:

Figure S2 presents annual rates of placental abruption among the group of women with chronic hypertension. During the study period, an average annual decrease of -1.3% was noted.



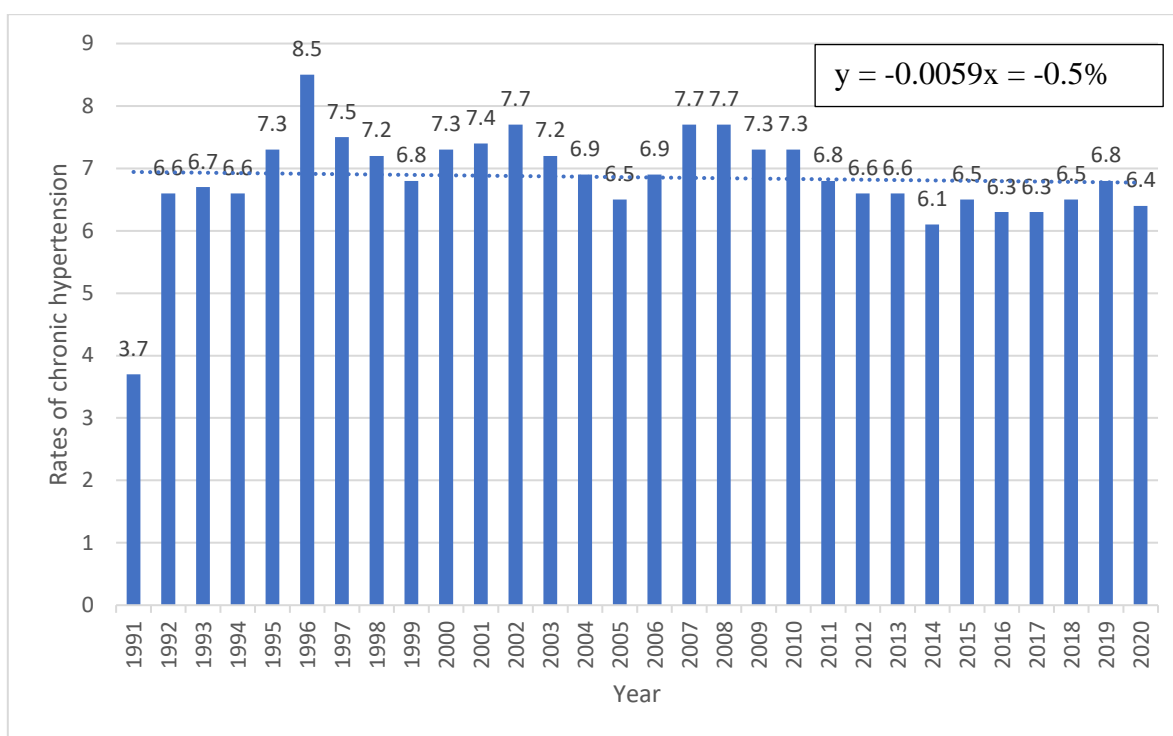
**Figure S2.** Rates of placental abruption (% of study population per year).

Figure S3 presents annual rates of fetal growth restriction among the group of women with chronic hypertension. During the study period, an average annual decrease of -5.1% was noted.



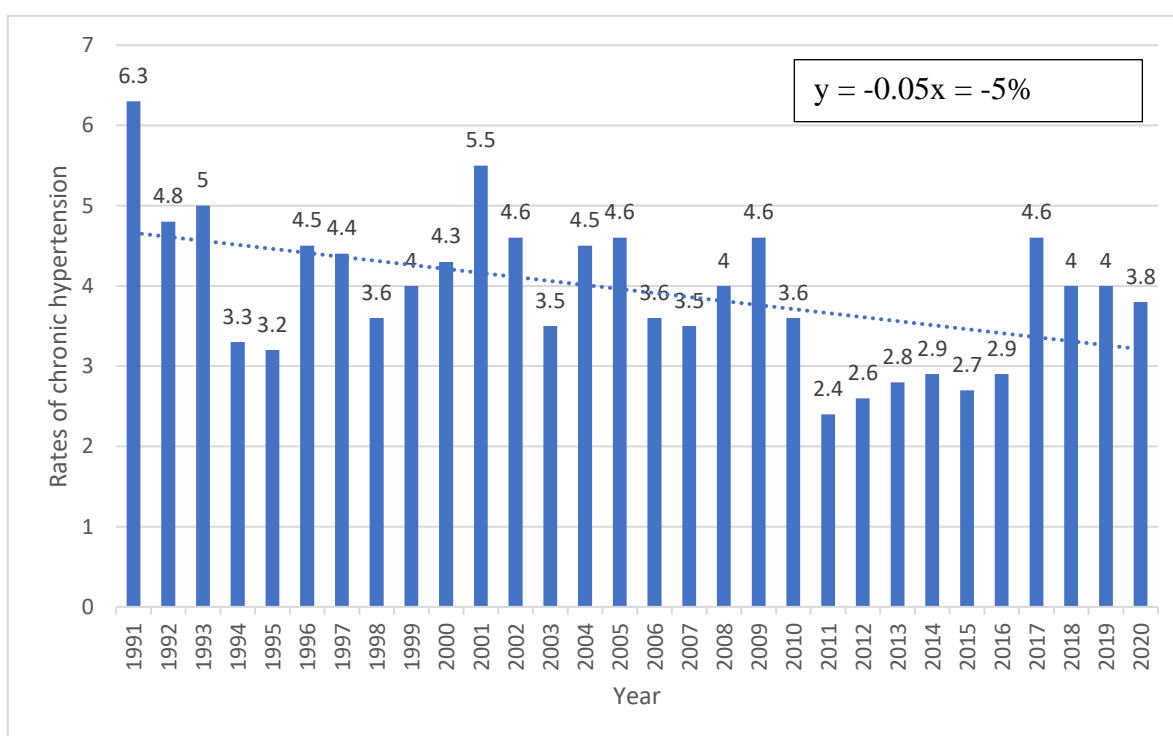
**Figure S3.** Rates of fetal growth restriction (% of study population per year).

Figure S4 presents annual rates of preterm delivery among the group of women with chronic hypertension. During the study period, an average annual decrease of -0.5% was noted.



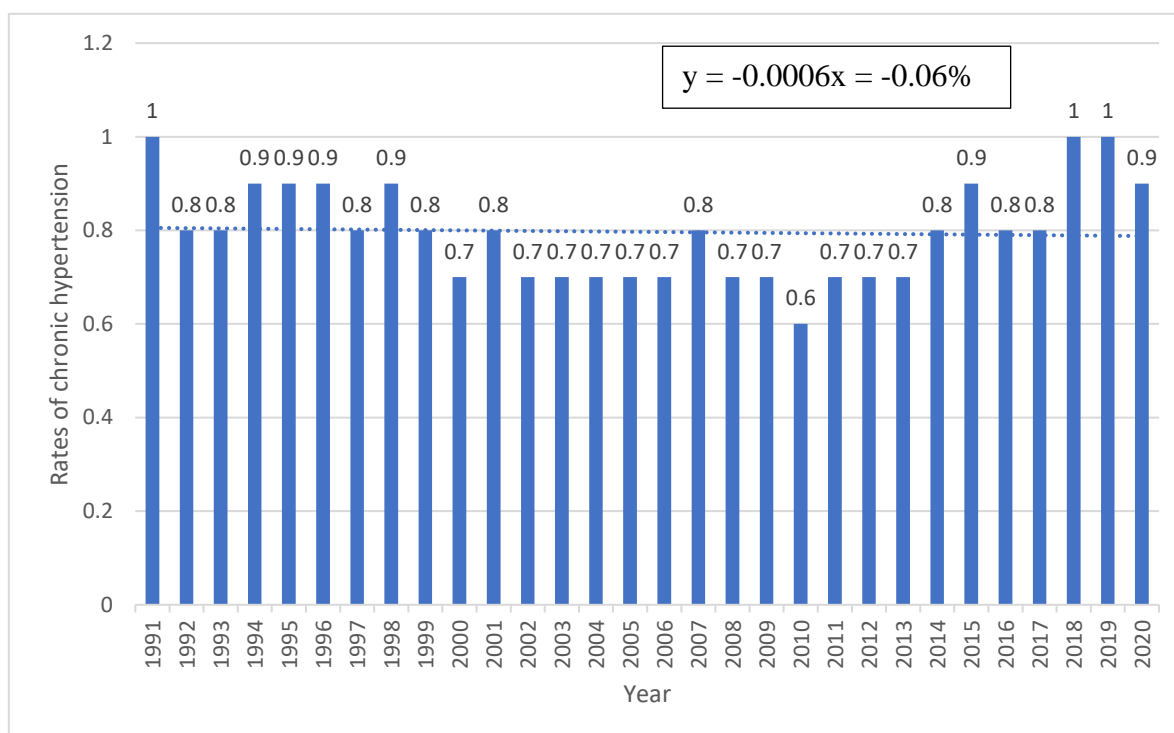
**Figure S4.** Rates of preterm delivery (% of study population per year).

Figure S5 presents annual rates of preeclampsia among the group of women with chronic hypertension. During the study period, an average annual decrease of -5% was noted.



**Figure S5.** Rates of preeclampsia (% of study population per year).

Figure S6 presents annual rates of perinatal mortality among the group of women with chronic hypertension. During the study period, an average annual decrease of -0.06% was noted.



**Figure S6.** Rates of perinatal mortality (% of study population per year).