

Figure S1. Gating strategy for patient bone marrow using a 3-color antibody cocktail. Cells were selected from debris using forward (FSC) and side (SSC) scatter. Singlets were gated on twice, using both SSC and FSC. The CD45⁺ population was gated on and then from that population, either HSAN⁺ or 459⁺ cells were identified. From each subsequent gate (either CD45/HSAN⁺ or CD45/459⁺) GD2⁺ cells were gated on.

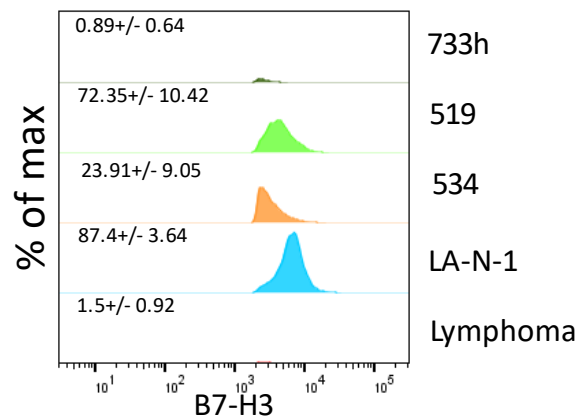


Figure S2. B7-H3 staining profile in neuroblastoma panel. B7-H3 surface staining was assessed on a panel of four neuroblastoma cell lines in addition to the B cell lymphoma negative control. Average % positive from three replicates shown as numbers +/- standard deviation.