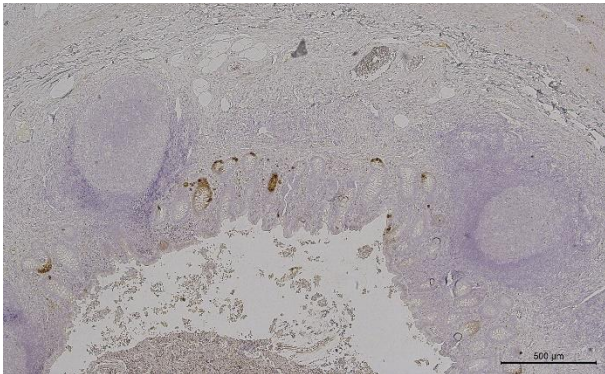
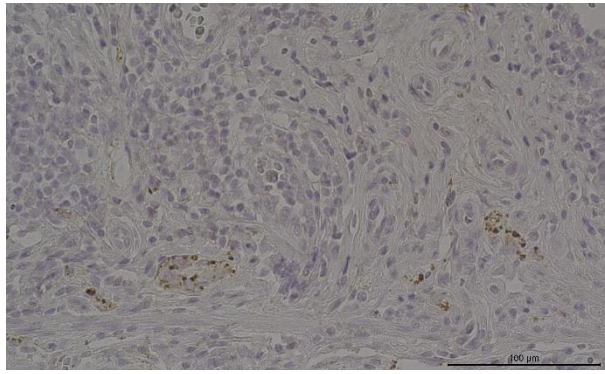


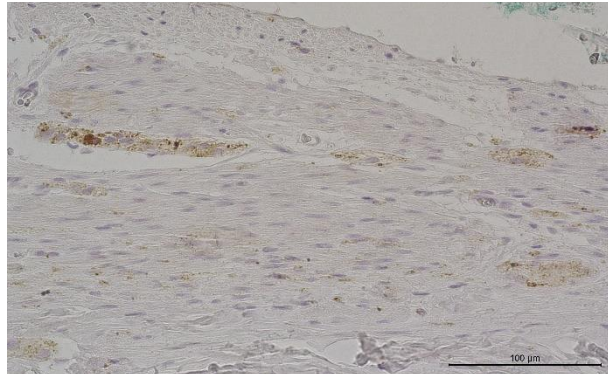
CgA x5, Appendix wall



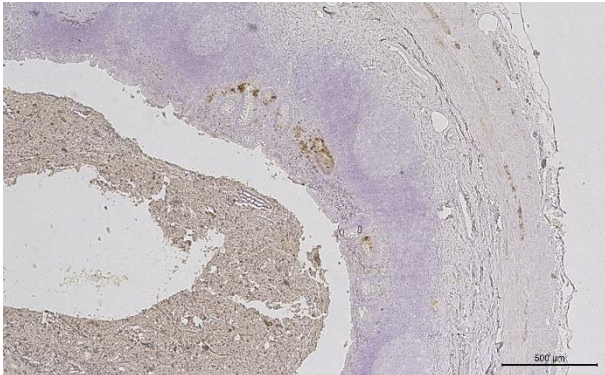
CgA x40, Submucous layer



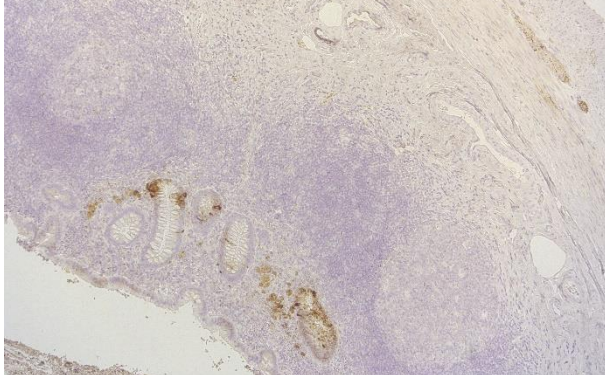
CgA x40, Muscular layer



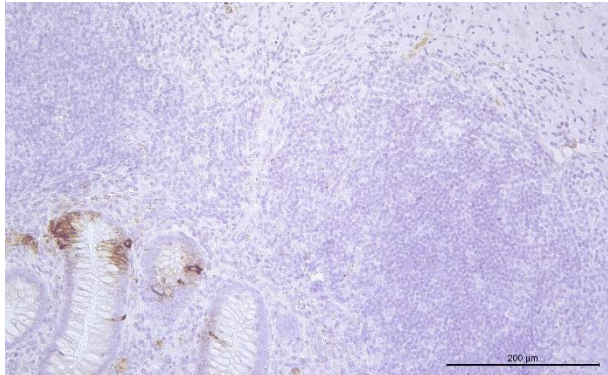
CgA x5, Appendix wall



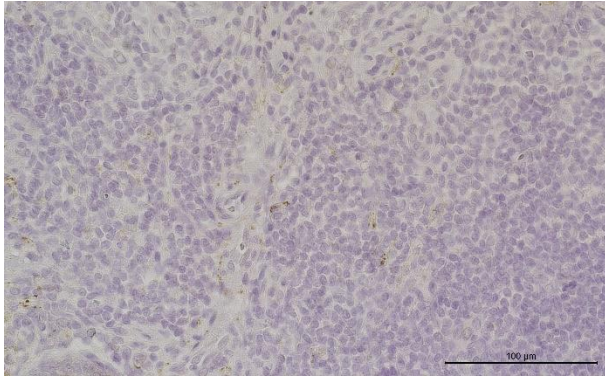
CgA x10, Appendix wall



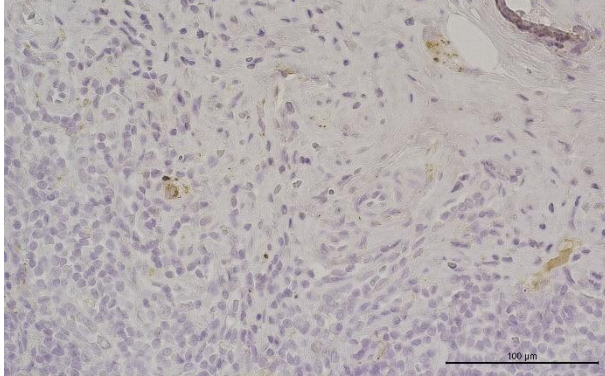
CgA x20, Mucous layer



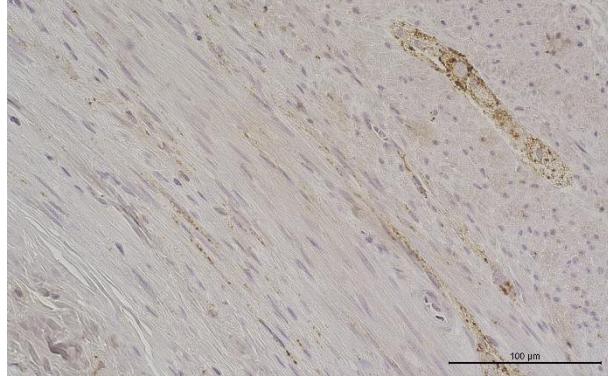
CgA x40, Mucous layer



CgA x40, Mucous layer



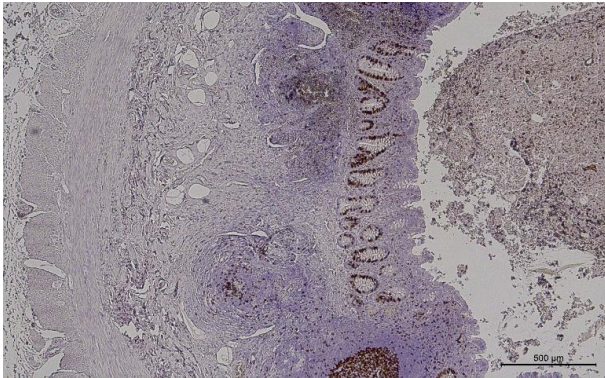
CgA x40, Muscular layer



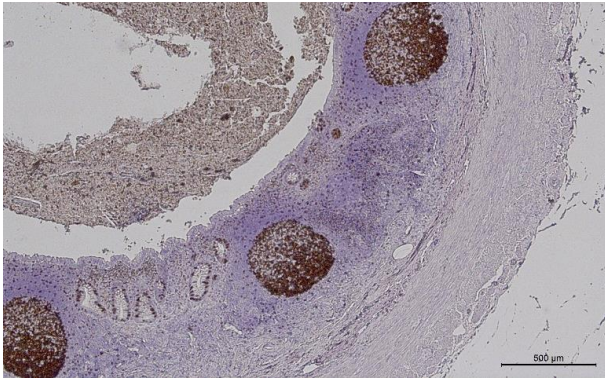
Supplementary data: Representative figures of patient's diagnostic panel. Sample numbers have been coded.

N2XXXXX_6_4_Ki-67

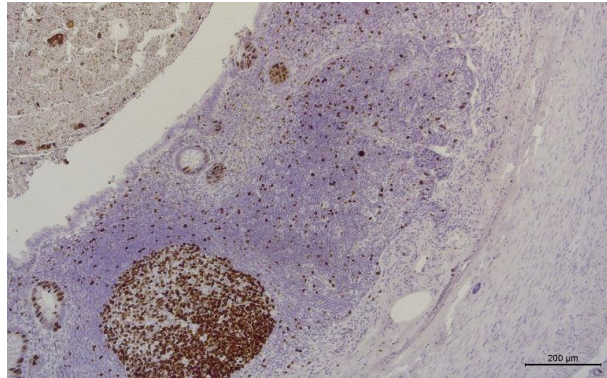
Ki-67 x5, Appendix wall



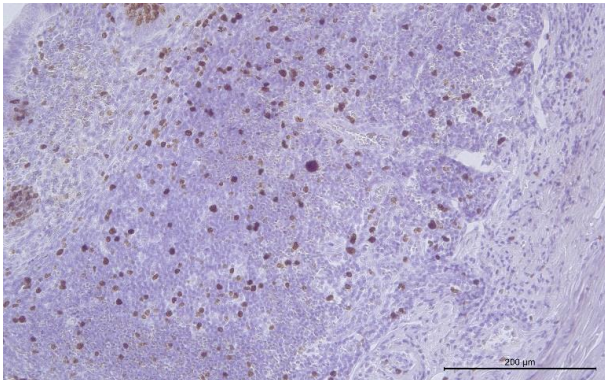
Ki-67 x5, Appendix wall



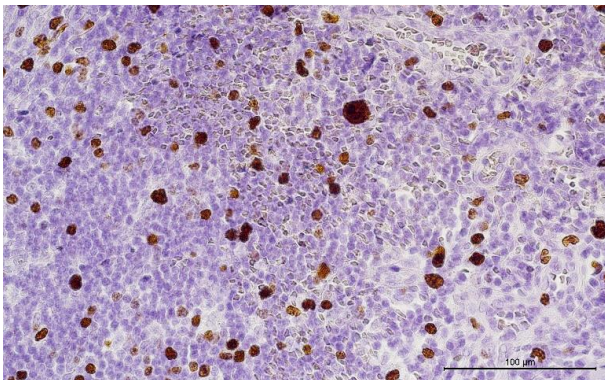
Ki-67 x10, Appendix wall



Ki-67 x20, Appendix wall

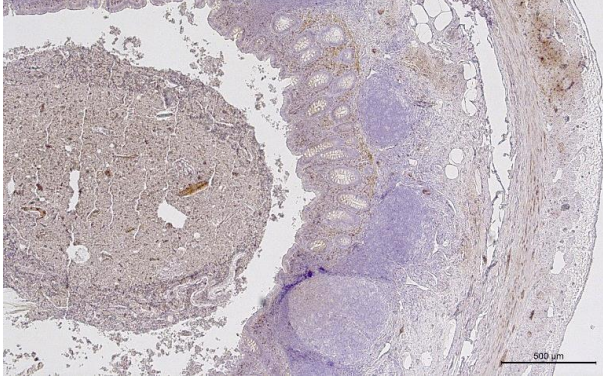


Ki-67 x40, Mucous layer

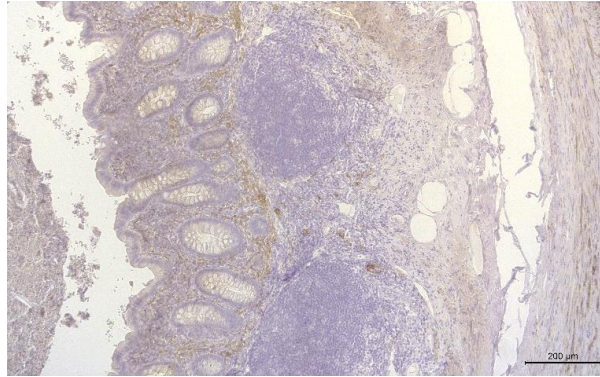


Supplementary data: Representative figures of patient’s diagnostic panel. Sample numbers have been coded.
Magnification of the lens is given, Leica DM5000B, Wetzlar, Germany.

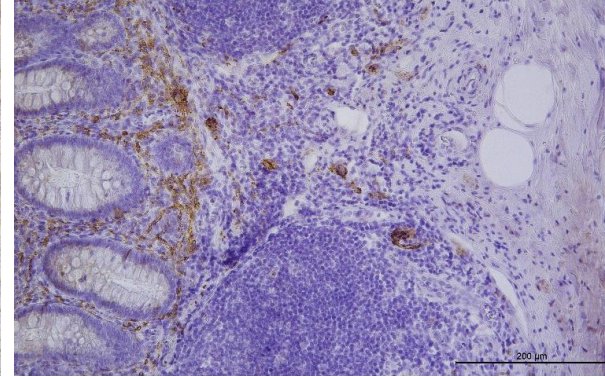
Syn x5, Appendix wall



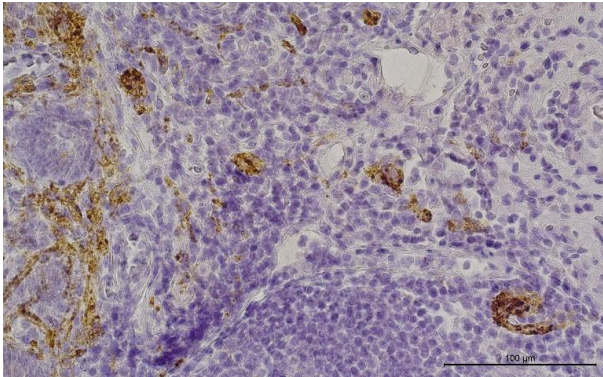
Syn x10, Appendix wall



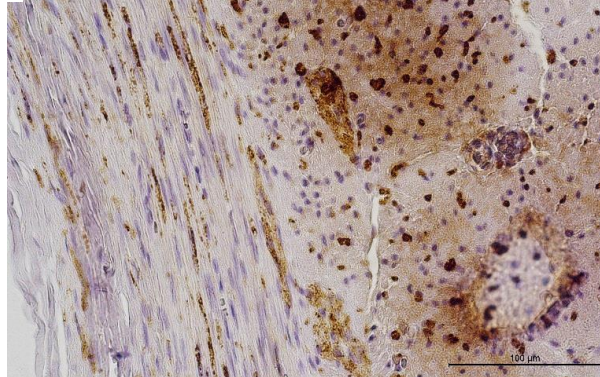
Syn x20, Appendix wall



Syn x40, Mucous and submucous



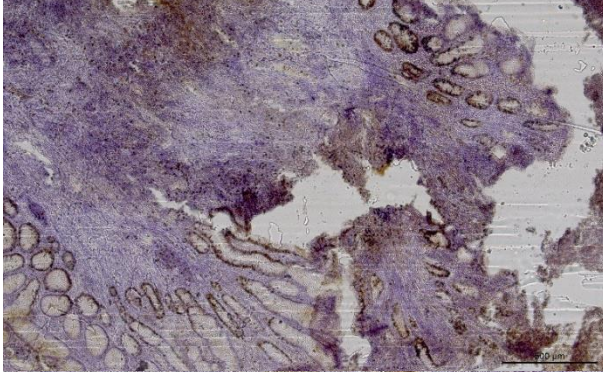
Syn x40, Muscular layer



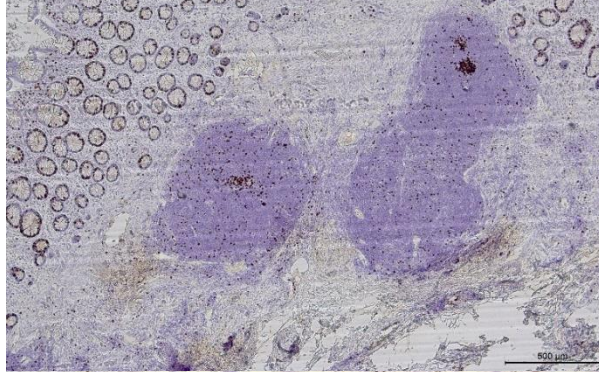
Supplementary data: Representative figures of patient's diagnostic panel. Sample numbers have been coded.
Magnification of the lens is given, Leica DM5000B, Wetzlar, Germany.

N5XXXX_6_3_Ki67

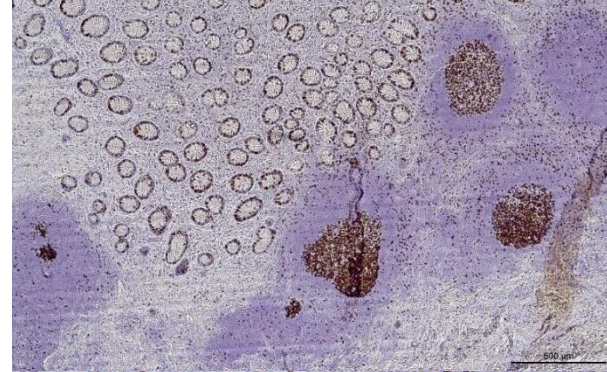
Ki67 x5, Appendix wall



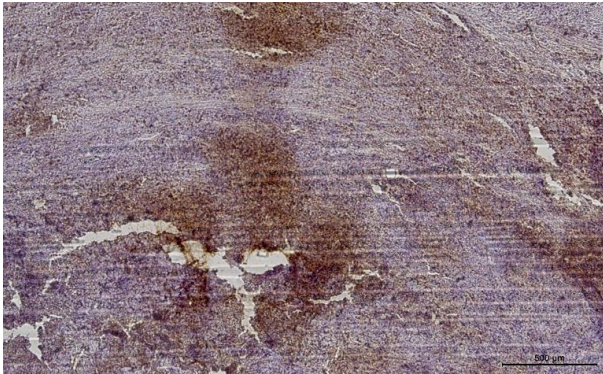
Ki67 x5, Appendix wall



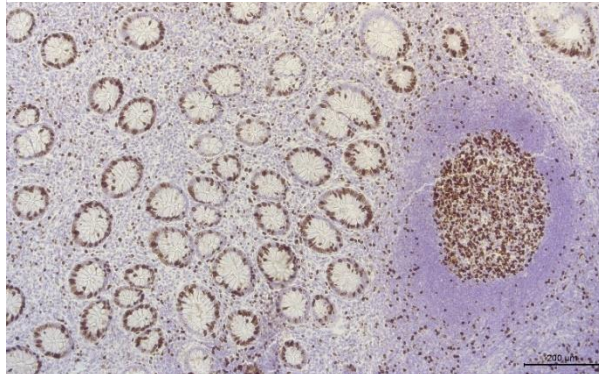
Ki67 x5, Appendix wall



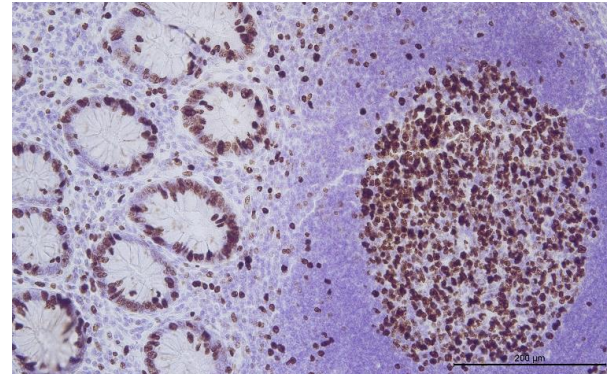
Ki67 x5, Appendix wall



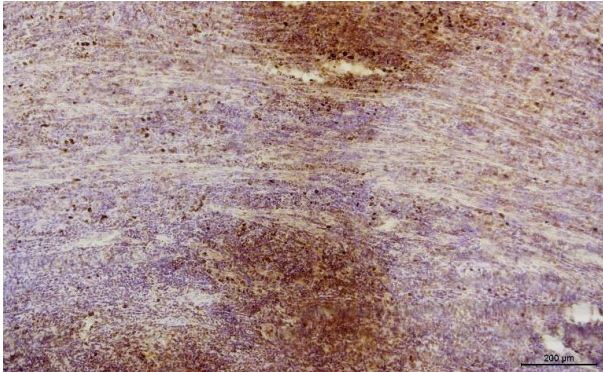
Ki67 x10, Appendix wall



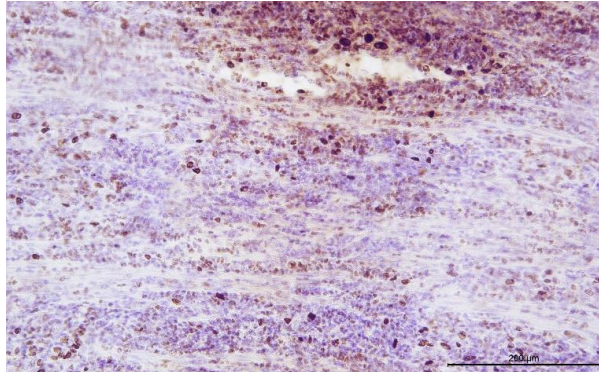
Ki67 x10, Appendix wall



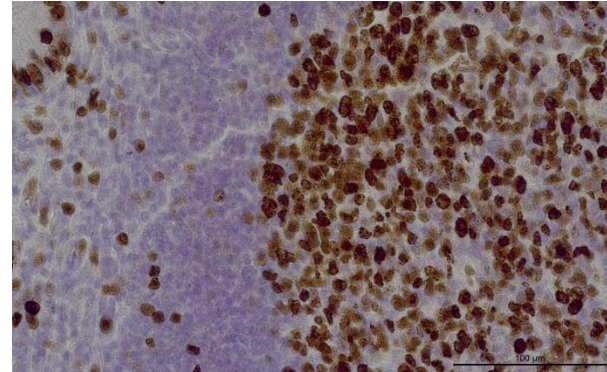
Ki67 x10, Appendix wall



Ki67 x20, Appendix wall



Ki67 x40, Mucous layer

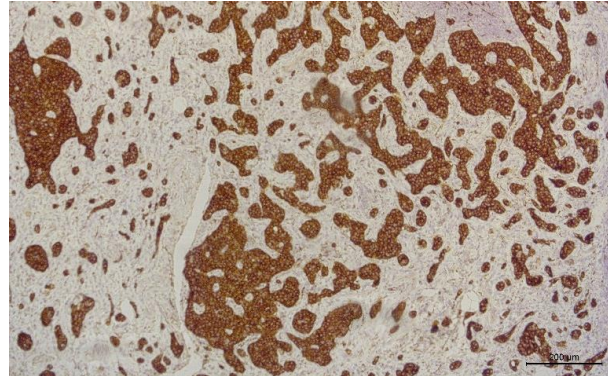


Supplementary data: Representative figures of patient's diagnostic panel. Sample numbers have been coded.

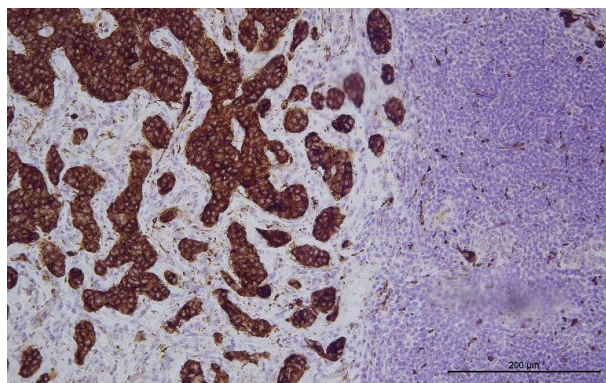
Syn x5, Appendix wall



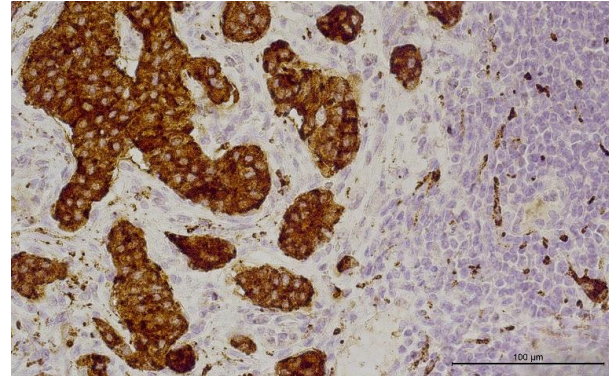
Syn x10, Appendix wall



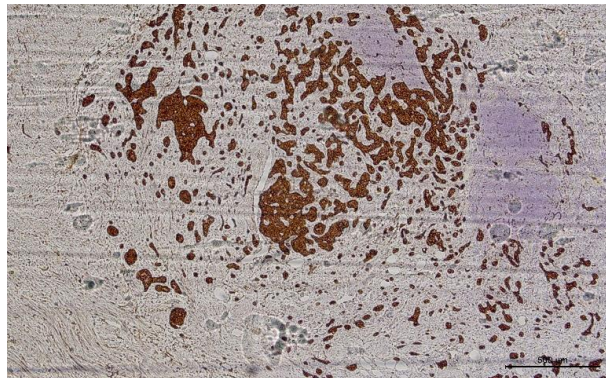
Syn x20, Mucous layer



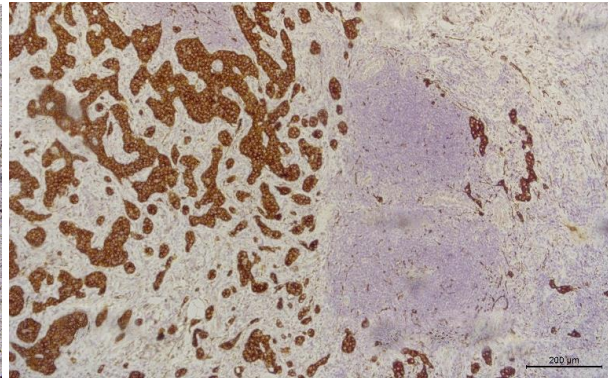
Syn x40, Mucous layer



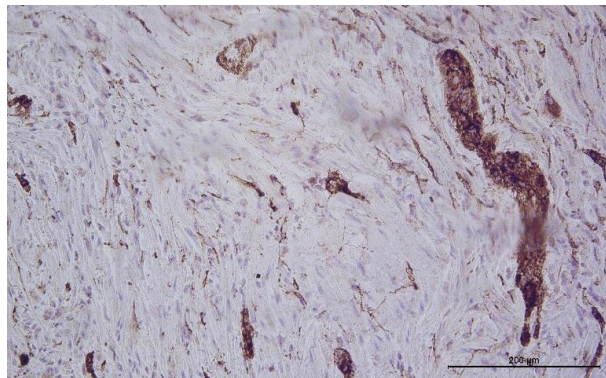
Syn x5, Appendix wall



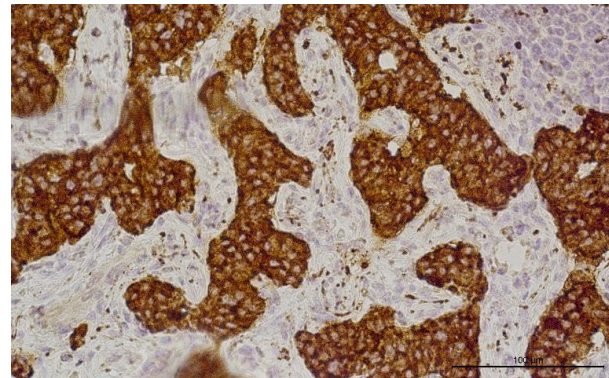
Syn x10, Appendix wall



Syn x20, Mucous layer



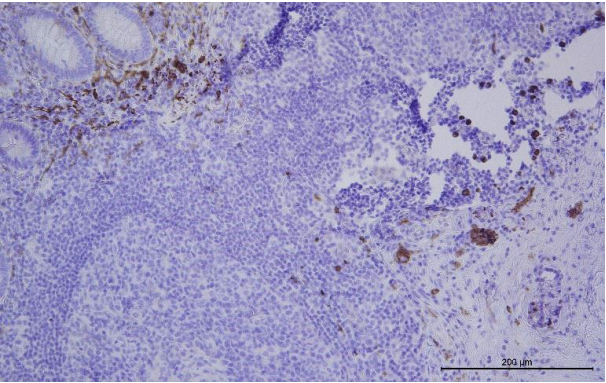
Syn x40, Mucous layer



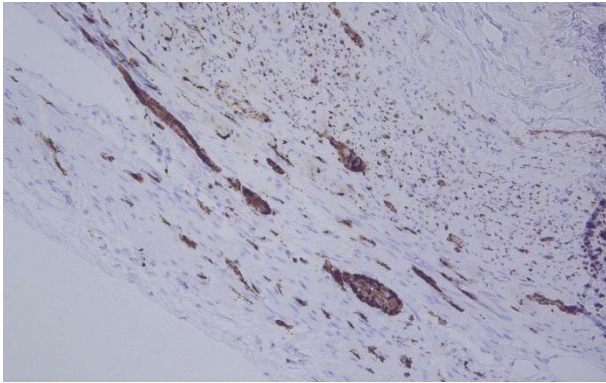
Supplementary data: Representative figures of patient's diagnostic panel. Sample numbers have been coded.
Magnification of the lens is given, Leica DM5000B, Wetzlar, Germany.

N3XXXX_6_2_Synaptophysin

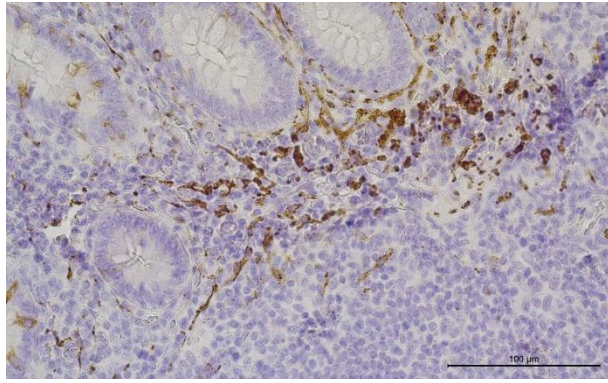
Syn x20, Mucous and submucous



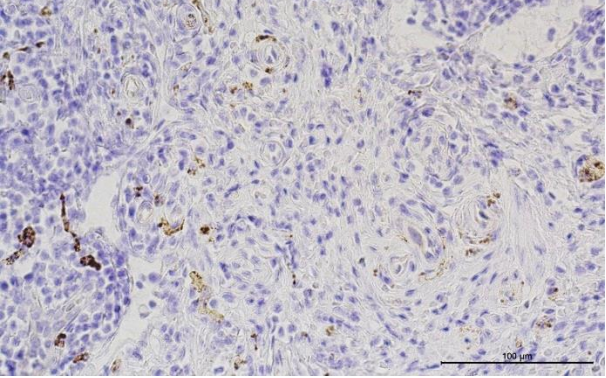
Syn x20, Muscular layer



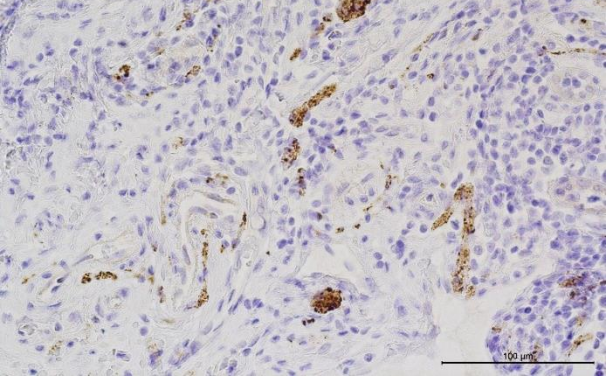
Syn x40, Mucous layer



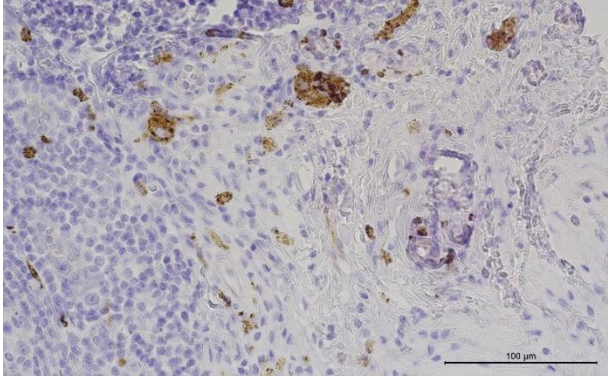
Syn x40, Mucous layer



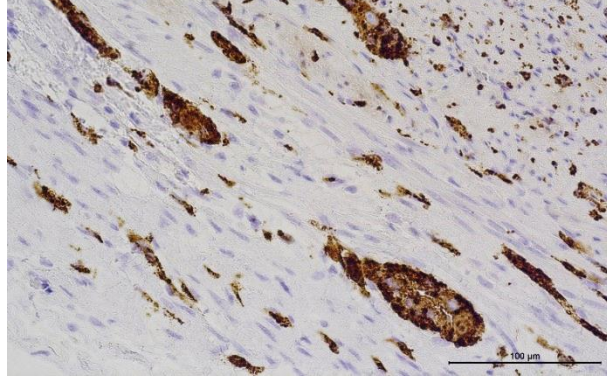
Syn x40, Mucous layer



Syn x40, Mucous layer

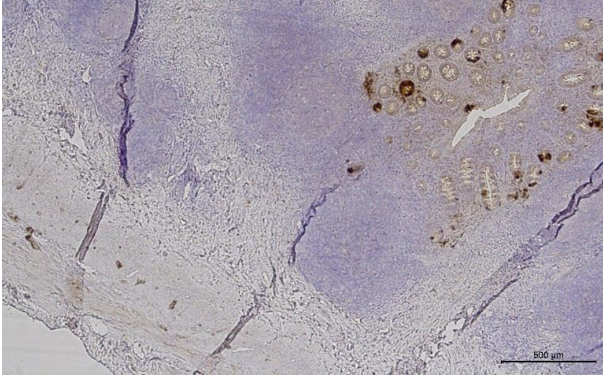


Syn x40, Muscular layer

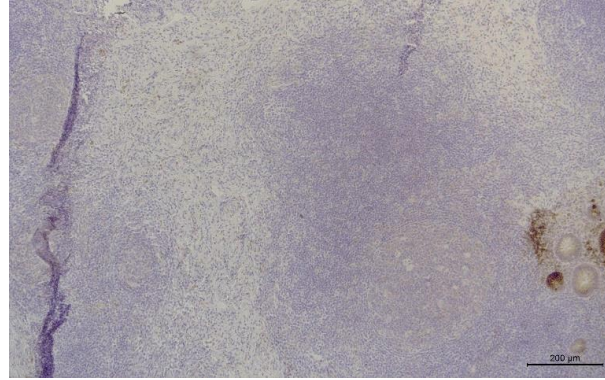


Supplementary data: Representative figures of patient's diagnostic panel. Sample numbers have been coded.
Magnification of the lens is given, Leica DM5000B, Wetzlar, Germany.

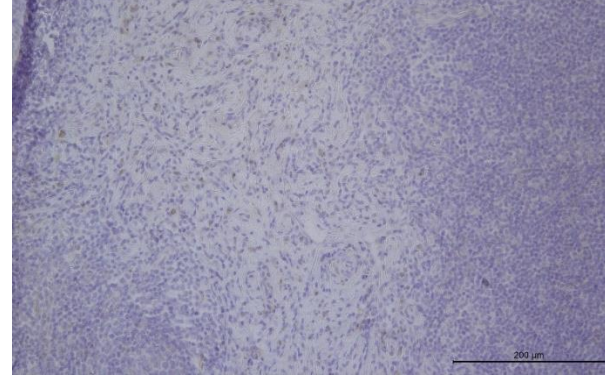
CgA x5, Submucous layer



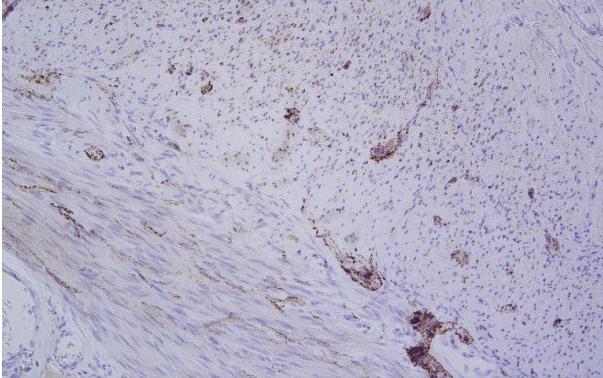
CgA x10, Submucous layer



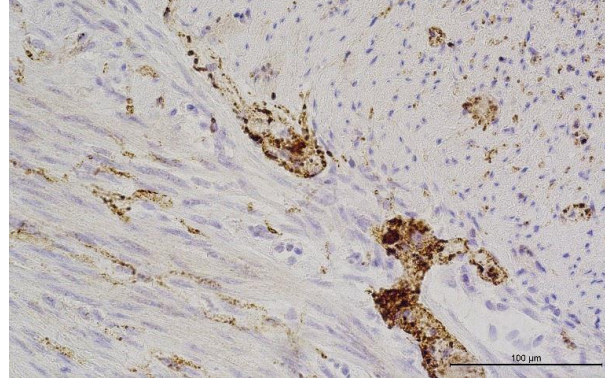
CgA x20, Submucous layer



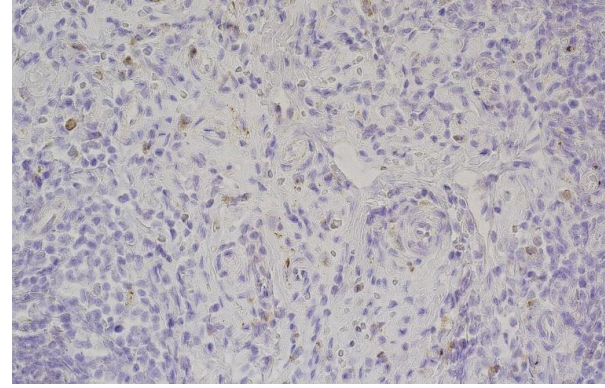
CgA x20, Muscular layer



CgA x40, Muscular layer

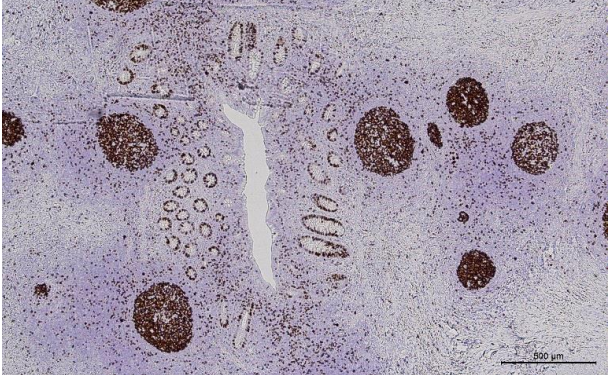


CgA x40, Submucous layer

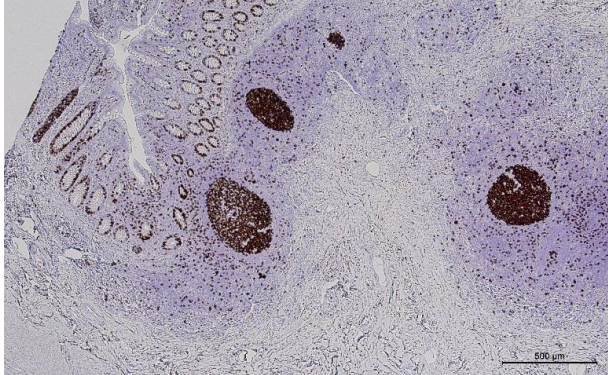


Supplementary data: Representative figures of patient's diagnostic panel. Sample numbers have been coded.
Magnification of the lens is given, Leica DM5000B, Wetzlar, Germany.

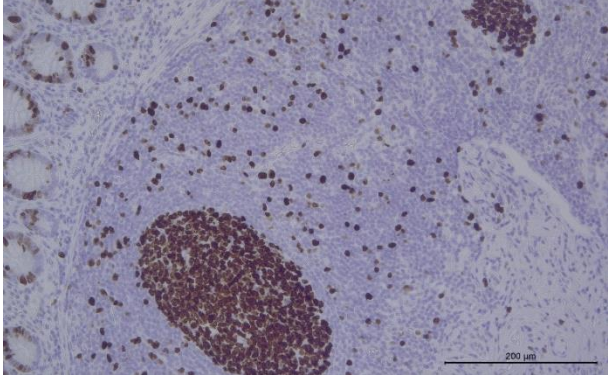
Ki-67 x5, Appendix wall



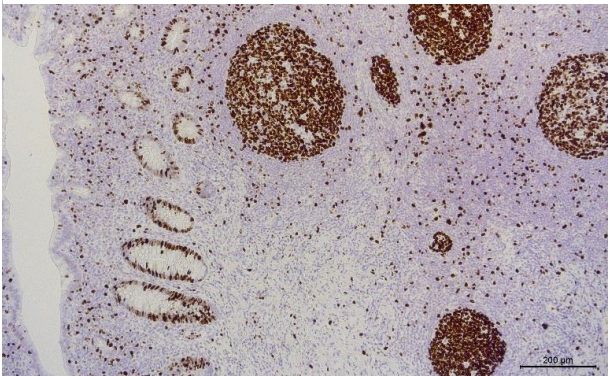
Ki-67 x10, Appendix wall



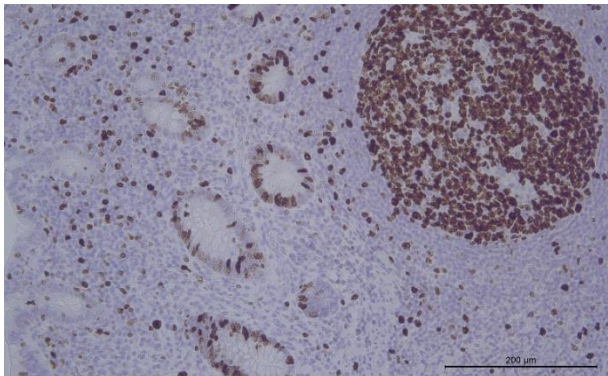
Ki-67 x20, Submucous layer



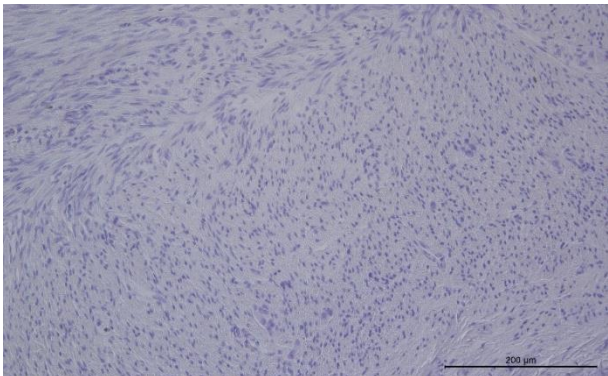
Ki-67 x5, Appendix wall



Ki-67 x20, Submucous layer



Ki-67 x20, Muscular layer



Supplementary data: Representative figures of patient's diagnostic panel. Sample numbers have been coded.
Magnification of the lens is given, Leica DM5000B, Wetzlar, Germany.