

Figure S1. Distribution of the FIB-4 parameter at baseline, end of treatment (EOT), and 1, 2, and 4 years following sustained virologic response (SVR) in kidney transplant recipients.

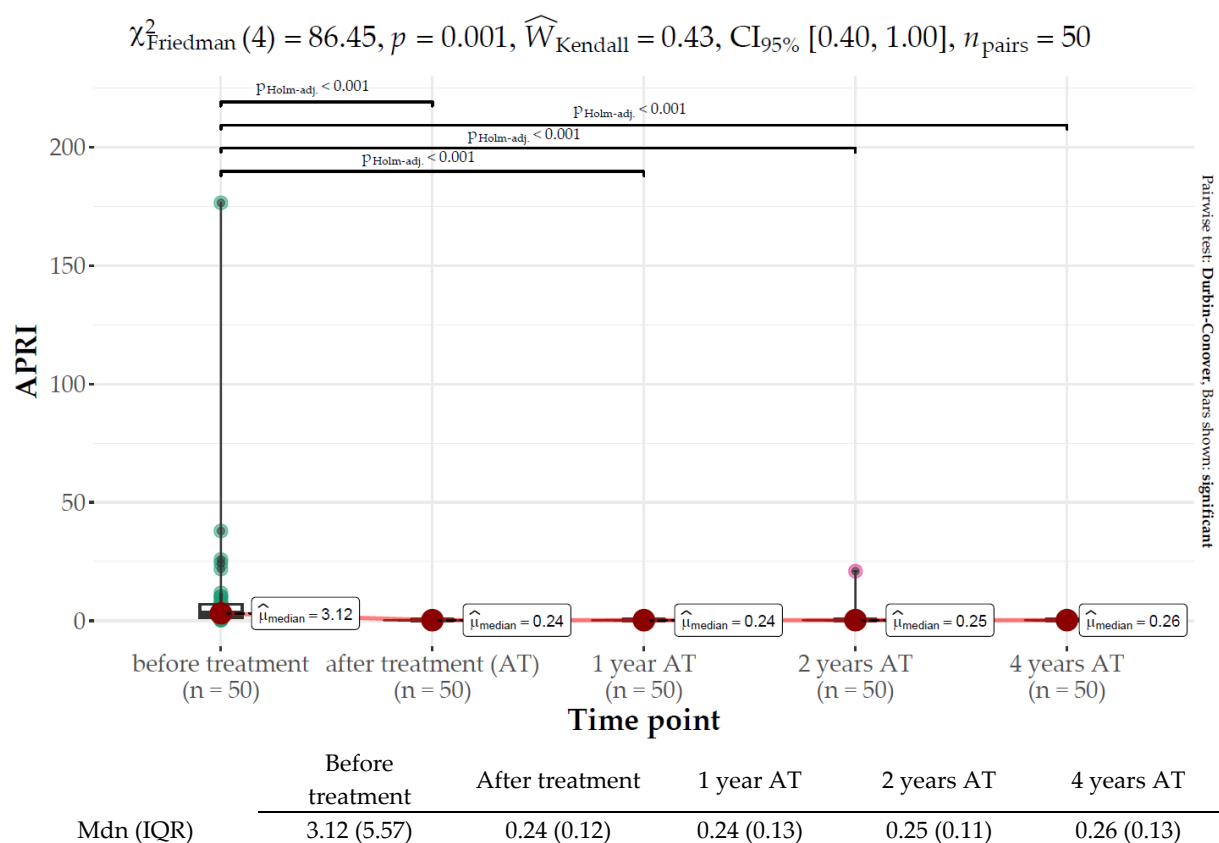


Figure S2. Distribution of APRI parameter at baseline, end of treatment (EOT), and 1, 2, and 4 years following sustained virologic response (SVR) in kidney transplant recipients.

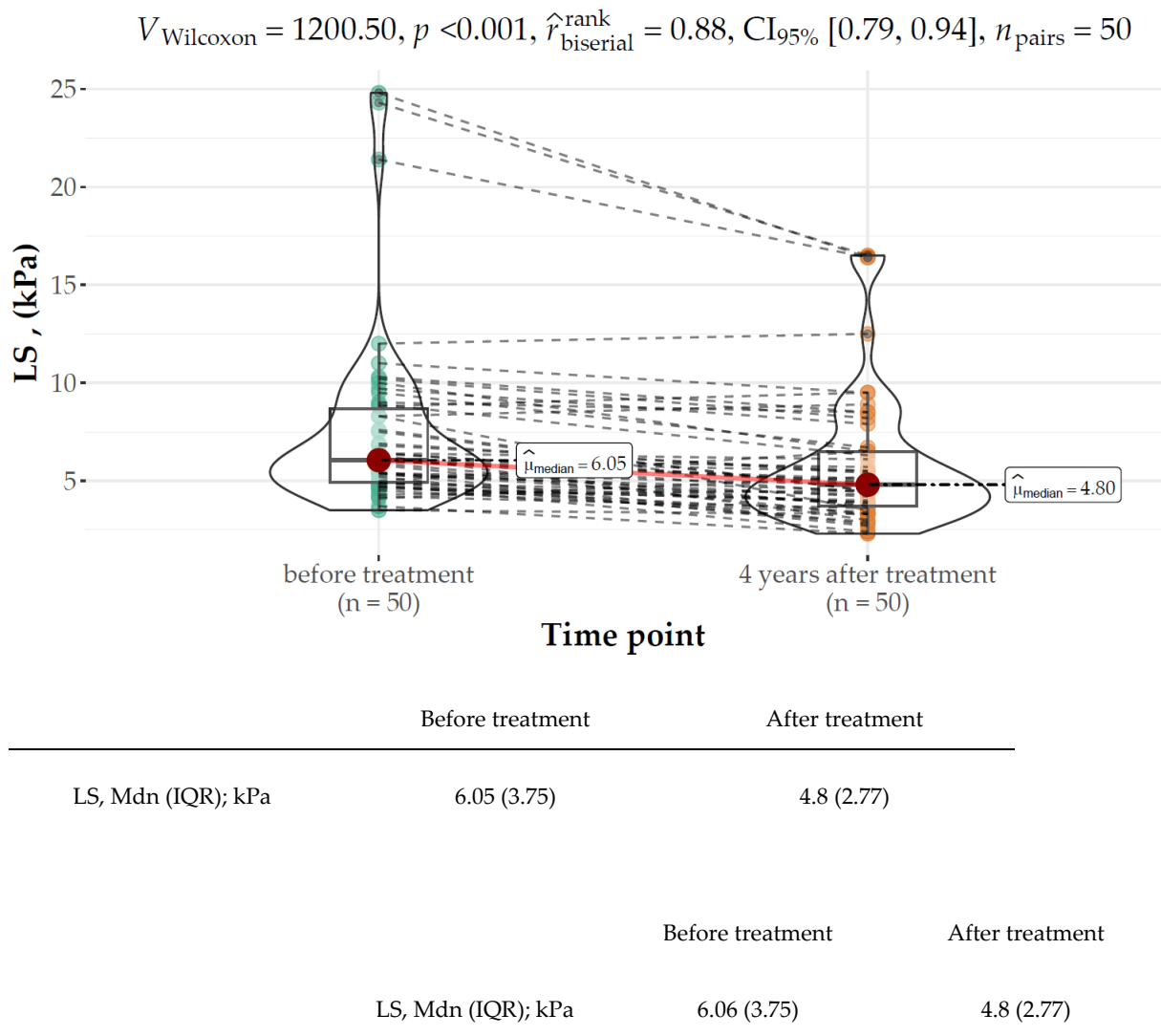
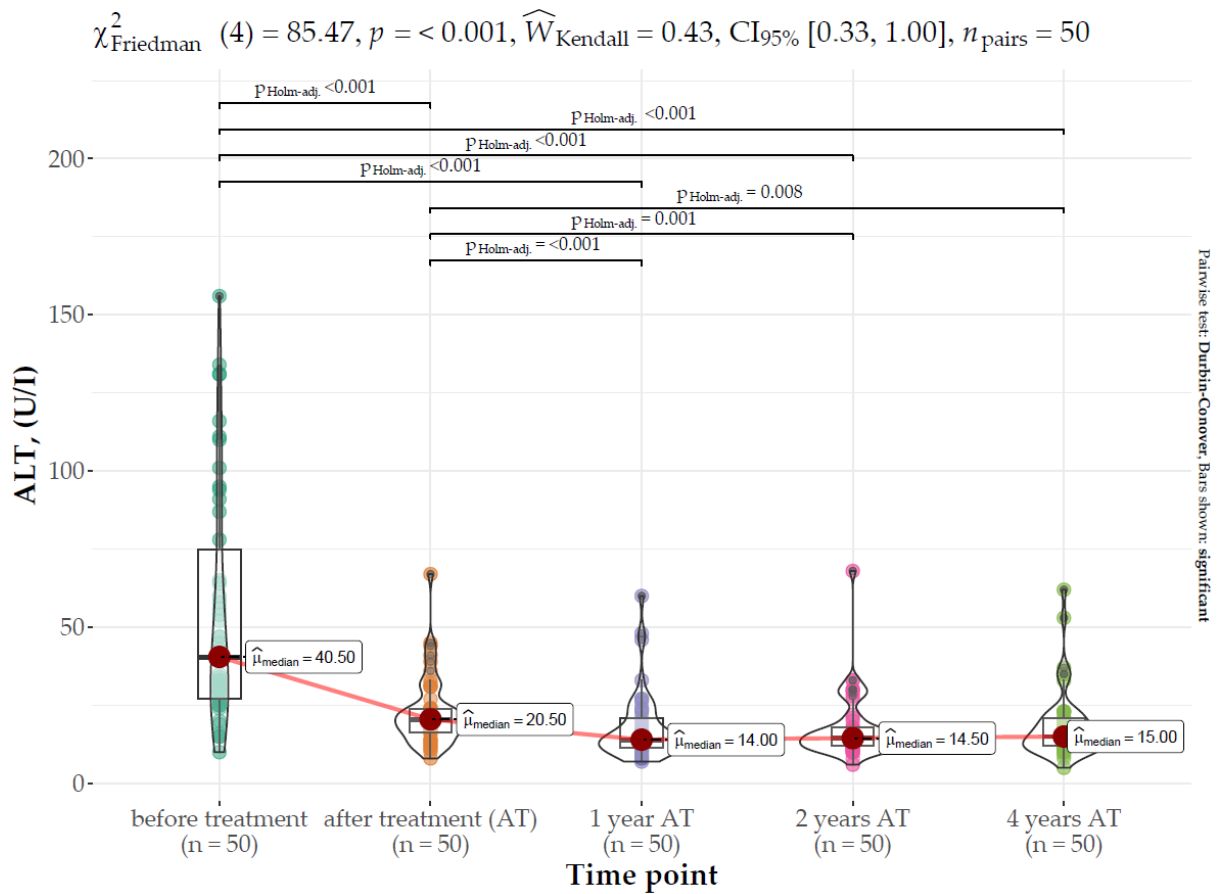


Figure S3. Distribution of LS (kPa) parameters at baseline and 4 years after the end of treatment (EOT) in kidney transplant recipients.



	Before treatment	After treatment	1 year AT	2 years AT	4 years AT
Mdn (IQR)	40.5 (47.75)	20.2 (0.12)	14.0 (9.50)	14.5 (6.00)	15.00 (8.75)

Figure S4 Distribution of alanine aminotransferase (ALT, U/l) at baseline, end of treatment (EOT), and 1, 2, and 4 years following sustained virologic response (SVR) in kidney transplant recipients.

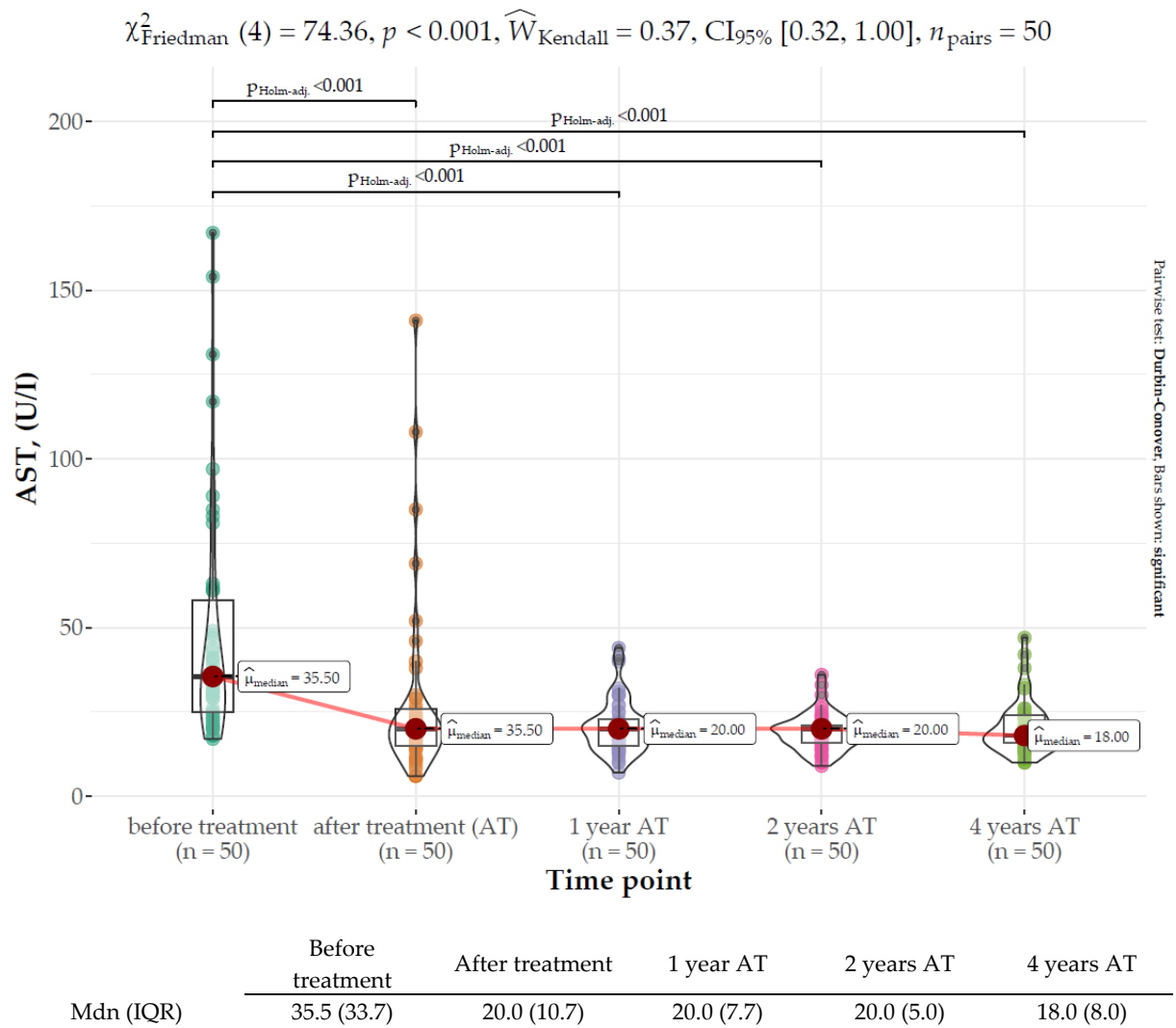
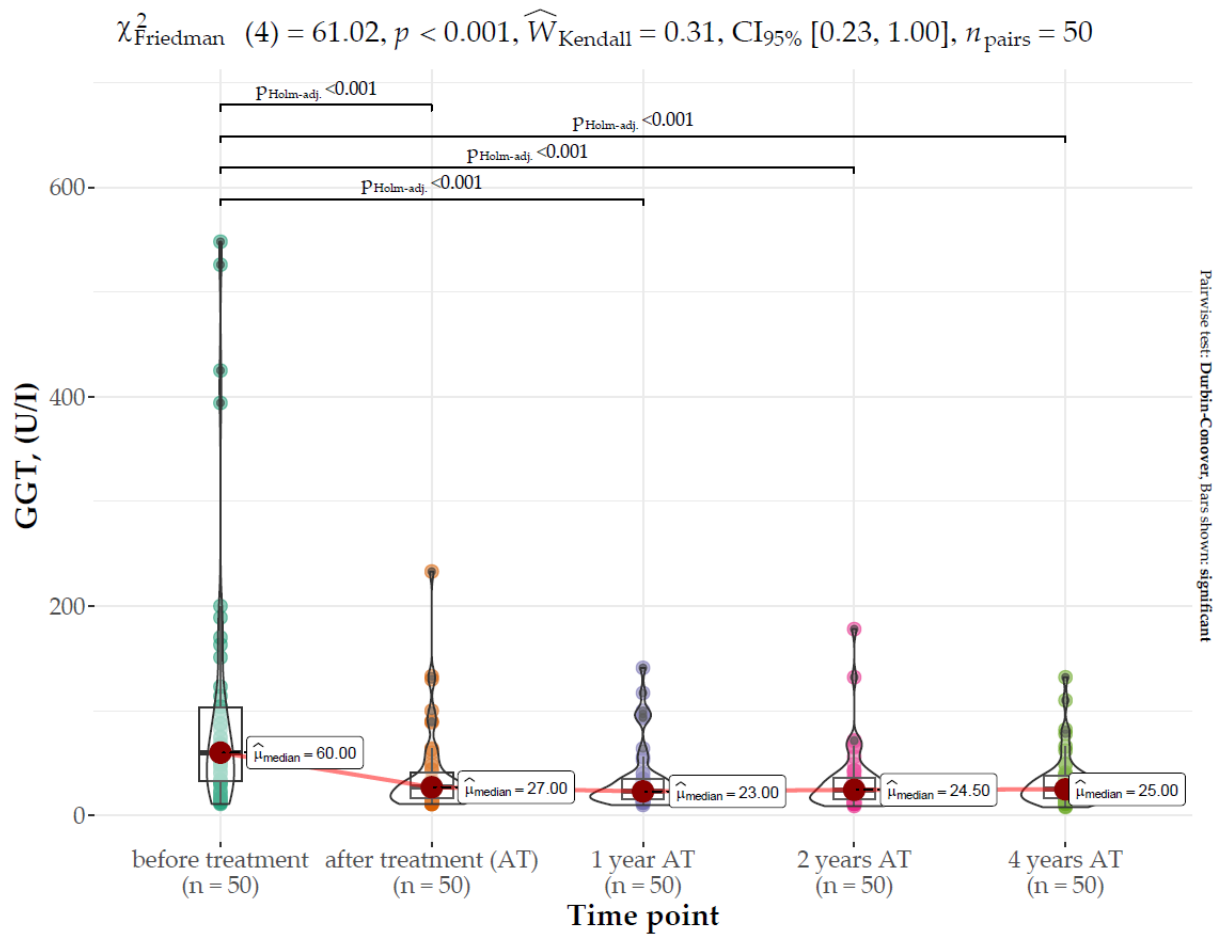


Figure S5 Distribution of aspartate aminotransferase (AST, U/l) at baseline, end of treatment (EOT), and 1, 2, and 4 years following sustained virologic response (SVR) in kidney transplant recipients.



	Before treatment	After treatment	1 year AT	2 years AT	4 years AT
Mdn (IQR)	60.0 (70.5)	27.0 (24.5)	23.0 (18.7)	24.5 (20.5)	25.0 (20.5)

Figure S6 Distribution of gamma glutamyl transferase (GGT, U/l) at baseline, end of treatment (EOT), and 1, 2, and 4 years following sustained virologic response (SVR) in kidney transplant recipients.