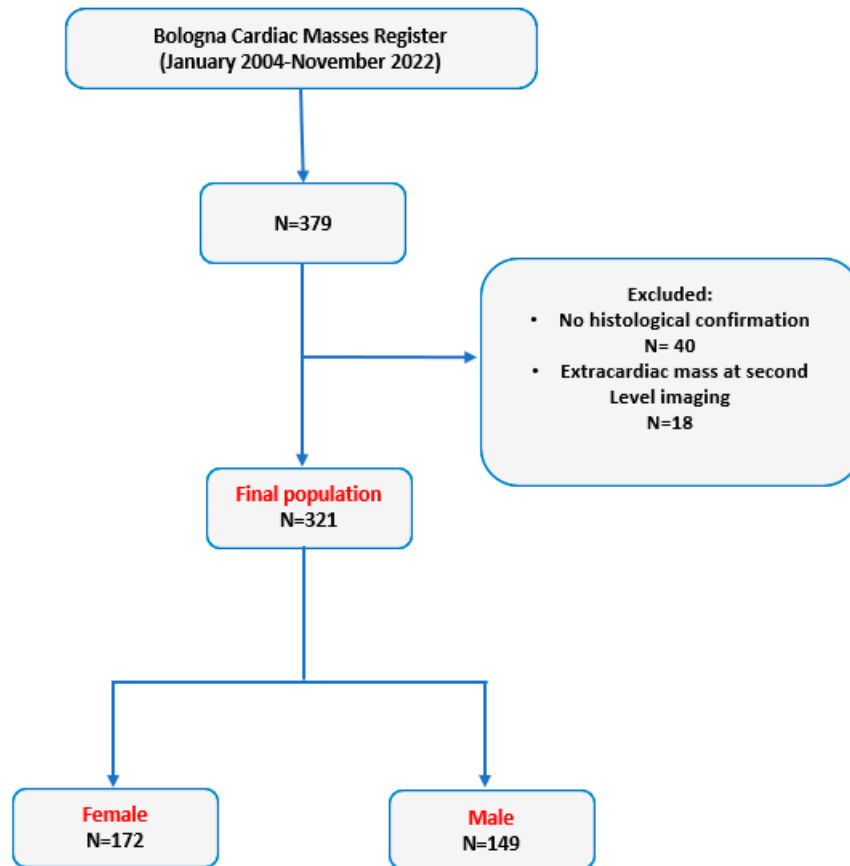


## **SUPPLEMENTARY MATERIALS**

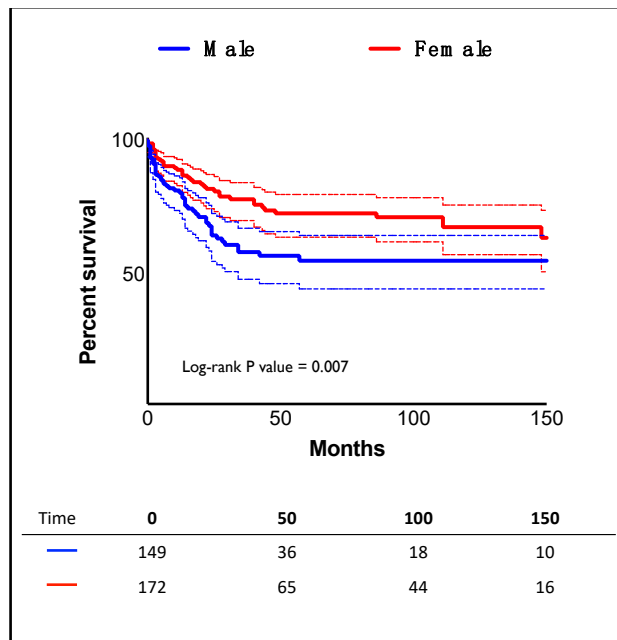
### **SUPPLEMENTARY FIGURE LEGEND**

**Supplementary Figure S1.** Study flow chart.

**Supplementary Figure S2.** Kaplan-Meier Survival Curves in the overall population according to gender. In the lower panel, the table shows the number of patients at risk during follow up.



Supplementary Figure S1. Study flow chart.



**Supplementary Figure S2. Kaplan-Meier Survival Curves** in the overall population according to gender. In the lower panel, the table shows the number of patients at risk during follow up.

## SUPPLEMENTARY TABLES

**Supplementary Table S1.** Comparison of echocardiographic features between male and female patients affected by cardiac myxoma.

	<b>Total population</b> <b>N = 111</b>	<b>Female patients</b> <b>N = 80</b>	<b>Male patients</b> <b>N = 31</b>	<b>P-value</b>
<b>Mass features</b>				
Infiltration, n (%)	0 (0.0)	0 (0.0)	0 (0.0)	-
Max CM diameter in mm, mean $\pm$ SD	34.8 $\pm$ 1.3	33.8 $\pm$ 1.5	34.6 $\pm$ 2.4	0.5
Inhomogeneity, n (%)	18 (16.2)	7 (8.8)	11 (35.4)	0.22
Irregular margins, n (%)	13 (11.7)	7 (8.8)	6 (19.4)	0.12
Mobility, n (%)	91 (82)	64 (80)	27 (87.1)	0.38
Sessile mass, n (%)	29 (26.1)	22 (27.5)	7 (22.6)	0.59
Polylobate mass, n (%)	14 (12.6)	9 (11.3)	5 (16.1)	0.49

Continuous variables are presented as mean  $\pm$  Standard Deviation (SD); categorical ones as n (%). Abbreviations: CM: Cardiac Mass.