

Figure S1 Logit conversion score and distribution of propensity scores before and after matching

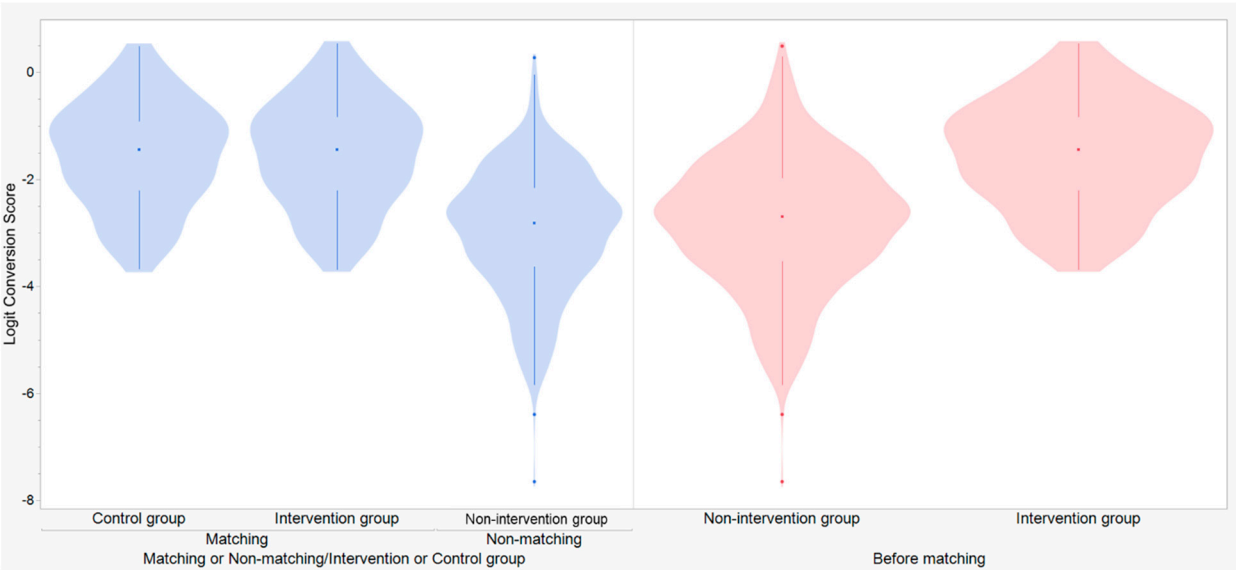


Figure S2 Changes in eGFRcr over time

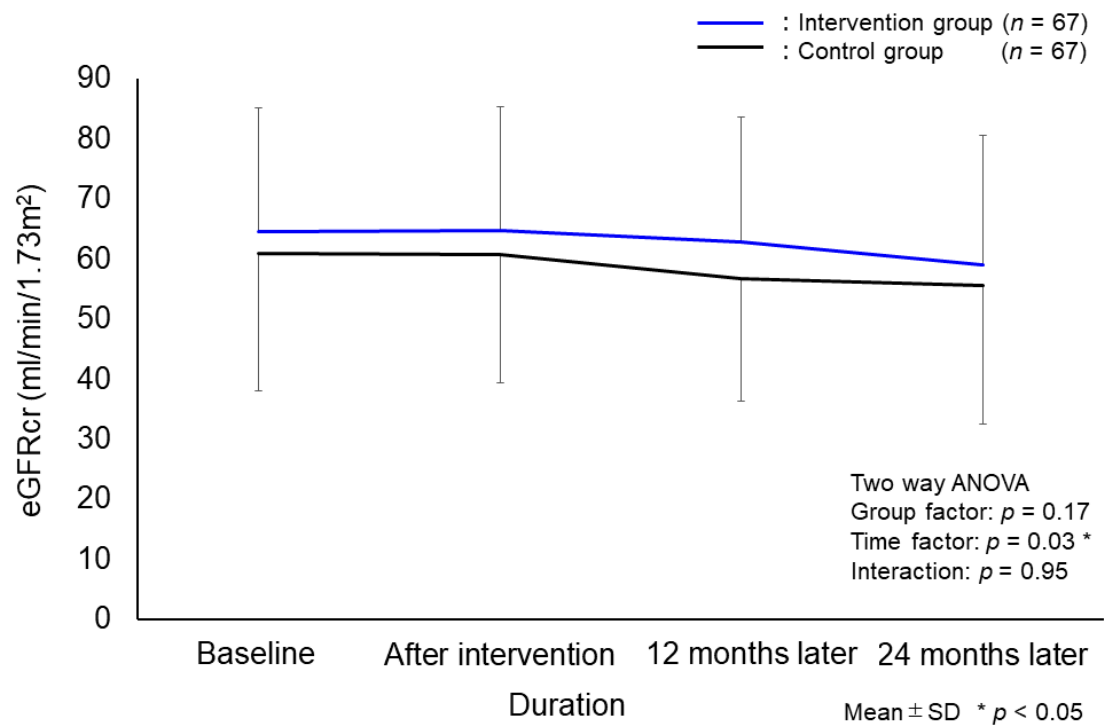


Figure S3 Changes in urinary Alb/Cre ratio over time

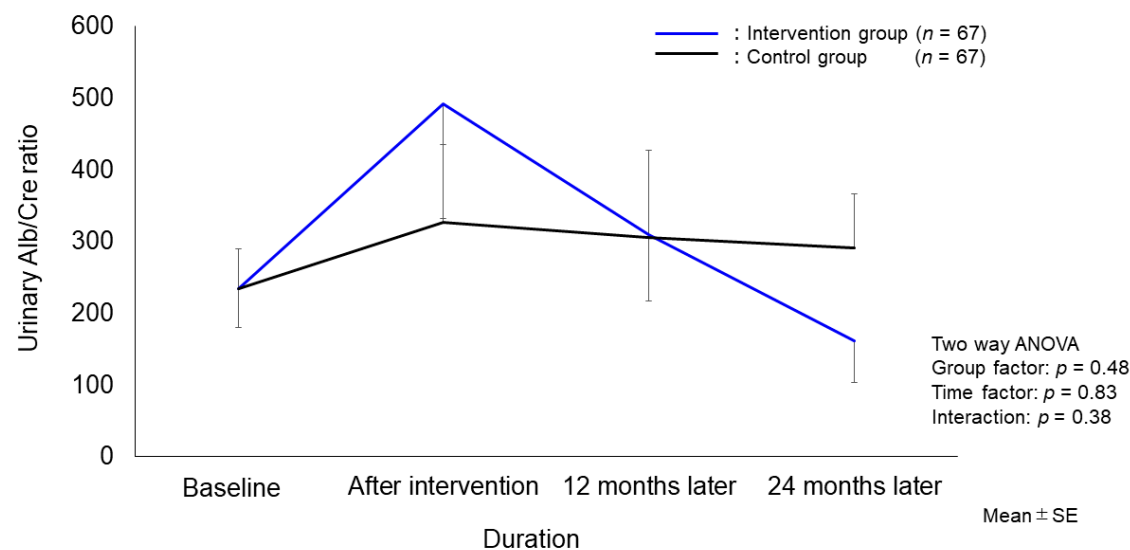


Table S1 DKD severity classification

Albuminuria segment		A1	A2	A3
Determination of urinary albumin Urinary albumin/Creatine ratio (mg / gCr) Determination of urinary protein (Urinary protein / creatine ratio) (g / gCr)		Normal albuminuria < 30	Microalbuminuria 30-299	Over albuminuria ≥ 300 or Highly proteinuria ≥ 0.5
eGFR segment (ml / min /1.73m ²)	≥ 90	Stage I	Stage II	Stage III
	60-89			
	45-59	Stage I	Stage II	Stage III
	30-44			
	15-29	Stage IV	Stage IV	Stage IV
	< 15	Stage V	Stage V	Stage V
During dialysis therapy		Stage V	Stage V	Stage V

Table S2 Physical activity of IPAQ in the intervention group during the six months intervention preceding follow-up

	Pre intervention (<i>n</i> = 67)	2nd month (<i>n</i> = 67)	3rd month (<i>n</i> = 67)	4th month (<i>n</i> = 67)	5th month (<i>n</i> = 66)	6th month (<i>n</i> = 67)	ANOVA results
Physical activity (kcal/week)	544.9 ±1503.6	1295.1 ±1887.2	1708.8 ±2162.9 *	1750.4 ±2043.0 *	1632.9 ±1880.9 *	1344.0 ±1644.4	<i>p</i> = 0.002

Data are presented as mean ± standard deviation. One-way ANOVA and Tukey HSD were used for statistical analysis.

The significance level was set at 5%. *p* *: vs. Pre intervention with *p* < 0.05.