

Supplementary material

**Characteristics of patients treated with JAK inhibitors in rheumatoid arthritis before versus after VTE risk warnings.**

**Supplemental Table S1. Characteristics of the patients according to treatment, before imputation.**

Parameters	Baricitinib n = 155	Tofacitinib n = 77
<b>Patients baseline characteristics</b>		
Women	118/155 (76.1)	51/77 (66.2)
Age (years), mean $\pm$ SD	59.6 $\pm$ 14.2	56.7 $\pm$ 13.4
BMI (kg/m <sup>2</sup> ) <sup>1</sup> , mean $\pm$ SD	27.0 $\pm$ 5.9	27.1 $\pm$ 6.0
Smoking status		
Non-smoker	62/106 (58.5)	22/57 (46.8)
Former smoker	22/106 (20.8)	12/57 (25.5)
Current smoker	22/106 (20.8)	13/57 (27.7)
<b>Rheumatoid arthritis characteristics</b>		
RA duration (years) <sup>2</sup> , median (IQR)	11 (4 to 20)	11 (6 to 19)
Seropositivity status		
RF + / ACPA +	122/154 (79.2)	54/76 (71.1)
RF + / ACPA -	11/154 (7.1)	8/76 (10.5)
RF - / ACPA +	8/154 (5.2)	7/76 (9.2)
RF - / ACPA -	13/154 (8.4)	7/76 (9.2)
Erosion presence	101/148 (68.2)	55/73 (75.3)
Extra-articular involvement	28/155 (18.1)	17/77 (22.1)
Surgery related to RA	41/155 (26.5)	19/77 (24.7)
Baseline CRP (mg/L) <sup>3</sup> , median (IQR)	7.0 (1.1 to 25.6)	9.9 (2.6 to 27.0)
<b>Previous treatments</b>		
Previous Methotrexate	140/155 (90.3)	67/77 (87.0)
Previous TNF inhibitor	117/155 (75.5)	59/77 (76.6)
Previous bDMARD-OMA	107/155 (69.0)	53/77 (68.8)
Prior bDMARD		
Naïve (0)	23/155 (14.8)	7/77 (9.1)
1 or 2	50/155 (32.3)	34/77 (44.2)
3 or more	82/155 (52.9)	36/77 (46.8)
<b>Comorbidities of special interest</b>		
Arterial hypertension	48/155 (31.0)	28/77 (36.4)
Diabetes	21/155 (13.5)	13/77 (16.9)
Dyslipidemia	40/155 (25.8)	20/77 (26.0)
Coronary heart disease	11/155 (7.1)	6/77 (7.8)
Peripheral artery disease	7/155 (4.5)	2/77 (2.6)
Stroke	11/155 (7.1)	6/77 (7.8)
Permanent atrial fibrillation	8/155 (5.2)	3/77 (3.9)
Sleep apnea syndrome	14/155 (9.0)	4/77 (5.2)
Pulmonary embolism	7/155 (4.5)	2/77 (2.6)
Deep venous thrombosis	8/155 (5.2)	3/77 (3.9)
Neoplastic history	11/155 (7.1)	6/77 (7.8)
Chronic obstructive pulmonary disease	7/154 (4.5)	6/77 (7.8)
Migraines	1/155 (0.6)	5/77 (6.5)
Herpes zoster infections	7/153 (4.6)	5/76 (6.6)
<b>Other treatments at baseline</b>		
Concomitant csDMARD		
None	92/153 (60.1)	47/75 (62.7)
Methotrexate	52/153 (34.0)	22/75 (29.3)
Salazopyrine	0/153 (0.0)	3/75 (4.0)
Leflunomide	7/153 (4.6)	3/75 (4.0)
Hydroxychloroquine (plaquenil)	2/153 (1.3)	0/75 (0.0)
Prednisolone baseline	87/155 (56.1)	32/77 (41.6)
Anticoagulant baseline	6/155 (3.9)	4/77 (5.2)
<b>Treatment characteristics</b>		
JAK inhibitor posology		
Classic RA posology	126/155 (81.3)	76/77 (98.7)

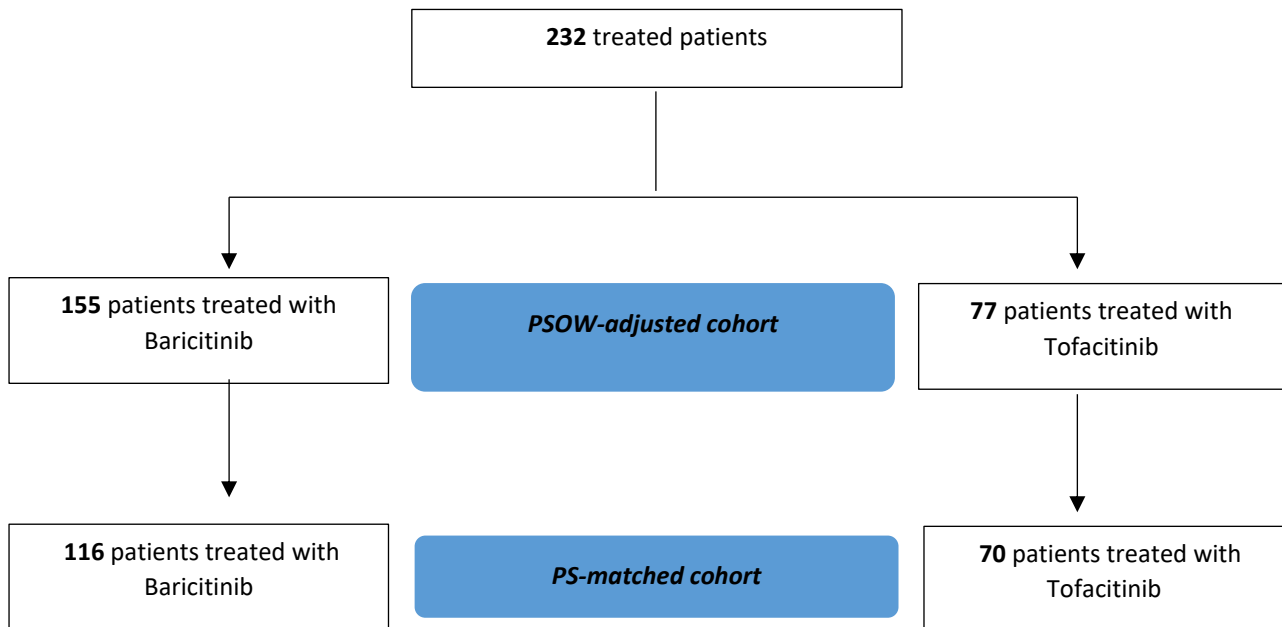
Reduced RA posology	29/155 (18.7)	1/77 (1.3)
Introduction before May 2019	107/155 (69.0)	54/77 (70.1)
<b>Treatment discontinuation</b>		
Discontinuation	78/155 (50.3)	35/77 (45.5)
Reasons for discontinuation		
Primary inefficacy	24/78 (30.8)	14/35 (40.0)
Secondary inefficacy	24/78 (30.8)	7/35 (20.0)
Adverse events	23/78 (29.4)	11/35 (31.4)
Other (pregnancy, lack of observance, decompensation of comorbidities, no apparent reason)	7/78 (9.0)	3/35 (8.6)

---

Values are no./total no. (%) unless otherwise stated. <sup>1</sup> 71 missing values (n=52 vs. 19) <sup>2</sup> 6 missing values (n=4 vs. 2) <sup>3</sup> 35 missing values (n=20 vs. 15)

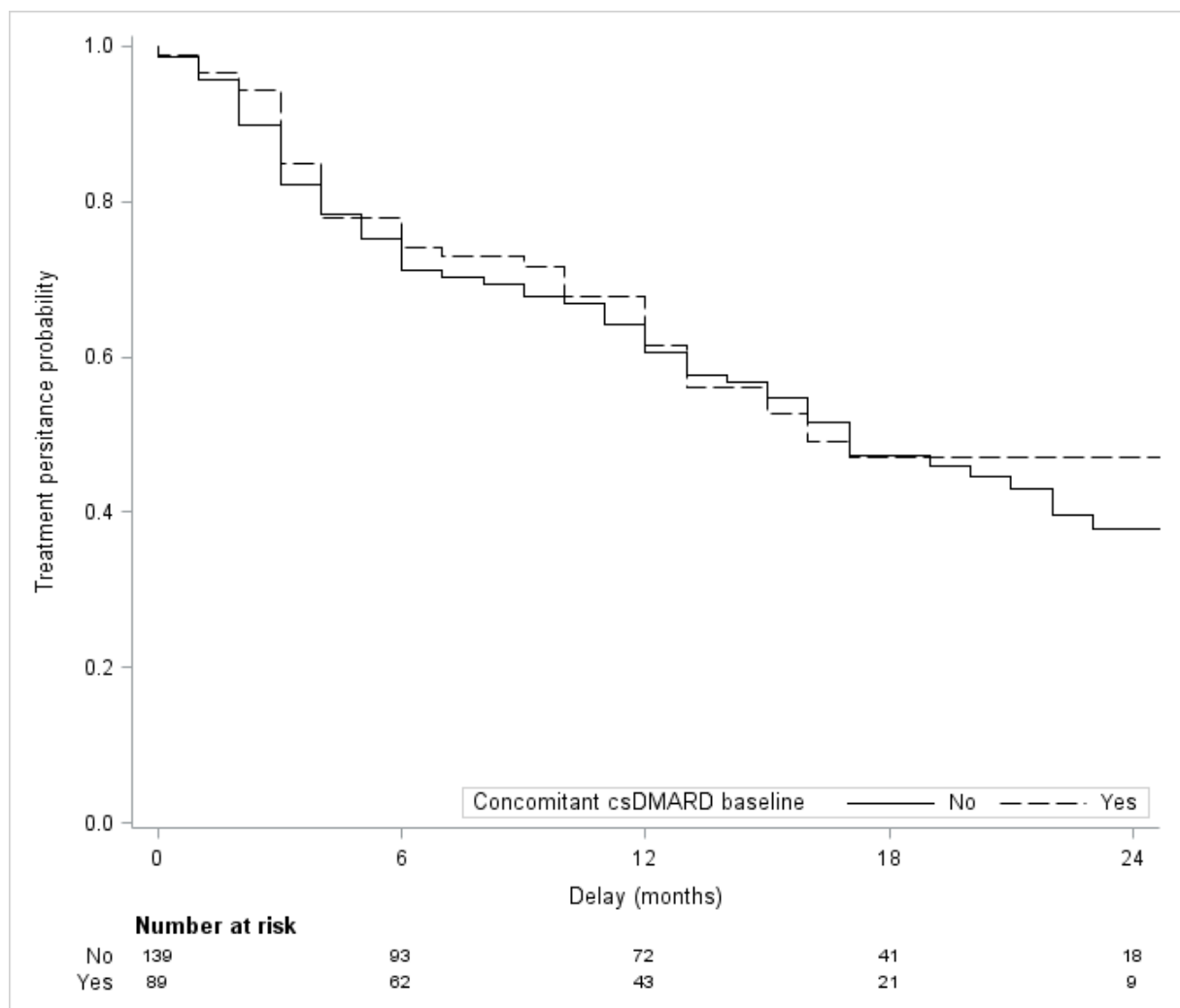
Abbreviations: ACPA = anti-citrullinated protein antibody; bDMARD = biological disease-modifying antirheumatic drug; BMI = body mass index; CRP = C-reactive protein; csDMARD = conventional synthetic disease-modifying antirheumatic drug; IQR = interquartile range; OMA = other mechanism of action; RA = Rheumatoid arthritis; RF = rheumatoid factor; SD = standard deviation; TNF = tumor necrosis factor.

**Supplemental Figure S1. Study Flow chart.**



Abbreviations: PS = propensity score; PSOW = propensity score weighting using overlap weights.

**Supplemental Figure S2. Two-year follow-up treatment persistence, with vs. without concomitant csDMARD at baseline.**



Supplemental Figure S3. Two-year follow-up treatment persistence depending on previous bDMARD status.

