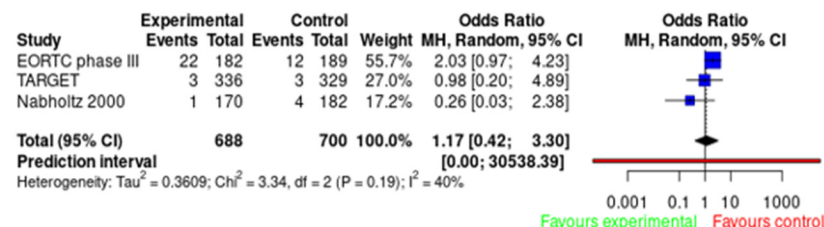
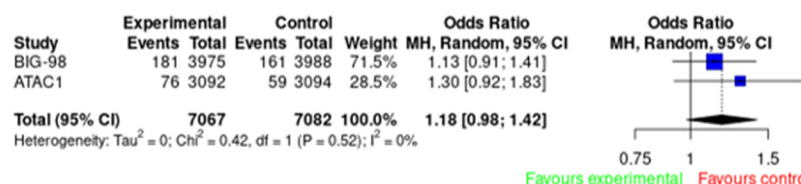


## Supplementary Material S1: additional analysis early vs. advanced/metastatic breast cancer.

An additional analysis was performed only when the qualified studies included studies involving patients with early and advanced breast cancer.

### 1. Cardiovascular events:

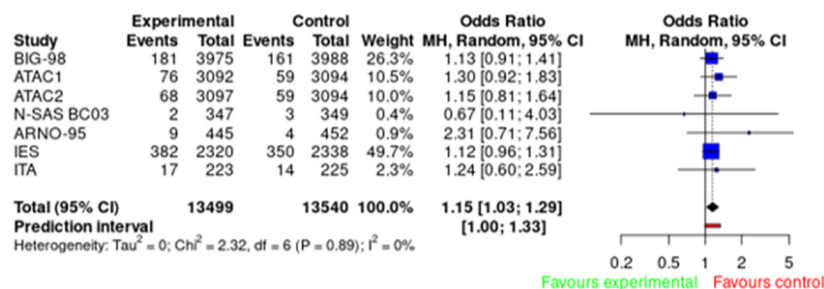
#### A. AIs vs. tamoxifen monotherapy.



EARLY BREAST CANCER

ADVANCED/METASTATIC BREAST CANCER

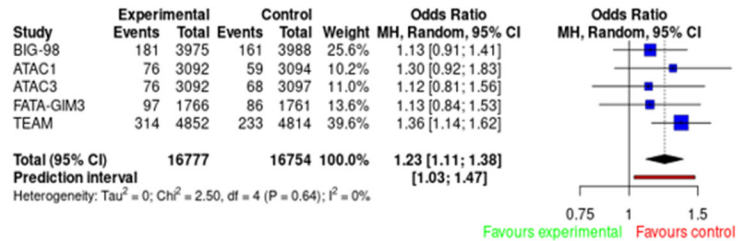
#### B. AIs (monotherapy) or AIs+tamoxifen (sequence) vs. tamoxifen (monotherapy).



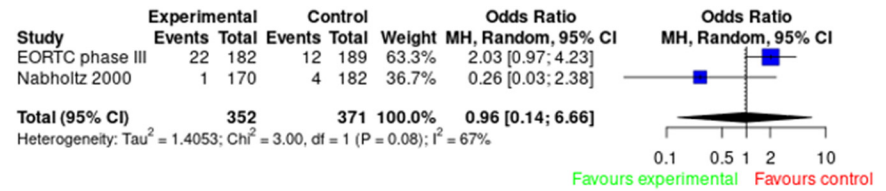
EARLY BREAST CANCER

ADVANCED/METASTATIC BREAST CANCER

C. AIs (monotherapy) vs. AIs+tamoxifen (sequence) or tamoxifen (monotherapy).



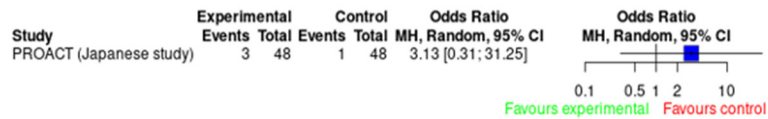
EARLY BREAST CANCER



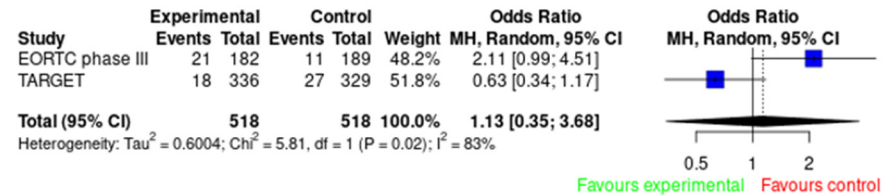
ADVANCED/METASTATIC BREAST CANCER

## 2. Arterial hypertension:

A. AIs vs. tamoxifen monotherapy.

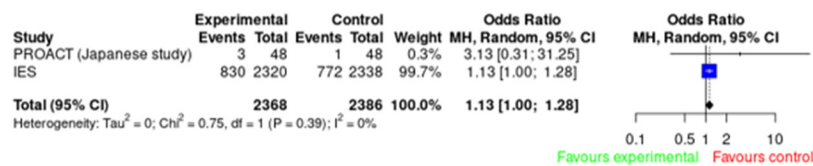


EARLY BREAST CANCER

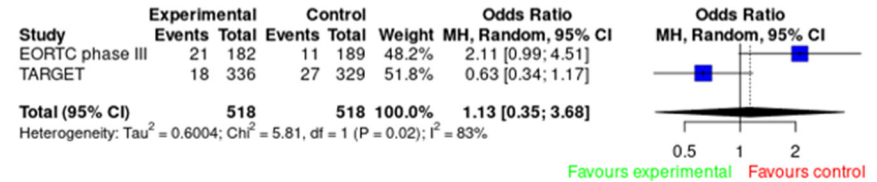


ADVANCED/METASTATIC BREAST CANCER

B. AIs (monotherapy) or AIs+tamoxifen (sequence) vs. tamoxifen (monotherapy).

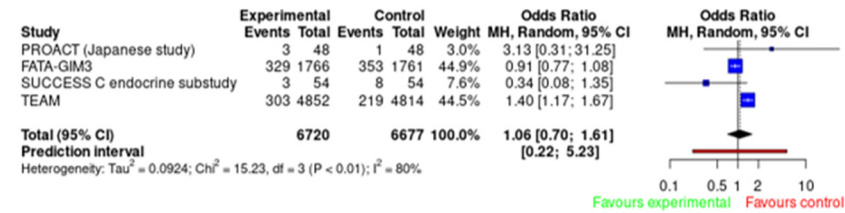


EARLY BREAST CANCER

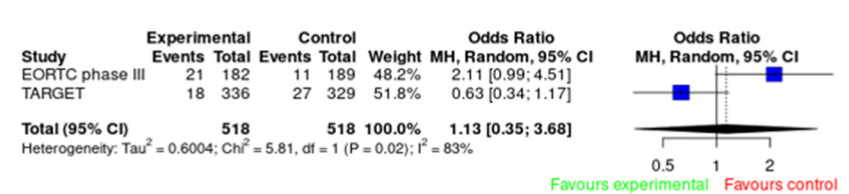


ADVANCED/METASTATIC BREAST CANCER

C. AIs (monotherapy) vs. AIs+tamoxifen (sequence) or tamoxifen (monotherapy).



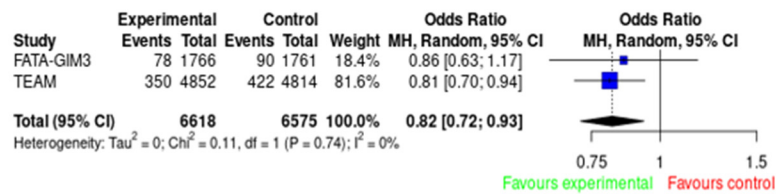
EARLY BREAST CANCER



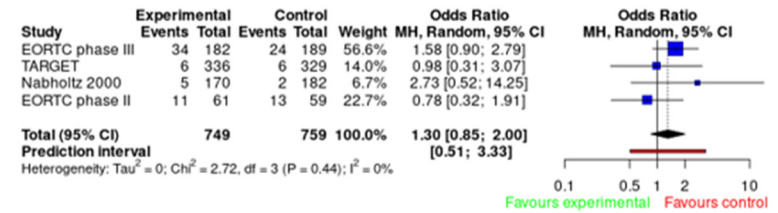
ADVANCED/METASTATIC BREAST CANCER

### 3. Body weight gain:

#### A. Als (monotherapy) vs. Als+tamoxifen (sequence) or tamoxifen (monotherapy)



EARLY BREAST CANCER



ADVANCED/METASTATIC BREAST CANCER