

# Implementation of EHMRG Risk Model in an Italian Population of Elderly Patients with Acute Heart Failure

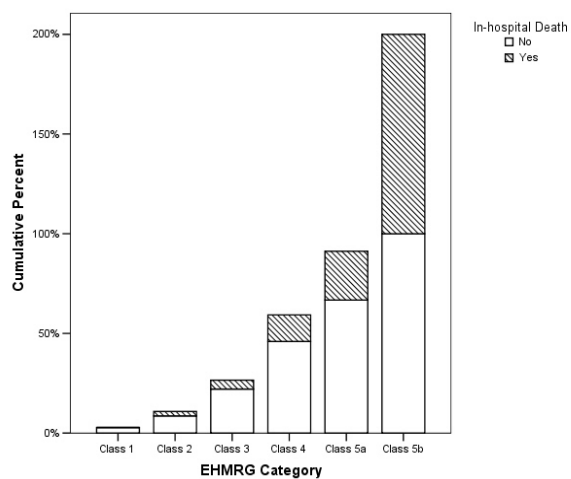
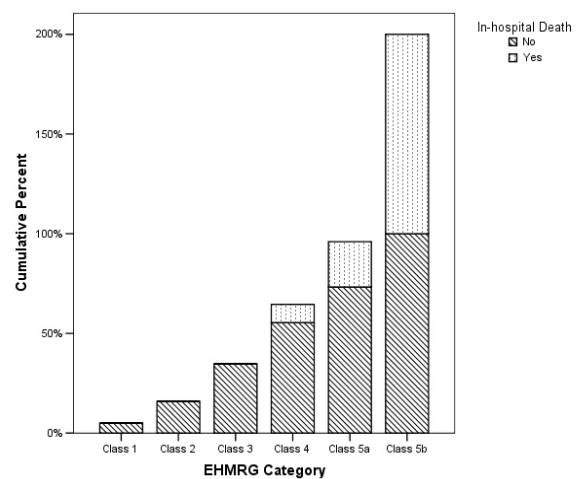
## Supplementary Materials

**Table S1.** Differences between surviving and non-surviving patients.

Clinical Variables	Surviving ( <i>n</i> = 394)	Non-Surviving ( <i>n</i> = 45)	p
Age, years, ( $\pm$ SD)	84.3 ( $\pm$ 7.65)	87.1 ( $\pm$ 8.11)	0.024
Males ( <i>n</i> , %)	161 (36.7%)	19 (4.3%)	0.861
NYHA class, [IQR]	2 [1]	3 [1]	0.0001
Length of hospitalization, days, [IQR]	11.2 ( $\pm$ 6.92)	9.51 ( $\pm$ 7.85)	0.121
BNP on admission, pg/ml, [IQR]	600.5 [805]	560.5 [846]	0.001
SBP, mmHg, ( $\pm$ SD)	127.5 ( $\pm$ 28.1)	128.0 ( $\pm$ 28.2)	0.001
HR, bpm, ( $\pm$ SD)	89.4 ( $\pm$ 24.6)	90,4 ( $\pm$ 23.9)	0.104
SpO2, %, ( $\pm$ SD)	91.8 ( $\pm$ 7.3)	92,0 ( $\pm$ 7.07)	0.135
Creatinine, mg/dl, ( $\pm$ SD)	1.6 ( $\pm$ 1.0)	1.45 ( $\pm$ 0.99)	0.006
Potassium, mmol/l, ( $\pm$ SD)	4.00 ( $\pm$ 0.69)	4.04 ( $\pm$ 0.65)	0.098
Out of range Potassium, ( <i>n</i> , %)	180 (41.1%)	74 (53.6%)	0.016
Troponin, ng/ml, [IQR]	0.05 [0.10]	0.05 [0.11]	0.172
Increased Troponin, ( <i>n</i> , %)	204 (46.5%)	63 (45.7%)	0.0001
ED arrival by ambulance, ( <i>n</i> , %)	284 (64.7%)	83 (60.1%)	0.023
Active cancer, ( <i>n</i> , %)	79 (18.0%)	1 (0.2%)	0.003
Metolazone use, ( <i>n</i> , %)	9 (2.1%)	3 (0.72%)	0.088
EHMRG, [IQR]	69 [98.4]	60.8 [99,3]	0.0001
EHMRG Class, [IQR]	5 [2]	5 [3]	0.001

**Table S2.** Cox regression analysis.

Panel A: Whole sample ( $n = 439$ )					
Variable	B	HR	95%CI		p
			Lower	Upper	
EHRMG Category	1.046	2.85	1.64	4.98	0.0001
NYHA Class	1.044	2.84	1.78	4.54	0.0001
BNP at the Admission	0.000	1.00	1.00	1.00	0.297
Sex	-0.121	0.89	0.43	1.81	0.740
Panel B: Seven days ( $n=138$ )					
Variable	B	HR	95%CI		P
			Lower	Upper	
EHRMG Category	0.977	2.66	1.36	4.97	0.004
NYHA Class	0.928	2.53	1.13	5.64	0.023
BNP at the Admission	0.000	1.00	1.00	1.00	0.156
Sex	-0.626	0.53	0.18	1.56	0.252

Panel A. Whole sample ( $n=439$ )Panel B. 7-days ( $n=138$ )**Figure S1.** Cumulative percentage of in-hospital deaths according to EHRMG ( $p < 0.0001$ ).

Filename: jcm-1733105-supplementary.docx  
Directory: E:\5.25\sensors-1733280  
Template: C:\Users\MDPI\AppData\Roaming\Microsoft\Templates\Normal.dotm  
Title:  
Subject:  
Author: Lorenzo Falsetti  
Keywords:  
Comments:  
Creation Date: 3/15/2022 7:20:00 PM  
Change Number: 6  
Last Saved On: 5/25/2022 3:01:00 PM  
Last Saved By: MDPI-52  
Total Editing Time: 16 Minutes  
Last Printed On: 5/25/2022 6:32:00 PM  
As of Last Complete Printing  
Number of Pages: 2  
Number of Words: 313 (approx.)  
Number of Characters: 1,549 (approx.)