

Supplementary Materials

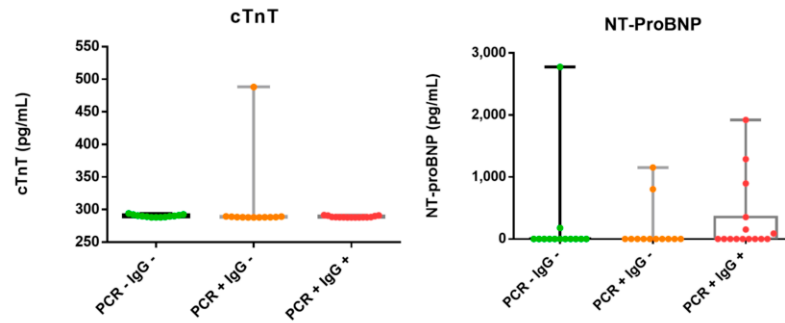


Figure S1. Box-and-whisker plots of classical cardiac biomarker concentrations in patient samples. PCR- IgG-, patients with a discharge diagnosis of COVID-19(green); PCR+ IgG-, patients with early SARS-CoV-2 infection(orange); PCR+ IgG+, patients with active SARS-CoV-2 infection(red). Data represent the mean \pm S.D.

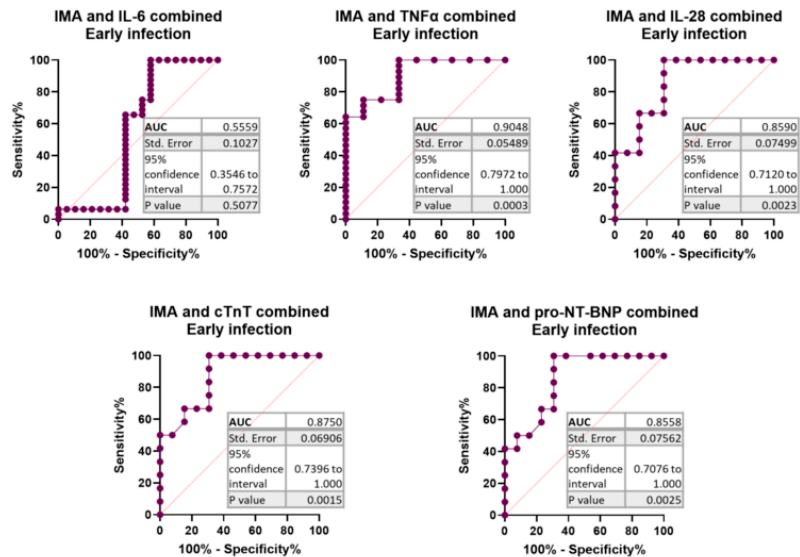


Figure S2. Receiver operating characteristic (ROC) curves and area under the curve (AUC) of the combination of ischemia-modified albumin (IMA) with interleukin 6 (IL-6), tumor necrosis factor alpha (TNF- α), interleukin 28 (IL-28), cardiac troponin T (cTnT) or pro N-terminal of B natriuretic peptide (NT-proBNP) in the early infection phase of COVID-19.