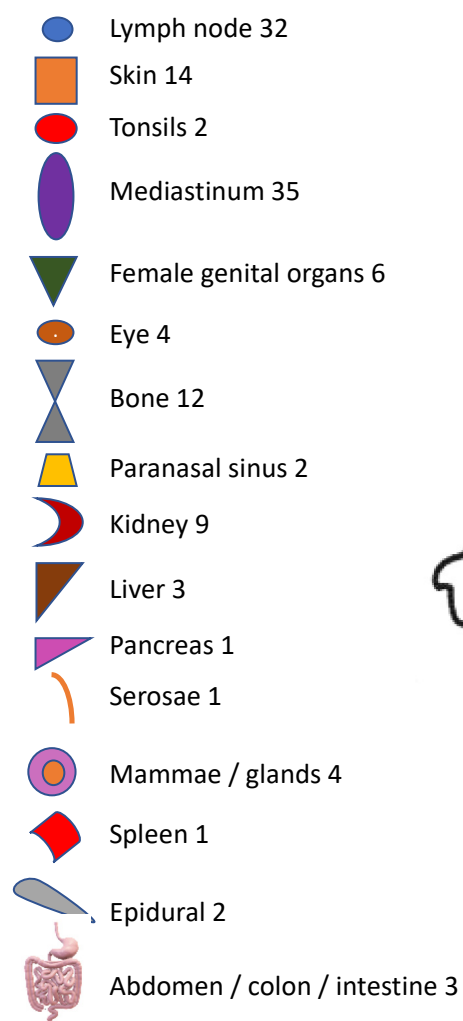
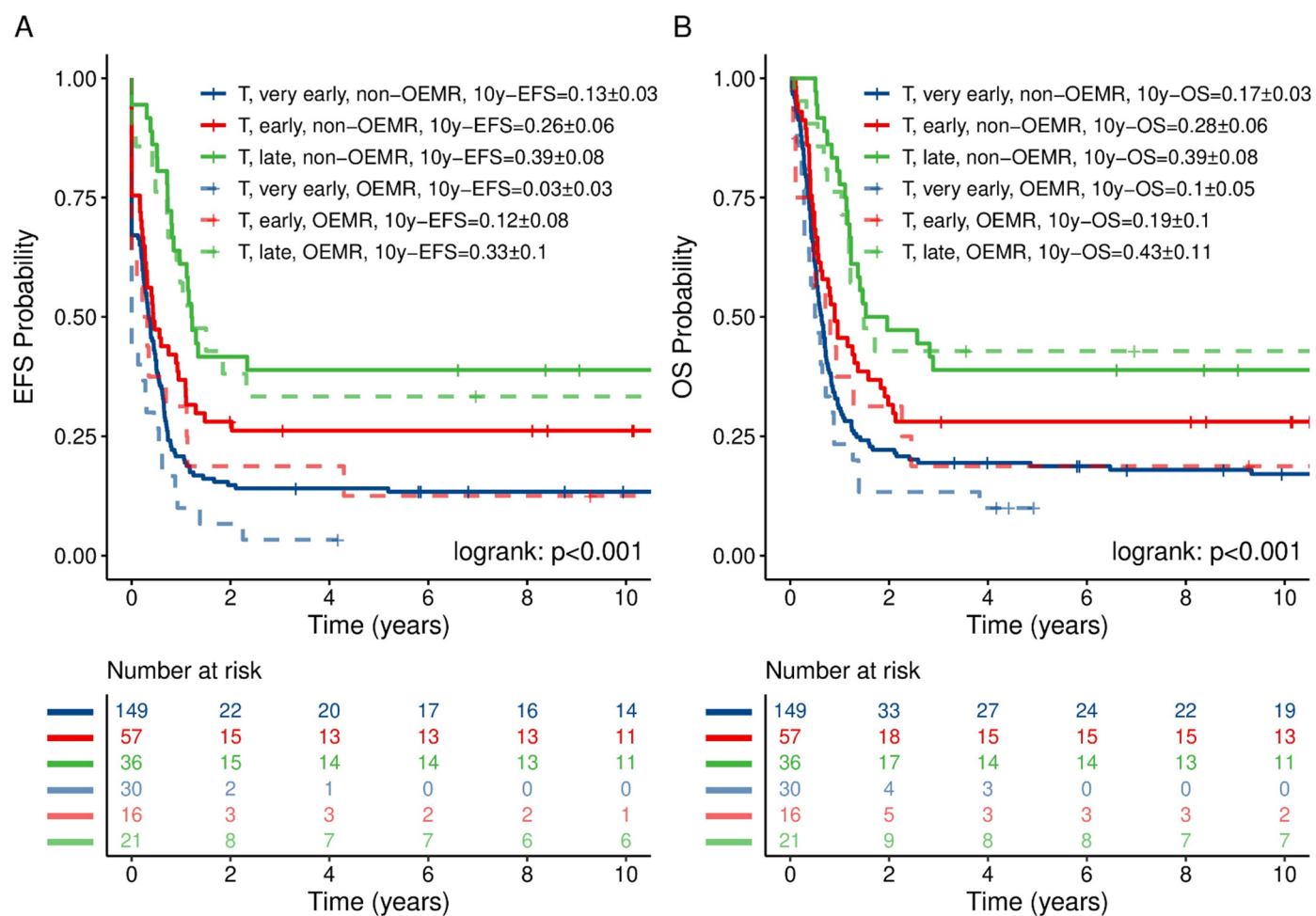


## Supplementary



**Figure S1:** Distribution of other extramedullary ALL relapses.





**Figure S2. T-ALL relapses.** pEFS (A) and pOS (B) of T-ALL OEMR and T-ALL non-OEMR depending on time to relapse.



1  
2  
3  
  
4  
5  
6  
7  
8  
9

Suppl. Table S1 genetic characteristics.

	OEM								OEMgroup									
	Total		no		yes		.		Lymphat. organs		Skin/glands		Mediastinum		Bone		Other	
	N	%	N	%	N	%	N	%	N	%	N	%	N	%	N	%	N	%
<b>Total</b>	2323	100.0	2191	100.0	132	100.0	2191	100.0	32	100.0	21	100.0	35	100.0	12	100.0	32	100.0
<b>genexp</b>																		
<b>negative</b>	651	28.0	610	27.8	41	31.1	610	27.8	12	37.5	9	42.9	8	22.9	1	8.3	11	34.4
<b>BCR-ABL+</b>	20	0.9	19	0.9	1	0.8	19	0.9	.	.	1	4.8	.	.	.	.	.	.
<b>ETV6-RUNX1+</b>	132	5.7	131	6.0	1	0.8	131	6.0	.	.	.	.	.	.	.	.	1	3.1
<b>MLL-AF4+</b>	13	0.6	13	0.6	.	.	13	0.6	.	.	.	.	.	.	.	.	.	.
<b>not done</b>	711	30.6	663	30.3	48	36.4	663	30.3	11	34.4	7	33.3	17	48.6	5	41.7	8	25.0
<b>not reported</b>	796	34.3	755	34.5	41	31.1	755	34.5	9	28.1	4	19.0	10	28.6	6	50.0	12	37.5

Legend to Suppl table 1: Abbreviations: BCR-ABL, Abelson-Tyrosinkinase (Abl)-Breakpoint Cluster Region; MLL-AF4, myeloid/lymphoid or mixed-lineage leukemia- ALL1 fused gene on Chromosome 4; ETV6-RUNX1, Ets-leukemia virus- Runt-related transcription factor 1; OEM, other extramedullary.



Suppl Table S2    Radiation in non OEMR and OEMR patients

	OEMR				OEMgroup							
	total		Lymphat. organs		Skin/glands		Mediastinum		Bone		Other	
	N	%	N	%	N	%	N	%	N	%	N	%
Total	132	100.0	32	100.0	21	100.0	35	100.0	12	100.0	32	100.0
radiation												
no	82	62.1	20	62.5	14	66.7	17	48.6	10	83.3	21	65.6
yes	46	34.9	12	37.5	7	33.3	16	45.7	1	8.3	10	31.2
unknown	4	3.0	.	.	.	.	2	5.7	1	8.3	1	3.1
local radiation or TBI or TBI+boost												
local	15	11.4	.	.	2	9.5	9	25.7	.	.	4	12.5
TBI	29	22.0	12	37.5	5	23.8	6	17.1	1	8.3	5	15.6
TBI + local boost	2	1.5	.	.	.	.	1	2.9	.	.	1	3.1
unknown	4	3.0	.	.	.	.	2	5.7	1	8.3	1	3.1