

Supplementary

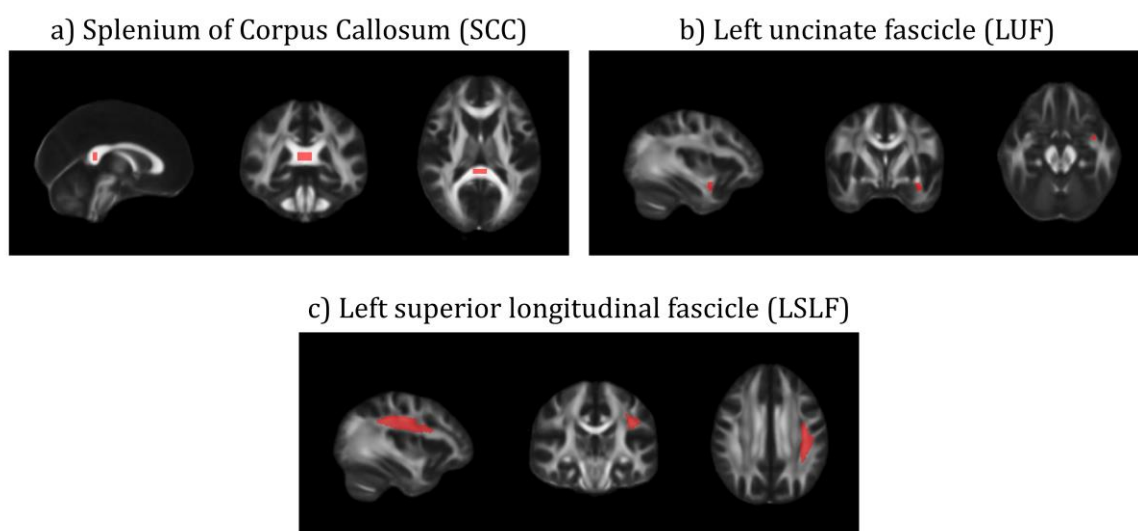


Figure S1. ROIs selected for ROI-based analyses.

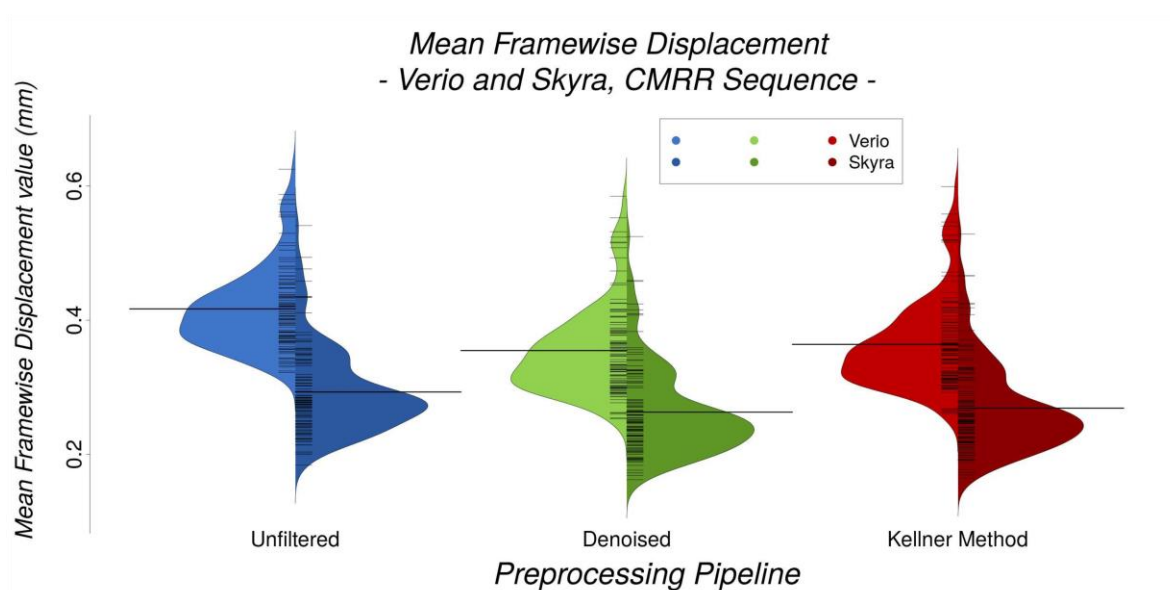


Figure S2. Motion effects quantified as mean frame-wise displacement (Verio and Skyra, CMRR sequence, $n = 115$) differ between preprocessing pipelines

**Negative age effect on FA compared between scanners
- preprocessed with "unringing" -**

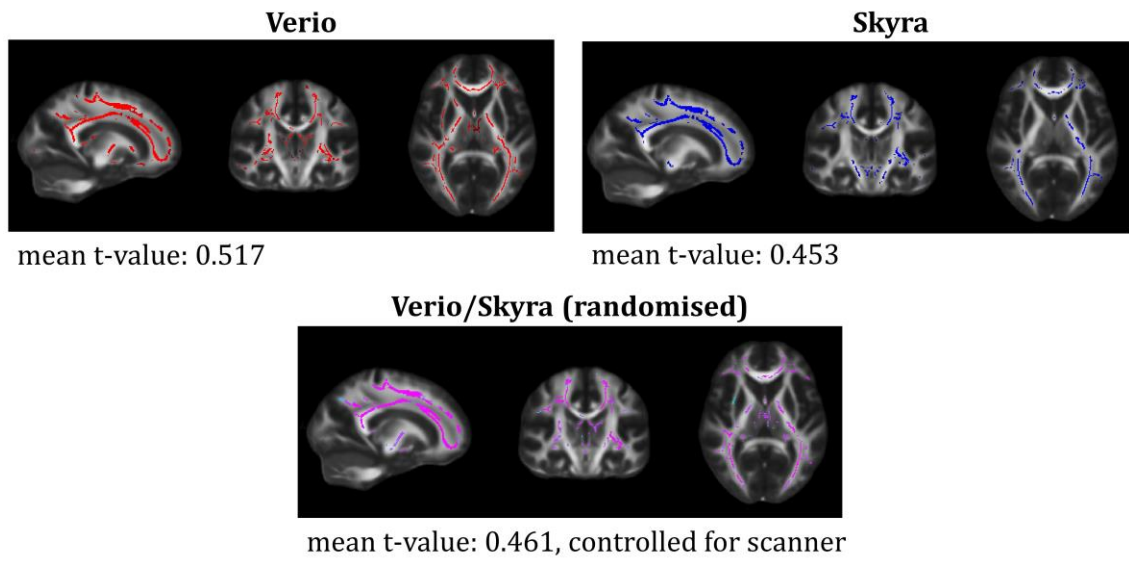


Figure S3. TBSS results of the negative age effect on the whole brain WM skeleton compared between scanners.