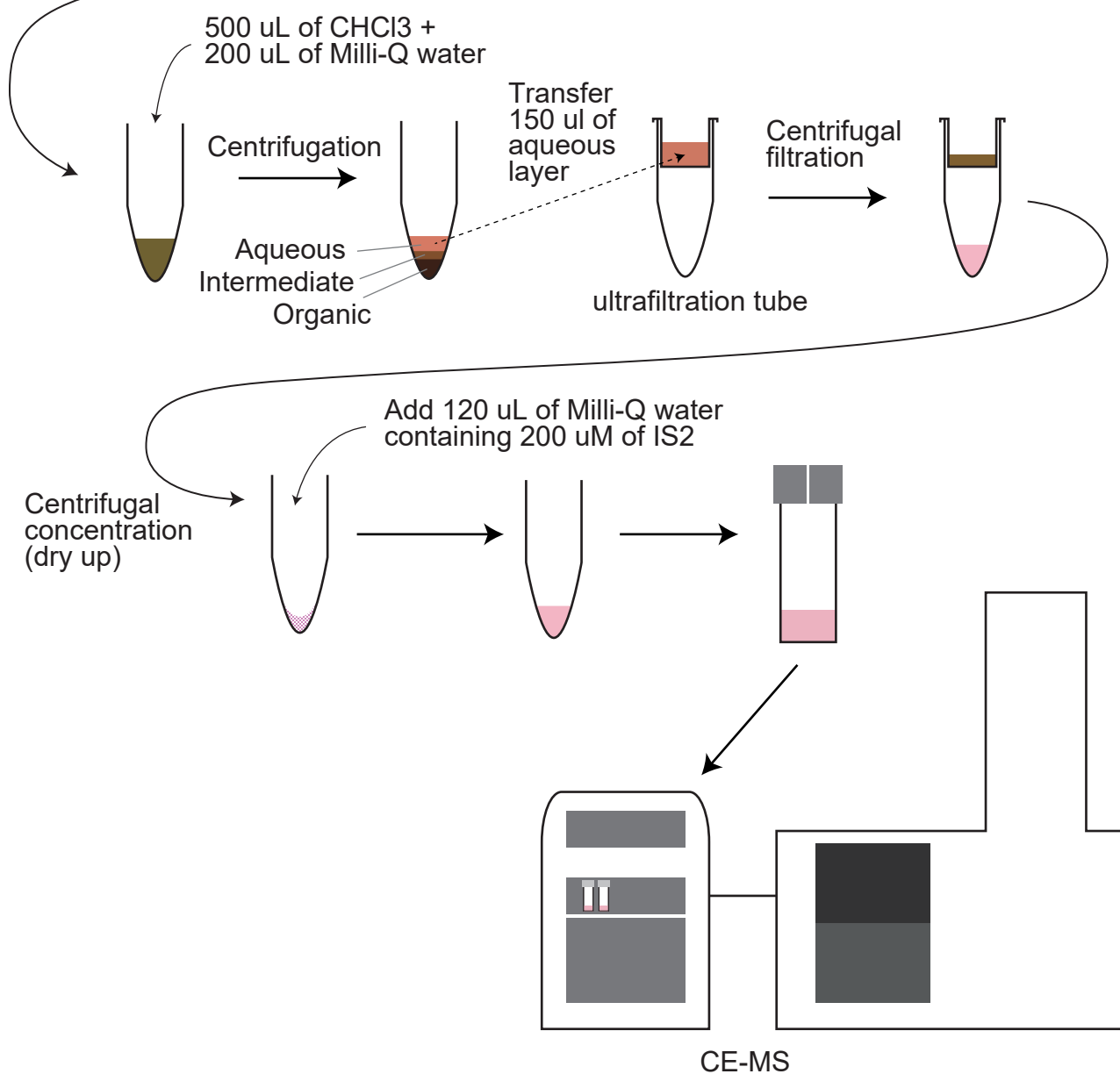


Dilution rate designation	(1) MeOH (uL)	(2) Milli-Q (uL)	(3) Sample (uL)
X10	450	0	50
X20	450	25	25
X39	450	37	13
X83	450	44	6
X167	450	47	3

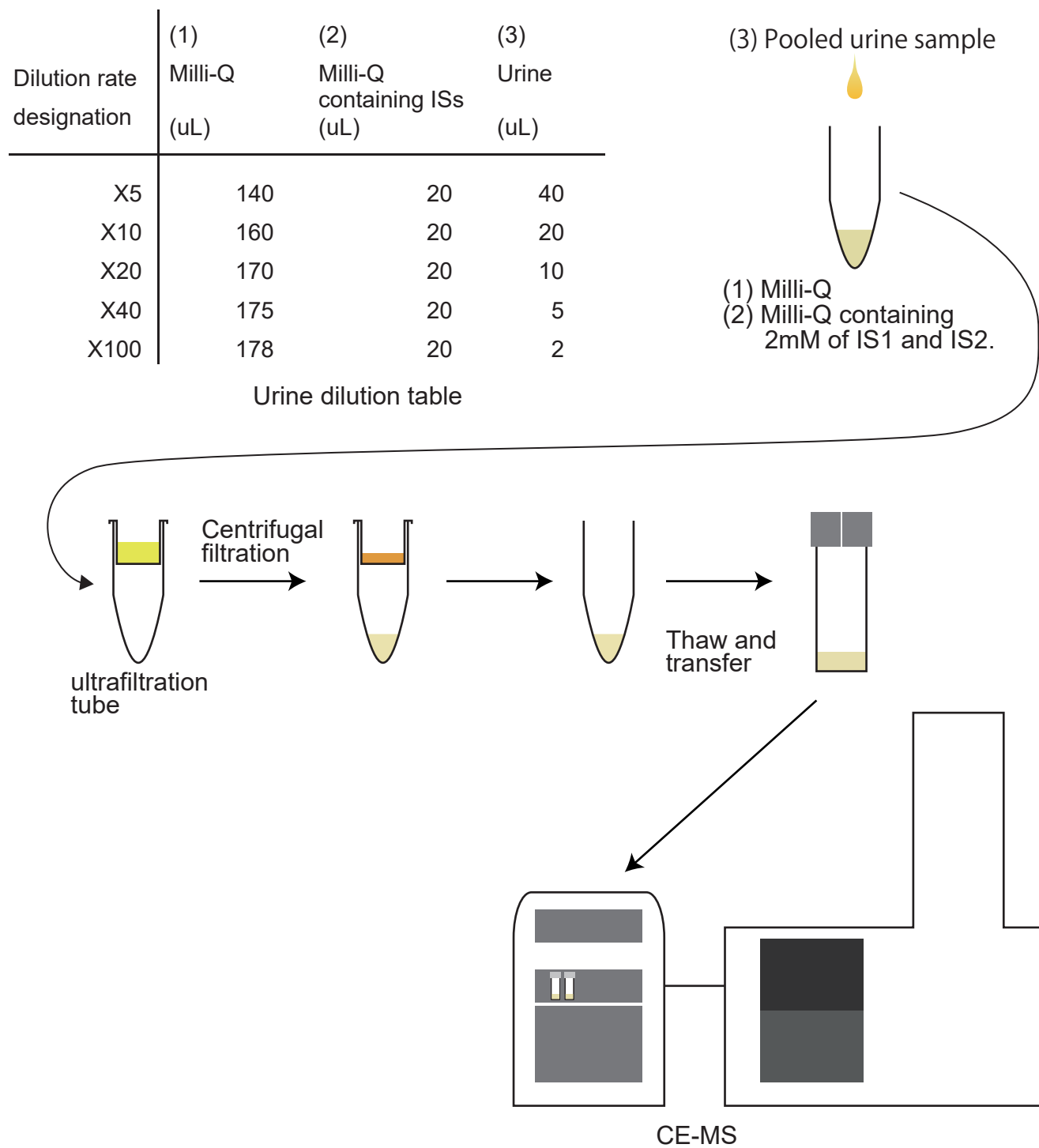
Plasma dilution table

(3) Pooled plasma sample

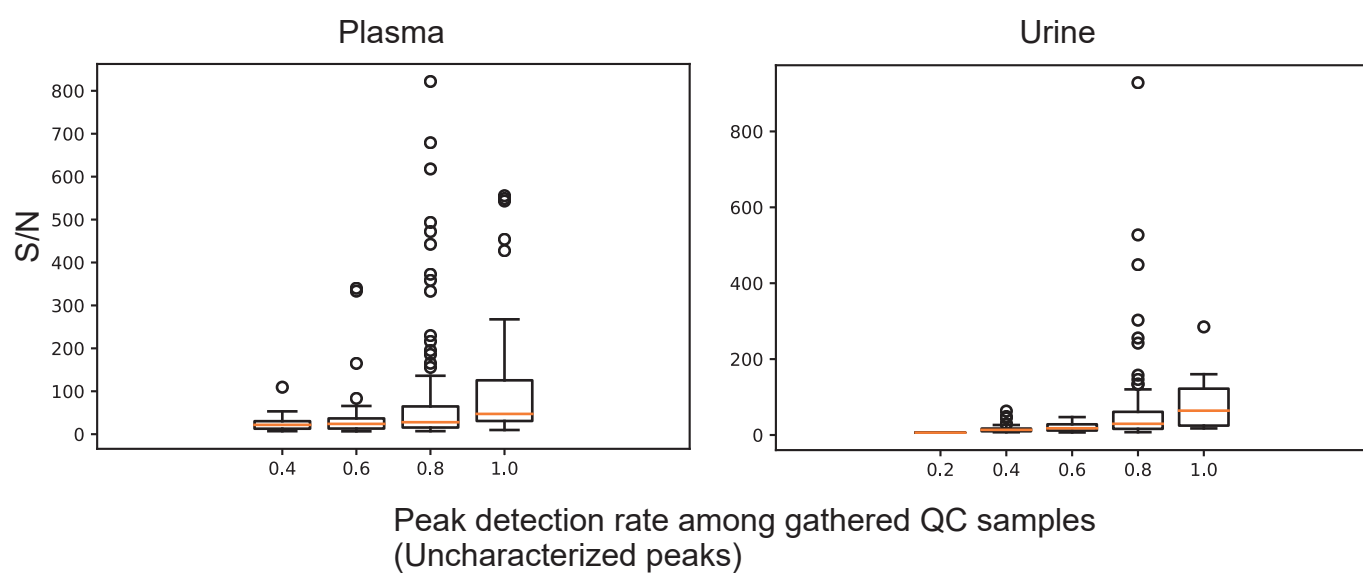
(1) 450 uL of MeOH  
containing 20 uM of IS1  
(2) Milli-Q



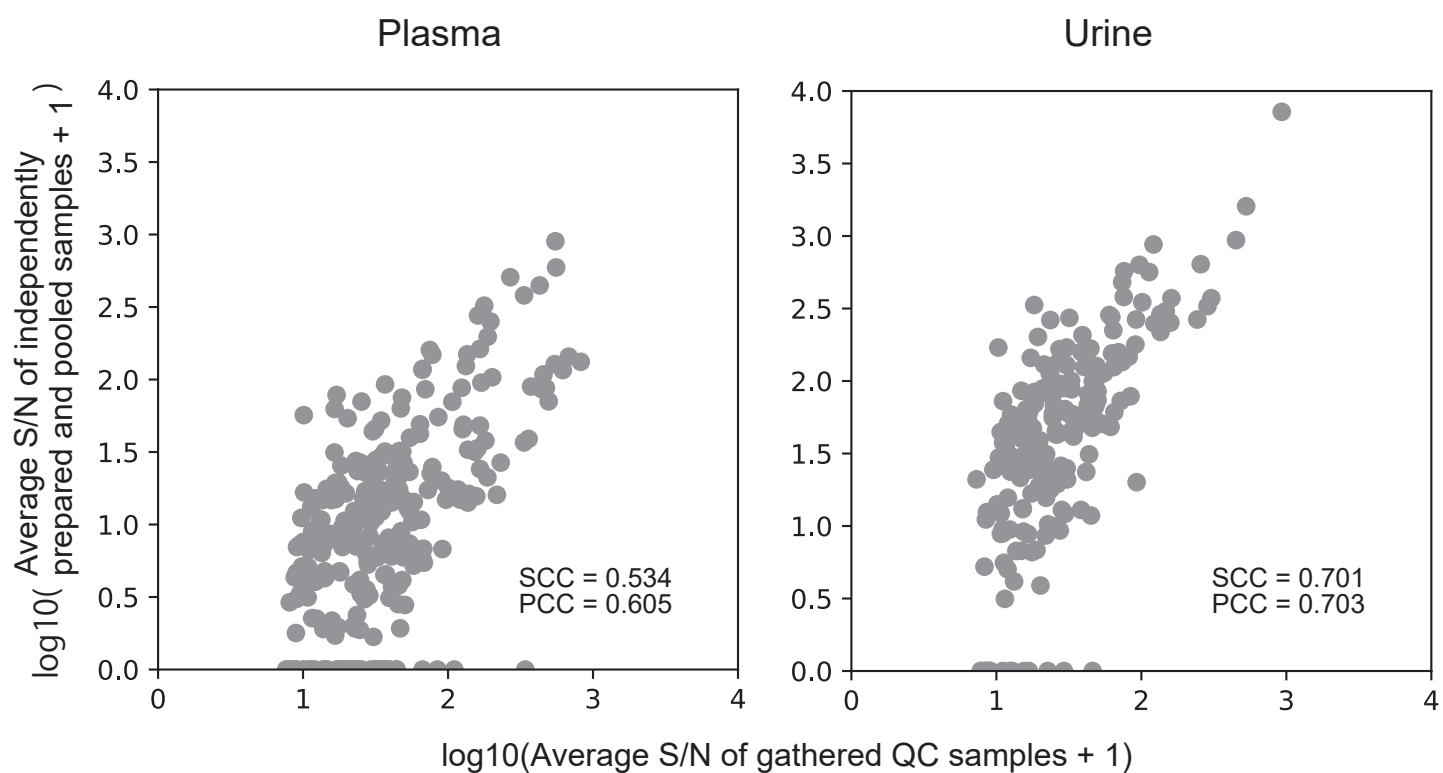
Supplemental Figure S1: Procedure used to dilute pooled plasma samples



Supplemental Figure S2: Procedure used to dilute of pooled urine samples



Supplemental Figure S3: Relationship between detection rates of the peaks among the gathered quality control (QC) samples and their signal-to-noise (S/N) ratios



Supplemental Figure S4: Correlation between average signal-to-noise (S/N) ratios of the peaks in the gathered quality control (QC) samples and those in independently prepared and pooled samples