

Figure S1. Time to successful CTO guidewire crossing depending on number of points in (a) J-CTO_{CA}, (b) CT-RECTOR, (c) KCCT, (d) J-CTO_{CCTA}, and (e) RECHARGE_{CCTA} scoring systems.

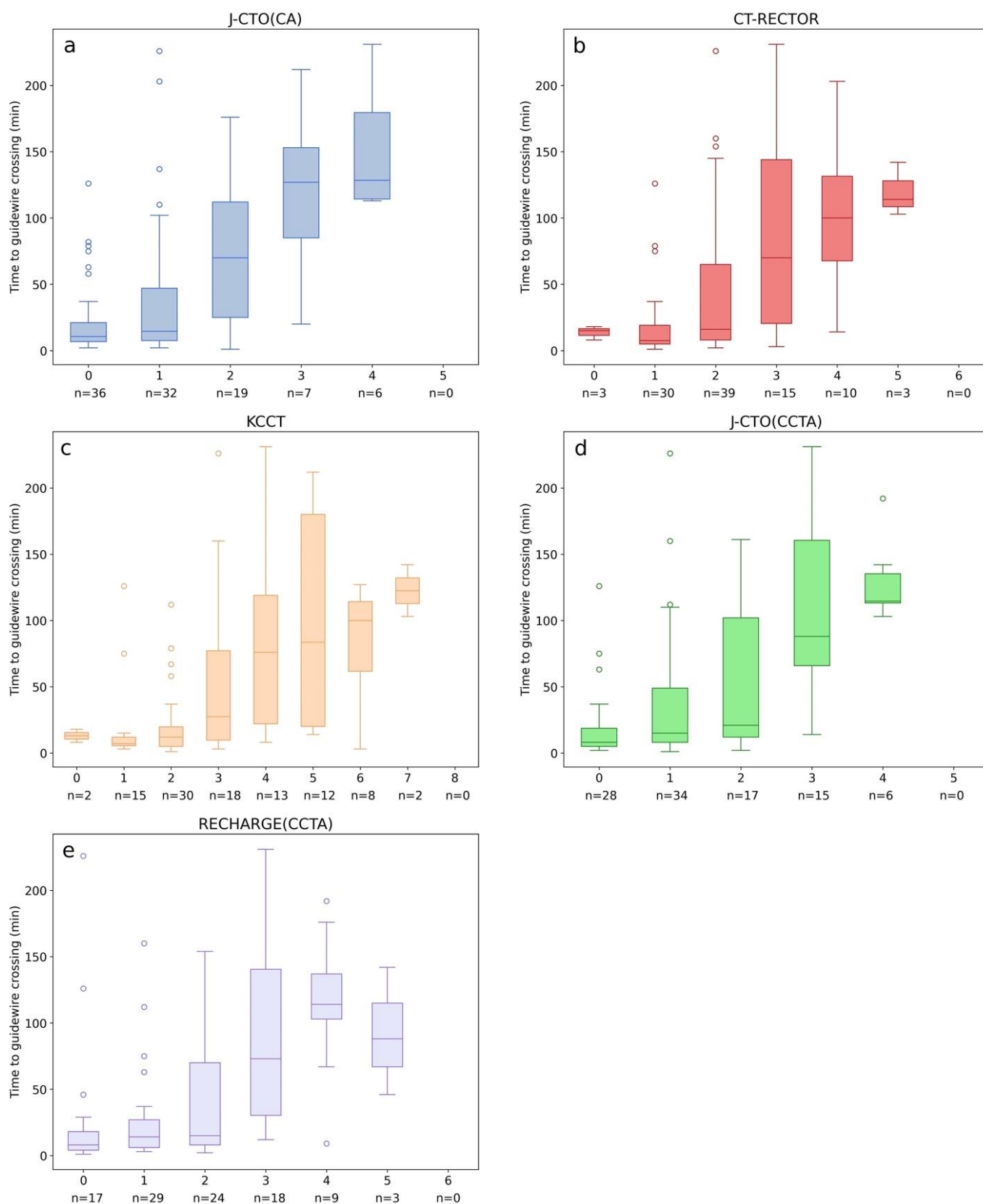


Figure S2. Time-efficient guidewire crossing and final procedural success rates depending on number of points in (a) J-CTO_{CA}, (b) CT-RECTOR, (c) KCCT, (d) J-CTO_{CCTA}, and (e) RECHARGE_{CCTA} scoring systems.

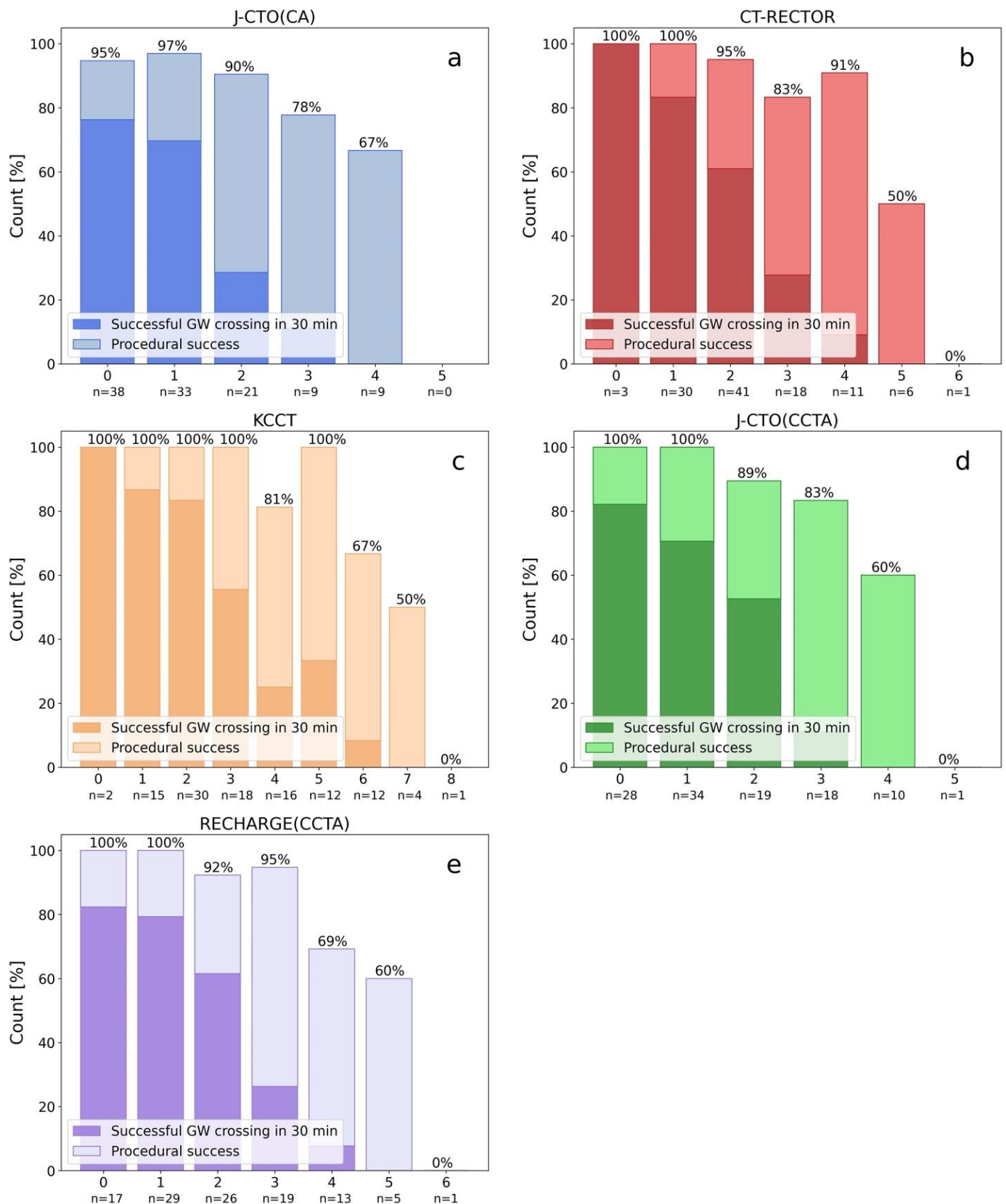


Figure S3. Time-efficient guidewire crossing and final procedural success rates depending on difficulty category based on (a) J-CTO_{CA}, (b) CT-RECTOR, (c) KCCT, (d) J-CTO_{CCTA}, and (e) RECHARGE_{CCTA} scoring systems.

