

# Supplementary Material

## Trends in Medical and Device Therapies Following Incident Heart Failure in Denmark during 1996–2019: A Nationwide Register-Based Follow-Up Study

Asbjørn Ettrup-Christensen <sup>1</sup>, Jawad H. Butt <sup>2</sup>, Mikkel Porsborg Andersen <sup>3</sup>, Maurizio Sessa <sup>4,\*</sup>, Christoffer Polcwiartek <sup>1</sup>, Emil L. Fosbøl <sup>2</sup>, Rasmus Rørth <sup>2</sup>, Søren L. Kristensen <sup>2</sup>, Christian Torp-Pedersen <sup>3</sup>, Lars Køber <sup>2</sup>, Morten Schou <sup>5</sup>, Bhupendar Tayal <sup>6</sup>, Peter Søgaard <sup>1</sup> and Kristian Kragholm <sup>1,7</sup>

<sup>1</sup> Department of Cardiology, Aalborg University Hospital, 9000 Aalborg, Denmark; a.ettrupchristensen@rn.dk (A.E.-C.); c.polcwiartek@rn.dk (C.P.); p.sogaard@rn.dk (P.S.); kdk@rn.dk (K.K.)

<sup>2</sup> Department of Cardiology, Rigshospitalet, Copenhagen University Hospital, 2100 Copenhagen, Denmark; jawad\_butt91@hotmail.com (J.H.B.); emil.fosboel@regionh.dk (E.L.F.); rasmusroerth@hotmail.com (R.R.); soerenk@gmail.com (S.L.K.); lars.koeber.01@regionh.dk (L.K.)

<sup>3</sup> Department of Cardiology, Nordsjællands Hospital, 3400 Hillerød, Denmark; mikkel.porsborg.andersen@regionh.dk (M.P.A.); ctp@sund.ku.dk (C.T.-P.)

<sup>4</sup> Department of Drug Design and Pharmacology, University of Copenhagen, 1172 Copenhagen, Denmark

<sup>5</sup> Department of Cardiology, Herlev-Gentofte Hospital, Copenhagen University Hospital, 2100 Copenhagen, Denmark; morten.schou.04@regionh.dk

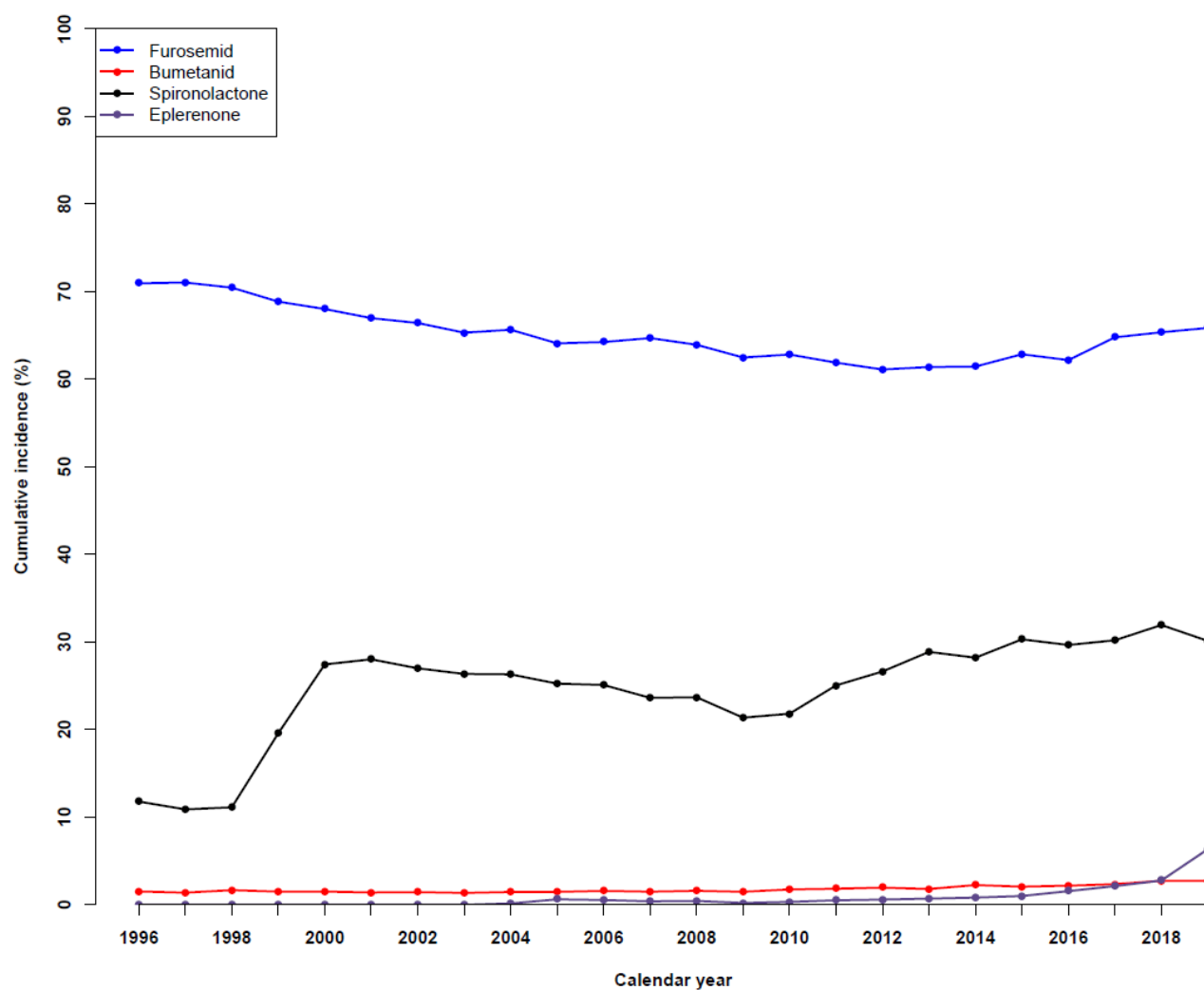
<sup>6</sup> Department of Cardiology, Houston Methodist Hospital, Houston, TX 77030, USA; bhupendar.tayal@gmail.com

<sup>7</sup> Unit of Clinical Biostatistics and Epidemiology, Aalborg University Hospital, 9000 Aalborg, Denmark

\* Correspondence: maurizio.sessa@sund.ku.dk

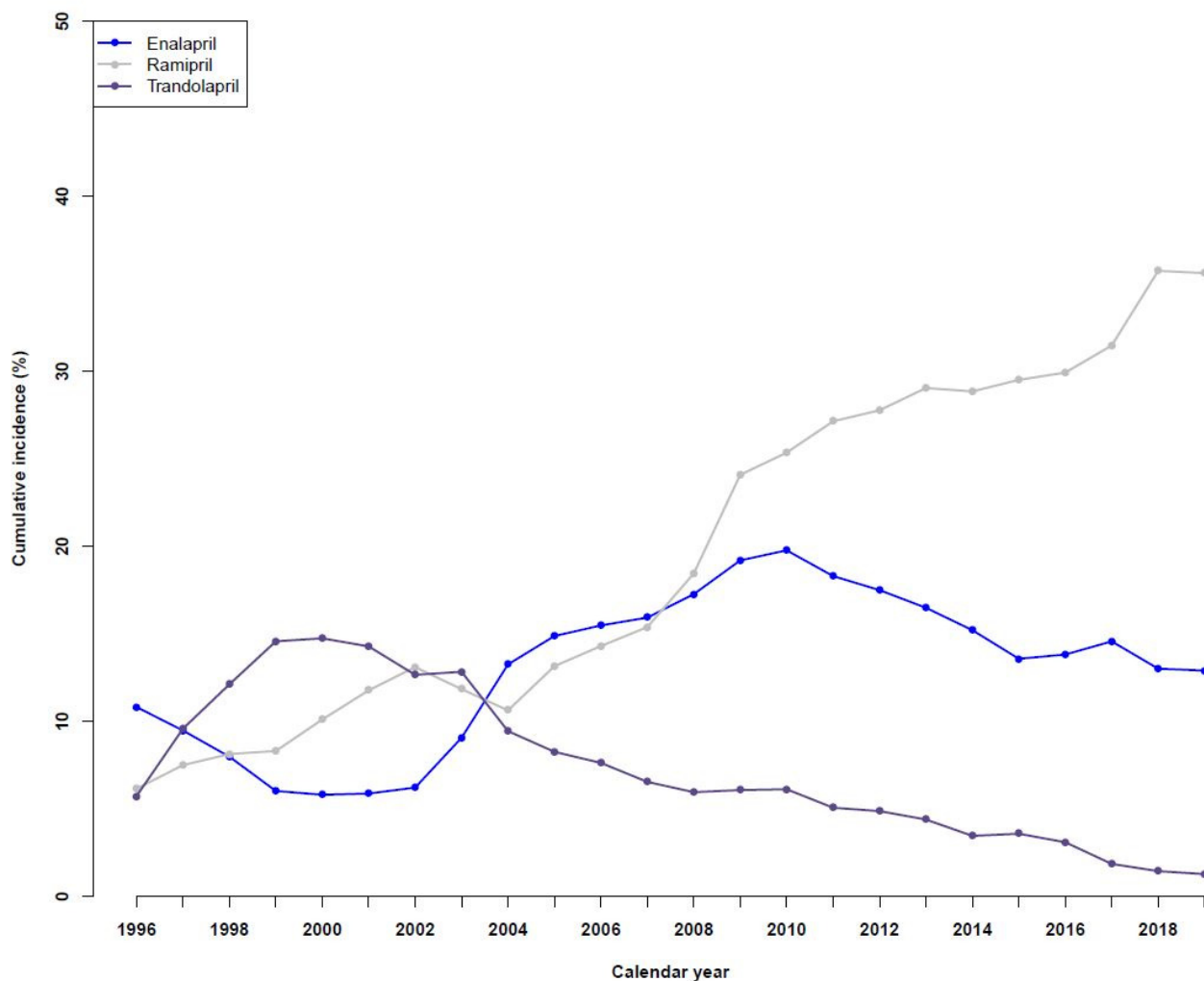
## Supplementary Figure S1

Temporal trends in guideline-based heart failure medical therapies for diuretics during the period 1996 to 2019.



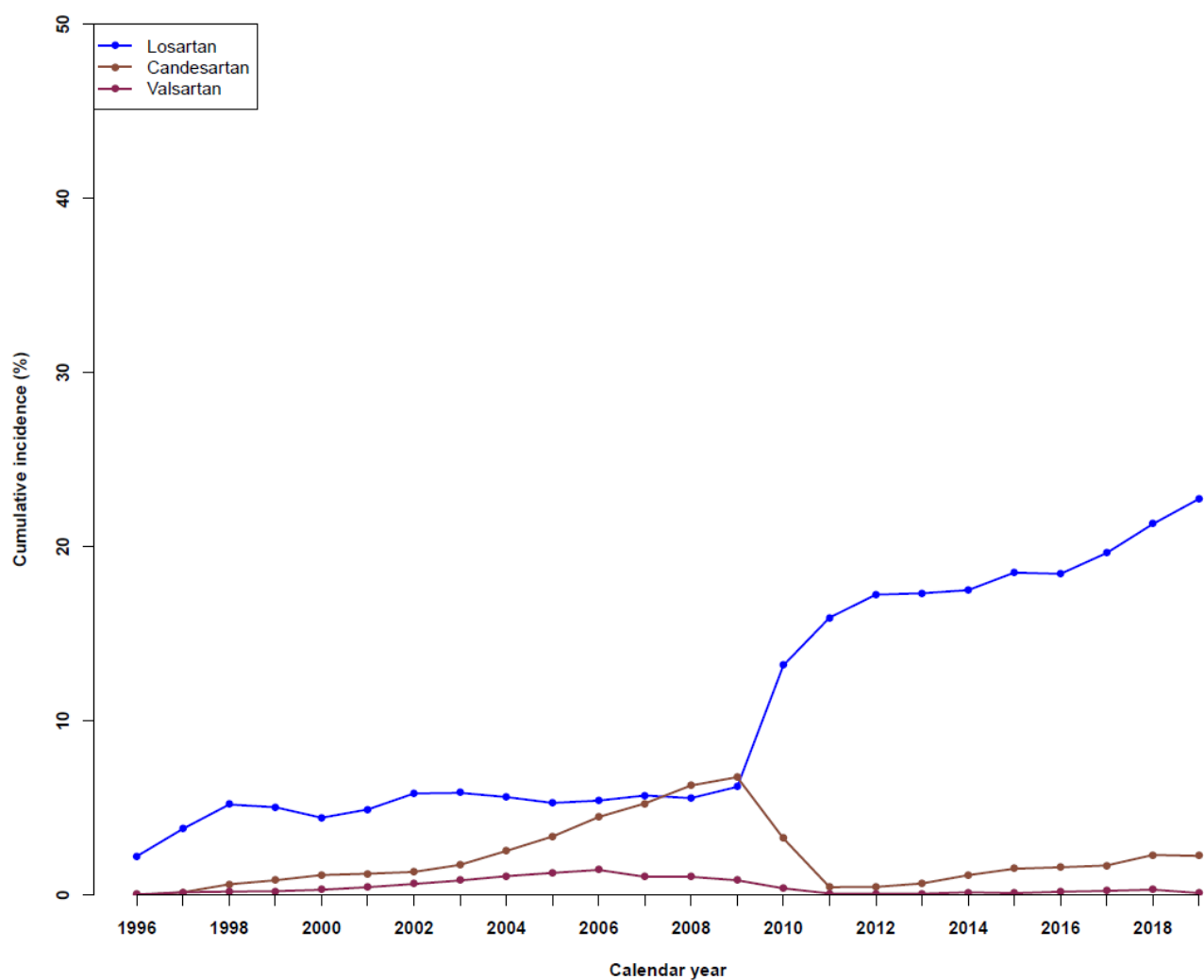
## Supplementary Figure S2

Temporal trends in guideline-based heart failure medical therapies for angiotensin converting enzyme inhibitors during the period 1996 to 2019.



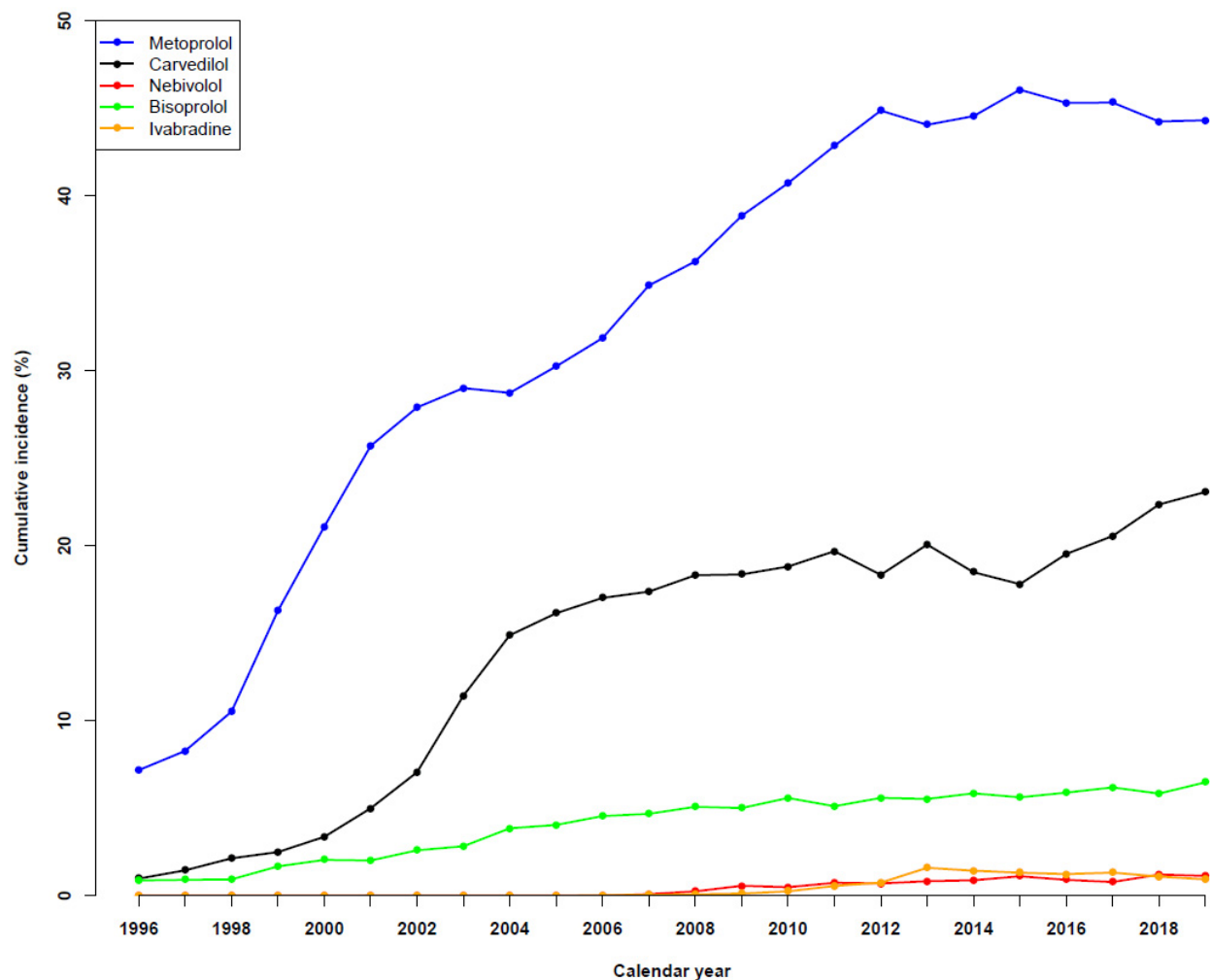
## Supplementary Figure S3

Temporal trends in guideline-based heart failure medical therapies for angiotensin II receptor antagonists during the period 1996 to 2019.



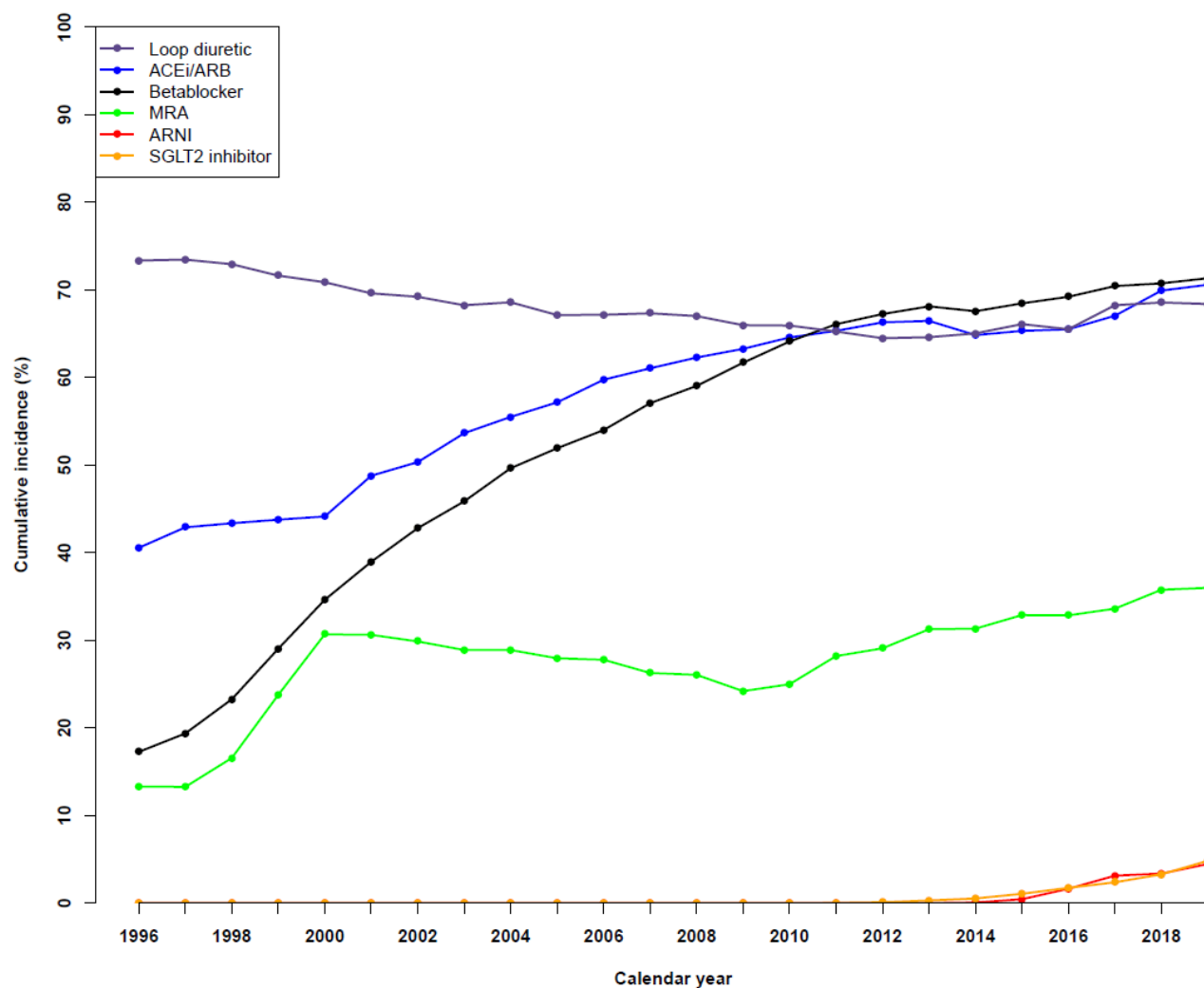
## Supplementary Figure S4

Temporal trends in guideline-based heart failure medical therapies for beta-blocker or ivabradine therapy during the period 1996 to 2019.



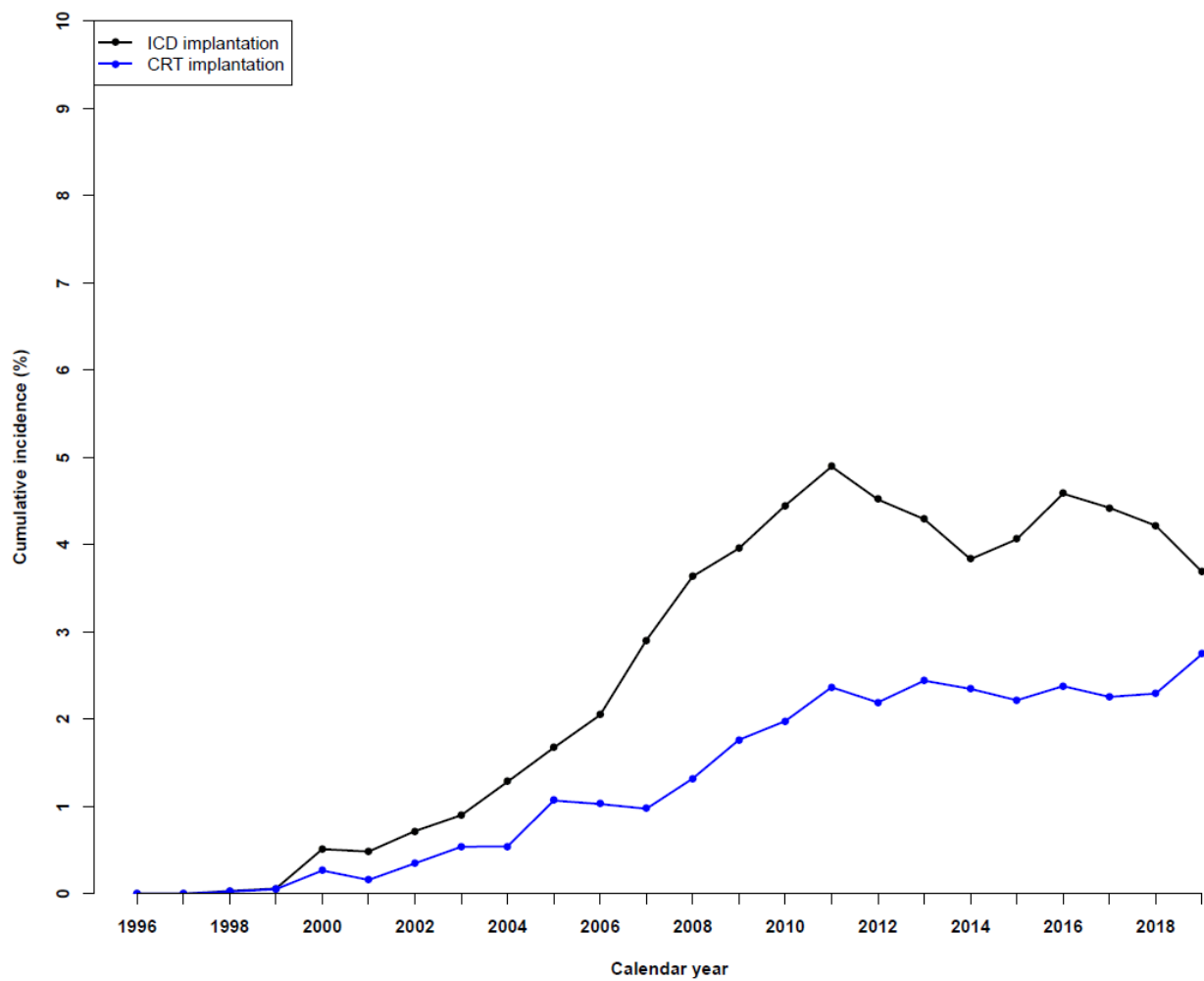
## Supplementary Figure S5

Temporal trends in guideline-based medical therapies up to two years after heart failure diagnosis during the period 1996 to 2019.



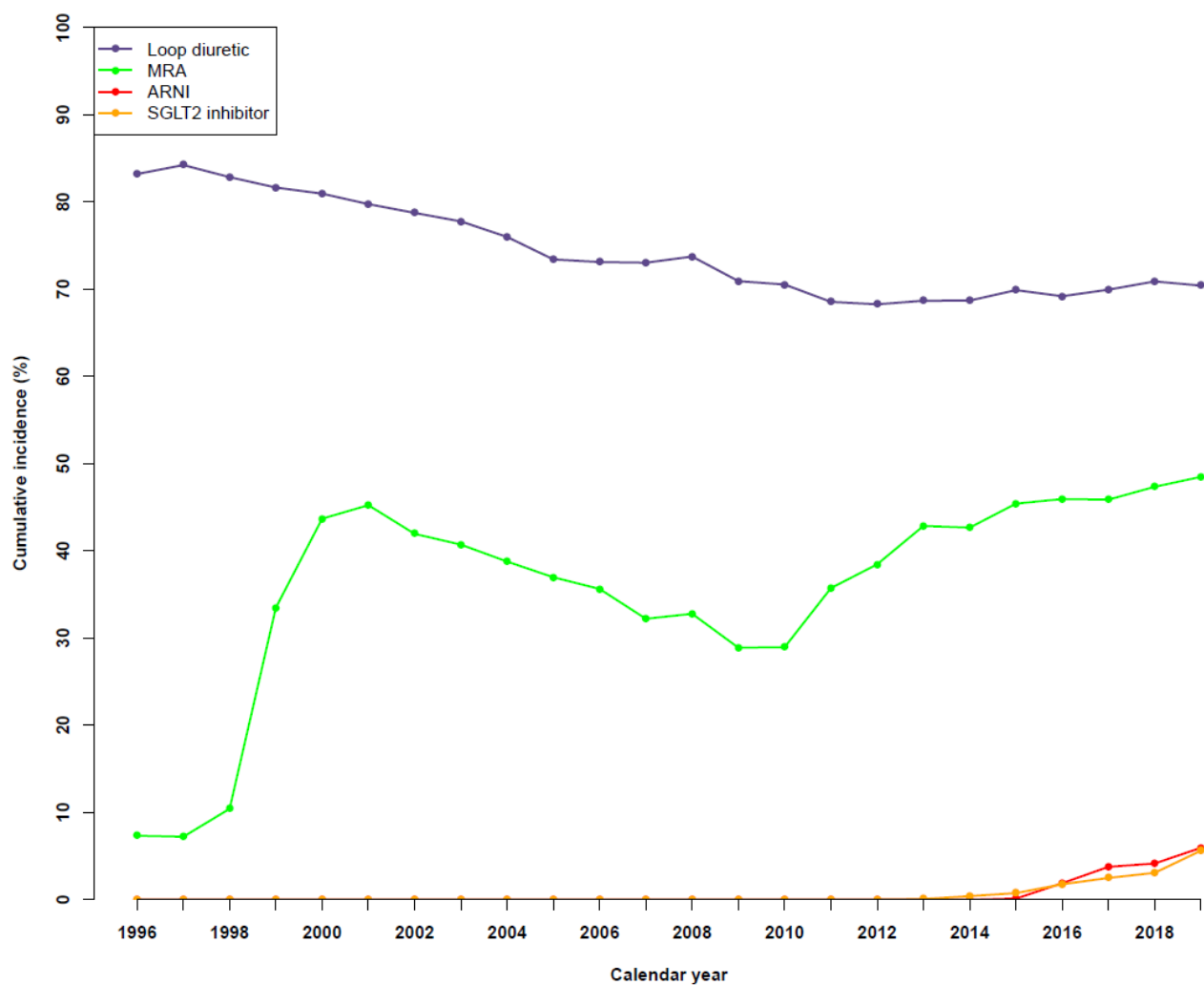
## Supplemental Figure S6

Temporal trends in device therapies up to two years after heart failure diagnosis during the period 1996 to 2019.



## Supplementary Figure S7

Temporal trends in guideline-based heart failure medical therapies among patients treated with a combination of a beta-blocker and an ACEi/ARB during the period 1996 to 2019.





## Supplementary Figure S8

Temporal trends in device therapies among patients treated with a combination of a beta-blocker and an ACEi/ARB during the period 1996 to 2019.

