

DNA Barcoding Unveils New Species of the Sexually Dimorphic Genus *Anteon* Jurine (Hymenoptera, Dryinidae) from China

Huayan Chen ^{1,*}, Massimo Olmi ², Frode Ødegaard ³, Leonardo Capradossi ⁴ and Jingxian Liu ⁵

¹ Key Laboratory of Plant Resources Conservation and Sustainable Utilization, South China Botanical Garden, Chinese Academy of Sciences, Guangzhou 510650, China

² Tropical Entomology Research Center, Via De Gasperi 10, 01100 Viterbo, Italy; olmi@unitus.it

³ Department of Natural History, Norwegian University of Science and Technology (NTNU), NO-7491 Trondheim, Norway; frode.odegaard@ntnu.no

⁴ Independent Researcher, 01017 Tuscania, Italy; leonardocapradossi.lc@gmail.com

⁵ Department of Entomology, South China Agricultural University, Guangzhou 510642, China; liujingxian@scau.edu.cn

* Correspondence: huayanc@scbg.ac.cn

Supplement material

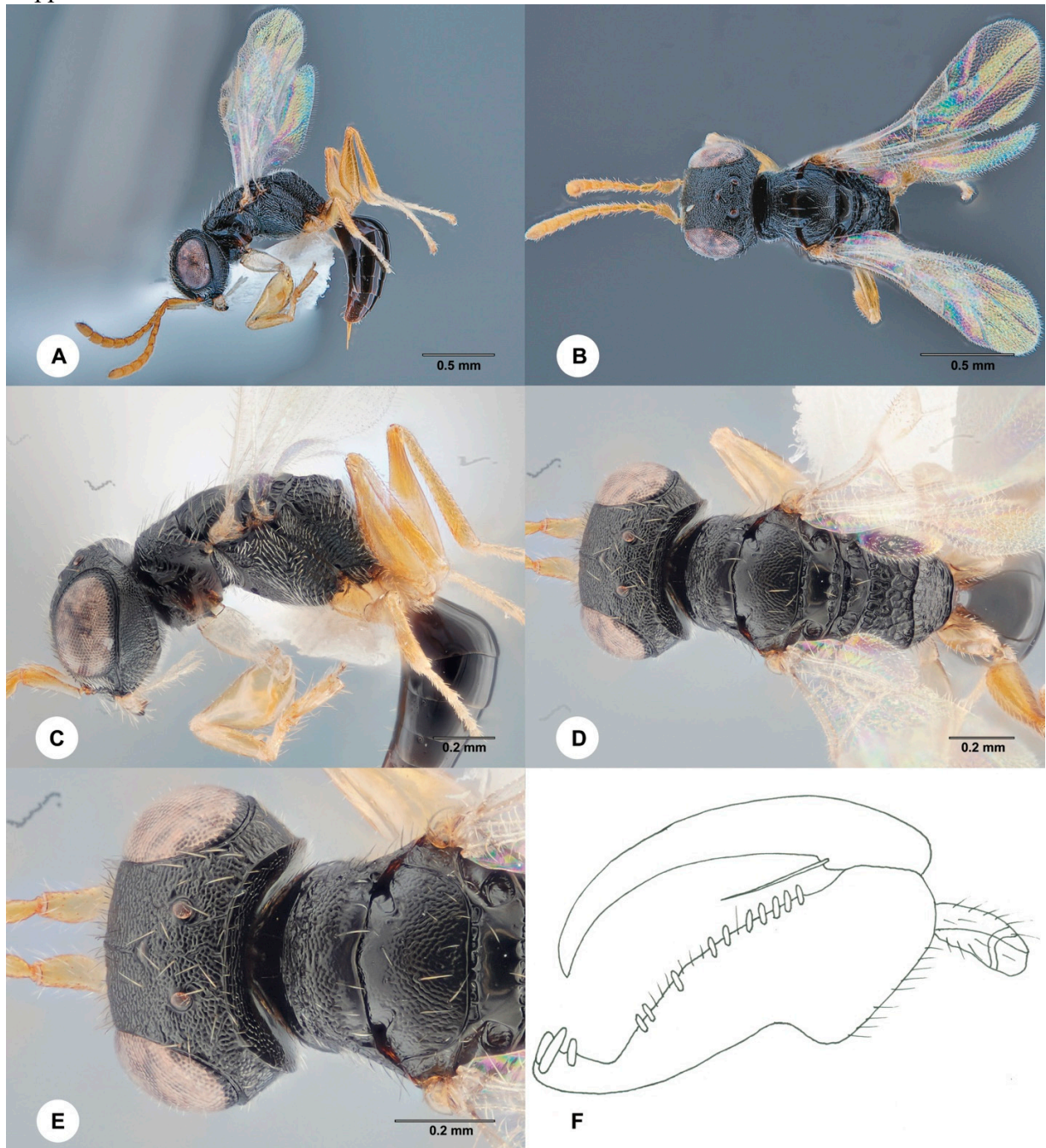


Figure S1. *Anteon abdunnouri* Olmi, 1987, female (SCAU 3040430) (A) Habitus, lateral view (B) Habitus, dorsal view (C) Head and mesosoma, lateral view (D) Head and mesosoma, dorsal view (E) Head and anterior mesosoma, dorsal view (F) Chela

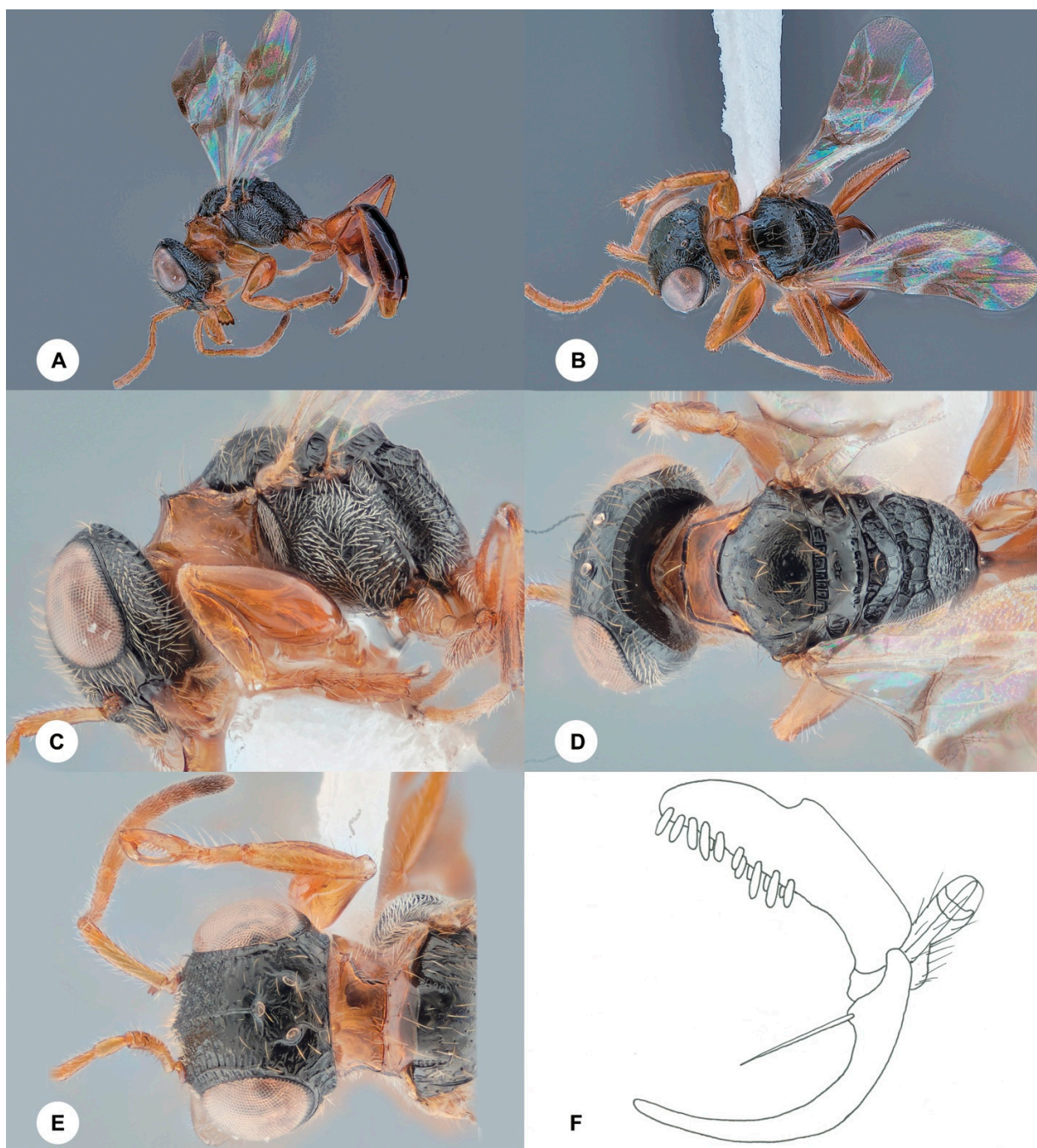


Figure S2. *Anteon achterbergi* Olmi, 1991, female (SCAU 3011714) (A) Habitus, lateral view (B) Habitus, dorsal view (C) Head and mesosoma, lateral view (D) Head and mesosoma, dorsal view (E) Head and anterior mesosoma, dorsal view (F) Chela

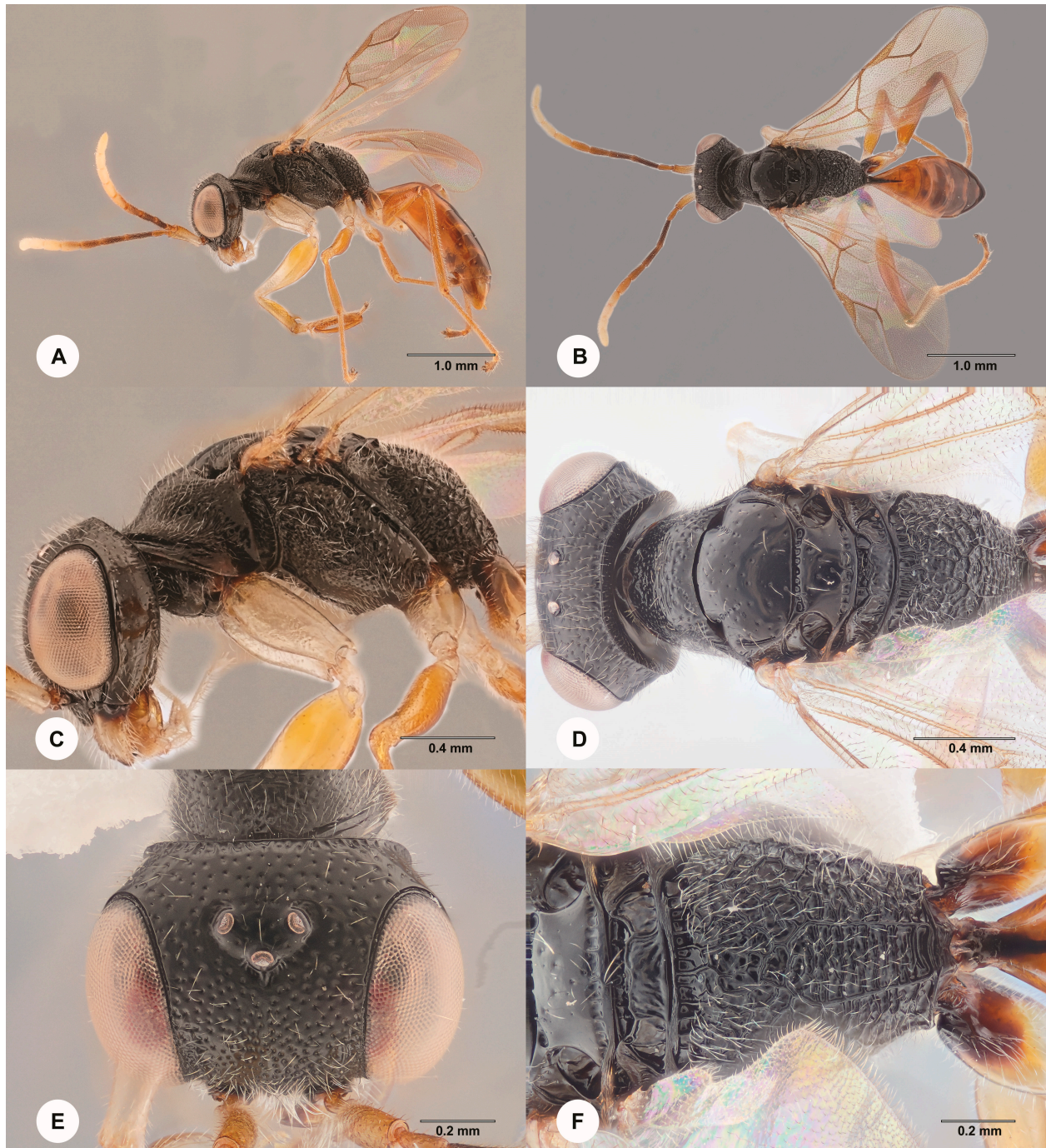


Figure S3. *Anteon blanduscutum* Xu, He & Rui, 1996, female (SCAU 3011677) (A) Habitus, lateral view (B) Habitus, dorsal view (C) Head and mesosoma, lateral view (D) Head and mesosoma, dorsal view (E) Head, dorsal view (F) Propodeum, dorsal view.



Figure S4. *Anteon borneanum* Olmi, 1984, female (SCAU 3011669) (A) Habitus, lateral view (B) Habitus, dorsal view (C) Head and mesosoma, lateral view (D) Head and mesosoma, dorsal view

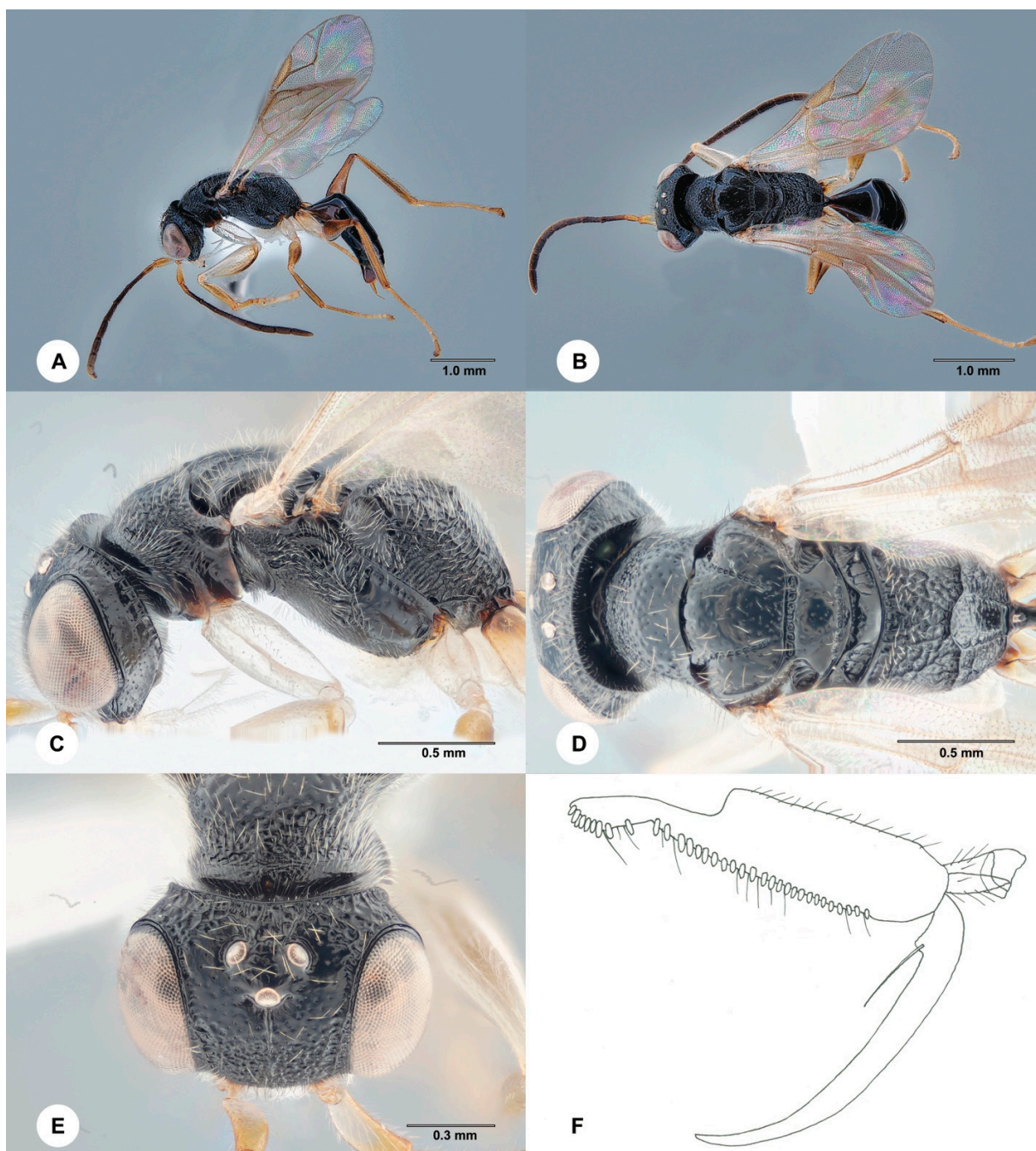


Figure S5. *Anteon confusum* Olmi, 1991, female (SCAU 3040517) (A) Habitus, lateral view (B) Habitus, dorsal view (C) Head and mesosoma, lateral view (D) Head and mesosoma, dorsal view (E) Head and anterior mesosoma, dorsal view (F) Chela

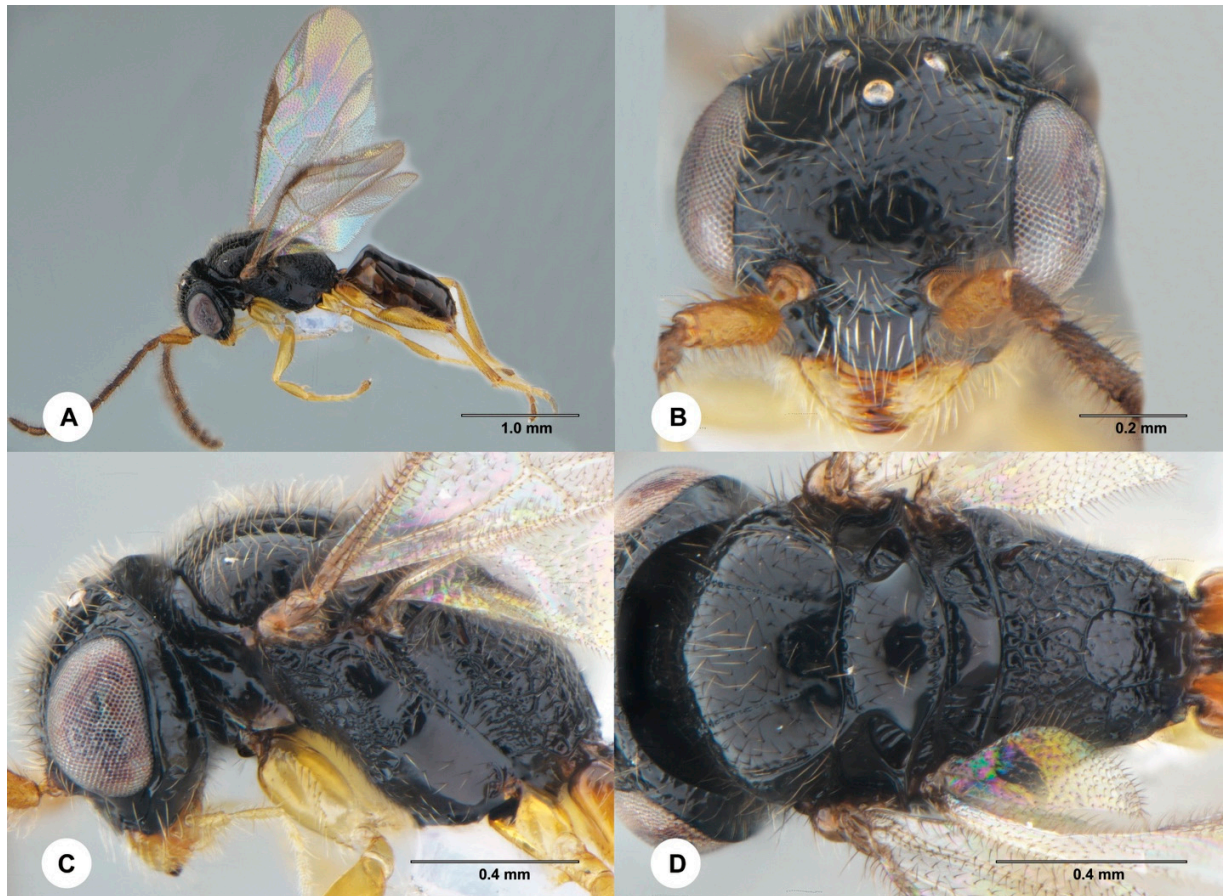


Figure S6. *Anteon confusum* Olmi, 1991, male (SCAU 3044058) (A) Habitus, lateral view (B) Habitus, dorsal view (C) Head and mesosoma, lateral view (D) Head and mesosoma, dorsal view

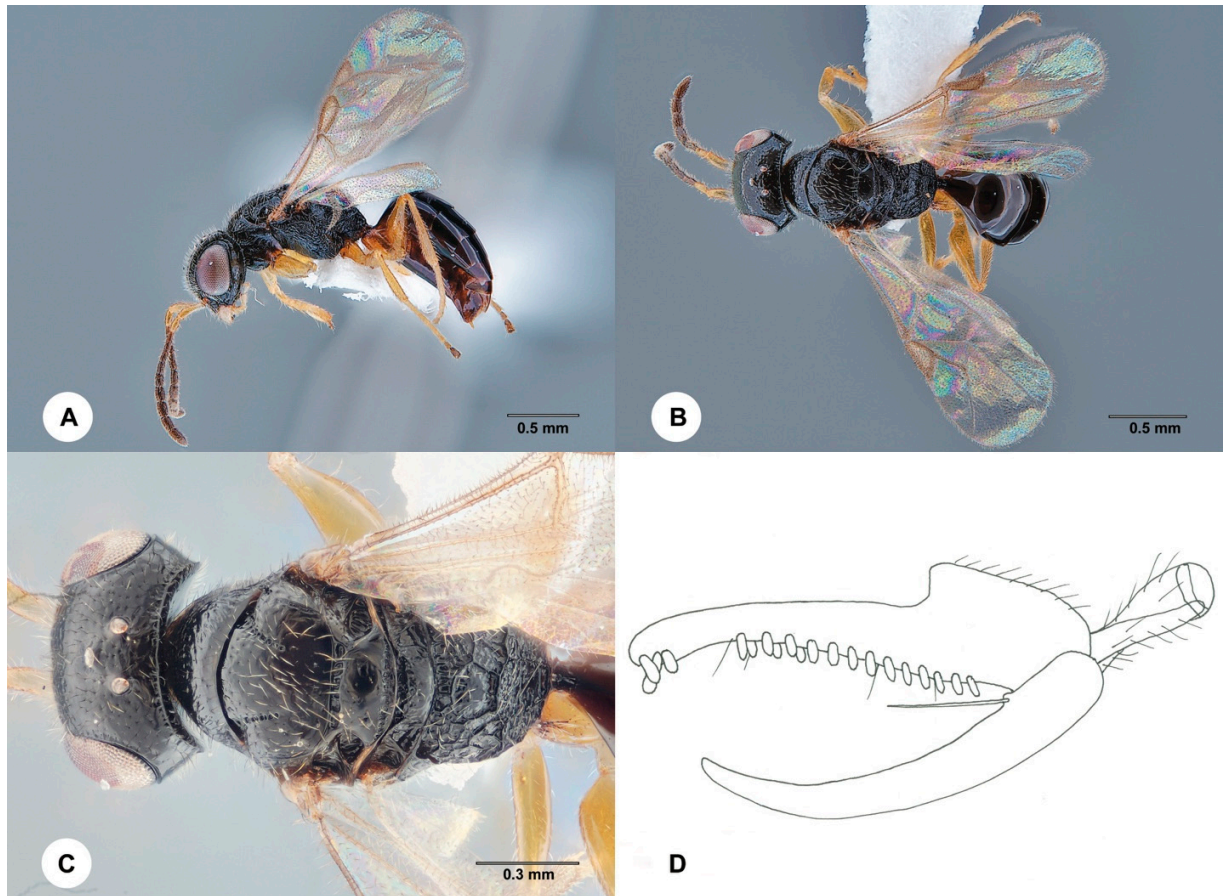


Figure S7. *Anteon exiguum* (Haupt, 1941), female (SCAU 3011621) **(A)** Habitus, lateral view **(B)** Habitus, dorsal view **(C)** Head and mesosoma, lateral view **(D)** Head and mesosoma, dorsal view **(E)** Head and anterior mesosoma, dorsal view **(F)** Chela

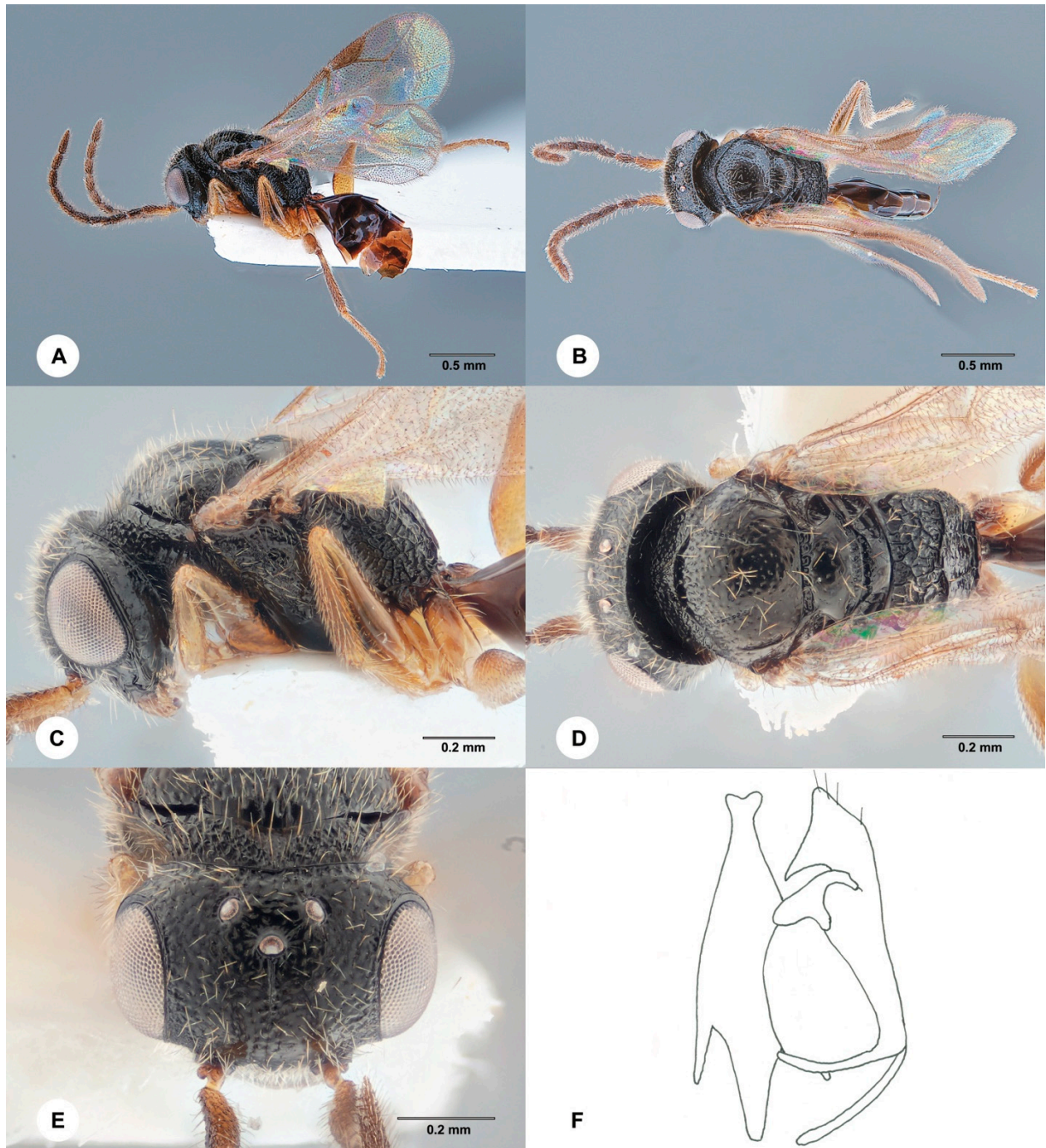


Figure S8. *Anteon fidum* Olmi, 1991, male (SCAU 3040512) (A) Habitus, lateral view (B) Habitus, dorsal view (C) Head and mesosoma, lateral view (D) Head and mesosoma, dorsal view (E) Head, dorsal view (F) Genitalia (left half removed)

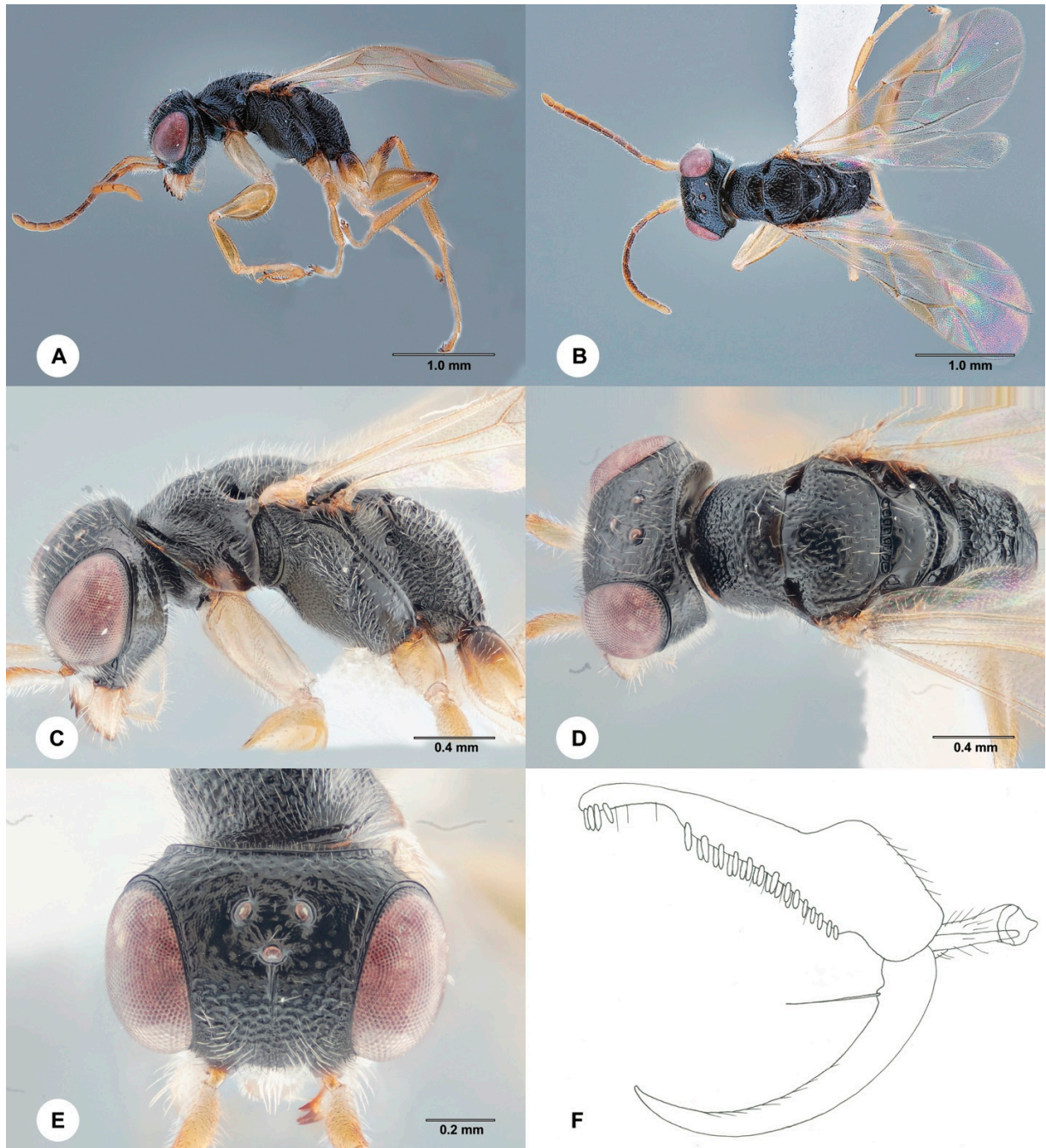


Figure S9. *Anteon funiuense* Xu, He & Olmi, 2001, female (SCAU 3040522) (A) Habitus, lateral view (B) Habitus, dorsal view (C) Head and mesosoma, lateral view (D) Head and mesosoma, dorsal view (E) Head, dorsal view (F) Chela.



Figure S10. *Anteon henanense* Xu, He & Olmi, 2001, female (SCAU 3044072) (A) Habitus, lateral view (B) Chela (C) Head, anterior view (D) Head, dorsal view (E) Mesosoma, lateral view (F) Mesosoma, dorsal view.

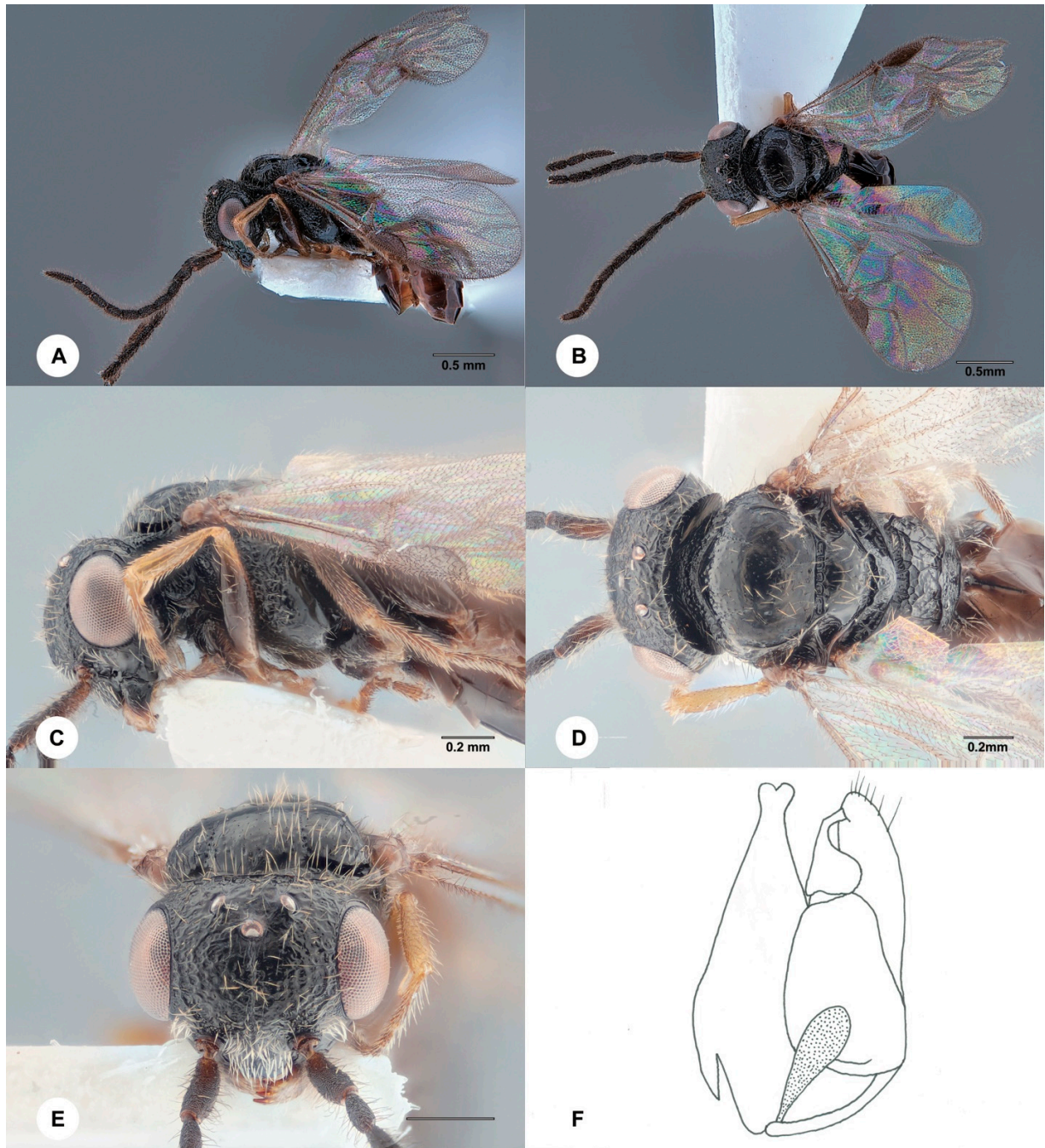


Figure S11. *Anteon henanense* Xu, He & Olmi, 2001, male (SCAU 3040511) (A) Habitus, lateral view (B) Habitus, dorsal view (C) Head and mesosoma, lateral view (D) Head and mesosoma, dorsal view (E) Head, anterior view (F) Genitalia (left half removed)

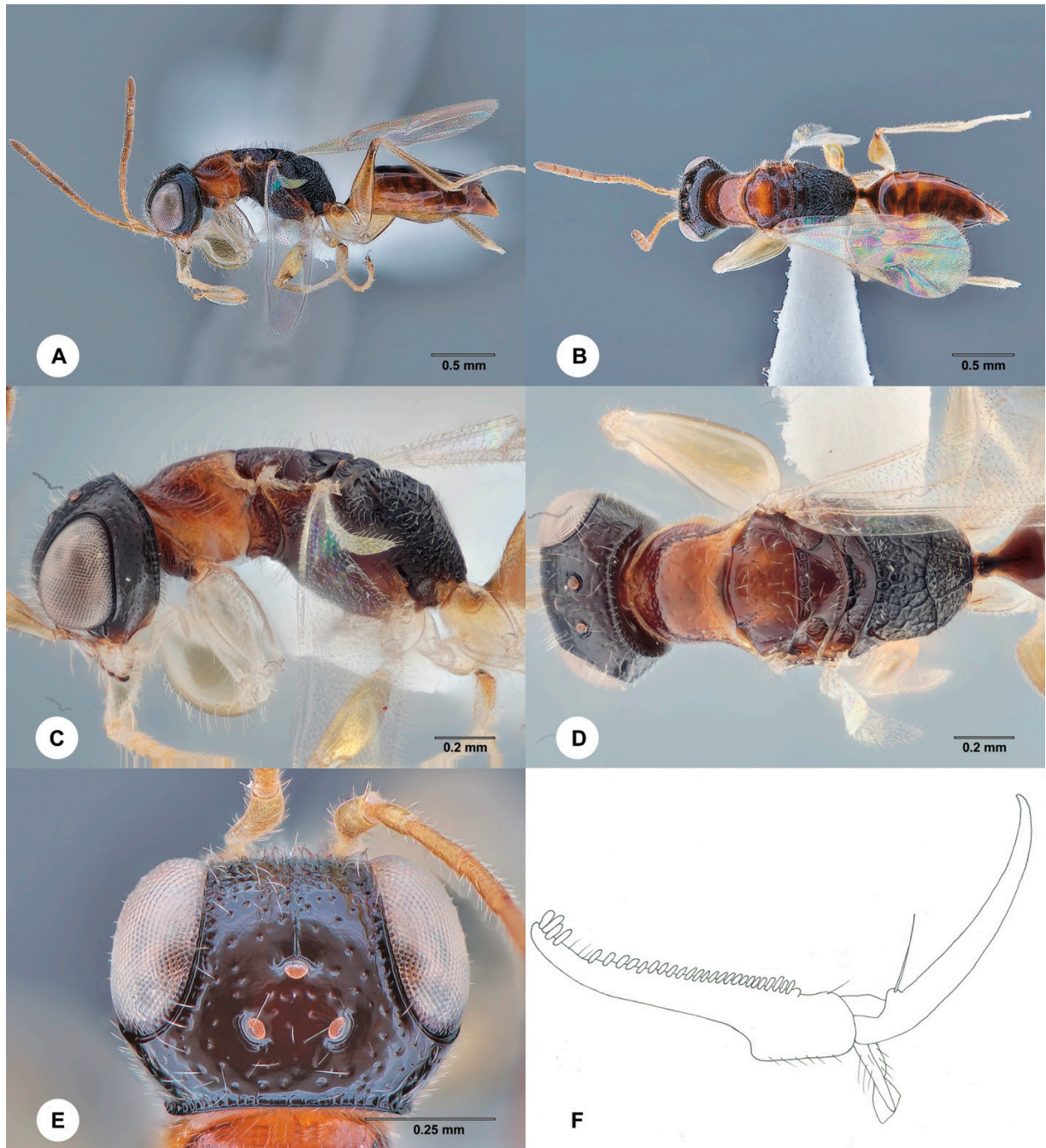


Figure S12. *Anteon hilare* Olmi, 1984, female (SCAU 3011713) (A) Habitus, lateral view (B) Habitus, dorsal view (C) Head and mesosoma, lateral view (D) Head and mesosoma, dorsal view (E) Head, dorsal view (F) Chela.

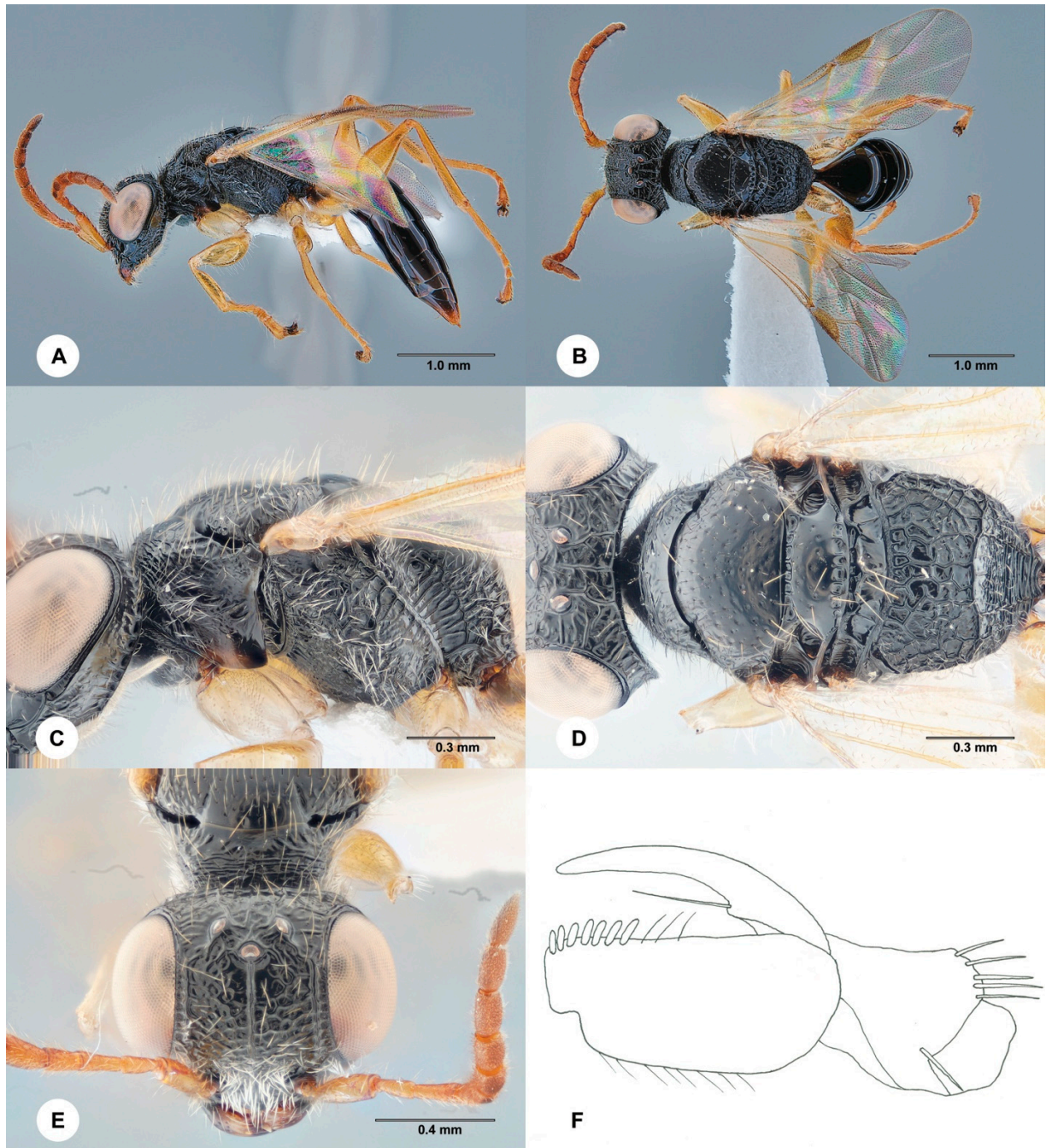


Figure S13. *Anteon hirashimai* Olmi, 1993, female (SCAU 3011676) (A) Habitus, lateral view (B) Habitus, dorsal view (C) Head and mesosoma, lateral view (D) Head and mesosoma, dorsal view (E) Head, dorsal view (F) Chela.

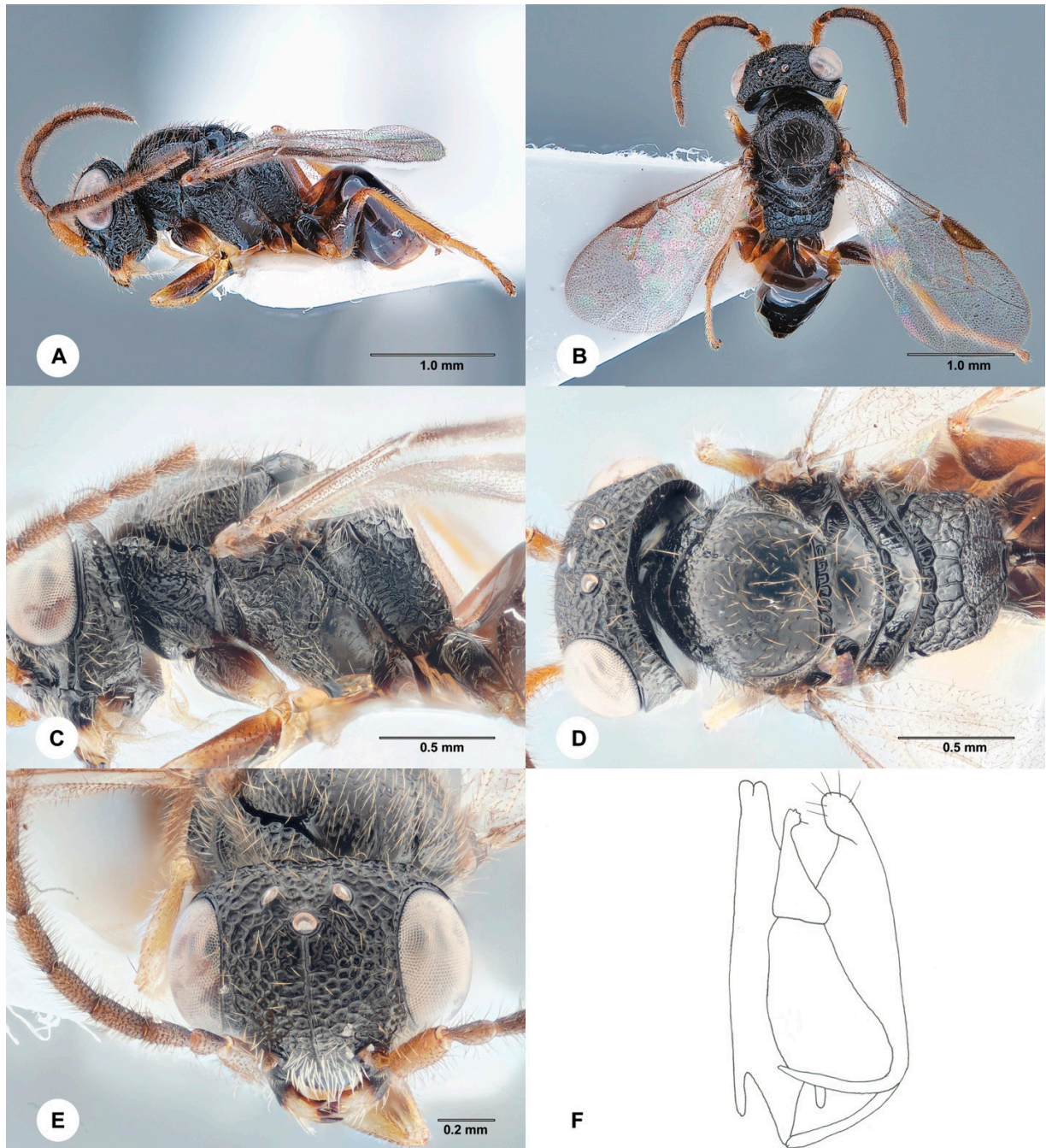


Figure S14. *Anteon mite* Olmi, 1996, male (SCAU 3040515) (A) Habitus, lateral view (B) Habitus, dorsal view (C) Head and mesosoma, lateral view (D) Head and mesosoma, dorsal view (E) Head, anterior view (F) Genitalia (left half removed).

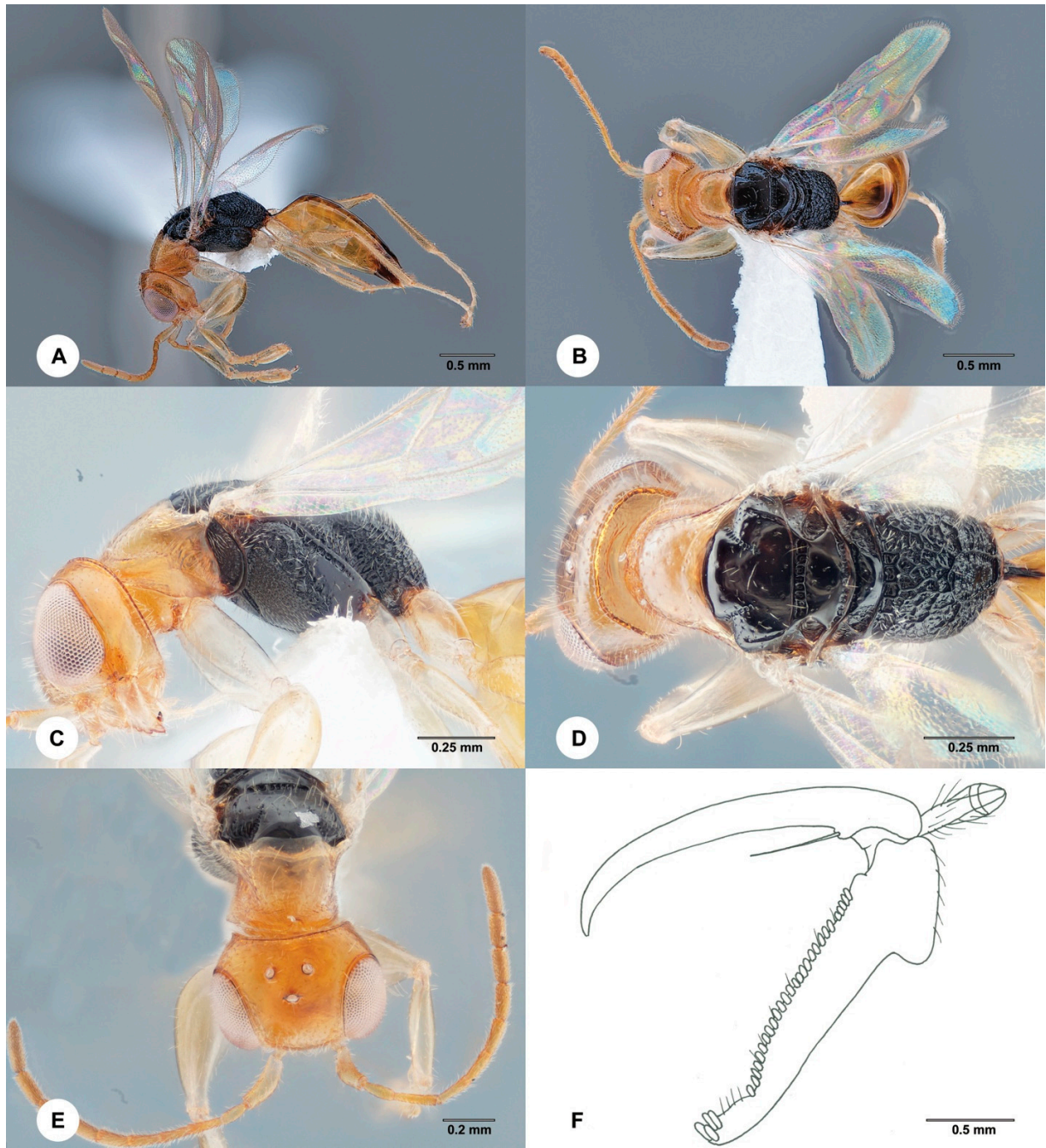


Figure S15. *Anteon multicolor* Xu, He & Olmi, 1998, female (SCAU 3011661) (A) Habitus, lateral view (B) Habitus, dorsal view (C) Head and mesosoma, lateral view (D) Head and mesosoma, dorsal view (E) Head, dorsal view (F) Chela.

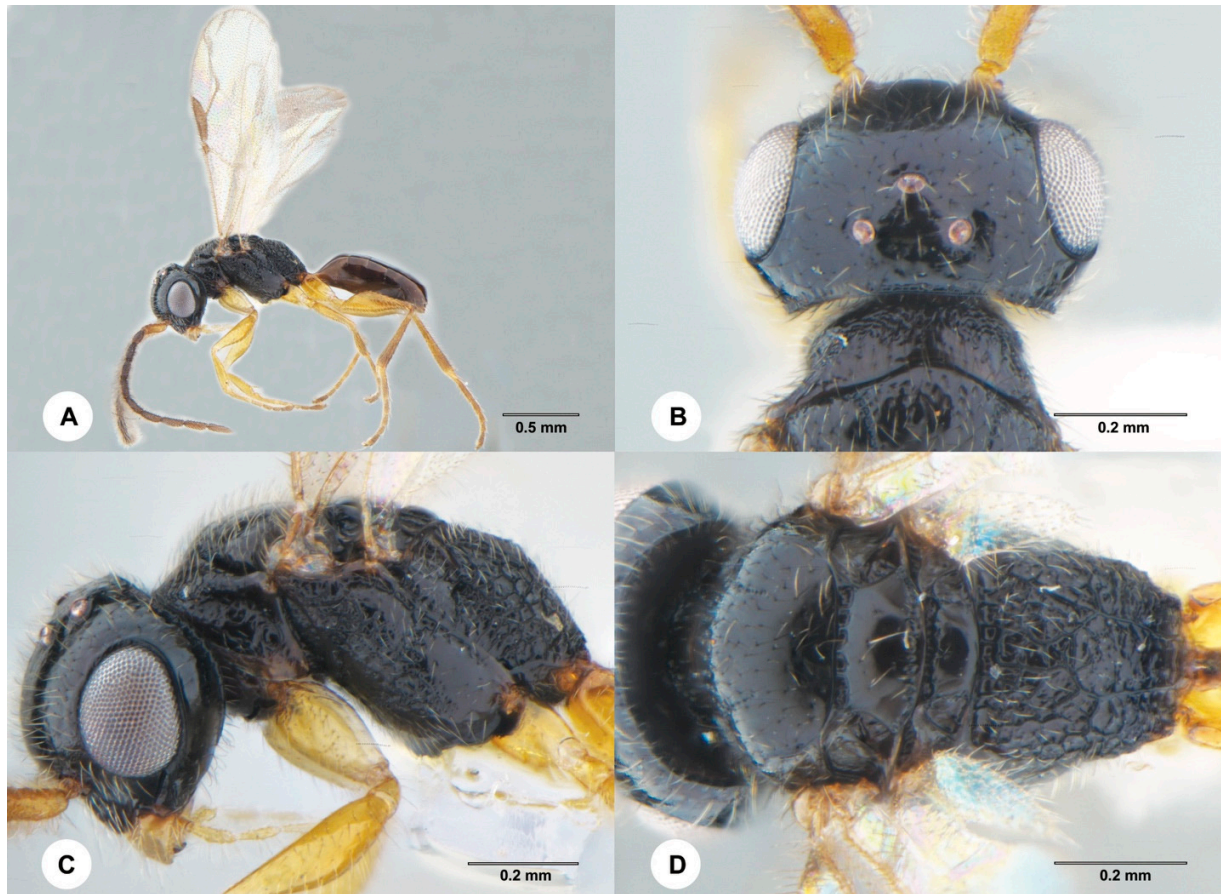


Figure S16. *Anteon multicolor* Xu, He & Olmi, 1998, male (SCAU 3044011) (A) Habitus, lateral view (B) Head, dorsal view (C) Head and mesosoma, lateral view (D) Head and mesosoma, dorsal view.

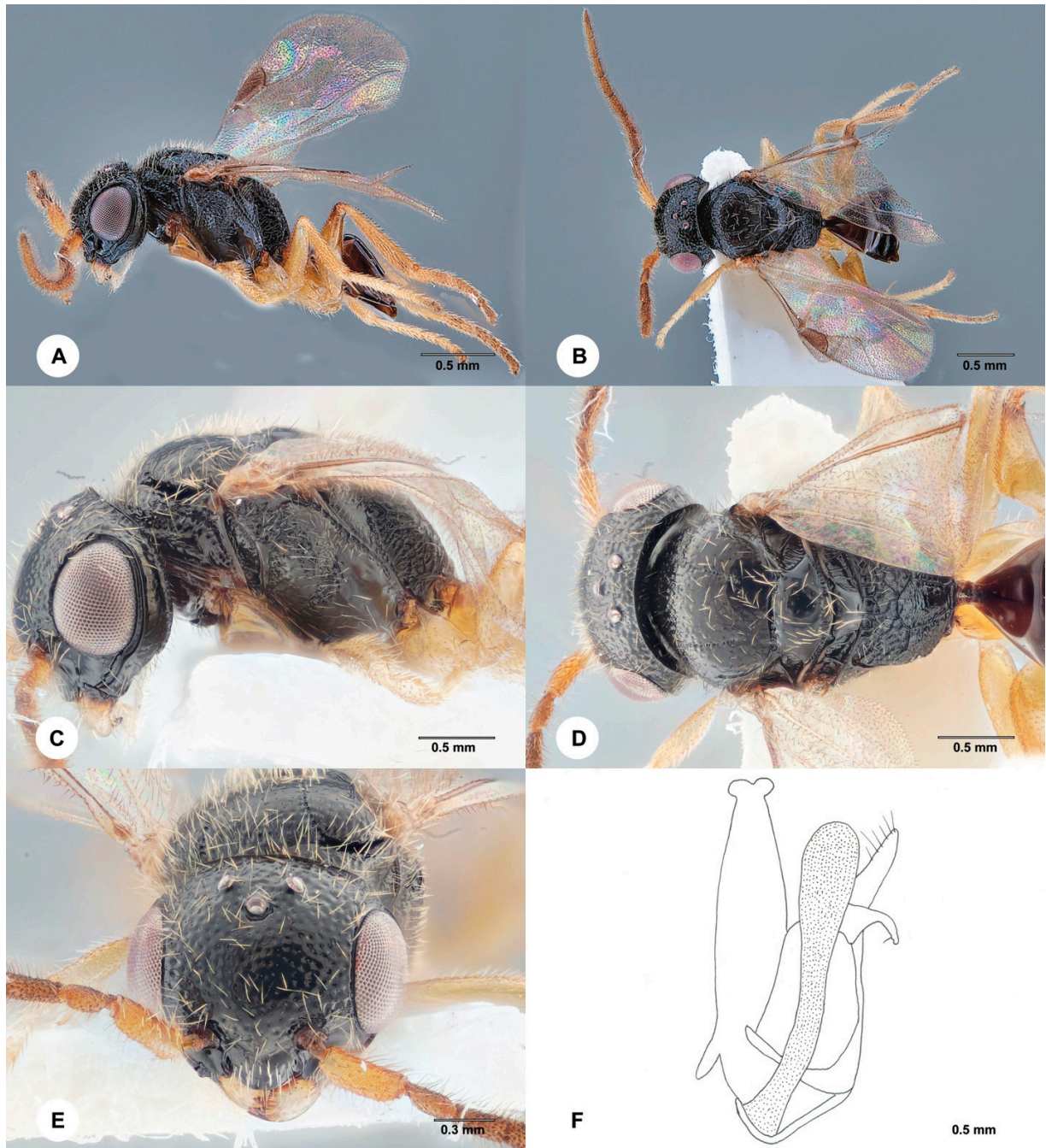


Figure S17. *Anteon munitum* Olmi, 1984, male (SCAU 3040524) (A) Habitus, lateral view (B) Habitus, dorsal view (C) Head and mesosoma, lateral view (D) Head and mesosoma, dorsal view (E) Head, anterior view (F) Genitalia (left half removed).

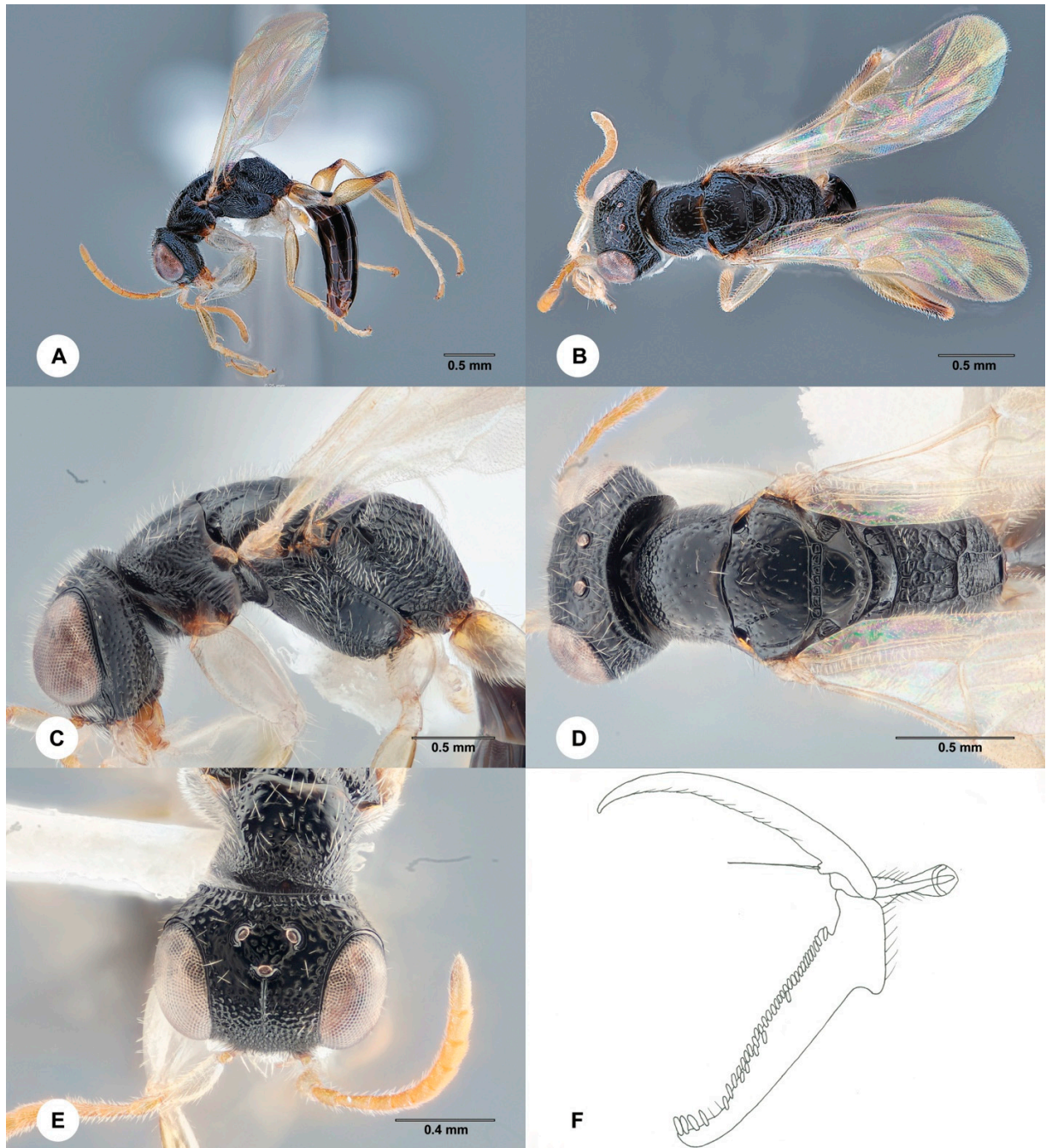


Figure S18. *Anteon naduense* Olmi 1987, female (SCAU 3040521) (A) Habitus, lateral view (B) Habitus, dorsal view (C) Head and mesosoma, lateral view (D) Head and mesosoma, dorsal view (E) Head, dorsal view (F) Chela.

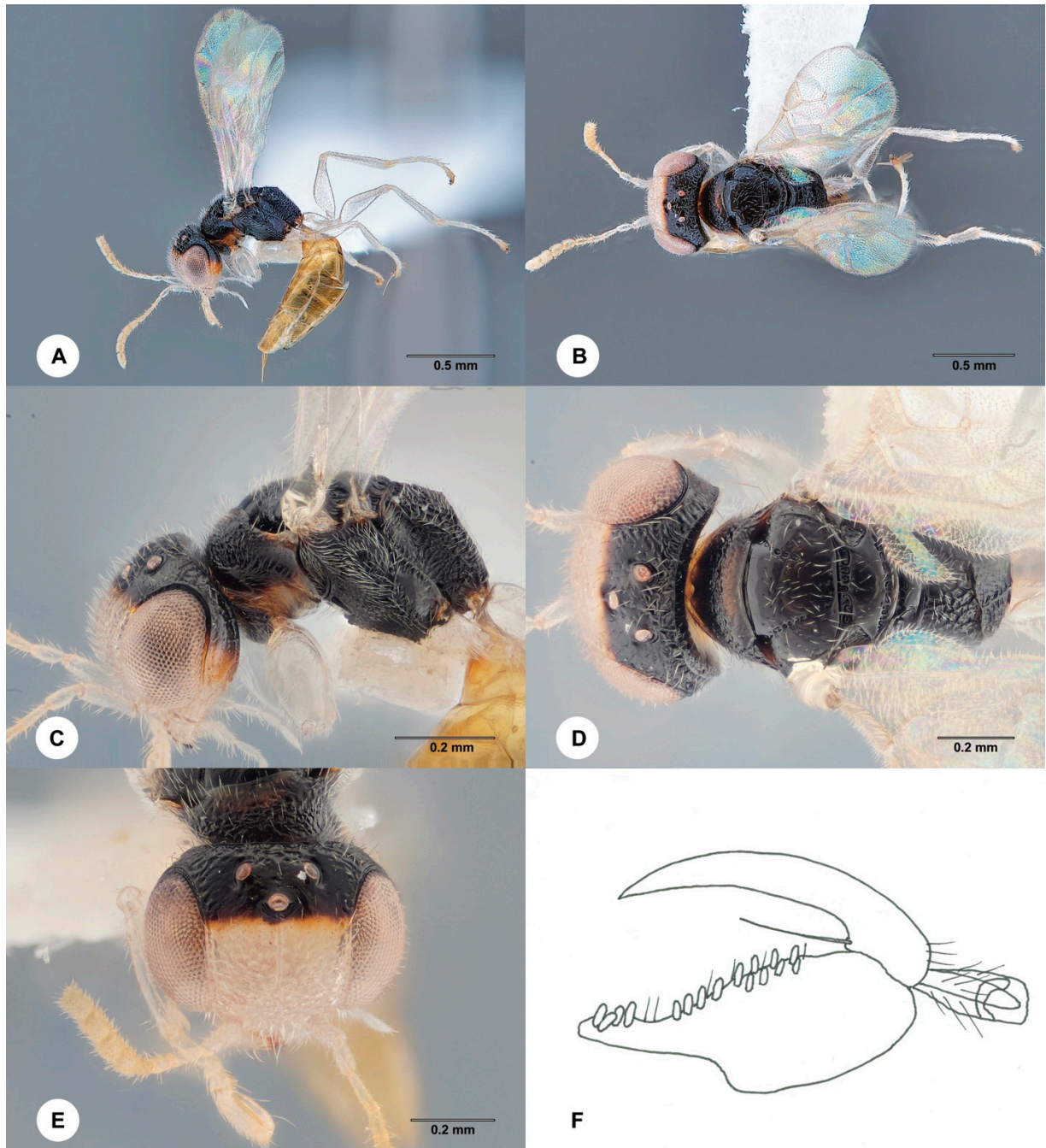


Figure S19. *Anteon nanlingense* Xu, Olmi & He, 2011, female (SCAU 3040433) (A) Habitus, lateral view (B) Habitus, dorsal view (C) Head and mesosoma, lateral view (D) Head and mesosoma, dorsal view (E) Head, anterior view (F) Chela.

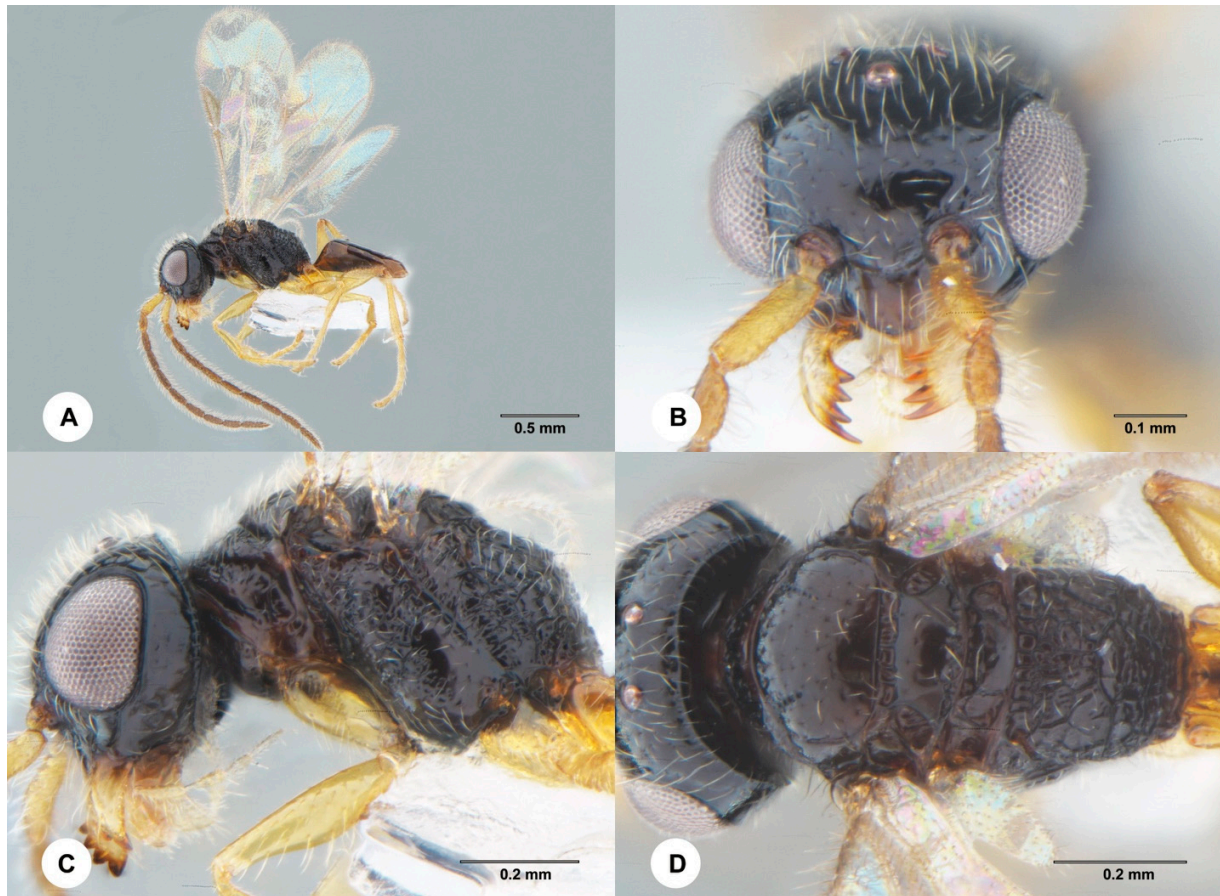


Figure S20. *Anteon nanlingense* Xu, Olmi & He, 2011, male (SCAU 3048821) (A) Habitus, lateral view (B) Head, dorsal view (C) Head and mesosoma, lateral view (D) Head and mesosoma, dorsal view.

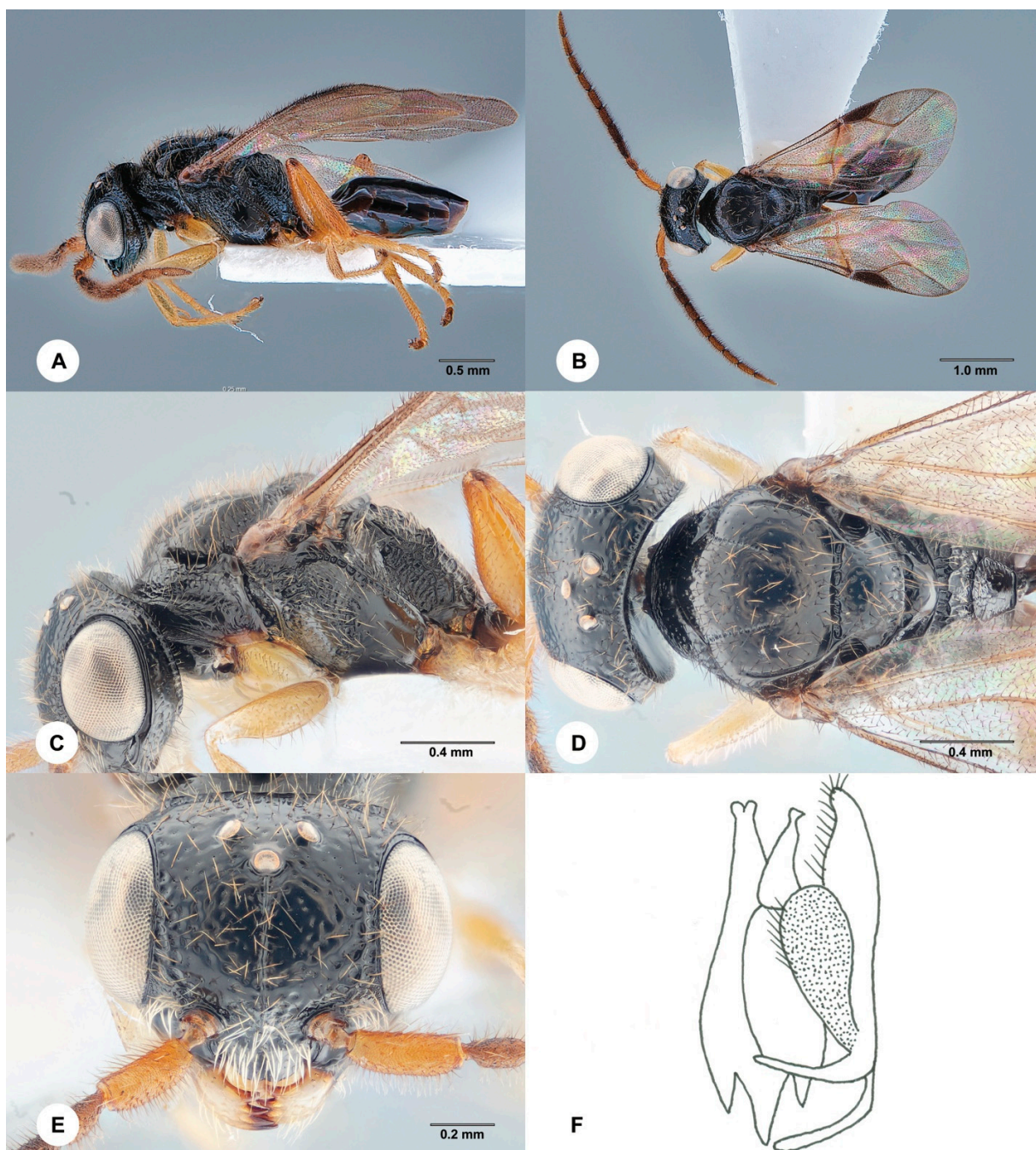


Figure S21. *Anteon pilosum* Xu, Olmi & He, 2010, male (SCAU 3040518) (A) Habitus, lateral view (B) Habitus, dorsal view (C) Head and mesosoma, lateral view (D) Head and mesosoma, dorsal view (E) Head, anterior view (F) Genitalia (left half removed).

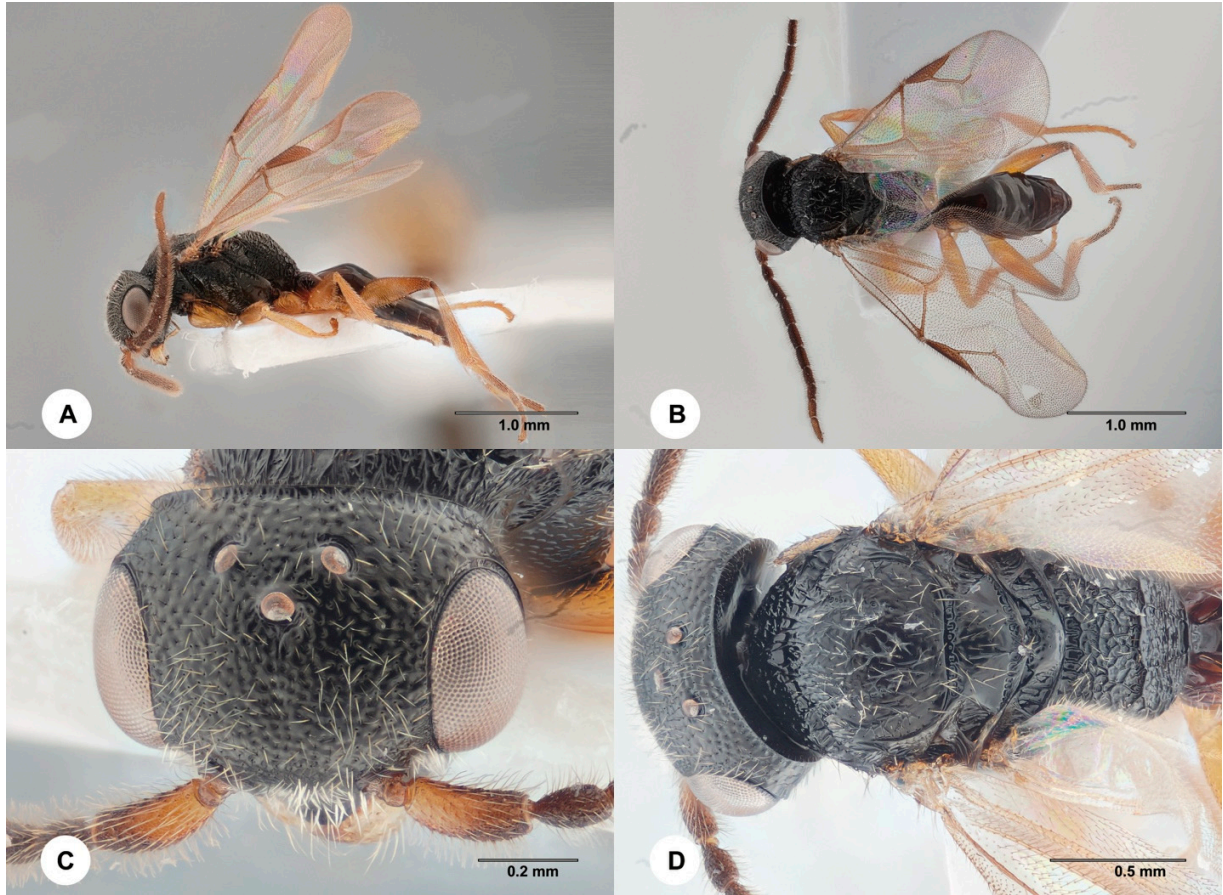


Figure S22. *Anteon priscum* Olmi, 1991, male (SCAU 3011723) (A) Habitus, lateral view (B) Habitus, dorsal view (C) Head, dorsal view (D) Head and mesosoma, dorsal view.

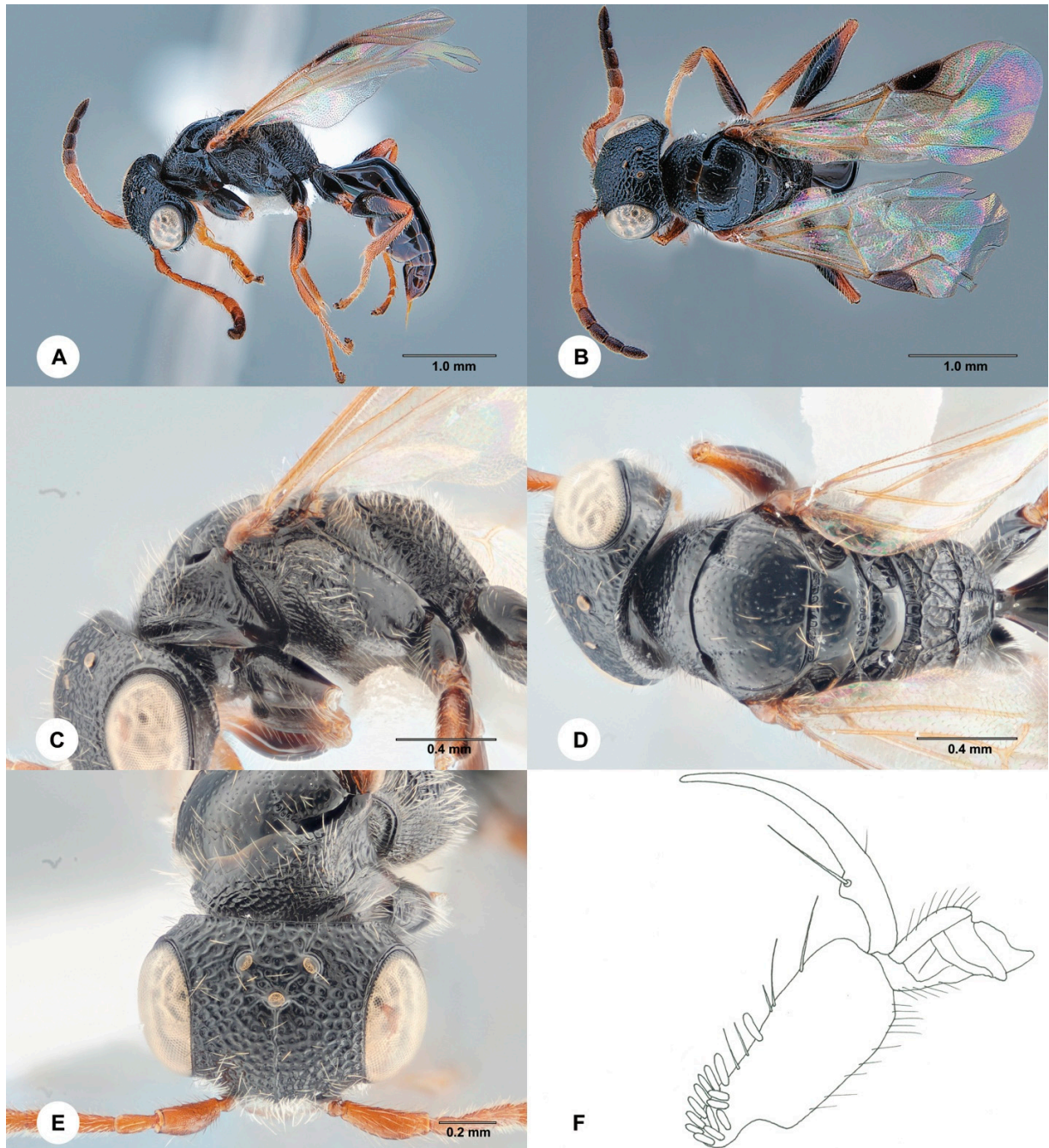


Figure S23. *Anteon pteromaculatum* Xu, Olmi, Guglielmino & Chen, 2012, female (SCAU 3040519) (A) Habitus, lateral view (B) Habitus, dorsal view (C) Head and mesosoma, lateral view (D) Head and mesosoma, dorsal view (E) Head, dorsal view (F) Chela.

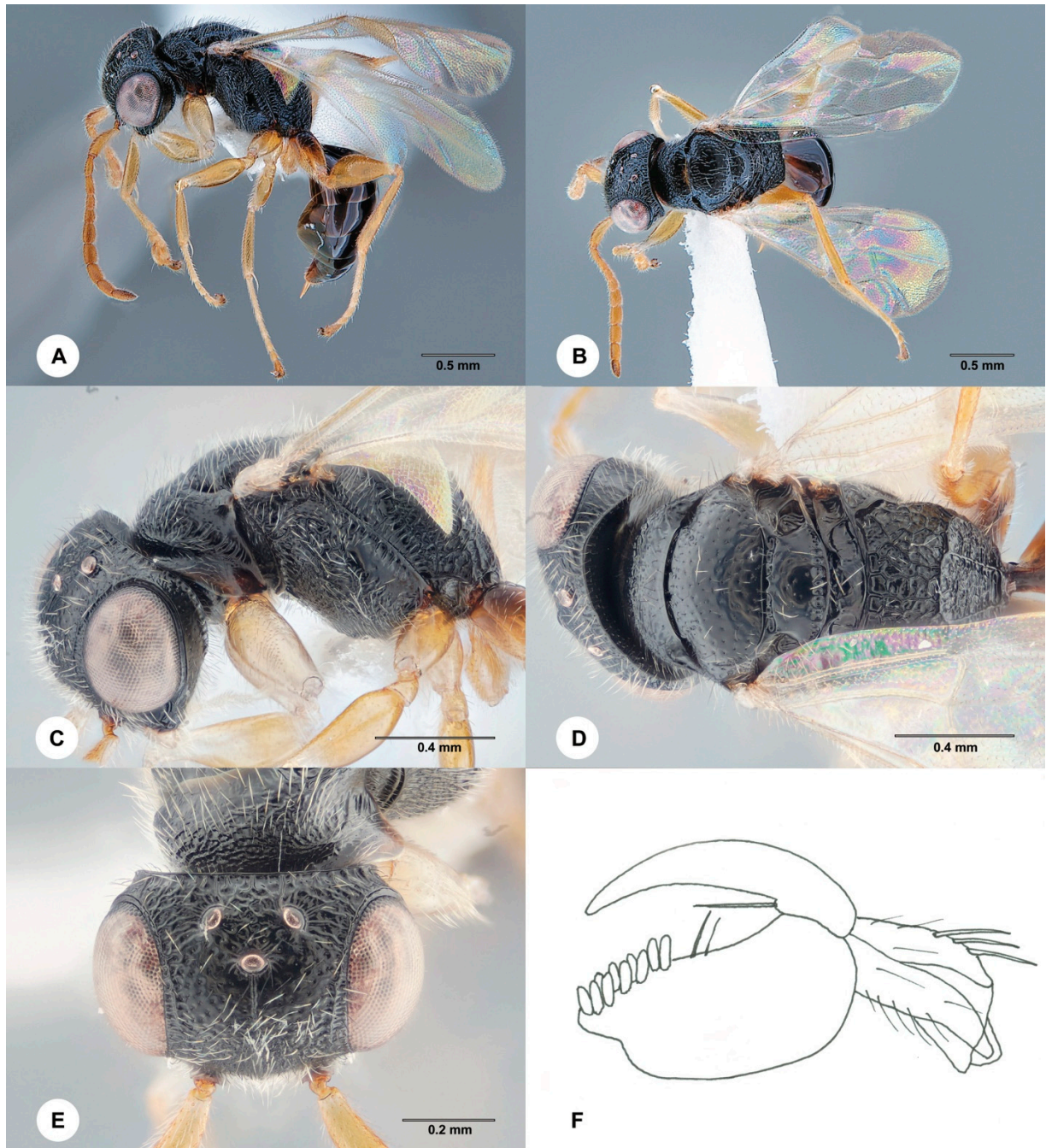


Figure S24. *Anteon tengchongense* Xu, He & Olmi, 1998, female (SCAU 3040523) (A) Habitus, lateral view (B) Habitus, dorsal view (C) Head and mesosoma, lateral view (D) Head and mesosoma, dorsal view (E) Head, dorsal view (F) Chela.

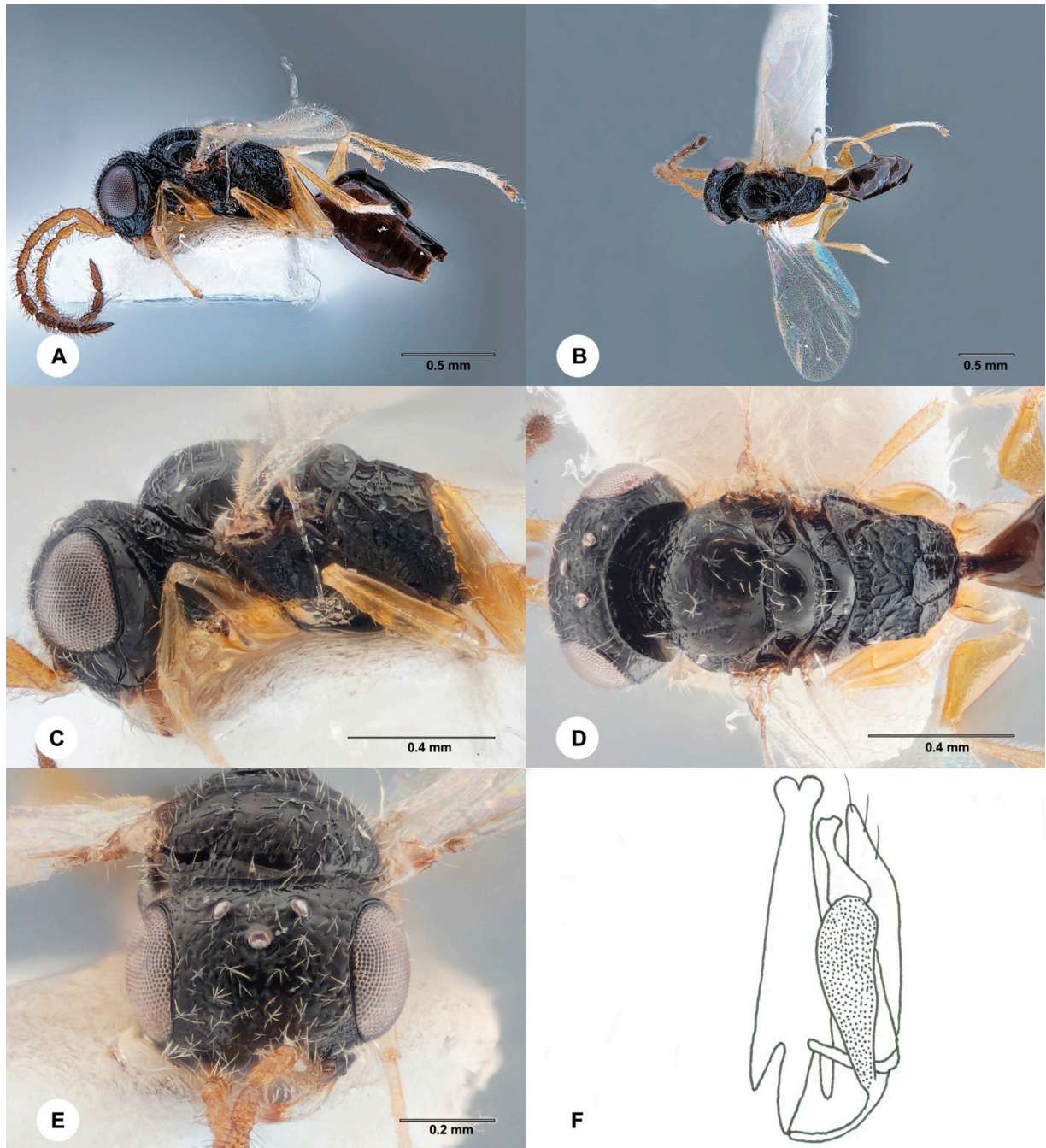


Figure S25. *Anteon yuani* Xu, He & Olmi 1998, male (SCAU 3011682) (A) Habitus, lateral view (B) Habitus, dorsal view (C) Head and mesosoma, lateral view (D) Head and mesosoma, dorsal view (E) Head, anterior view (F) Genitalia (left half removed).

Table S1. Details of sequenced specimens

Code	Figure No.	species	Sex	Collecting data
SCAU 3040430	Figure S1	<i>Anteon abdounouri</i> Olmi, 1987	female	CHINA: Shandong, Linyi, Lanling County, 34°51'N, 118°4'E, 5-15.viii.2014, MT, Xuejun Yang
SCAU 3011714	Figure S2	<i>Anteon achterbergi</i> Olmi, 1991	female	CHINA: Shandong, Linyi, Lanling County, 34°51'N 118°4'E, 14-24.vii.2014, MT, Xuejun Yang
SCAU 3011677	Figure S3	<i>Anteon blanduscutum</i> Xu, He & Rui, 1996	female	CHINA: Yunnan, Xishuangbanna, Menghai, Bulangshan Village, 21°44.981'N, 100°26.907'E, 1683 m, Area A2, grass, 15.viii.2018, Li Ma
SCAU 3011678	Figure 2	<i>Anteon blanduscutum</i> Xu, He & Rui, 1996	male	CHINA: Yunnan, Xishuangbanna, Menghai, Bulangshan Village, 21°44.981'N, 100°26.907'E, 1683 m, Area A2, grass, 15.viii.2018, Li Ma
SCAU 3011669	Figure S4	<i>Anteon borneanum</i> Olmi, 1984	female	CHINA: Yunnan, Xishuangbanna, Menghai, Bulangshan Village, 21°44.745'N, 100°26.07'E, 1621m, Area D, near road, 20.vi-20.vii.2018, MT, Li Ma
SCAU 3011671	Figure 3	<i>Anteon clarichypeum</i> sp. n.	female	CHINA: Yunnan, Xishuangbanna, Menghai, Bulangshan Village, 21°44.761'N, 100°25.959'E, 1595 m, Area D, forest, MT, 16.viii-14.ix.2018, Li Ma
SCAU 3011712	Figure 5	<i>Anteon claricolle</i> Kieffer, 1906	male	CHINA: Inner Mongolia, Wulan Aodu Experimental Station, 38°46'15"N, 108°46'41"E, 20-30.vi.2013, MT, Yongming Luo
SCAU 3040561		<i>Anteon claricolle</i> Kieffer, 1906	female	CHINA: Beijing, Yuanqing County, Zhangshanying Town, 40.50847°N, 115.78884°E, 807 m, 27.vi-4.vii.2012, MT, Jinyu Hu
SCAU 3040517	Figure S5	<i>Anteon confusum</i> Olmi, 1991	female	CHINA: Shaanxi, Yang County, Huayang Town, 33.382156°N, 107.507905°E, 1154m, 26.v-26.vi.2017, MT, Haoyu Liu
SCAU 3044058	Figure S6	<i>Anteon confusum</i> Olmi, 1991	male	CHINA: Yunnan, Xishuangbanna, Menghai, Bulangshan Village, 21°44.619'N, 100°26.721'E, 1692 m, Area C, forest, 28.v-28.vi.2019, MT, Li Ma
SCAU 3011621	Figure S7	<i>Anteon exiguum</i> (Haupt, 1941)	female	CHINA: Hebei, Xiaowutai National Nature Reserve, 39°52.048'N, 114°56.446'E, 1364 m, 13-20.viii.2012, MT, Haiming Zhang
SCAU 3040512	Figure S8	<i>Anteon fidum</i> Olmi, 1991	male	CHINA: Yunnan, Lanping Dist. Mt. Lasha, 26.324010°N, 99.275624°E, 2500 m, farm land, 20-30.vii.2018, MT, Jin-Ku Li
SCAU 3040522	Figure S9	<i>Anteon funiuense</i> Xu, He & Olmi, 2001	female	CHINA: Shaanxi, Yang County Yishui Town, 33.441897°N, 107.361713°E, 901 m, 24.v-24.vi.2017, MT, Haoyu Liu
SCAU 3044072	Figure S10	<i>Anteon henanense</i> Xu, He & Olmi, 2001	female	CHINA: Yunnan, Lanping Dist., Mt. Lasha, 26.324161°N, 99.256617°E, 2700 m, sample 564, 11-26.viii.2019, MT2, A. Reshchikov et al.
SCAU 3040511	Figure S11	<i>Anteon henanense</i> Xu, He & Olmi, 2001	male	CHINA: Yunnan, Lanping Dist. Mt. Lasha, 26.324010°N, 99.275624°E, 2500m, farm land, 20-30.vii.2018, MT, Jin-Ku Li
SCAU 3011713	Figure S12	<i>Anteon hilare</i> Olmi, 1984	female	CHINA: Shandong, Linyi, Lanling County, 34°51'N, 118°4'E, 14-24.vii.2014, MT, Xuejun Yang
SCAU 3011676	Figure S13	<i>Anteon hirashimai</i> Olmi, 1993	female	CHINA: Yunnan, Xishuangbanna, Menghai, Bulangshan Village, 21°44.619'N 100°26.721'E, 1692 m, Area C, forest, 21.vi-20.vii.2018, MT, Li Ma
SCAU 3011738	Figure 6	<i>Anteon maguanense</i> sp. n.	female	CHINA: Yunnan, Maguan Town, Muchang County, 22.91888°N, 104.162851°E, 1336 m, coniferous forest, vi.2017, MT, Li Ma
SCAU 3040514	Figure 7	<i>Anteon meifenganum</i> Olmi, 1991	female	CHINA: Shaanxi, Yang County Huayang Town, 33.382156°N, 107.507905°E, 1154 m, 26.v-26.vi.2017, MT, Haoyu Liu
SCAU 3040520	Figure 8	<i>Anteon meifenganum</i> Olmi, 1991	male	CHINA: Shaanxi, Yang County Huayang Town, 33.675537°N, 107.349632°E, 922 m, 12.iv-12.v.2017, MT, Haoyu Liu

SCAU 3040515	Figure S14	<i>Anteon mite</i> Olmi, 1996	male	CHINA: Shaanxi, Yang County Huayang Town, 33.382156°N, 107.507905°E, 1154 m, 26.v-26.vi.2017, MT, Haoyu Liu
SCAU 3011661	Figure S15	<i>Anteon multicolor</i> Xu, He & Olmi, 1998	female	CHINA: Yunnan, Xishuangbanna, Menghai, Bulangshan Village, 21°45.037'N, 100°26.715'E, 1683 m, Area A, grass, 17.v-21.vi.2018, MT, Li Ma
SCAU 3040571		<i>Anteon multicolor</i> Xu, He & Olmi, 1998	male	CHINA: Yunnan, Xishuangbanna, Menghai, Bulangshan Village, 21°44.521'N 100°26.647'E, 1646 m, Area C, grass, 17.v-21.vi.2018, MT, Li Ma
SCAU 3040573		<i>Anteon multicolor</i> Xu, He & Olmi, 1998	male	CHINA: Yunnan, Xishuangbanna, Menghai, Bulangshan Village, 21°44.521'N 100°26.647'E, 1646 m, Area C, grass, 17.v-21.vi.2018, MT, Li Ma
SCAU 3040574		<i>Anteon multicolor</i> Xu, He & Olmi, 1998	female	CHINA: Yunnan, Xishuangbanna, Menghai, Bulangshan Village, 21°44.521'N 100°26.647'E, 1646 m, Area C, grass, 17.v-21.vi.2018, MT, Li Ma
SCAU 3044011	Figure S16	<i>Anteon multicolor</i> Xu, He & Olmi, 1998	male	CHINA: Yunnan, Xishuangbanna, Menghai, Bulangshan Village, 21°44.521'N 100°26.647'E, 1646 m, Area C, grass, 28.vi-19.vii.2019, MT, Li Ma
SCAU 3044014		<i>Anteon multicolor</i> Xu, He & Olmi, 1998	female	CHINA: Yunnan, Xishuangbanna, Menghai, Bulangshan Village, 21°44.521'N 100°26.647'E, 1646 m, Area C, grass, 28.vi-19.vii.2019, MT, Li Ma
SCAU 3044065		<i>Anteon multicolor</i> Xu, He & Olmi, 1998	male	CHINA: Guangdong, Guangzhou, South China Botanical Garden, Pugang, 23°11'25.82"N, 113°21'47.01"E, 7.vii- 7.viii.2019, MT7, Shixiao Luo
SCAU 3044074		<i>Anteon multicolor</i> Xu, He & Olmi, 1998	female	CHINA: Yunnan, Lanping Dist., Mt. Lasha, 26.324161°N, 99.256617°E, 2700 m, sample 564 11-26.viii.2019, MT2, A. Reshchikov et al.
SCAU 3044114		<i>Anteon multicolor</i> Xu, He & Olmi, 1998	male	CHINA:Yunnan, Lanping Dist. Mt. Lasha, 26.324161°N, 99.256617°E, 2700m, boskage, 10-20.vii.2018, MT, Jin-Ku Li
SCAU 3048997		<i>Anteon multicolor</i> Xu, He & Olmi, 1998	male	CHINA: Yunnan, Mt. Gaoligong, 25°23'59.6"N, 98°42'26.6"E, 1951m, 1-15.vi.2020, MT, Yi Lang
SCAU 3040524	Figure S17	<i>Anteon munitum</i> Olmi, 1984	male	CHINA: Shaanxi, Yang County, Yishui Town, 33.441897°N, 107.361713°E, 901 m, MT, 24.v-24.vi.2017, MT, Haoyu Liu
SCAU 3040521	Figure S18	<i>Anteon nadyense</i> Olmi 1987	female	CHINA: Shaanxi, Yang County, Yishui Town, 33.441897°N, 107.361713°E, 901 m, MT, 24.v-24.vi.2017, MT, Haoyu Liu
SCAU 3040433	Figure S19	<i>Anteon nanlingense</i> Xu, Olmi & He, 2011	female	THAILAND: Mae Hong Son Prov., Pai, 19°22'4.4"N, 98°30'16"E, 745m, 1.ii-26.iii.2016, MT, A. Reshchikov
SCAU 3048821	Figure S20	<i>Anteon nanlingense</i> Xu, Olmi & He, 2011	male	CHINA: Guangdong, Shenzhen, Huaqiao Cheng, wet land, 22.533217°N, 113.968771°E, 31.iii-29.iv.2020, MT, Longlong Chen
SCAU 3011658	Figure 9	<i>Anteon parafidum</i> sp. n.	female	CHINA: Yunnan, Xishuangbanna, Menghai, Bulangshan Village, 21°45.037'N, 100°26.715'E, 1683 m, Area A, grass, 17.v-21.vi.2018, MT, Li Ma
SCAU 3011662	Figure 10	<i>Anteon parafidum</i> sp. n.	male	CHINA: Yunnan, Xishuangbanna, Menghai, Bulangshan Village, 21°45.037'N, 100°26.715'E, 1683 m, Area A, grass, 17.v-21.vi.2018, MT, Li Ma
SCAU 3040566		<i>Anteon parafidum</i> sp. n.	female	CHINA: Yunnan, Xishuangbanna, Menghai, Bulangshan Village, 21°44.981'N 100°26.907'E, 1683 m, Area A2, grass, 15.viii.2018, MT, Li Ma
SCAU 3040567		<i>Anteon parafidum</i> sp. n.	male	CHINA: Yunnan, Xishuangbanna, Menghai, Bulangshan Village, 21°44.981'N 100°26.907'E, 1683 m, Area A2, grass, 15.viii.2018, MT, Li Ma
SCAU 3044018		<i>Anteon parafidum</i> sp. n.	male	CHINA: Yunnan, Xishuangbanna, Menghai, Bulangshan Village, 21°45.037'N, 100°26.715'E, 1683 m, Area A1, grass, 21.viii- 20.ix.2019, MT, Li Ma

SCAU 3044026		<i>Anteon parafidum</i> sp. n.	female	CHINA: Yunnan, Xishuangbanna, Menghai, Bulangshan Village, 21°45.037'N, 100°26.715'E, 1683 m, Area A1, grass, 21.viii- 20.ix.2019, MT, Li Ma
SCAU 3044033		<i>Anteon parafidum</i> sp. n.	female	CHINA: Yunnan, Xishuangbanna, Menghai, Bulangshan Village, 21°44.981'N, 100°26.907'E, 1683 m, Area A2, grass, 20.iv- 28.v.2019, MT, Li Ma
SCAU 3044066		<i>Anteon parafidum</i> sp. n.	male	CHINA: Yunnan, Xishuangbanna, Menghai, Bulangshan Village, 21°45.037'N, 100°26.715'E, 1683 m, Area A1, grass, 28.v- 28.vi.2019, MT, Li Ma
SCAU 3044088		<i>Anteon parafidum</i> sp. n.	male	CHINA: Yunnan, Xishuangbanna, Menghai, Bulangshan Village, 21°45.037'N, 100°26.715'E, 1683 m, Area A1, grass, 20.vii- 21.viii.2019, MT, Li Ma
SCAU 3044089		<i>Anteon parafidum</i> sp. n.	female	CHINA: Yunnan, Xishuangbanna, Menghai, Bulangshan Village, 21°45.037'N, 100°26.715'E, 1683 m, Area A1, grass, 20.vii- 21.viii.2019, MT, Li Ma
SCAU 3040518	Figure S21	<i>Anteon pilosum</i> Xu, Olmi & He, 2010	male	CHINA: Shaanxi, Yang County, Huayang Town, 33.382156°N, 107.507905°E, 1154 m, 26.v-26.vi.2017, MT, Haoyu Liu
SCAU 3011631	Figure 11	<i>Anteon priscum</i> Olmi, 1991	female	CHINA: Jiangsu, Nanjing, Xianlin, Mt. Duoshan, 32°6'51"N, 118°54'43"E, 30.iv-7.v.2012, MT, Jie Zhao
SCAU 3011723	Figure S22	<i>Anteon priscum</i> Olmi, 1991	male	CHINA: Jiangsu, Nanjing, Xianlin, Mt. Duoshan, 32°6'51"N 118°54'43"E, 9-15.iv.2012, MT, Jie Zhao
SCAU 3040519	Figure S23	<i>Anteon pteromaculatum</i> Xu, Olmi, Guglielmino & Chen, 2012	female	CHINA: Shaanxi, Yang County, Huayang Town, 33.675537°N, 107.349632°E, 922 m, 12.iv-12.v.2017, MT, Haoyu Liu
SCAU 3040516	Figure 12	<i>Anteon shaanxianum</i> sp. n.	male	CHINA: Shaanxi, Yang County, Huayang Town, 33.382156°N, 107.507905°E, 1154 m, 26.v-26.vi.2017, MT, Haoyu Liu
SCAU 3011688	Figure 13	<i>Anteon shandonganum</i> sp. n.	female	CHINA: Shandong, Shanghe County, 37°16'4"N, 117°9'10"E, 23-29.vi.2018, MT3, Jiahe Yan
SCAU 3040523	Figure S24	<i>Anteon tengchongense</i> Xu, He & Olmi, 1998	female	CHINA: Shaanxi, Yang County, Yishui Town, 33.441897°N 107.361713°E, 901 m, 24.v-24.vi.2017, MT, Haoyu Liu
SCAU 3011682	Figure S25	<i>Anteon yuani</i> Xu, He & Olmi, 1998	male	CHINA: Guangdong, Guangzhou, University Town, 23°2'55"N 113°23'12"E, forest, 16-26.x.2018, MT, Huayan Chen

Table S2. Genetic distance of *COI* within *Anteon* species under K2P model

Species	Distance(%)
<i>Anteon abdunnouri</i>	NA
<i>Anteon achterbergi</i>	NA
<i>Anteon blanduscutum</i>	1.6
<i>Anteon borneanum</i>	NA
<i>Anteon clariclypeum</i>	NA
<i>Anteon claricolle</i>	0.8–1.8
<i>Anteon collare</i>	NA
<i>Anteon confusum</i>	2
<i>Anteon ephippiger</i>	NA
<i>Anteon exiguum</i>	1.4
<i>Anteon fulviventre</i>	NA
<i>Anteon fidum</i>	NA
<i>Anteon funiuense</i>	NA
<i>Anteon gaullei</i>	NA
<i>Anteon henanense</i>	0
<i>Anteon hilare</i>	NA
<i>Anteon hirashimai</i>	NA
<i>Anteon maguanense</i>	NA
<i>Anteon meifenganum</i>	0
<i>Anteon mite</i>	NA
<i>Anteon multicolor</i>	0.8–0.5
<i>Anteon munitum</i>	NA
<i>Anteon naduense</i>	NA
<i>Anteon nanlingense</i>	3
<i>Anteon parafidum</i>	0.8–0.3
<i>Anteon pilosum</i>	NA

<i>Anteon priscum</i>	0.6
<i>Anteon pteromaculatum</i>	NA
<i>Anteon shaanxianum</i>	NA
<i>Anteon shandonganum</i>	NA
<i>Anteon tengchongense</i>	NA
<i>Anteon yuani</i>	NA

		1	2	3	4	5	6	7	8	9	10	11	12	13	14	15	16	17	18	19	20	21	22	23	24	25	26	27	28	29	30	31	32	
1	<i>Anteon abdounouri</i>		5.7	19.4–19.9	15.5	20	15.5–16.1	16.1	18–18.8	16.9	15.7–15.8	18.5	16.8	16.2	18.5	18.8–18.9	15.7	16.5	20.7	16.6–16.7	15.8	17–17.5	17.6	17.8	15.7–16.5	15.8–16.4	19.6	16.1–16.8	18.2	17.1	14	15.5	15	
2	<i>Anteon achterbergi</i>			16.1–16.5	15.2	16.5	3.1–4.6	9.1	12.1–12.6	9.4	11–11.3	10.8	12.7	13.8	12.3	17.1–17.2	17.7	15.2	17.9	14.5–14.6	15.2	9.6–10.1	13.3	13.3	14.1–14.3	11.4–12.1	17.7	11–11.9	15.3	10.4	8.8	4.6	12.1	
3	<i>Anteon blandiscutum</i>				17.8–18	19.4–19.8	17.2–18.1	16.7–17	16.7–17.6	17–17.2	17.3–18.1	17–17.5	17.8–18.1	13.1–13.2	18.3–18.8	19.2–20.2	20.7–21.1	17.9–18.5	17.6–17.7	18.9–19.3	17.6–18	16.4–17.8	17.8–18.2	19.3–19.8	19–19.6	16.8–17.7	19.6–19.8	15.2–16.4	19.8–19.9	15.8–16.3	16.5–16.7	17.6–17.8	14.9–15.3	
4	<i>Anteon borneanum</i>					17.1	16.4–17	14.9	14.6–14.8	15.7	15.9–16.1	16.8	14.7	15.7	17.7	16.4–16.8	16.4	14.7	19.9	14.5–14.6	15.5	16.5–16.9	15.7	18.6	16.1–16.4	14.6–15.4	15.8	15.7–16.4	15.2	15.2	16.3	15.1	13.7	
5	<i>Anteon clariclypeum</i>						16.8–17.7	15.2	16.9–17.6	17.2	17.3–18	17.5	16.3	15.5	18.1	19.4–19.6	19.3	18.9	18.5	16.7–16.8	17.9	17–17.2	15.4	17.3	17.1–17.3	15.9–16.7	18.9	17.3–18	19.1	16.9	16.4	16.4	15.3	
6	<i>Anteon claricolle</i>							10.3–10.4	13.7–14.7	9.8–10	11.2–11.7	12.3–12.5	13.2–13.4	13.9–14.5	12.5–12.9	16.9–17.2	17.7–18.1	16.7	19.1–19.3	15.5–16.1	16–16.3	10.2–11.4	14.5–15.1	13.6–15	14.6–15.5	11.6–12.5	18.3–18.4	11.9–13.1	16–17	11.3–11.5	10.2–10.5	15.4–15.8	12.6–13.1	
7	<i>Anteon collare</i>								13.5–14.1	4.1	11.1	8.7	11	12.3	9.1	17.8–18.1	17.4	15.4	18.3	15.2	13.9	10–10.2	13.4	13.4	13.4–13.7	11.1–11.6	16.4	10.4–11.1	15.6	10.2	8.7	4.3	10.8	
8	<i>Anteon confusum</i>											14.5–15.1	15.1–15.7	14.6–14.7	15.3	13.1–13.7	5.6–6.3	18.3–18.9	16.3–16.8	15.7–15.8	17.7–18.6	16.6–17	16.2	13.3–14.6	13.5–14.3	17.1–17.4	12.4–13.1	14.8–15.1	17.9–18.1	12.8–13.9	14.6–14.1	13.2–14.8	14.7–14.5	14.3
9	<i>Anteon ephippiger</i>										11.1–11.4	8.5	11.6	13.1	9.9	18.1–18.4	18.3	16.4	19	16.4	15.2	10.7–15.2	15.2	14.3	14.2–14.3	11.6–12.4	16.9	10.9–11.8	15.4	11	9.7	15.2	11.7	
10	<i>Anteon exiguum</i>											13.2	7.5	14.3–14.5	14.2–14.5	19.4–20.1	16.8–16.9	16.6–16.7	18–18.4	15.5–15.8	15.1	11.7–12.6	15.4	14.5–14.8	12.6–13.7	7.1–7.7	17.3–17.7	11.8–12.6	16.8	12.9–13.2	11.1–11.4	14.9–15.8	11.9–12.2	
11	<i>Anteon fulviventre</i>												14.3	14.2	12.3	18.6–18.7	18.9	17.2	18.4	15.7	17.2	10.5–10.7	14.3	14.7	16.9–17.2	14.2–14.6	17.5	13.4–14.2	16.2	11.6	11.1	14.2	12.9	
12	<i>Anteon fidum</i>													12.9	15	18.4–18.9	15.9																	

