

Figure S1. The growth of eighteen lilies during aphid inoculation. (A) 'Black Beauty'; (B) 'Conca D'or'; (C) 'Palazzo'; (D) 'Nymph'; (E) 'Friso'; (F) 'Eyeliner'; (G) 'Armandale'; (H) 'Heartstrings'; (I) 'Apricot Fudge'; (J) 'Trendy Havana'; (K) 'Secret Kiss'; (L) 'Cameleon'; (M) 'The Edge'; (N) 'White Triumph'; (O) 'Magnefique'; (P) 'Watch Up'; (Q) *Lilium leucanthum*; (R) *Lilium lancifolium*.

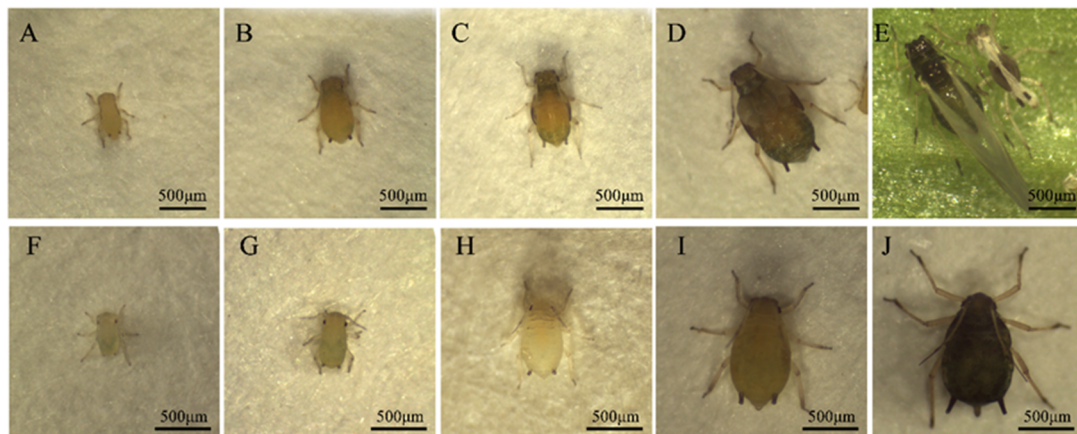


Figure S2. Comparison of body form of various ages and wing morphs of *Aphis gossypii*. (A) 1st instar alate nymph; (B) 2nd instar alate nymph; (C) 3rd instar alate nymph; (D) 4th instar alate nymph; (E) Alate adult; (F) 1st instar apterous nymph; (G) 2nd instar apterous nymph; (H) 3rd instar alate apterous nymph; (I) 4th instar apterous nymph; (J) Apterous adult.

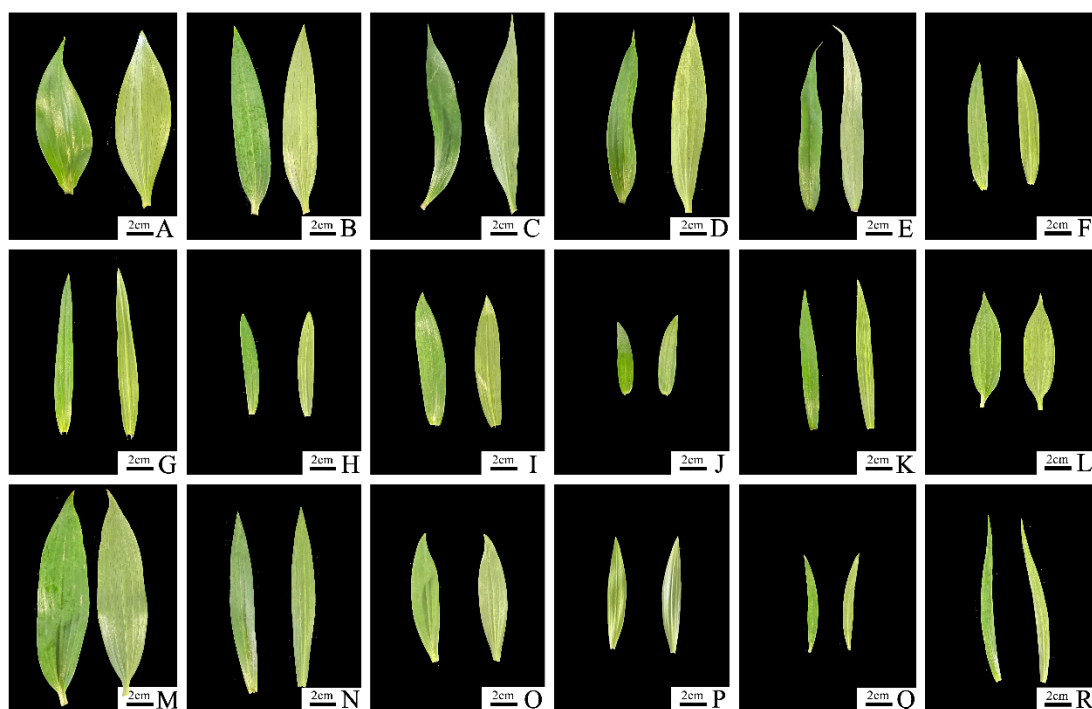


Figure S3. Leaf adaxial surface and abaxial surface of eighteen lilies. (A) 'Black Beauty'; (B) 'Conca D'or'; (C) 'Palazzo'; (D) 'Nymph'; (E) 'Friso'; (F) 'Eyeliner'; (G) 'Armandale'; (H) 'Heartstrings'; (I) 'Apricot Fudge'; (J) 'Trendy Havana'; (K) 'Secret Kiss'; (L) 'Cameleon'; (M) 'The Edge'; (N) 'White Triumph'; (O) 'Magnefique'; (P) 'Watch Up'; (Q) *Lilium leucanthum*; (R) *Lilium lancifolium*.

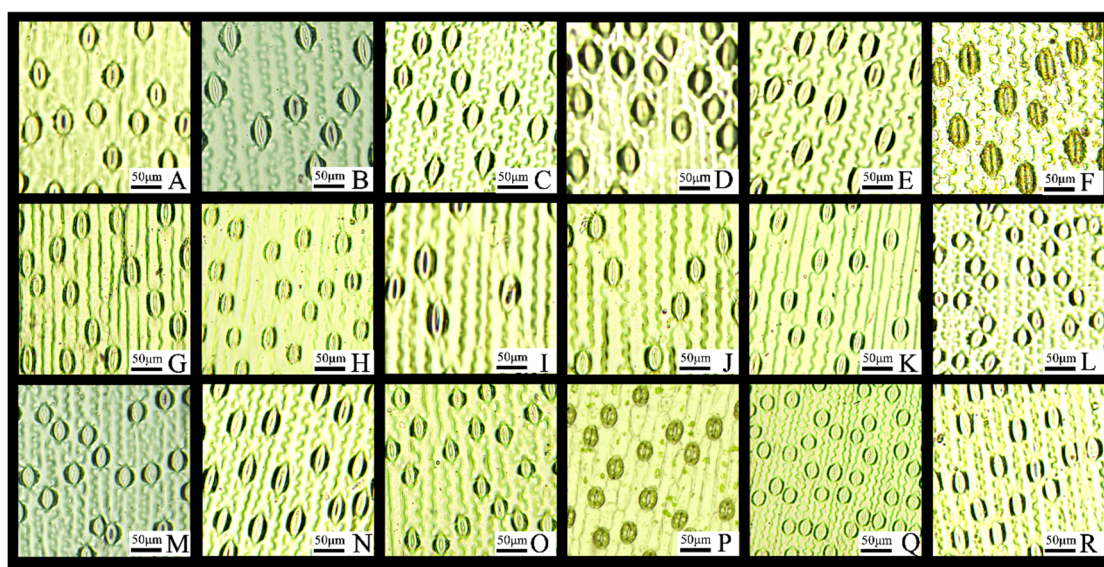


Figure S4. Leaf abaxial surface stomata of eighteen lilies. (A) 'Black Beauty'; (B) 'Conca D'or'; (C) 'Palazzo'; (D) 'Nymph'; (E) 'Friso'; (F) 'Eyeliner'; (G) 'Armandale'; (H) 'Heartstrings'; (I) 'Apricot Fudge'; (J) 'Trendy Havana'; (K) 'Secret Kiss'; (L) 'Cameleon'; (M) 'The Edge'; (N) 'White Triumph'; (O) 'Magnefique'; (P) 'Watch Up'; (Q) *Lilium leucanthum*; (R) *Lilium lancifolium*.

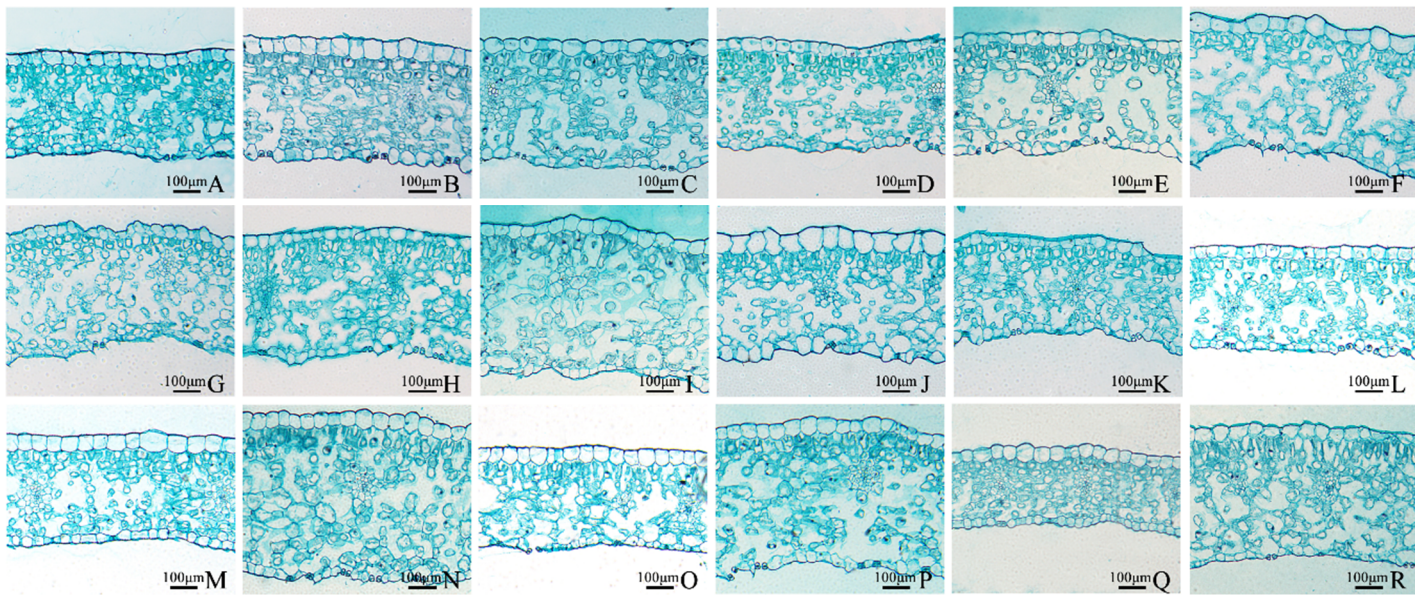


Figure S5. Leaf transverse sections of eighteen lilies, showing the epidermal tissues, and the palisade and spongy tissues. (A) 'Black Beauty'; (B) 'Conca D'or'; (C) 'Palazzo'; (D) 'Nymph'; (E) 'Friso'; (F) 'Eyeliner'; (G) 'Armandale'; (H) 'Heartstrings'; (I) 'Apricot Fudge'; (J) 'Trendy Havana'; (K) 'Secret Kiss'; (L) 'Cameleon'; (M) 'The Edge'; (N) 'White Triumph'; (O) 'Magnefique'; (P) 'Watch Up'; (Q) *Lilium leucanthum*; (R) *Lilium lancifolium*.