

Figure S1. Diagram of the pitfall trap used to attract field strains of *T. stercorea*.

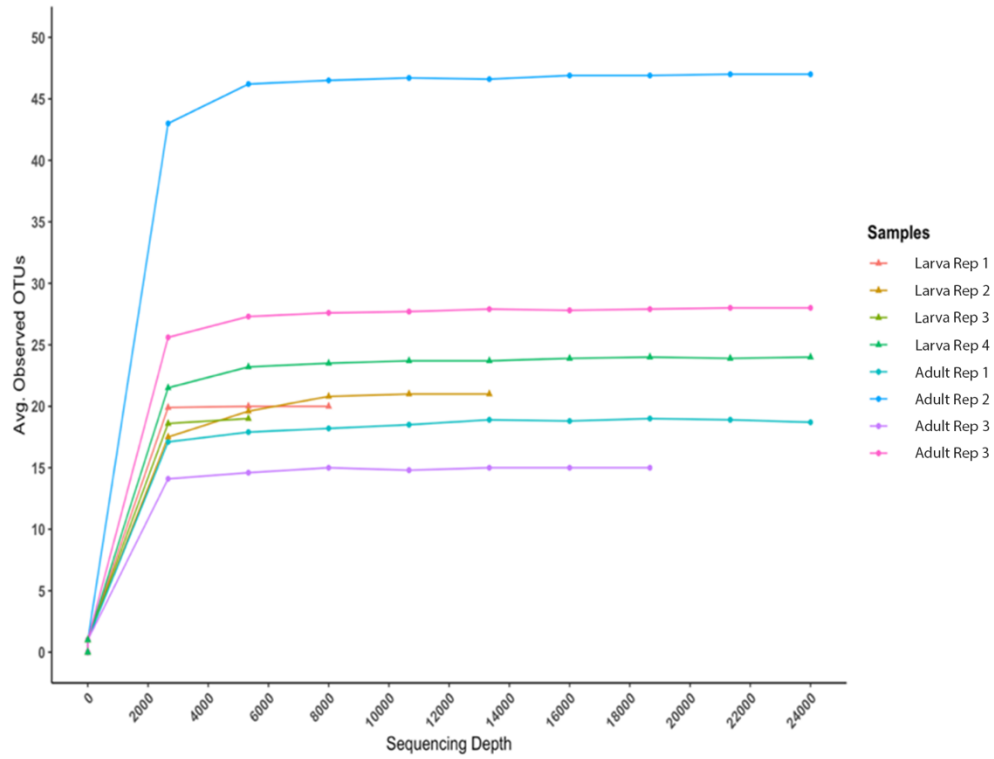


Figure S2. Alpha-rarefaction curve of the averaged observed OTUs detected in the *T. stercorea*'s alimentary canal. The sequence data were rarefied to a sequence depth of 7848 sequence count, and results are plotted as an alpha-rarefaction curve using a max depth of 24,000. Each line represents individual samples of either laboratory-reared larvae or adults. Filled triangles (▲) denote larvae and filled circles (●) denote adults.

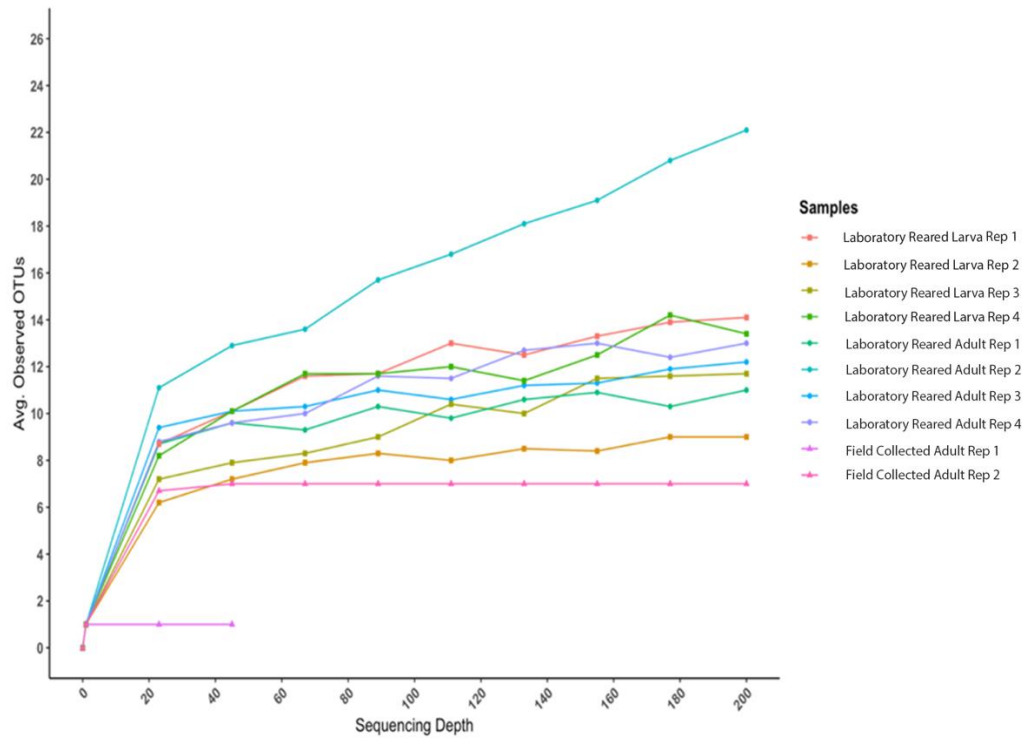


Figure S3. Alpha-rarefaction curve of the averaged observed OTUs detected in *T. stercora*'s alimentary canal. The sequence data were rarefied to a sequence depth of 66 sequence count, and results are plotted as an alpha-rarefaction curve using a max depth of 200. Each line represents individual samples of either laboratory-reared larvae, laboratory-reared adults or field-collected adults. Filled squares (■) denote laboratory-reared larvae, filled circles (●) denote laboratory-reared adults, and filled triangles (▲) denote field-collected adults.