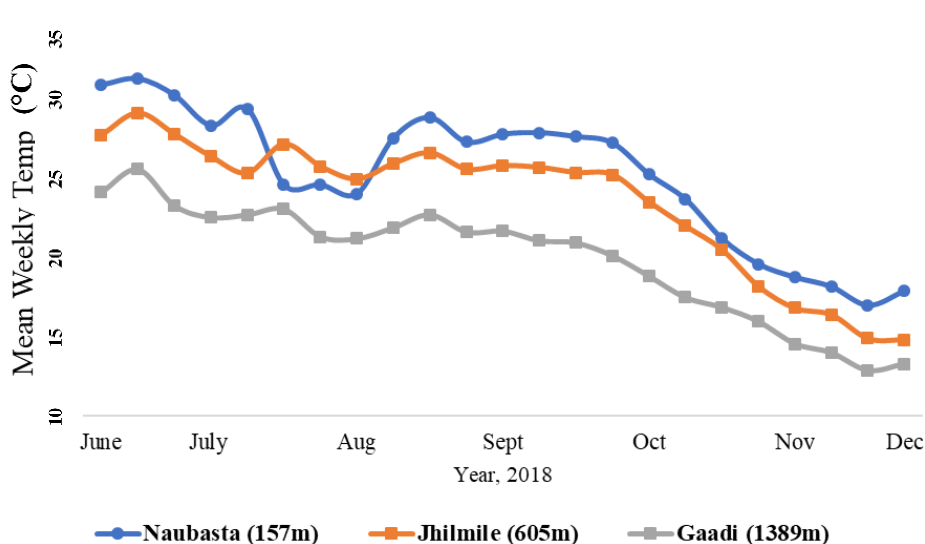


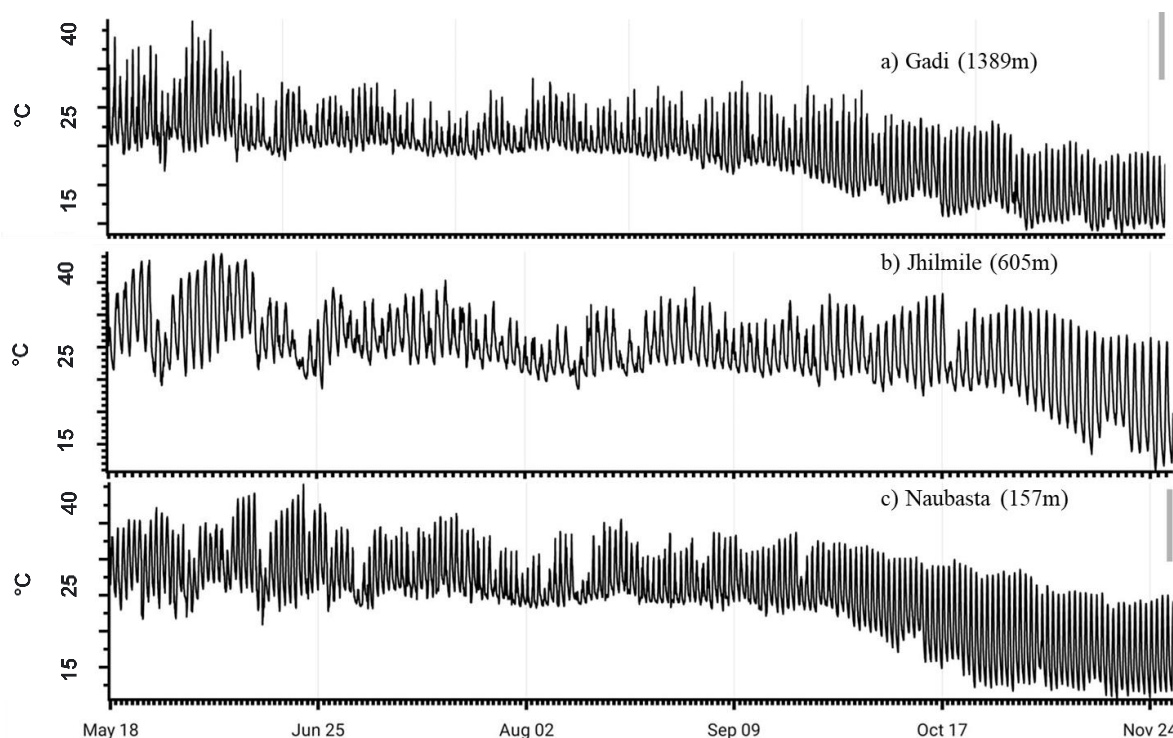
Supplementary Materials

# Insect Herbivore Populations and Plant Damage Increase at Higher Elevations

Sulav Paudel, Pragya Kandel, Dependra Bhatta, Vinod Pandit, Gary W. Felton and Edwin G. Rajotte



**Figure S1.** Average air temperatures from June to Dec 2018 in three different elevations, Naubasta (157 m), Jhilmile (605 m) and Gadi (1389 m).



**Figure S2.** Variation in air temperatures from May to Nov 2018 in three different elevations, Gadi (1389 m), Jhilmile (605 m) and Naubasta (157 m) as recorded by the temperature logger.