

Supplementary Information

Effect of temperature on the adhesion and sterilization effect of Ag⁺- doped BiVO₄ ceramic tiles

Ying Zhang¹, Xuhuan Zhao¹, Hao Wang³, Shiqi Fu¹, Xiulong Lv¹, Qian He¹, Rui Liu²,
Fangying Ji^{1, *}, Xuan Xu^{1, **}

1. Key Laboratory of Three Gorges Reservoir Region's Eco-Environment, Ministry of Education, Chongqing University, Chongqing, 400045, China
2. Yunnan Ribo Testing Technology Co., Ltd. Yunnan, 650101, China
3. Piesat Information Technology Co.,Ltd. Beijing, 100195, China

* Corresponding author. E-mail: jfy@cqu.edu.cn (Fangying Ji)

** Corresponding author. E-mail: xuxuan@cqu.edu.cn (Xuan Xu)

Table of Contents

Figure S1 The effect of Ag dosage on the sterilization effect of Ag/BiVO₄ obtained at 450 °C (bacterial suspension concentration: 1×10^6 CFU/mL; bacterial species: *Escherichia coli*; common anions: 0.9% Cl⁻).

Figure S2. Standard curve of bacteria suspension concentration vs. absorbance (wavelength: 600 nm)

Figure S3. XPS spectra of BiVO₄ and Ag/BiVO₄ powder (prepared temperature: 450 °C): (a) Full-scan spectra of BiVO₄ and Ag/BiVO₄; (b-e) peak positions of Ag, O, V, and Bi species.

Figure S4. (a) UV-Vis spectra of samples prepared at 450 °C; (b) band gap widths of the samples prepared at 450 °C.

Figure S5 *Escherichia coli* sterilization efficiency of Ag/BiVO₄ ceramic tiles after scratch tests (bacterial suspension concentration: 1×10^6 CFU/mL; common anions: 0.9% Cl⁻).

Figure S6. SEM cross-section image of Ag/BiVO₄ coating obtained at 650 °C

Figure S7. AFM images of (a-b) BiVO₄ and (c-d) Ag/BiVO₄-functionalized ceramic tiles annealed at 450 °C.

Figure S8. AFM images of (a-b) BiVO₄ and (c-d) Ag/BiVO₄-functionalized ceramic tiles annealed at 550 °C.

Figure S9. AFM images of (a-b) BiVO₄ and (c-d) Ag/BiVO₄-functionalized ceramic tiles annealed at 650 °C.

Figure S10 (a-c) SEM images of BiVO₄ and (d-f) Ag/BiVO₄ powders at 450 °C

Figure S11. Grain size distribution of BiVO₄ and (a) Ag/BiVO₄ (b) powder obtained at 450 °C

Figure S12 Concentration of Ag⁺ released from of Ag/BiVO₄-functionalized ceramic tiles annealed at 650 °C.

Table S1 The basic characteristics of glazed ceramic tiles (model number: 630ELN52005-A)

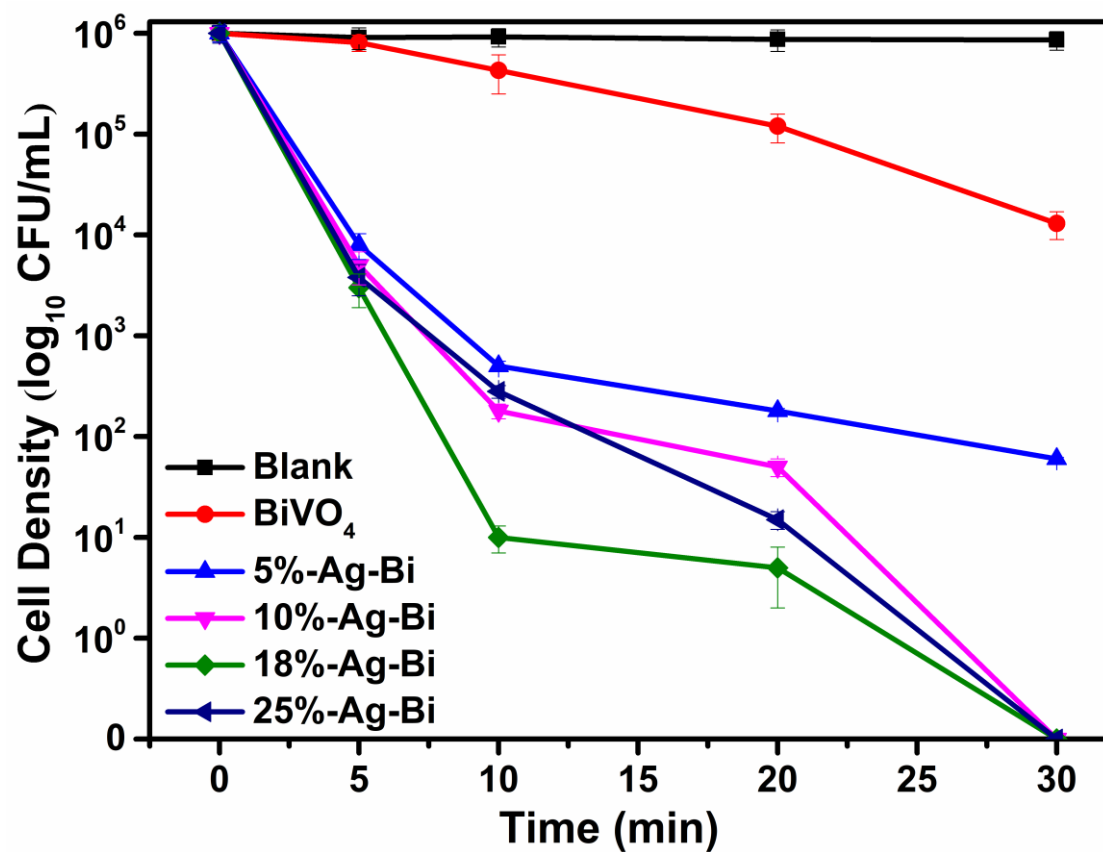


Figure S1. The effect of Ag dosage on the sterilization effect of Ag/BiVO₄ obtained at 450 °C (bacterial suspension concentration: 1×10^6 CFU/mL; bacterial species: *Escherichia coli*; common anions: 0.9% Cl⁻).

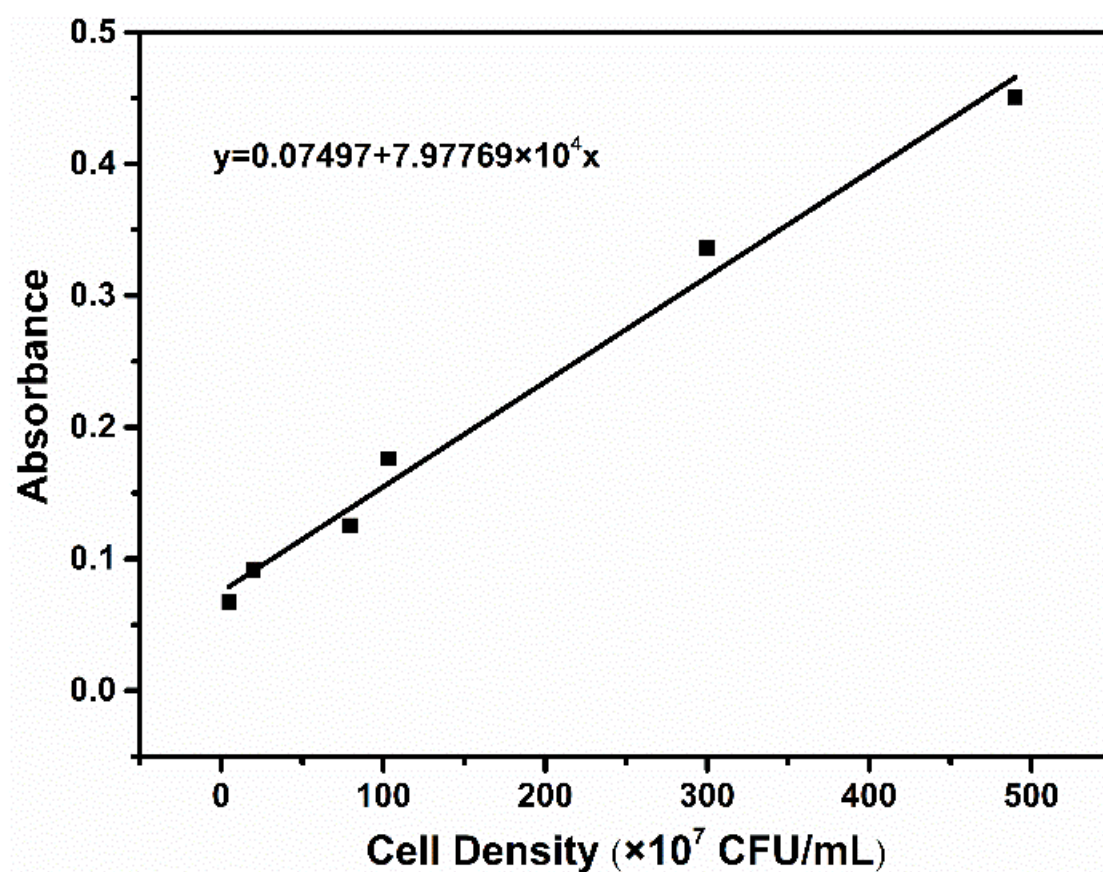


Figure S2. Standard curve of bacteria suspension concentration vs. absorbance

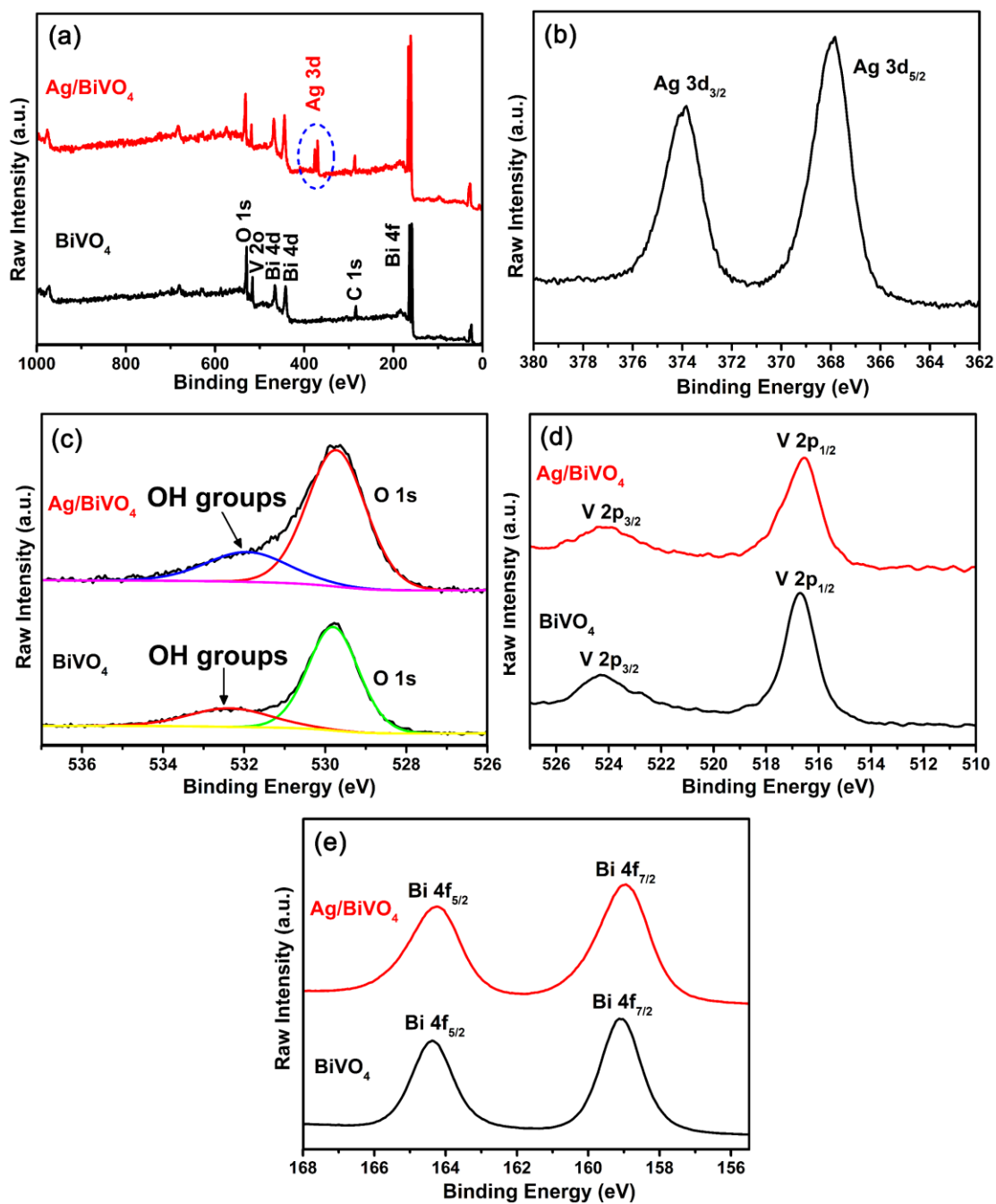


Figure S3. XPS spectra of BiVO_4 and Ag/BiVO_4 powder (prepared temperature: 450 °C). (a) Full-scan spectra of BiVO_4 and Ag/BiVO_4 ; (b-e) peak positions of Ag, O, V, and Bi species.

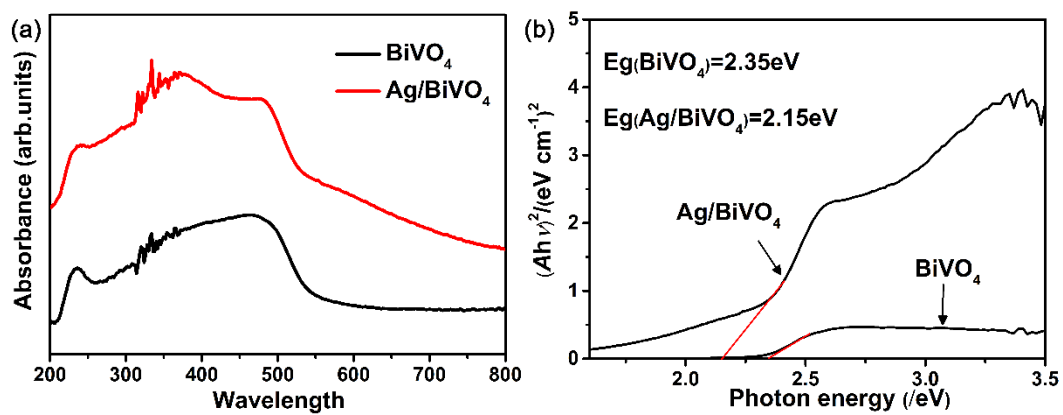


Figure S4. (a) UV-Vis spectra of the samples (prepared temperature: 450 °C); (b) Band gap widths of the samples (prepared temperature: 450 °C).

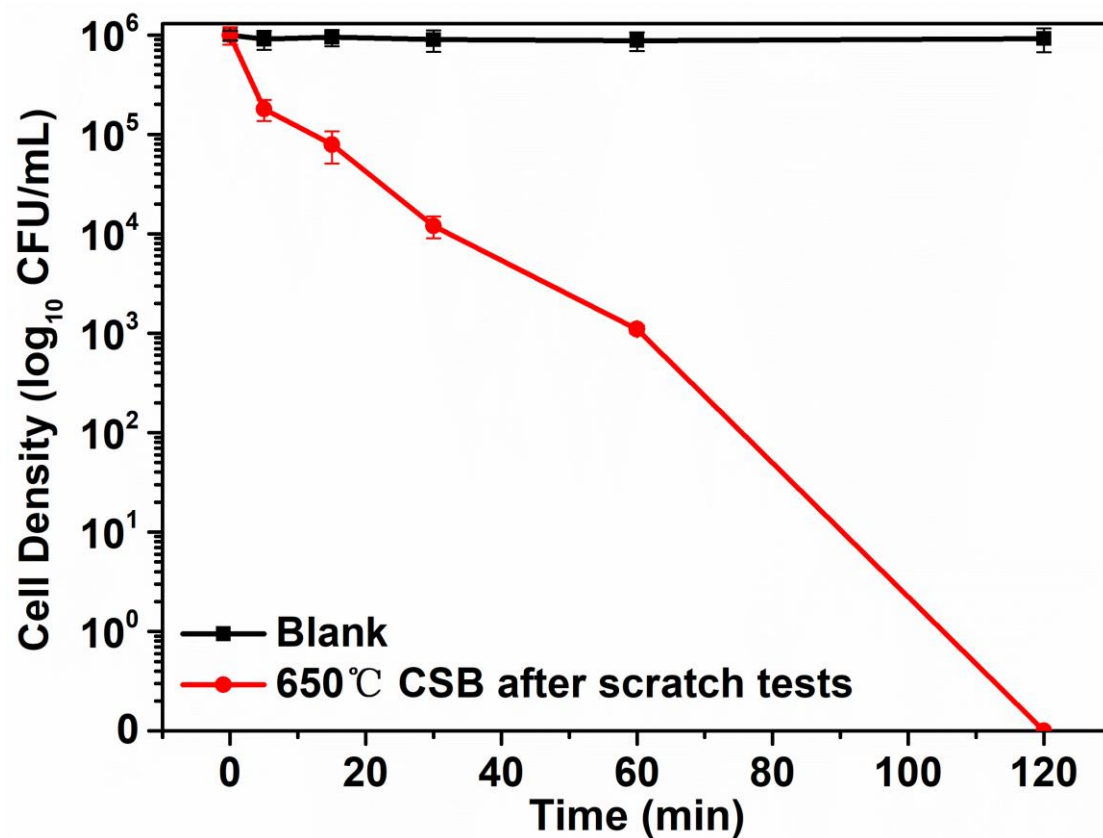


Figure S5 *Escherichia coli* sterilization efficiency of Ag/BiVO₄ ceramic tiles after scratch tests (bacterial suspension concentration: 1×10^6 CFU/mL; common anions: 0.9% Cl⁻).

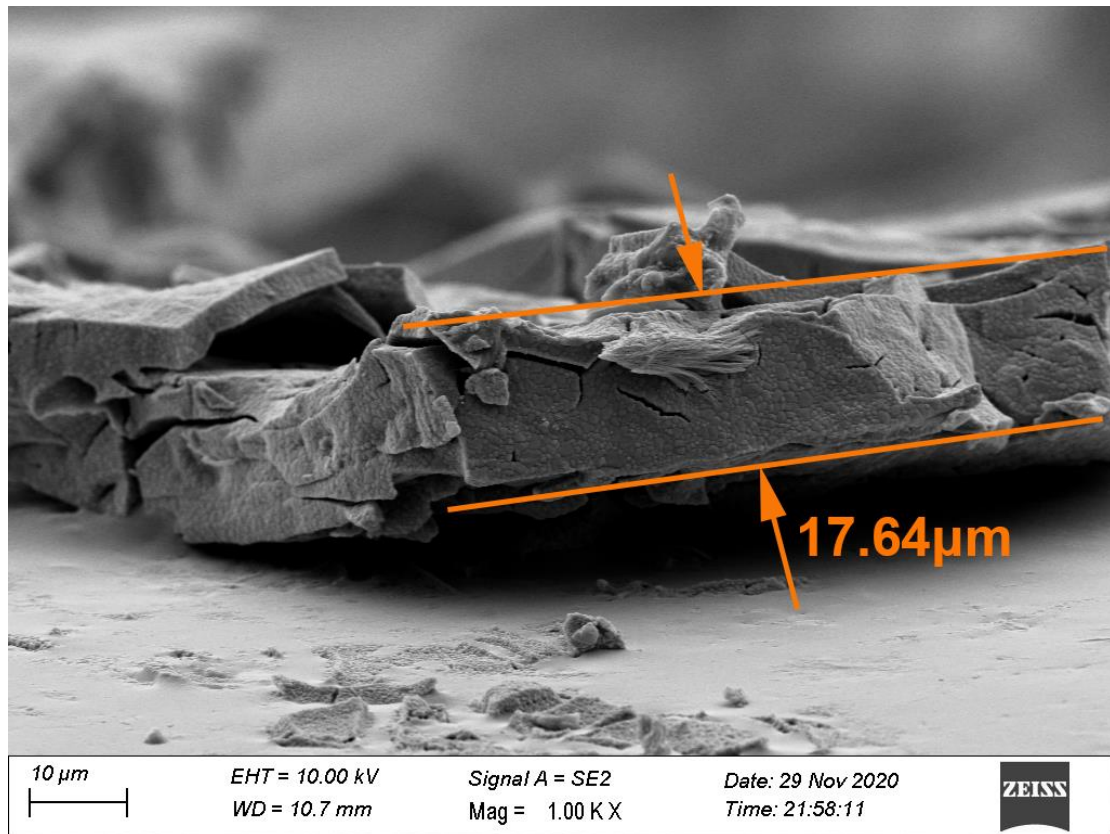


Figure S6. SEM cross section image of Ag/BiVO₄ coating obtained at 650 °C.

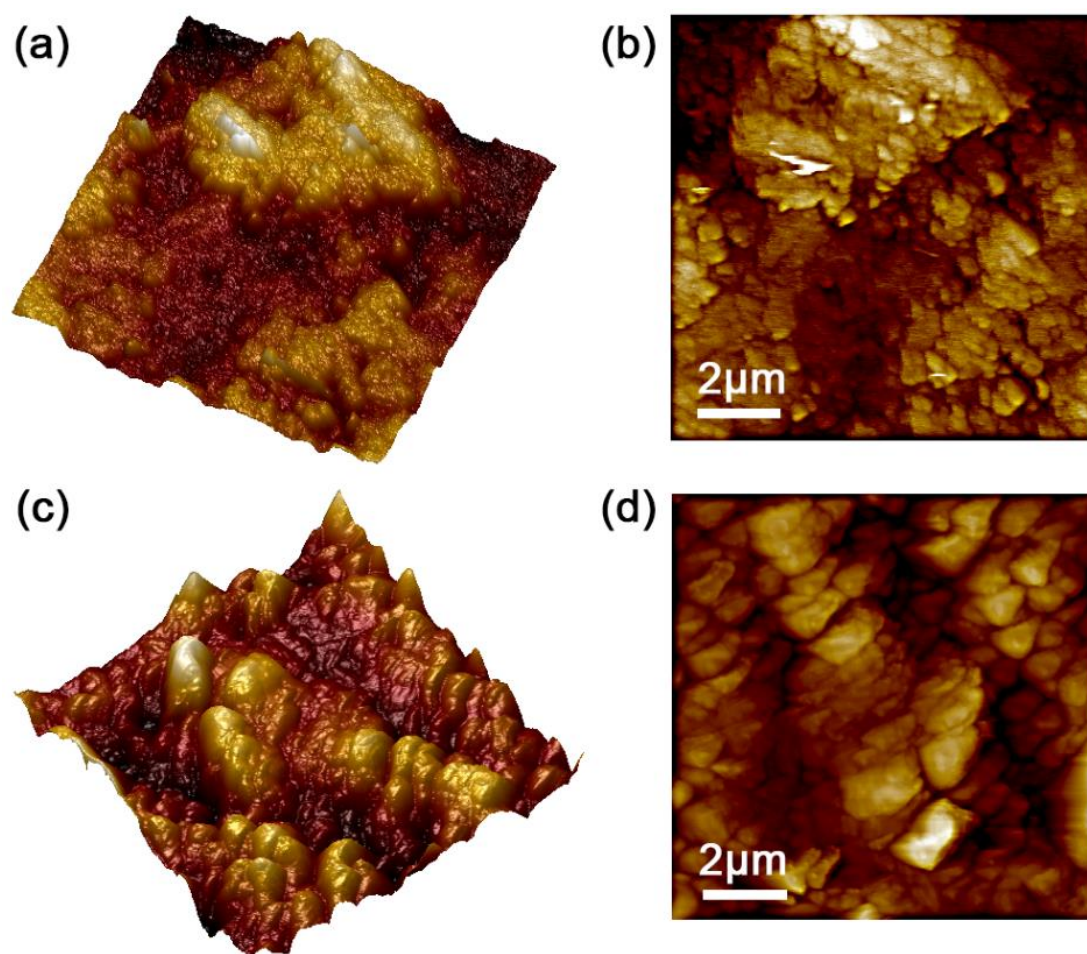


Figure S7. AFM images of (a-b) BiVO_4 and (c-d) Ag/BiVO_4 functionalized ceramic tiles annealed at $450\text{ }^\circ\text{C}$.

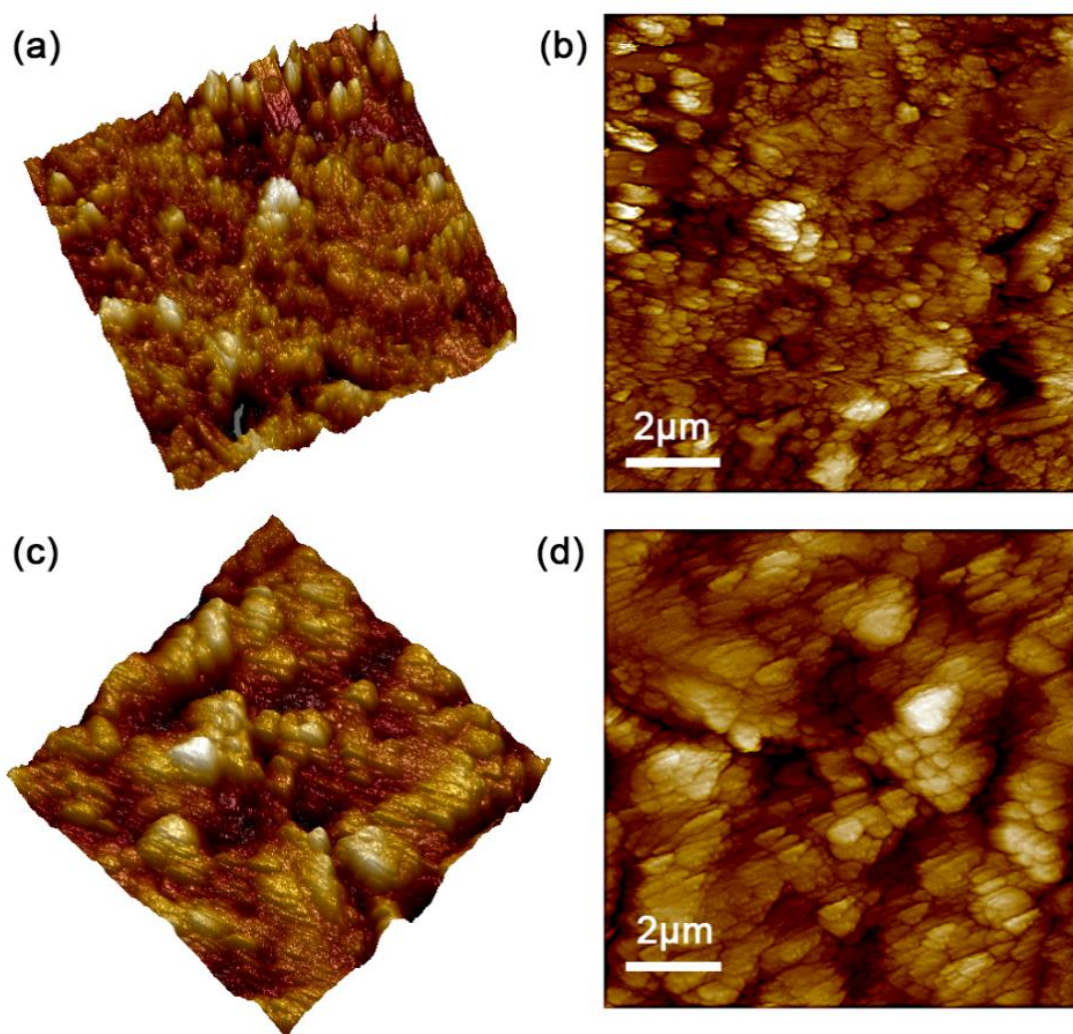


Figure S8. AFM images of (a-b) BiVO_4 and (c-d) Ag/BiVO_4 functionalized ceramic tiles annealed at 550 °C.

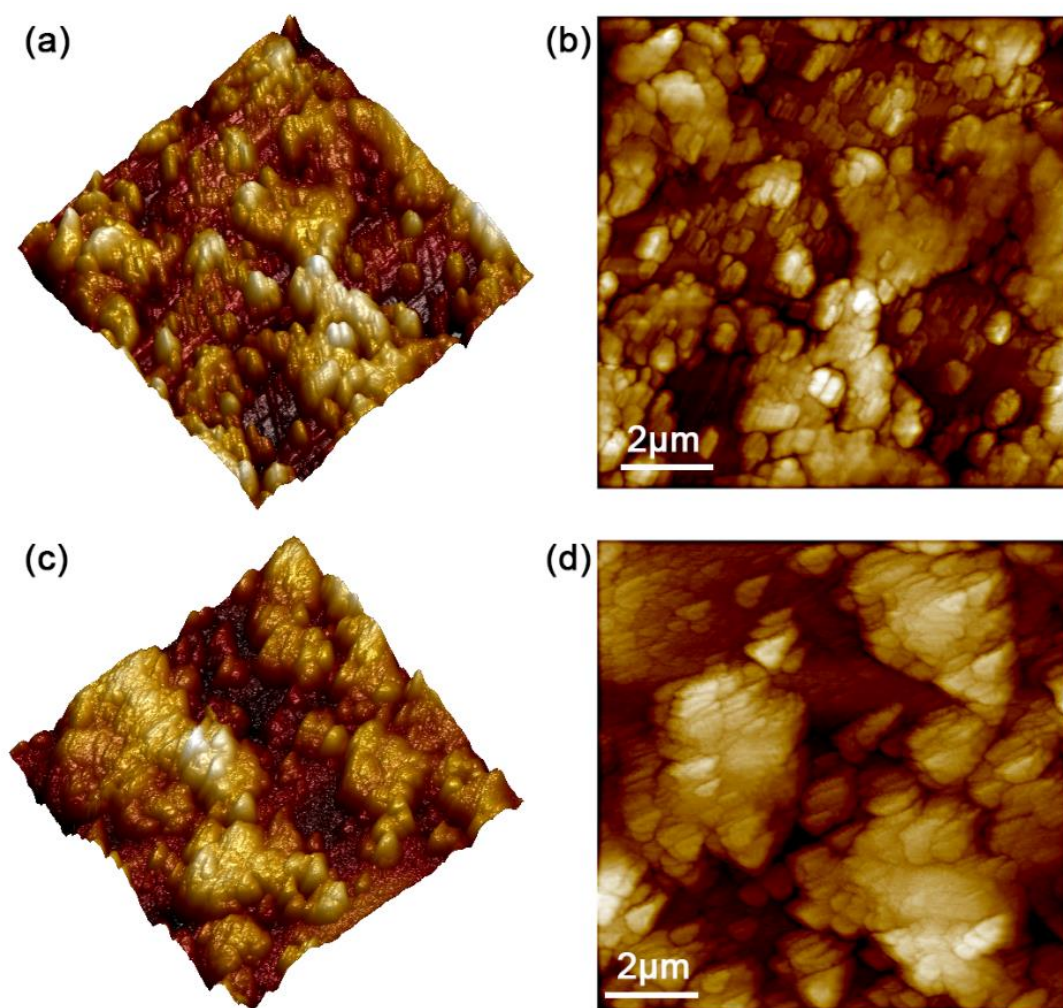


Figure S9. AFM images of (a-b) BiVO_4 and (c-d) AFM images of Ag/ BiVO_4 functionalized ceramic tiles annealed at 650 °C.

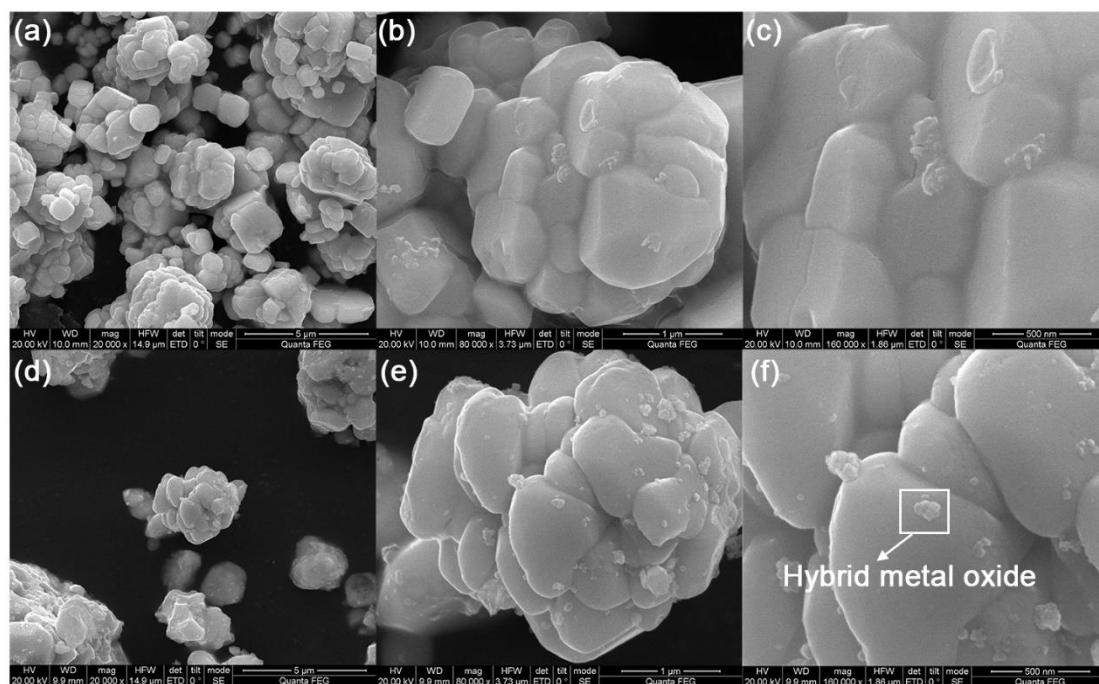


Figure S10. (a-c) SEM images of BiVO₄ and (d-f) Ag/BiVO₄ powders at 450°C

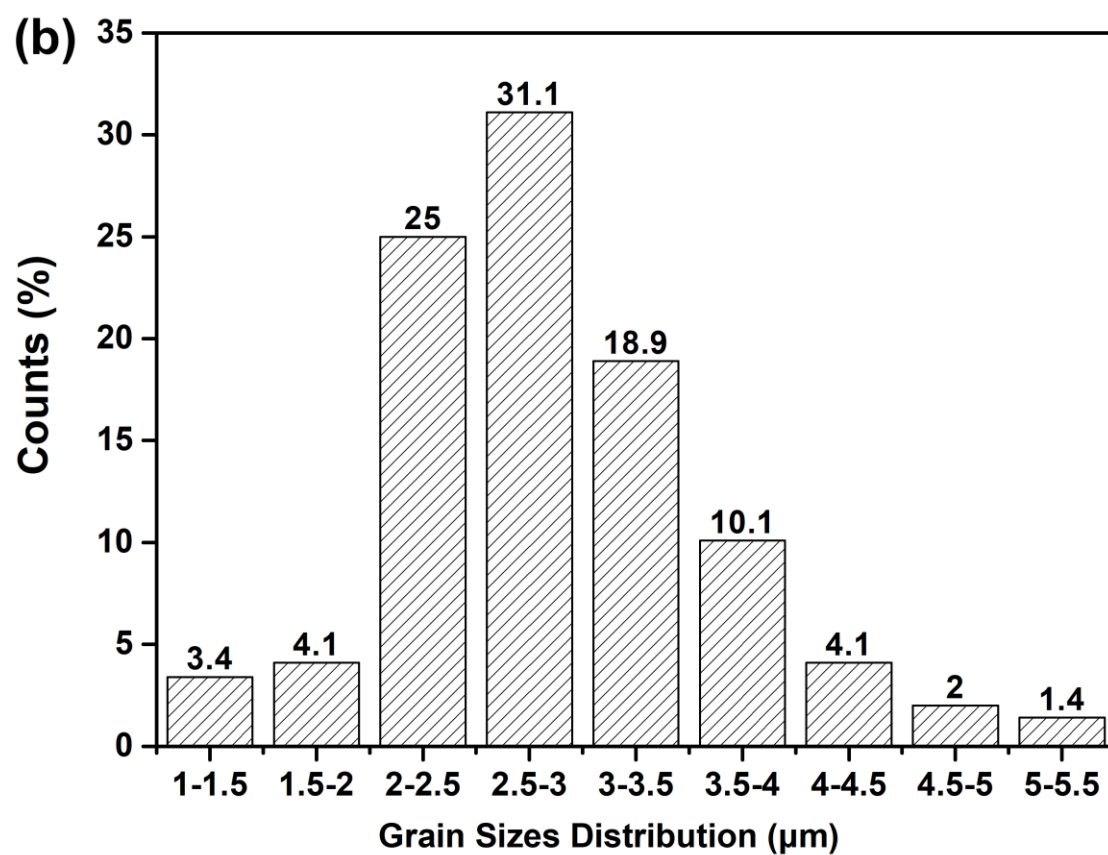
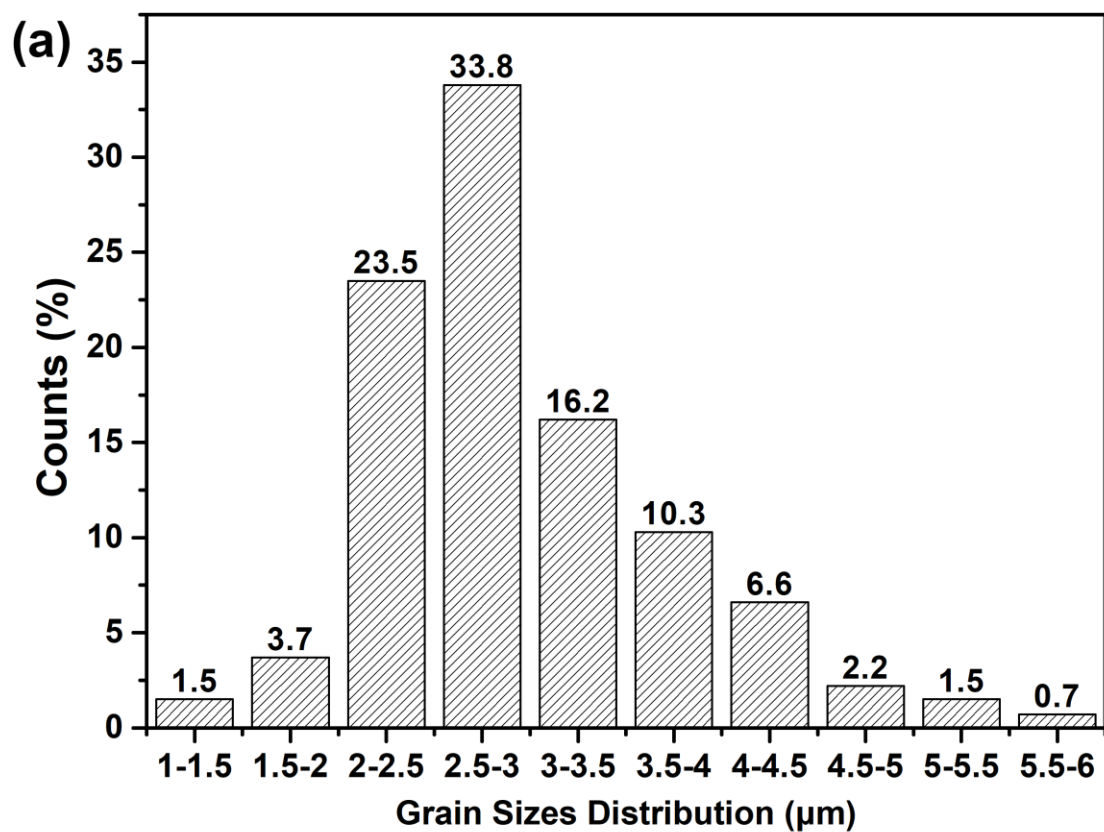


Figure S11. Grain sizes distribution of BiVO_4 and (a) Ag/BiVO_4 (b) powder obtained at 450°C

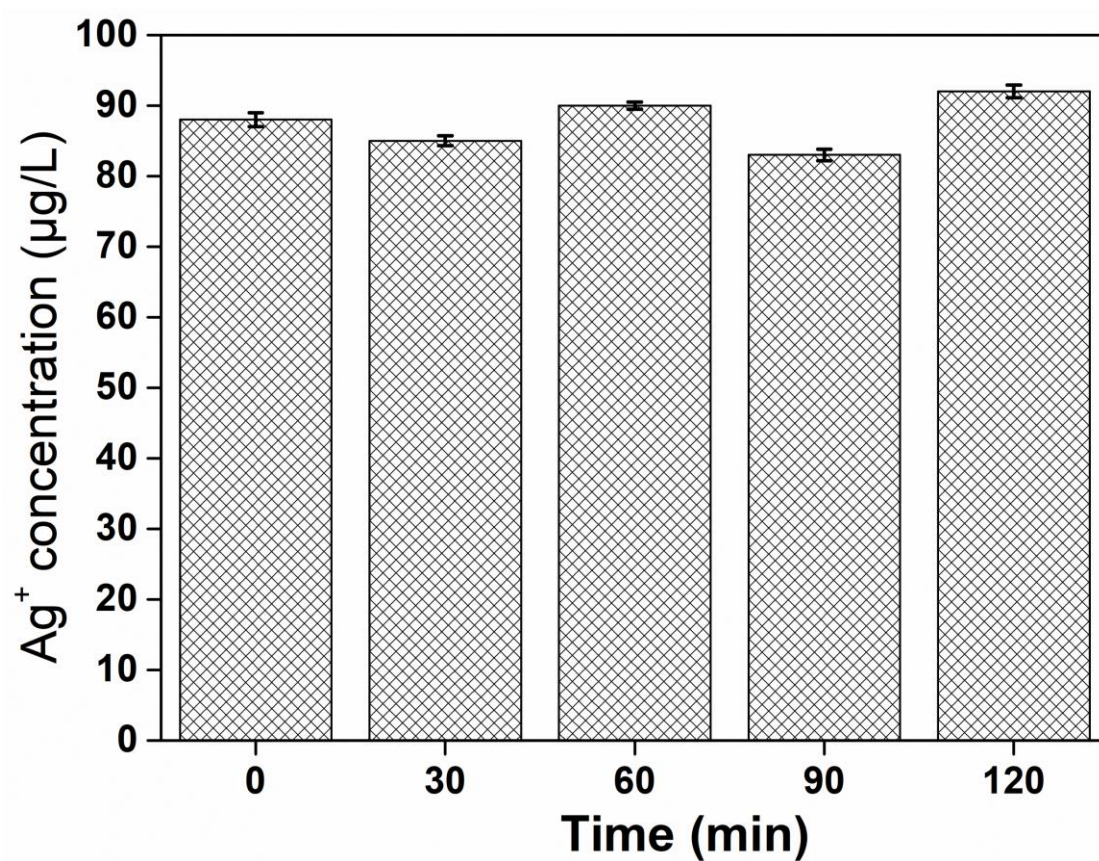


Figure S12. Concentration of released Ag^+ from of Ag/BiVO₄ functionalized ceramic tiles annealed at 650 °C.

Table S1 The basic characteristics of glazed ceramic tiles (model number: 630ELN52005-A)

Technical parameter	Unit	Value
Nominal size	mm	600×300
Thickness	mm	10±0.3
Water absorption	%	5
Breakage pressure	N	1144
Modulus of rupture	MPa	23
Moisture expansion	mm/m	0.19
The amount of dissolved lead (Detection limit: 0.005 mg/dm ²)	mg/dm ²	Not detected
The amount of dissolved cadmium (Detection limit: 0.003 mg/dm ²)	mg/dm ²	Not detected
Surface flatness	/	-0.05% ~ +0.04%

